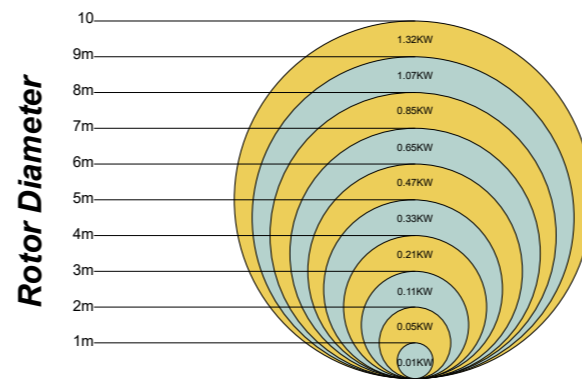
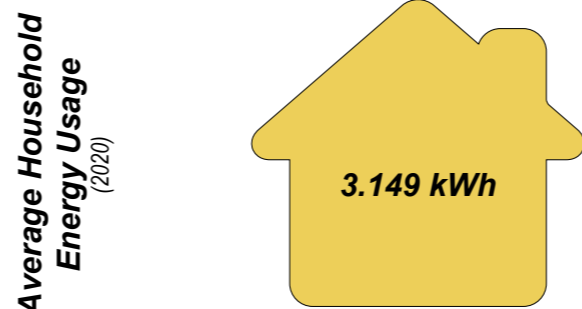


Spinelli Park Site Plan



This diagram illustrates average amounts of KWH produced by various blade lengths (measured in diameter), utilized for 'Property' & 'Garden' scale turbines (see write up), based on average local windspeeds of Mannheim of 13.77km/h



The average German household energy usage is 3.149kWh. While this proposal does not solely focus on household energy consumption, it does give a measurable benchmark for understanding energy outputs from various turbine sizes.



Diagram 1: Local Flowers Turn into Windmills

A Day in the Life. *An excerpt from the future:*

The wind is blowing creating a pleasantly warm evening breeze, and the flowers are swaying to the gentle rhythm. The long grass softly tickled their ankles, and the sky is a deep blue.

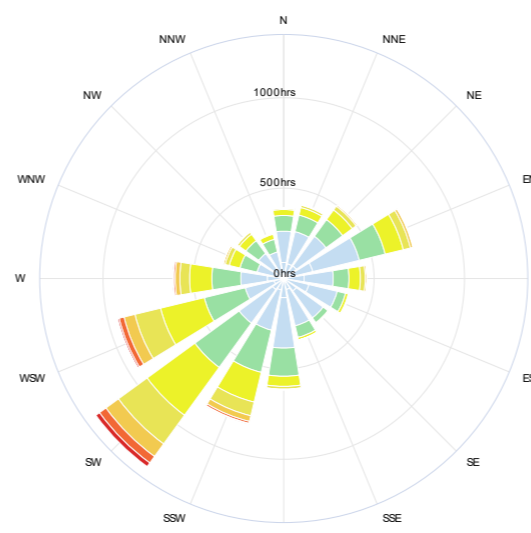
A couple is taking their routine stroll along the old railway tracks of Spinelli Park, just enjoying each other's company, and admiring all the beautiful flowers surrounding them. The woman stops to smell some of the fragrant blooms, while the man observes wind turbines in the distance, looking curiously like sculptural adaptations of the same flowers that surrounded them.

They don't mind as it starts to get dark because as the stars come out, so do the turbine-powered lights; softly illuminating their path that leads them home.

It is a beautiful evening in Mannheim.

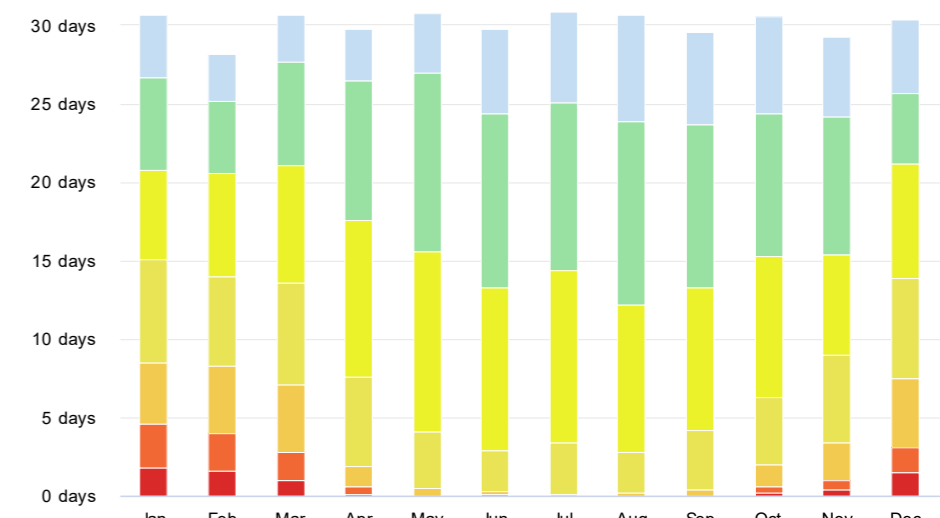


Figure 2



Directional Hours of Wind Per Year

Legend for wind speed categories: > 5 km/h (light blue), > 12 km/h (green), > 19 km/h (yellow-green), > 28 km/h (yellow), > 38 km/h (orange), > 50 km/h (red-orange), > 61 km/h (red)



Speed of Wind (Days Per Year)

Legend for wind speed categories: > 5 km/h (light blue), > 12 km/h (green), > 19 km/h (yellow-green), > 28 km/h (yellow), > 38 km/h (orange), > 50 km/h (red-orange), > 61 km/h (red)