

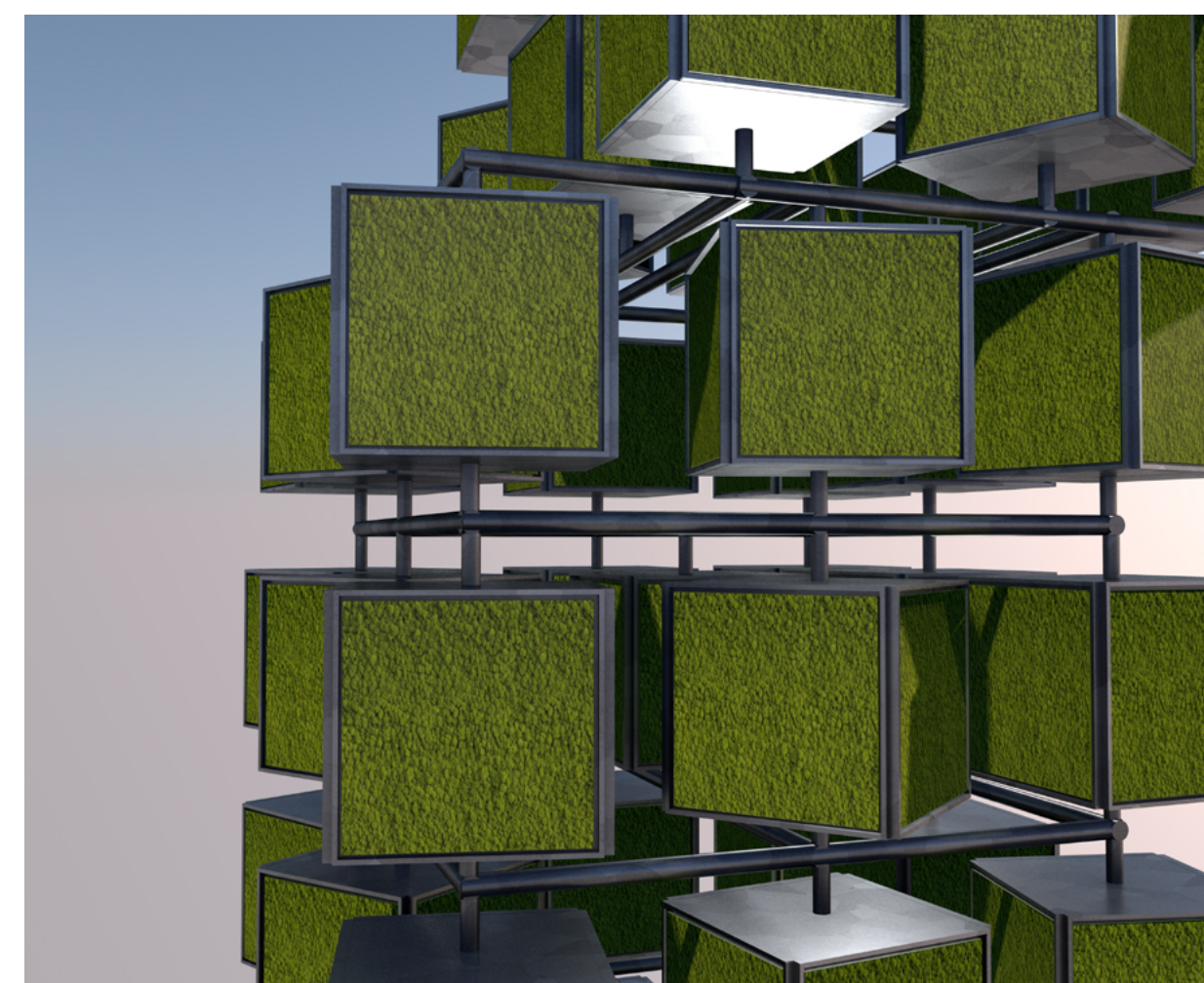
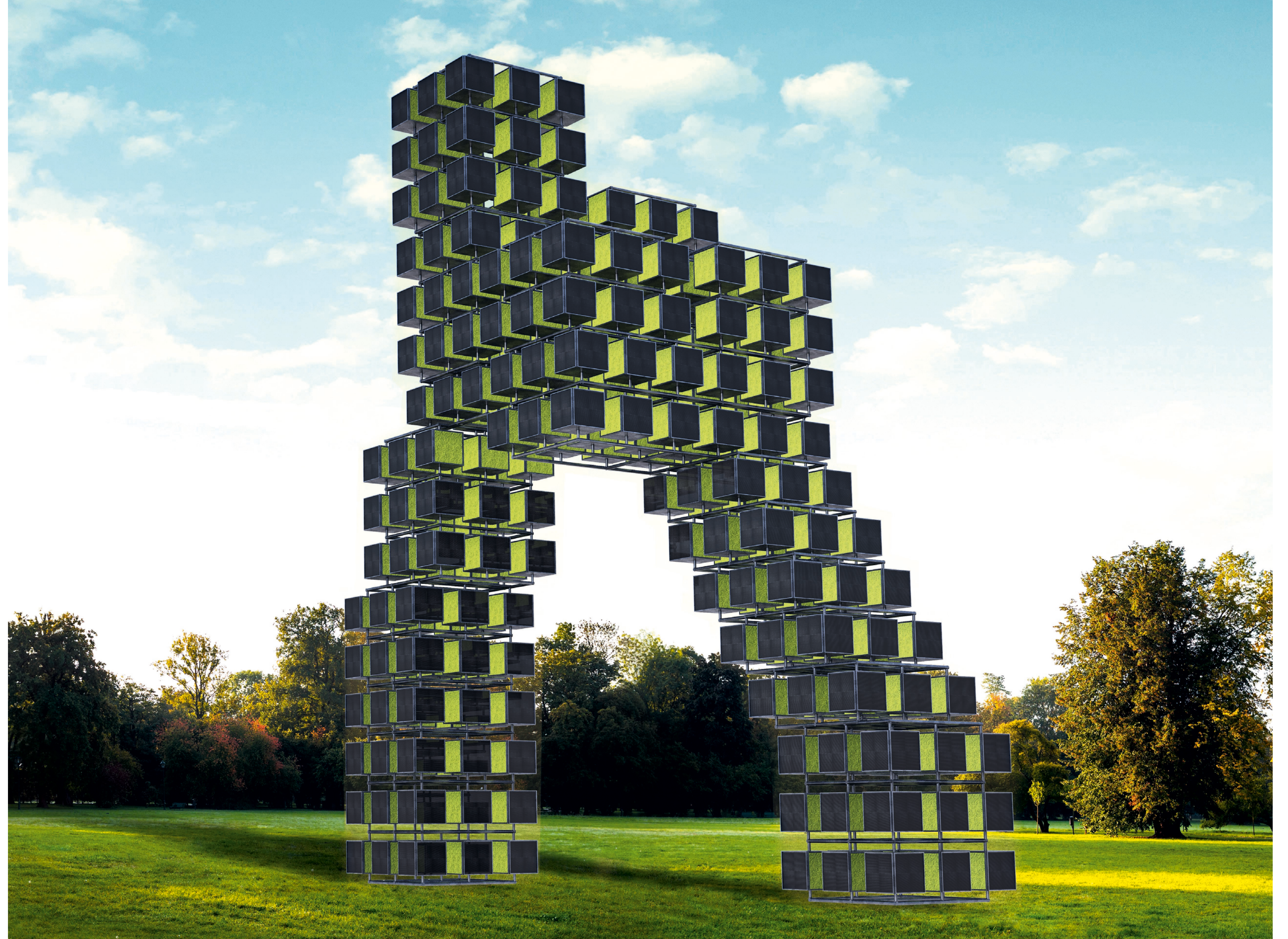
# The Step

**A 69.000 KWh/a monument  
for progress.**

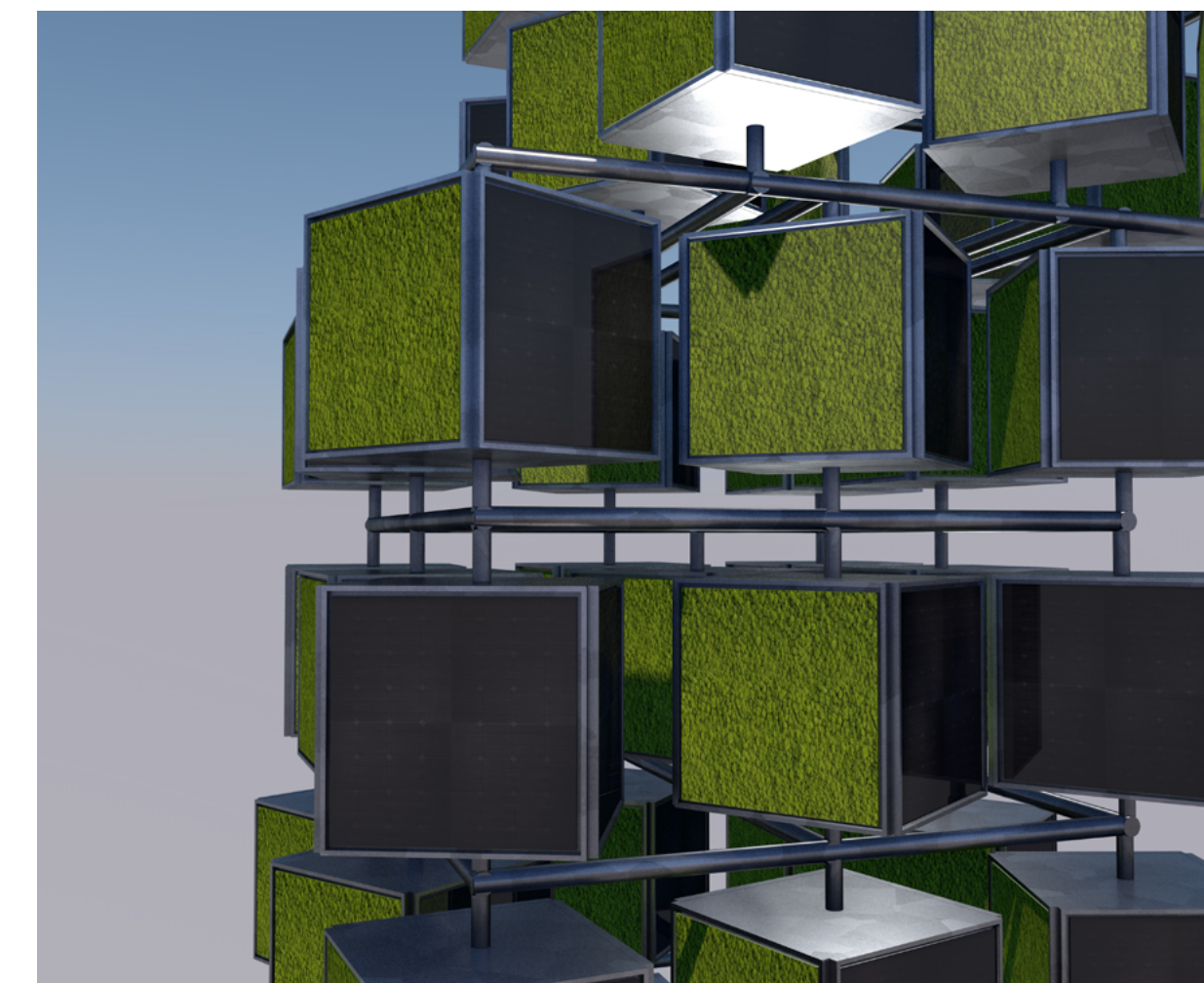
The sculpture “MIC’s Step” visualizes the important and determined move into the future of conscious change. By taking this step, we shape new paths and break up old-fashioned thought patterns. Because only those who stride, who step up and move, live. Generations after us should be able to experience this planet as a safe and lively place. This is why we set a motivational example for progress to shape our future in harmony with our planet.

“MIC’s Step” unites trend-setting design with green energy. The strategic location is not a coincidence — the sculpture is placed at the spot with the highest energetic efficiency, without disturbing the wind flow in the green corridor, which is very important for Mannheim’s climate plan. Additionally, the cubes rotate in their arranged rows and follow the sun orientation during the day. This enables us to generate as much energy as possible. „MIC’s Step“ alone can supply 28 households each year with green energy — compared to energy generated with fossil fuels, it saves 62 tons of CO2 per year.

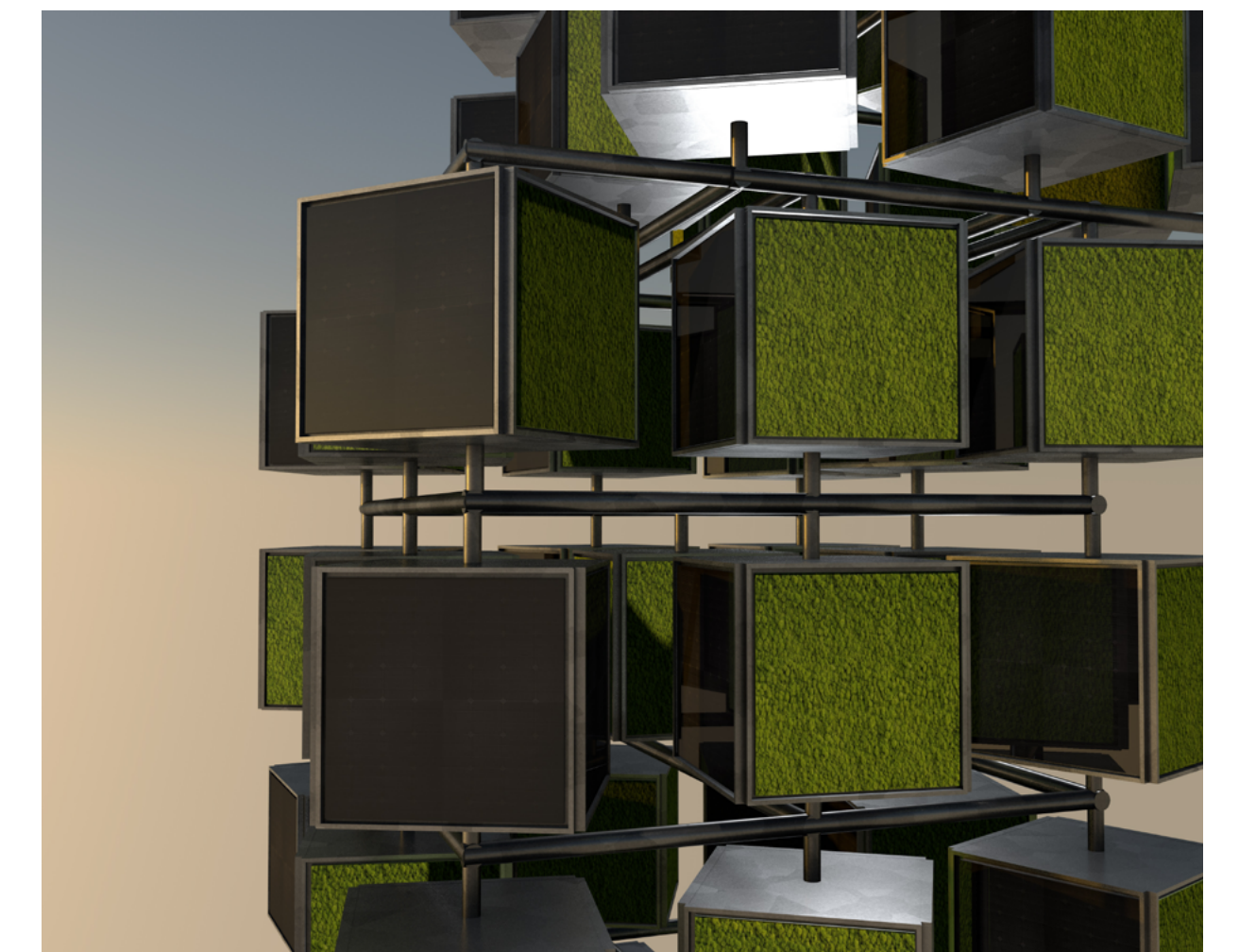
“MIC’s Step” in Spinelli Park will directly face Mannheim’s Wasserturm (water tower), a famous landmark, which was also constructed to generate green energy. It was built in the Imperial Era and visualizes the past — together they form an energy symbiosis. We were inspired by the cast of the sculpture “Unique Forms of Continuity in Space” by artist Umberto Boccioni, which is displayed in the Mannheimer Kunsthalle (Mannheim’s art gallery). Our monument is a new interpretation of progress — it is about environmental protection and new ways to create a better balance on our planet. As a holistic concept, MIC turns its areas of application into places of social experience. It meets the urban modern lifestyle to inspire people to a more environmentally conscious thinking.



8 am in the morning



1 pm in the afternoon



8 pm in the evening