

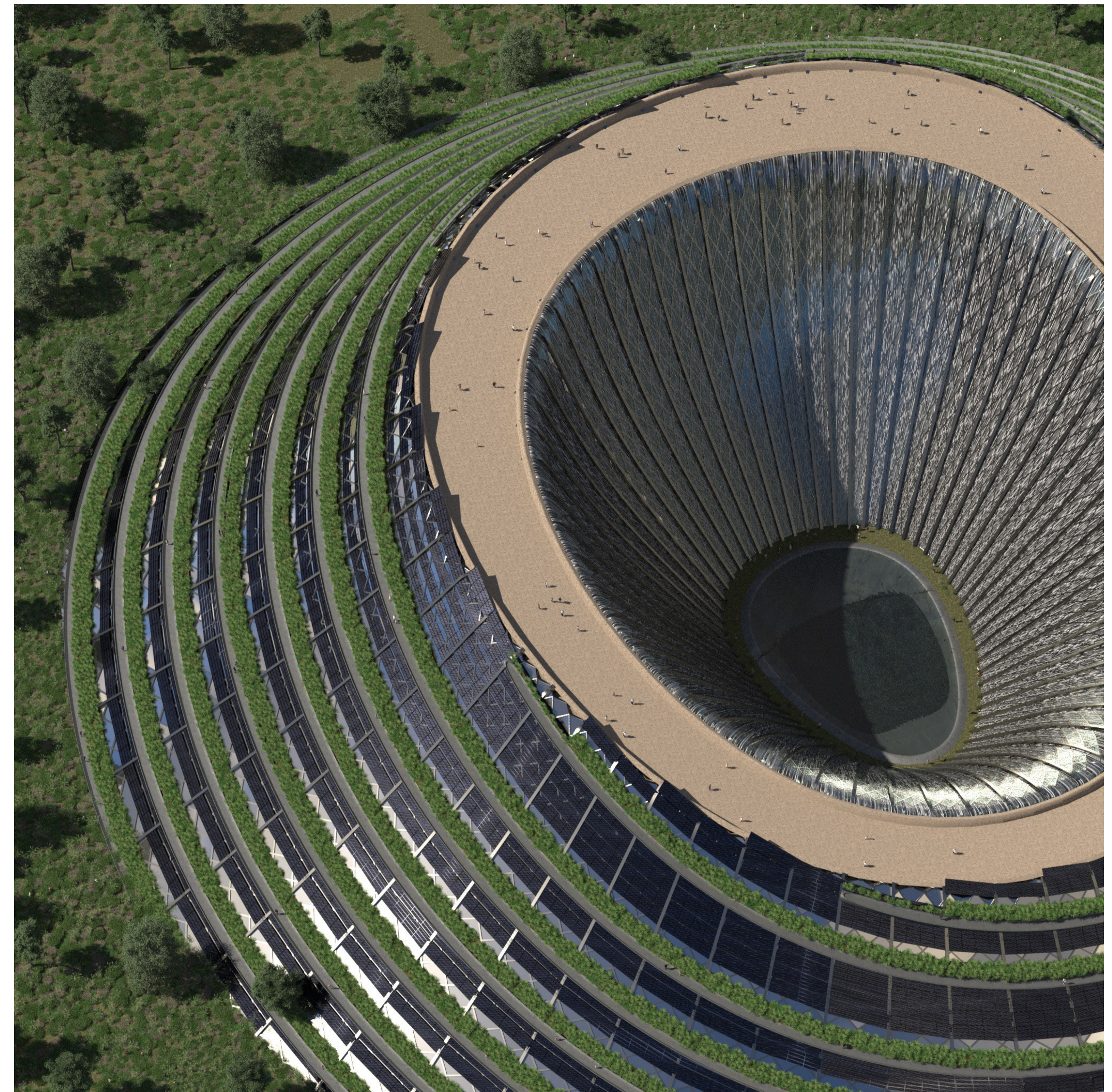
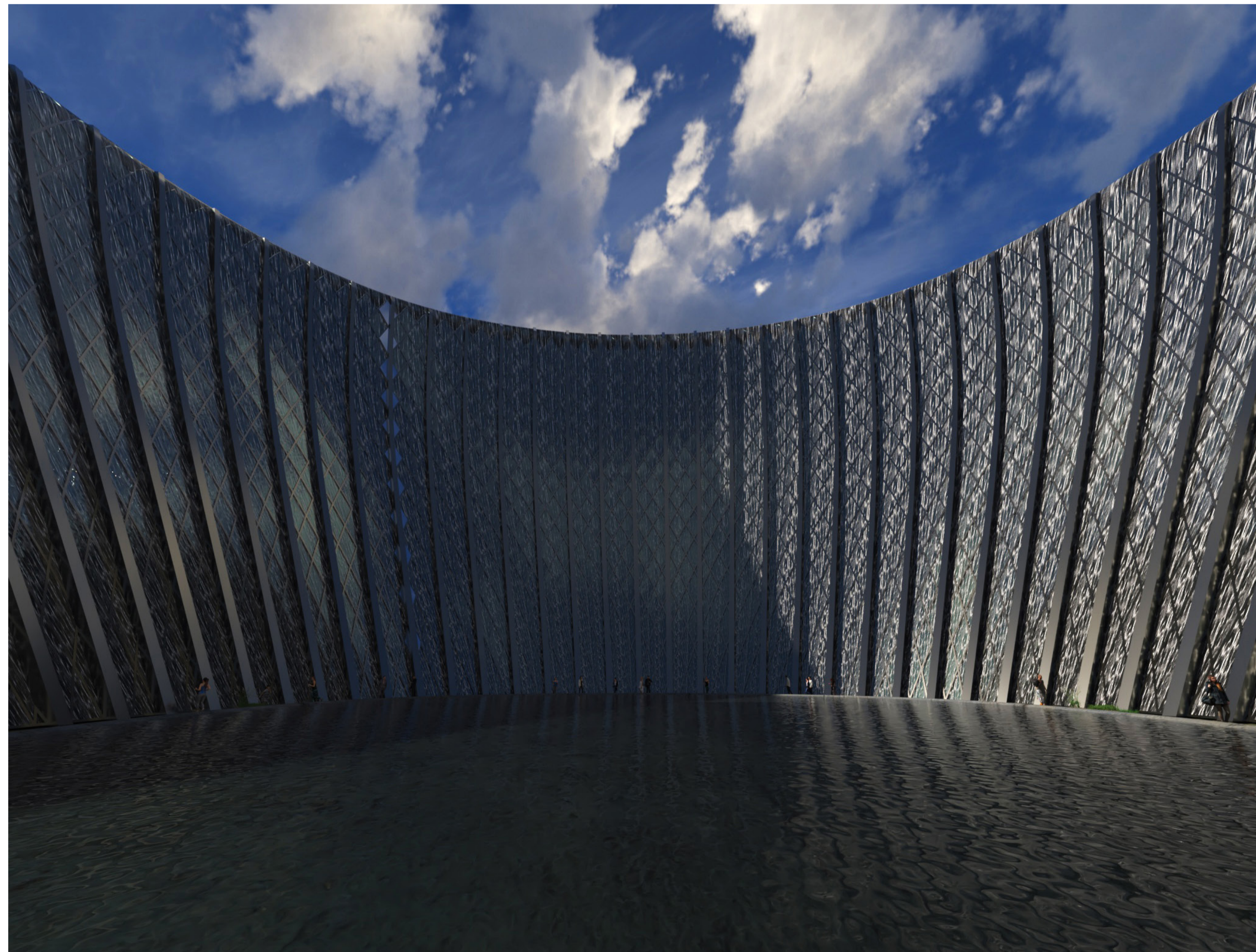
THE BIG PICTURE

The mound has been designed as an emblematic landmark that serves as a public space for pleasure, as well as education and familiarity with water technologies.

The space also provides the grounds for public engagement through public gardens. The gardens are laid out across the mound, and in sections dedicated to solar panels.

The space underneath the mound stores a water treatment unit, a small power plant, a pump house, groundwater submersible pumps as well as a rain water collection basins.

It should be mentioned that Mound unit covers 1 hectare. With a total site area of 53 hectare we could scale up to 53 units



A SELF SUSTAINING SYSTEM

The mound holds within itself all of the technological features that allow it to be a self-sufficient unit. All of the electrical energy needed to operate this structure is captured through photovoltaic panels situated on the mound, and stored in the storage units within the body of the mound. The water is also retained all year round from precipitation as well as from groundwater and purified within the structure's purification unit. This pure water in turn flows through the designed space, giving life to the lush garden spiralling around the outer surface of the mound, while cycling back around through the central pond and back to the top.