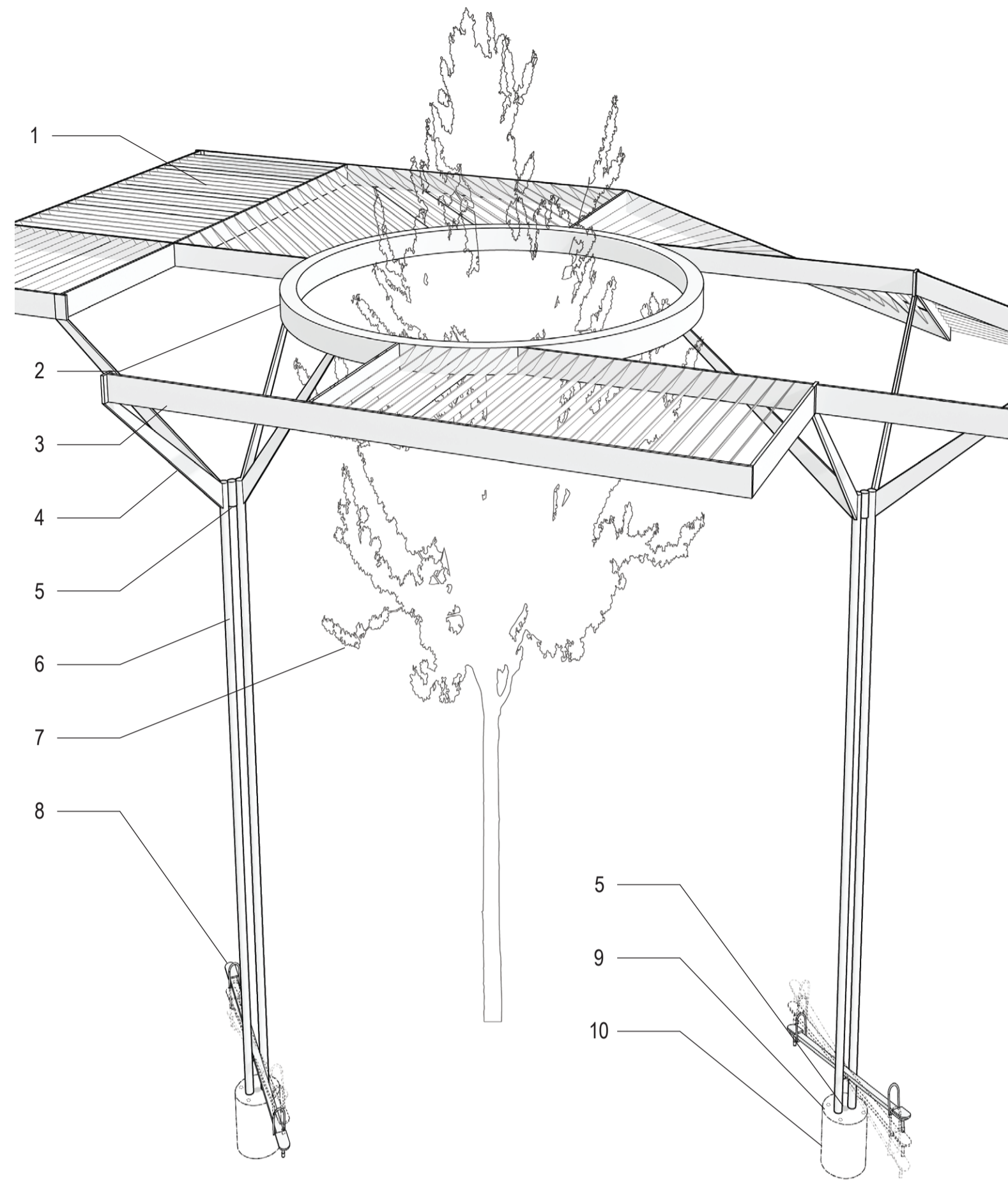
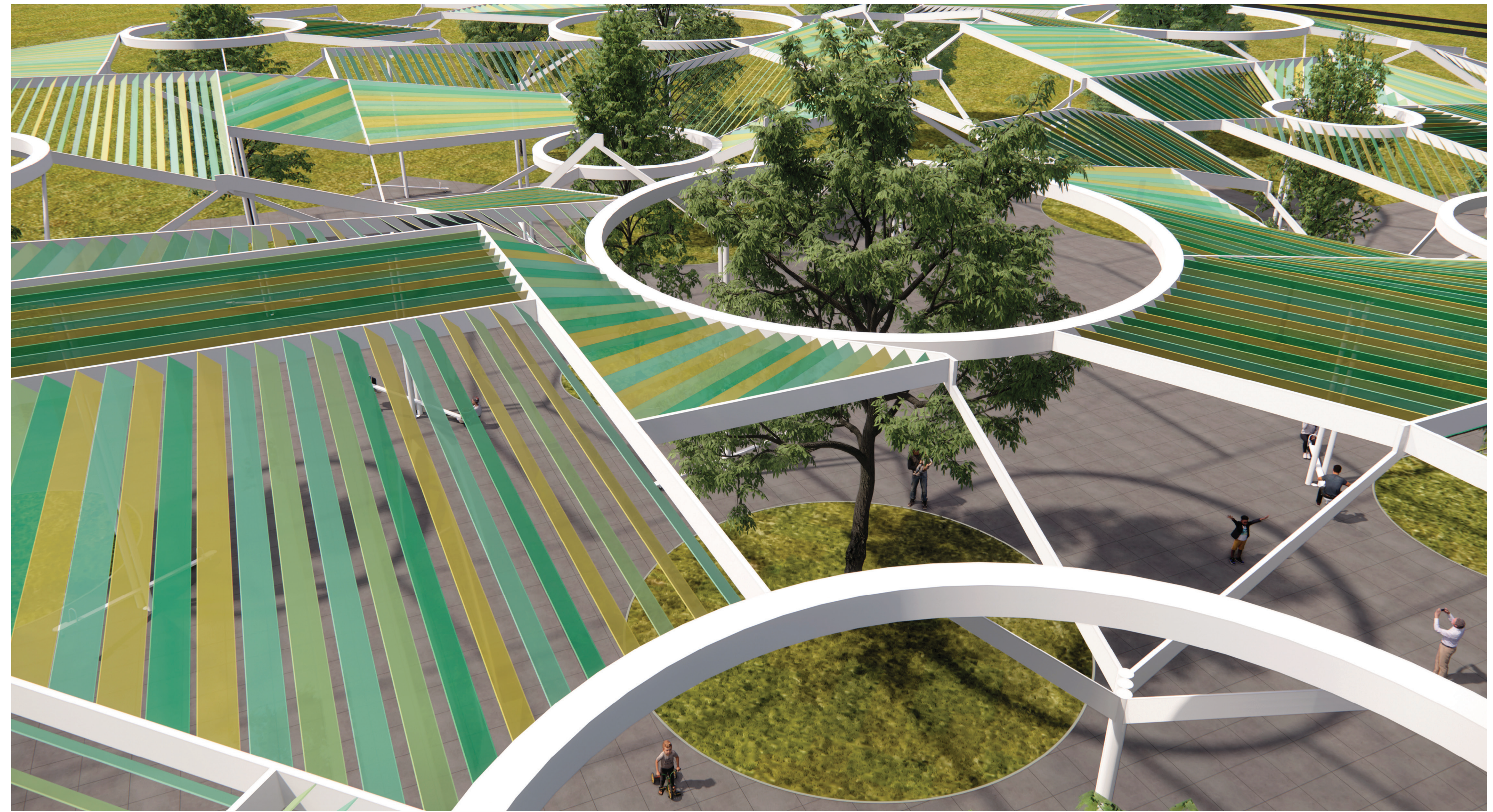


Construction Detail



- 1. COLORED PHOTOVOLTAIC GLASS (SHADES OF GREEN)
- 2. ALUMINUM FRAME, 50 X 300mm
- 3. CIRCULAR ALUMINUM FRAME, 300 X 300mm
- 4. DIAGONAL BEAM SUPPORT
- 5. LED LIGHT FIXTURE

- 6. STEEL PIPE, 150mm Ø, 5mm THICKNESS
- 7. TRANSPLANTED TREE
- 8. KINETIC ENERGY HARVESTING SEESAW
- 9. BASE PLATE
- 10. PRECAST CONCRETE PILE FOUNDATION



View from above



View from south