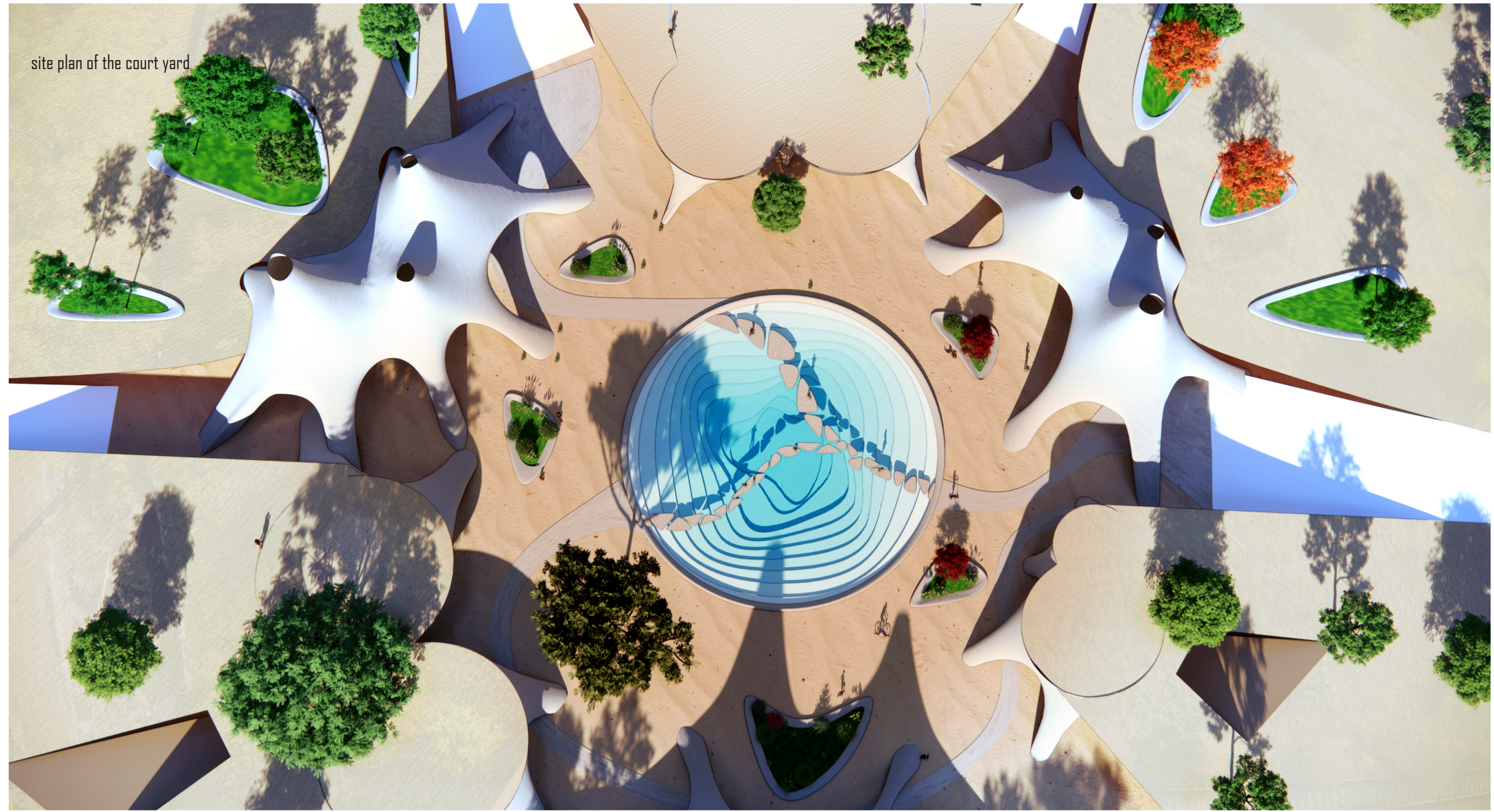
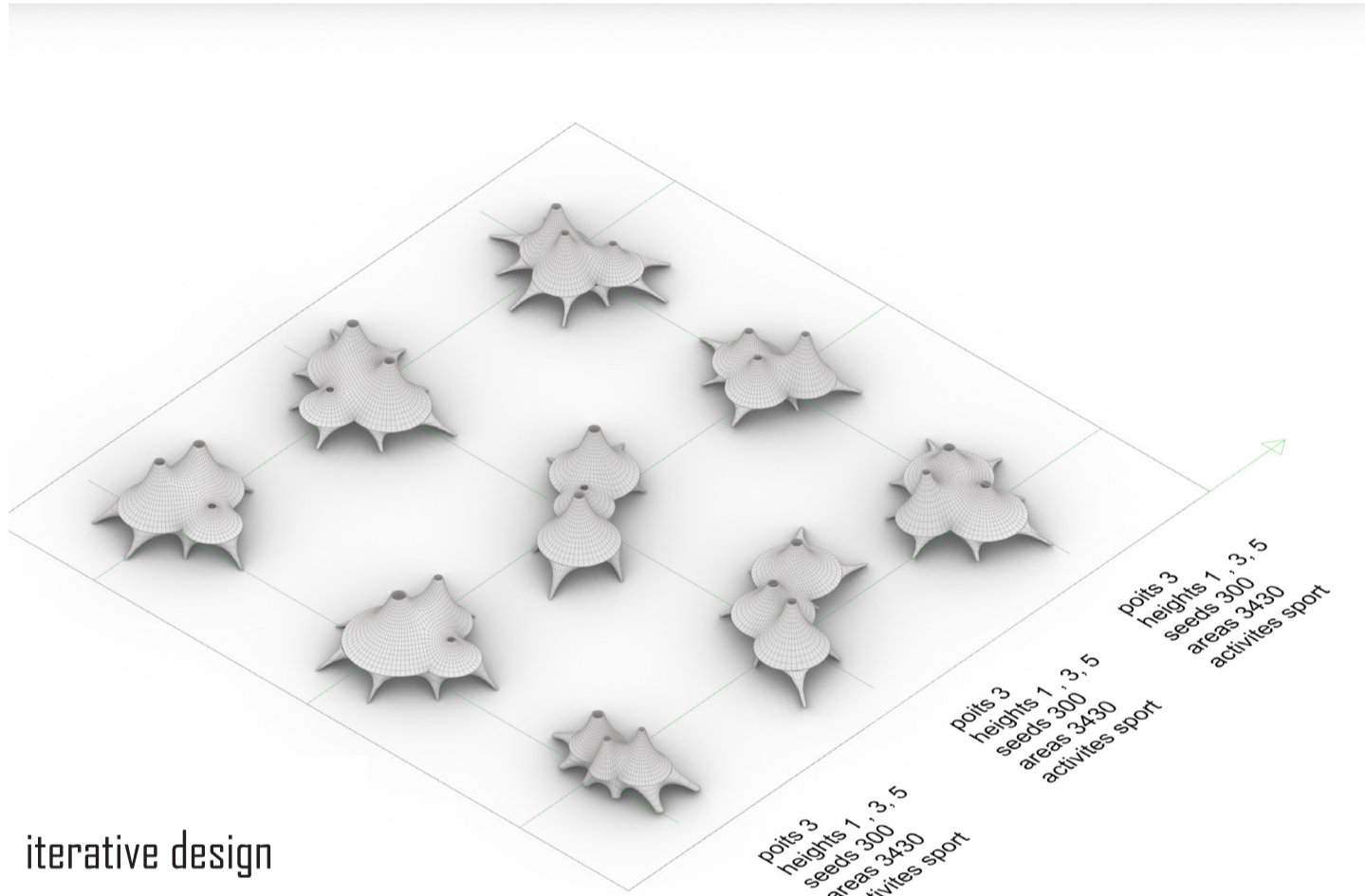




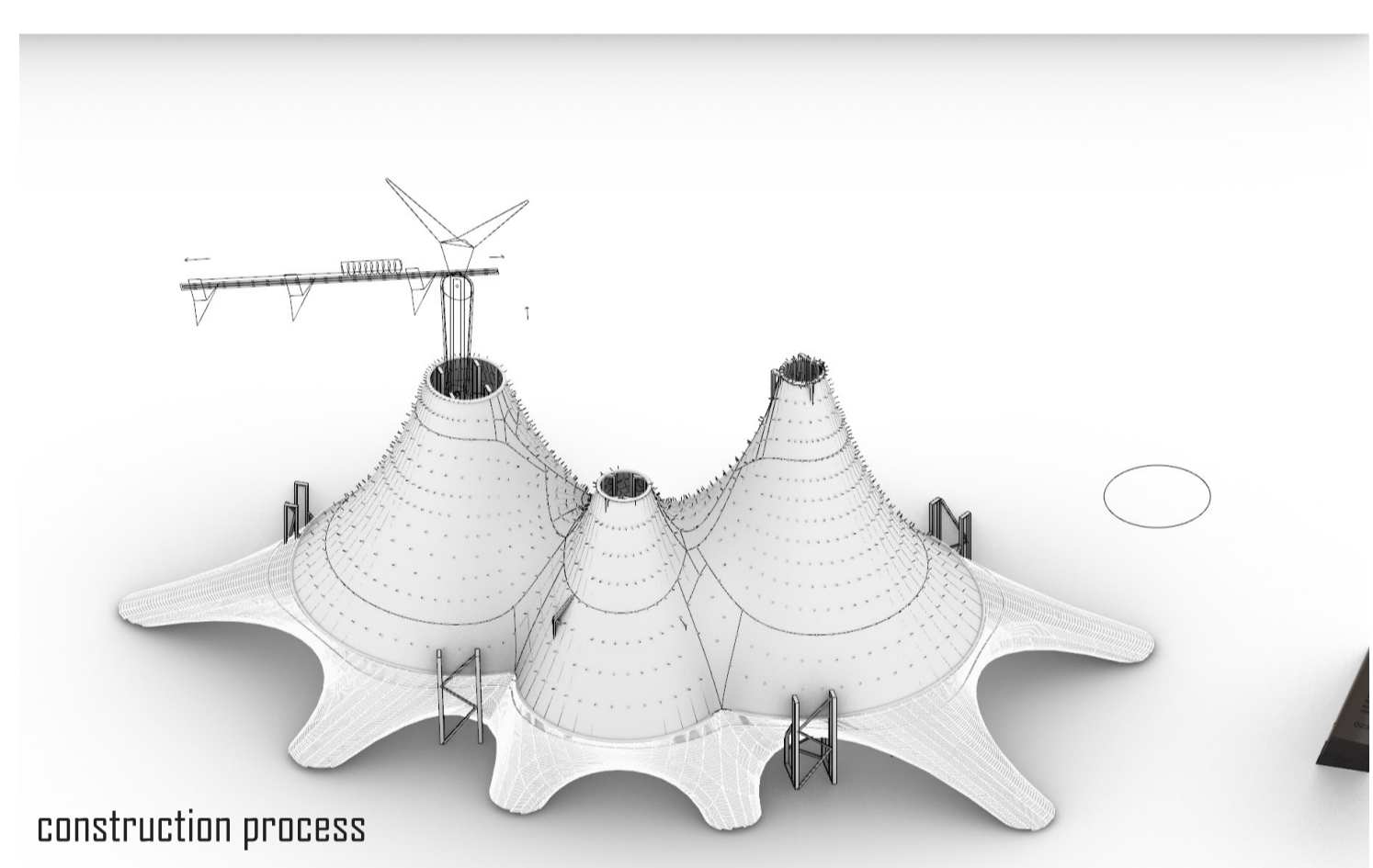
wide perspective for the lake and the court of the grid shells



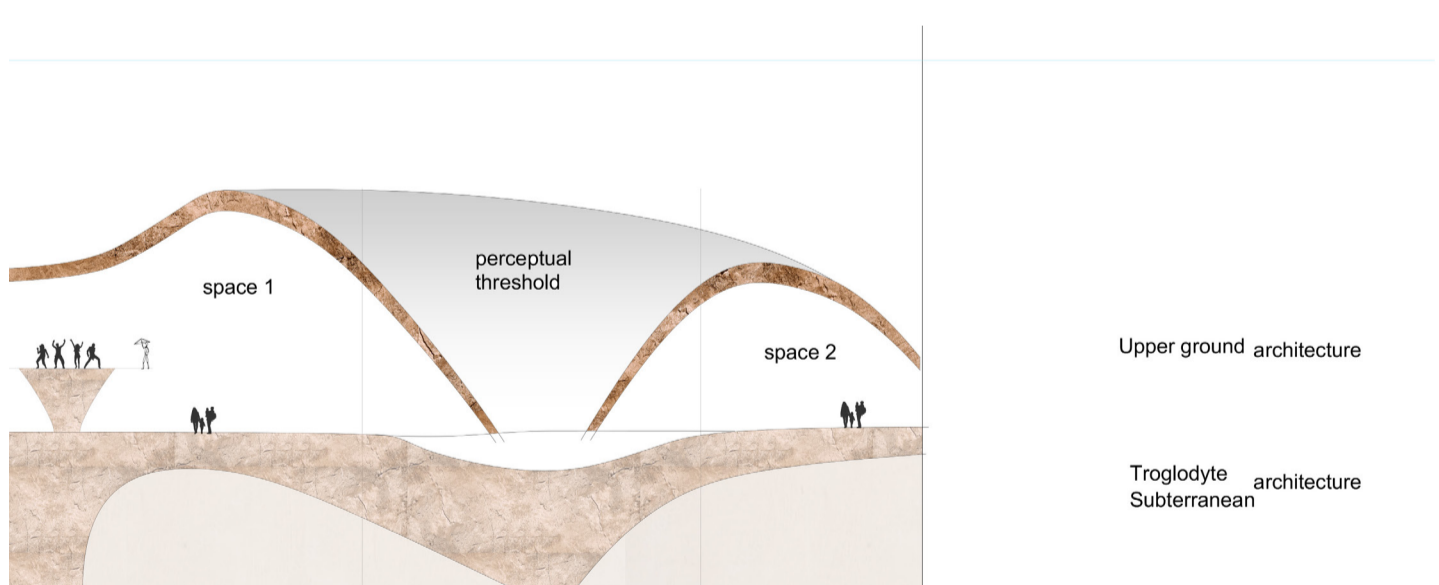
site plan of the court yard



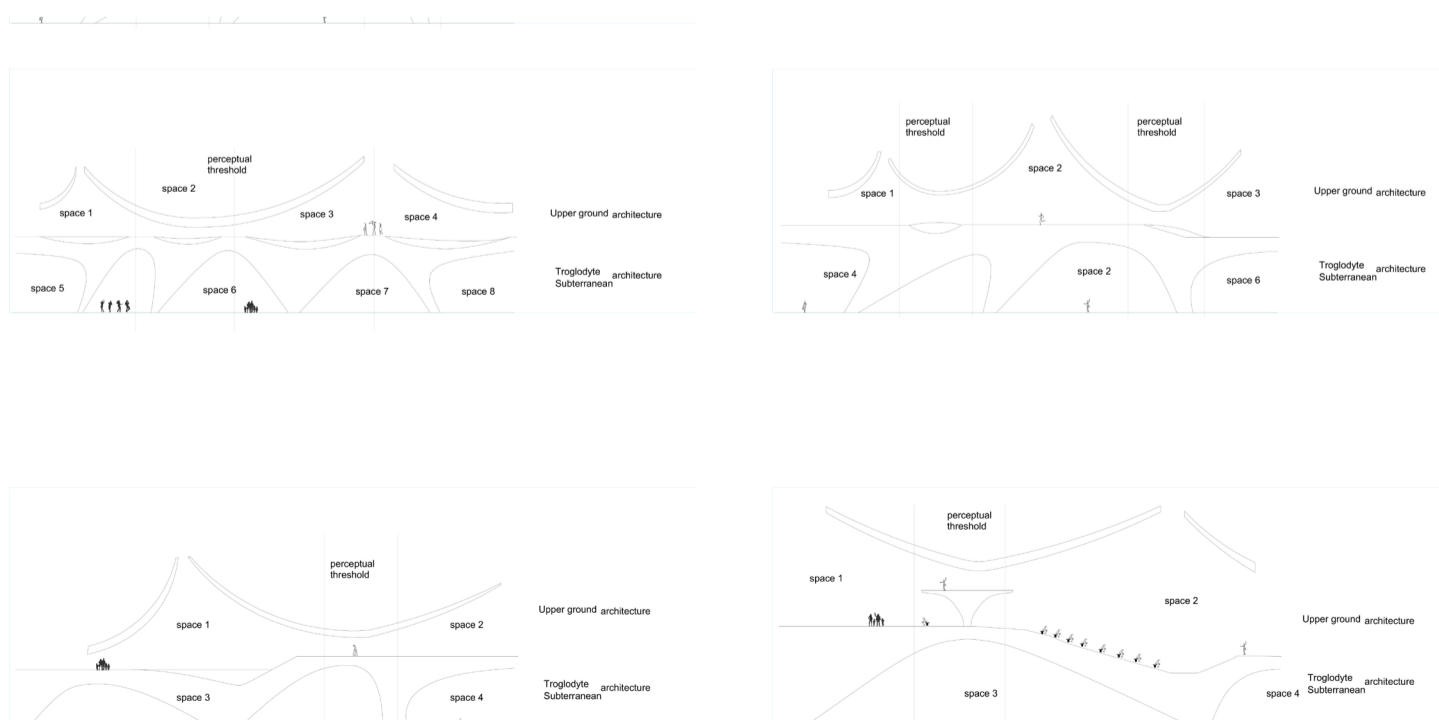
iterative design



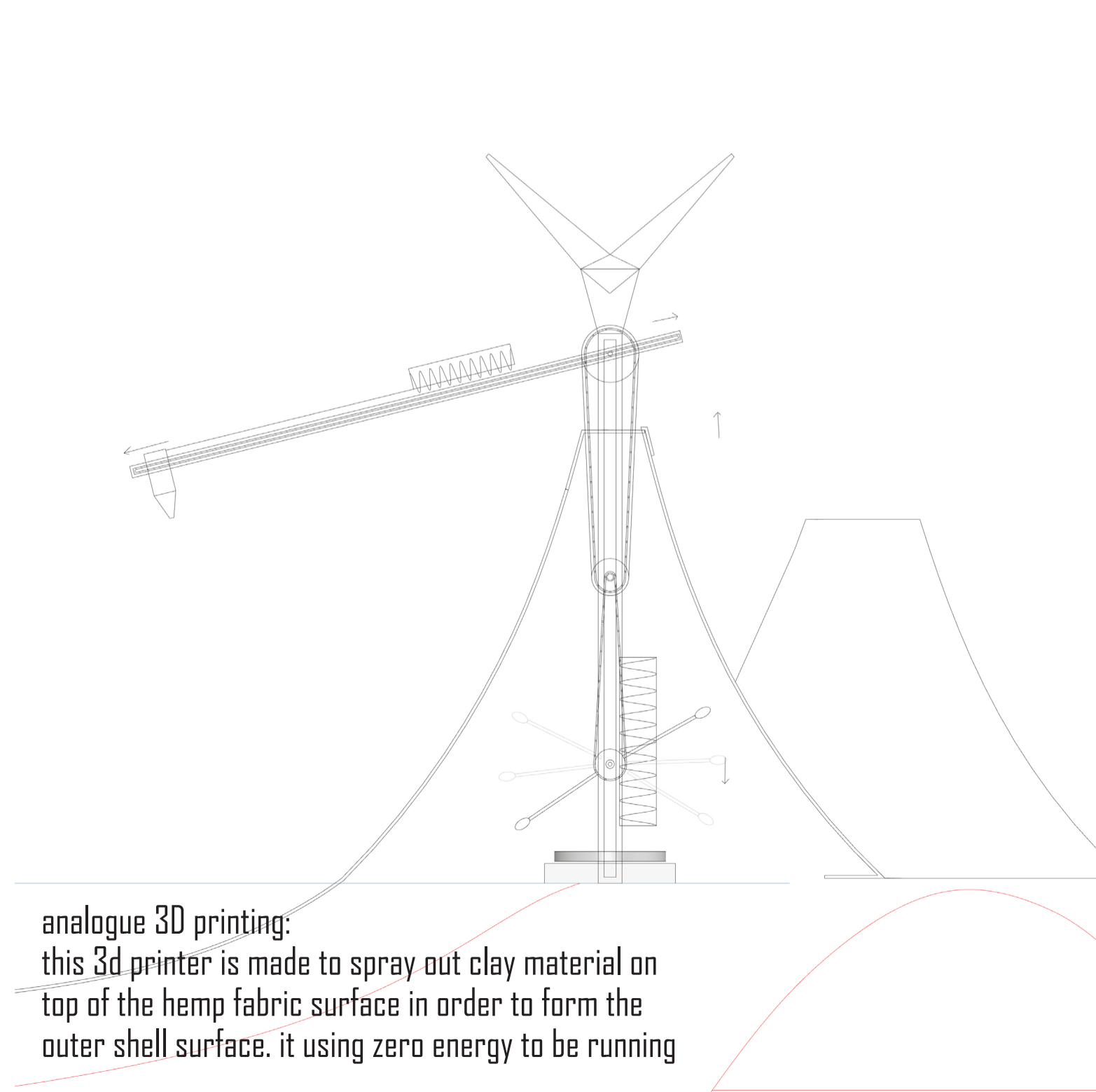
construction process



Upper ground architecture
Troglydyle architecture
Subterranean

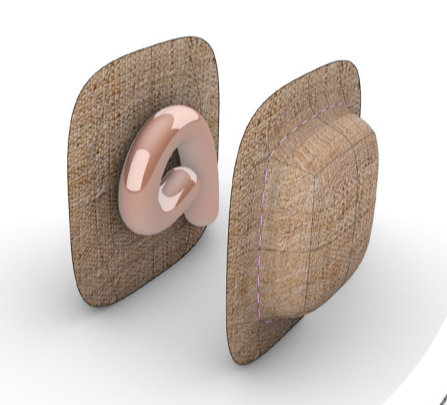


space explorations in different levels

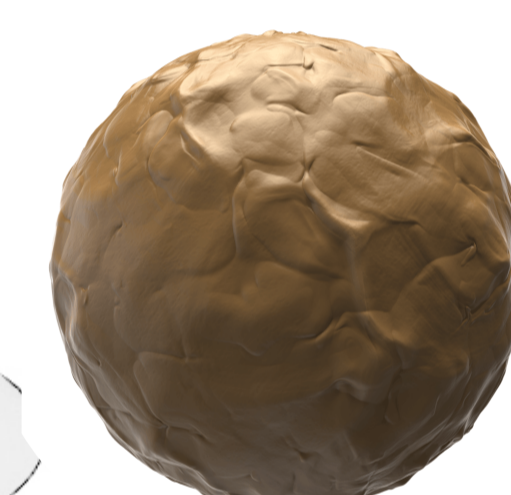


analogue 3D printing:
this 3D printer is made to spray out clay material on top of the hemp fabric surface in order to form the outer shell surface. it using zero energy to be running

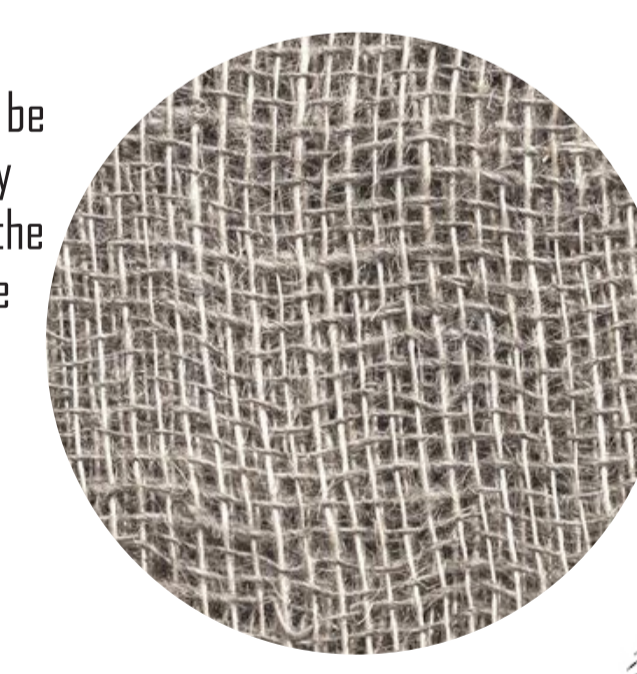
close up detail for one of the fabric panel and how it will be inflated in order to form a hollow core space to be stiffed by concrete layer and then filled with clay



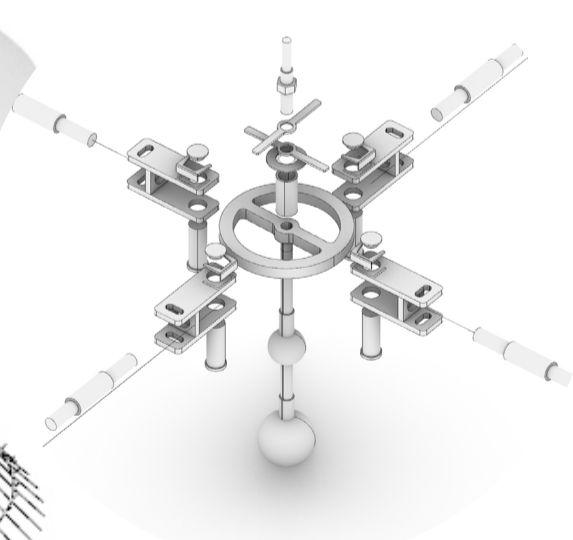
Clay Material as a final finishing for the grid shell



a tow layers of hemp fabrica will be knitted costumizly in order to follow the free form surface curvature



steel connectors to connect the steel cables and to hang the knitted fabric in space



earth bags will form the innir walls, air gates and the bottom shell for the semi public spaces



a network of steel cables will be hanges on alternative supports and then iw will be connected by a special kind of connection in order to hange the knitted fabric

