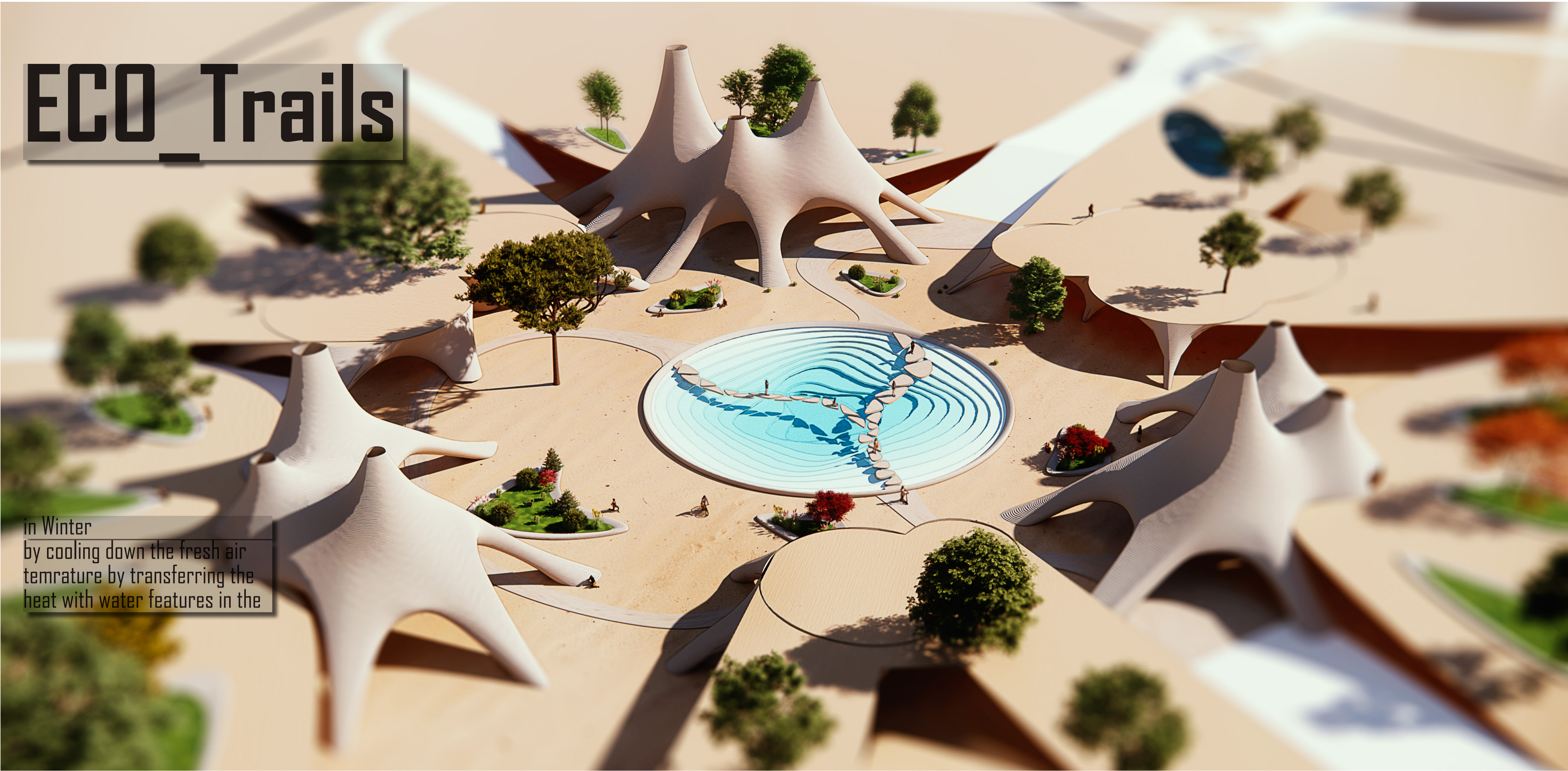
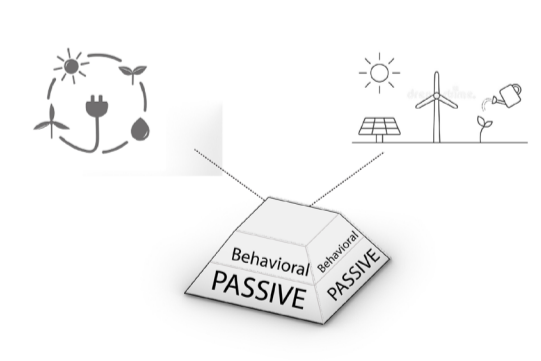


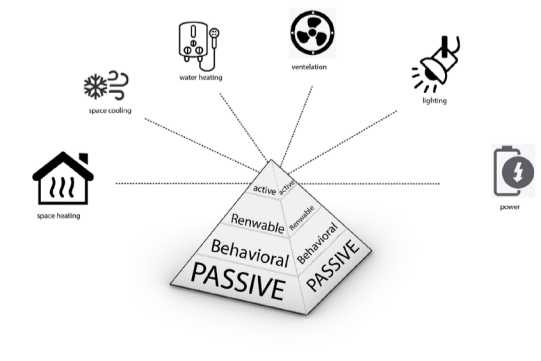
# ECO\_Trails



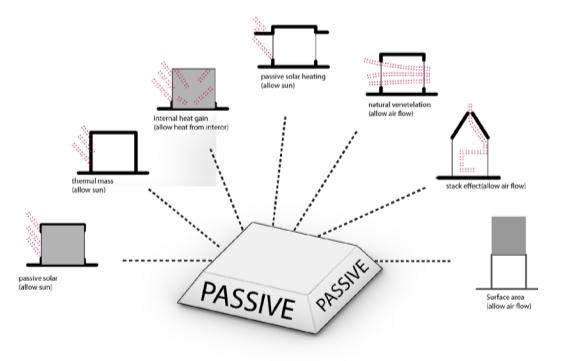
in Winter  
by cooling down the fresh air tem-  
perature by transferring the heat with water features in the



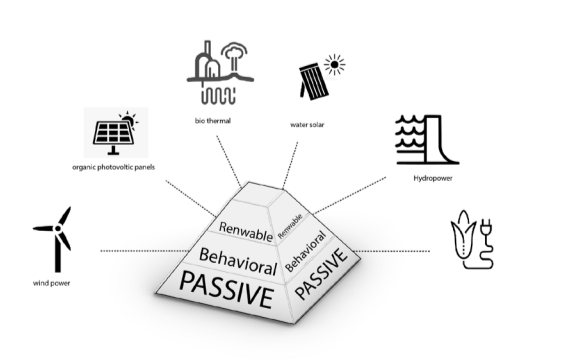
in Winter  
by cooling down the fresh air tem-



in Winter  
by cooling down the fresh air tem-



in Winter  
by cooling down the fresh air tem-



in Winter  
by cooling down the fresh air tem-

urban landscape	Landart	wind paths	public sapces
		water circulation	heat
		solar power	cooling
Architectural scale	Troglodyte Architecture	local materials:earth bags - clay	light
		analog 3D printing	build awames
	Subterranean Architecture	wind channels as walking paths	
		water fountain as recreational spaces	
		solar energy from bio teach	

