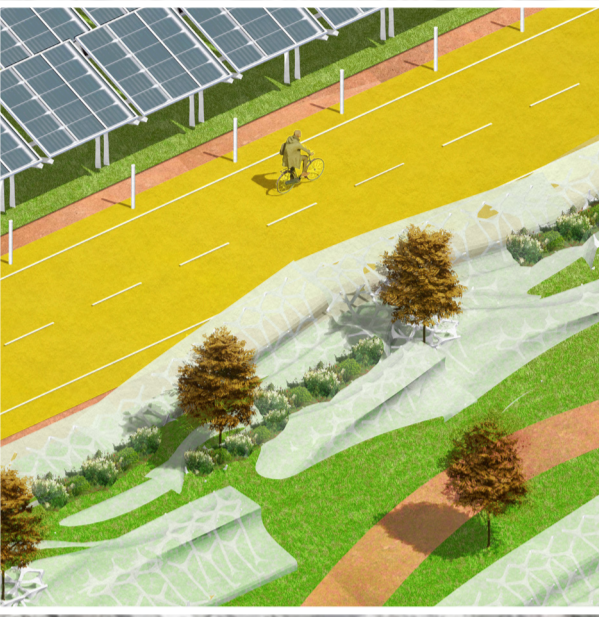




Tetravoltia proposes three distinctive public parks that are themed as Community Park, Garden Park, and Solar Park. The bike paths and walkways that stitch together the three parks provide pedestrians, joggers, and bicyclists with a plethora of experiences. We also deploy modular tetrahedron lattice structures throughout the park to activate the spaces and provide amenities to visitors.

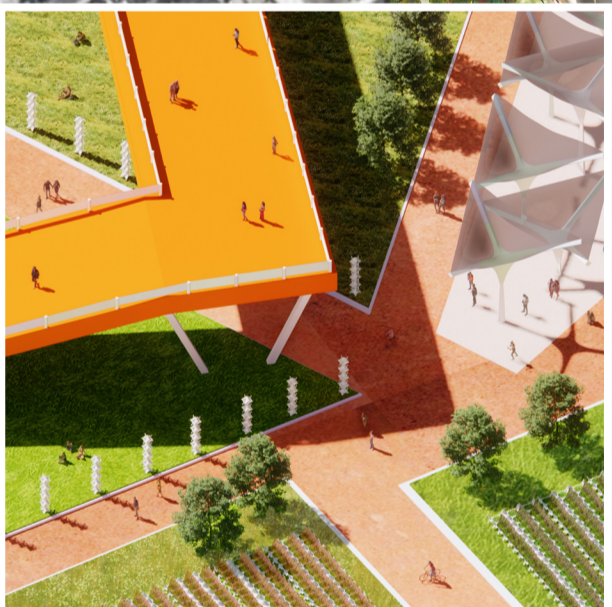


The **Solar Park** consists of large open areas and lawns for the neighborhoods. We allocate a large park area to deploy a field of sail structures that harvest solar energy, collect rainwater, and provide shade to visitors.

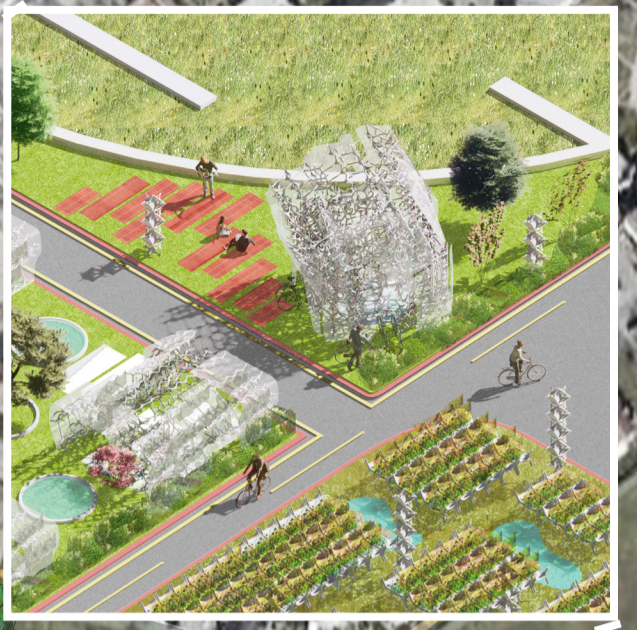
UN SUSTAINABLE DEVELOPMENT GOALS (SDG)

The proposed Community Park support the neighborhood residents and foster an active and family-centered lifestyle (SDG 3. Good Health and Well-being & SDG 11 Sustainable Cities and Communities). The Garden Park integrates various modes of food production, promoting sustainable agriculture and healthy living (SDG 2. Zero Hunger). The Solar Park merges the public park with large-scale energy production (photovoltaic membranes and rainwater management (SDG 6. Clean Water and Sanitation & SDG 7. Affordable and Clean Energy)). Furthermore, Tetravoltia modules are constructed using sustainable fabrication processes and materials (SDG 9. Industry Innovation and Infrastructure & SDG 12. Responsible Consumption and Production).

The circulatory axis converge between the garden and solar parks. It lies on the tangential point of the old railway leading to the U-Hall, which is now a repurposed walkway/skatepark. An elevated walkway provides a vantage point to survey the entire landscape. This forms a public square that serves as the social node on the Western edge of the site.



Pavilion Type A_Green House (20 x 20)



The Community Park

provides amenities, including playgrounds, sports and recreation spaces, rest stations, and art installations to the surrounding communities. The facilities support both individual visitors and families of all ages.

Pavilion Type C_Dispensary (5 x 5)



The Garden Park

utilizes a productive landscape design that integrates food production with the public park. Vegetables, herbs, and flowers are grown using various methods, such as raised beds, greenhouses, and aeroponic towers.

Pavilion Type B_Observatory (10 x 10)

