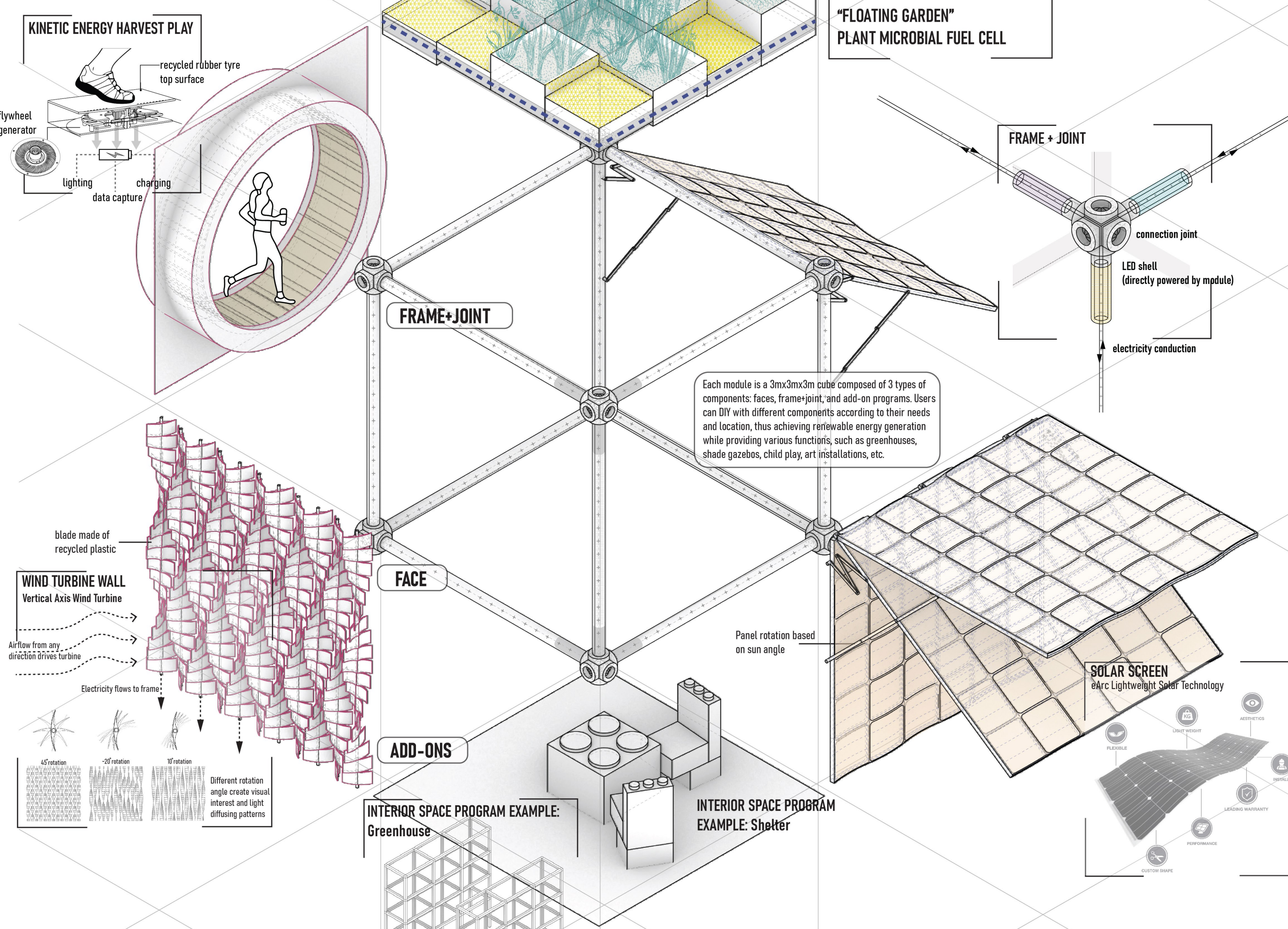
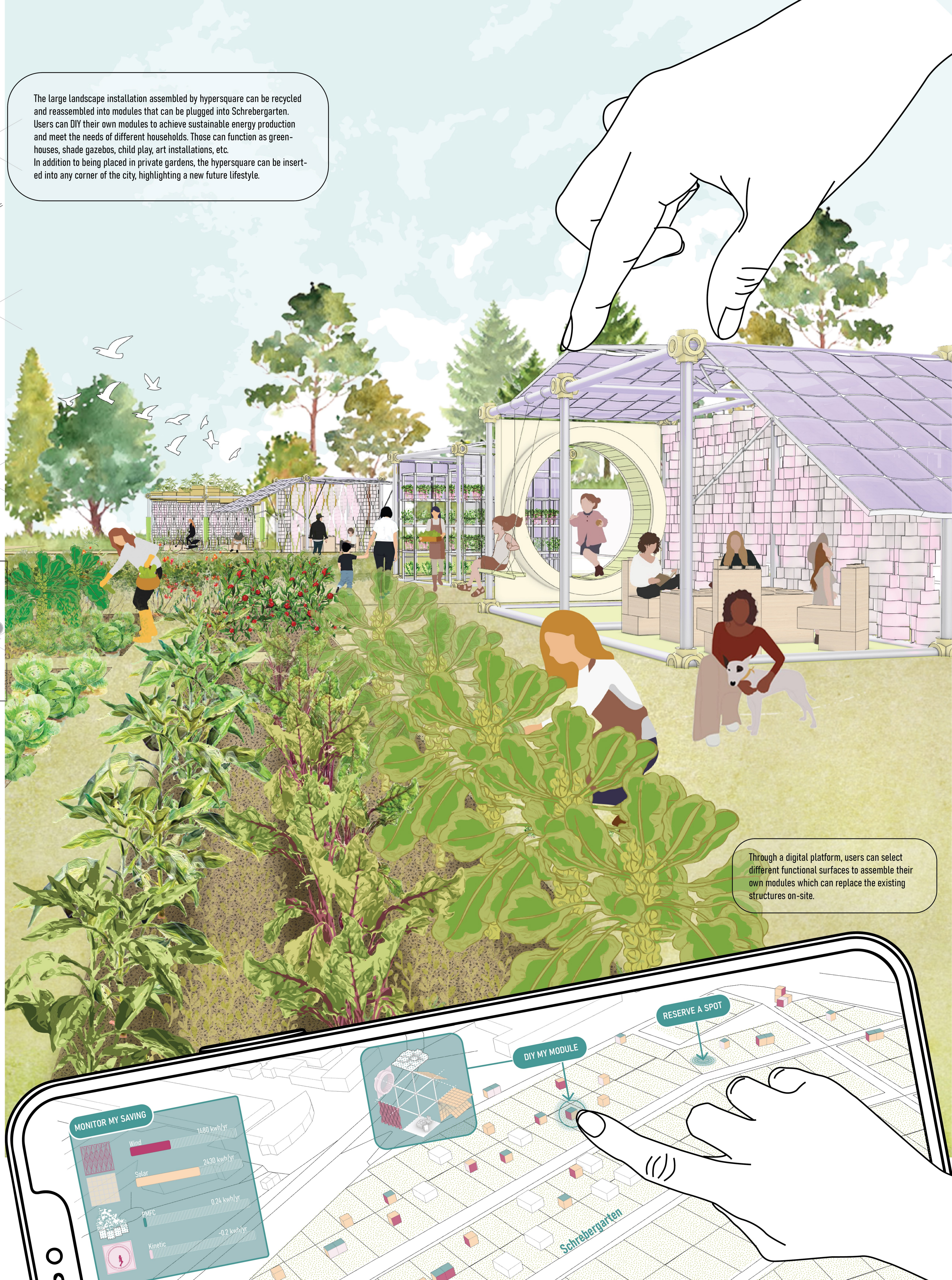


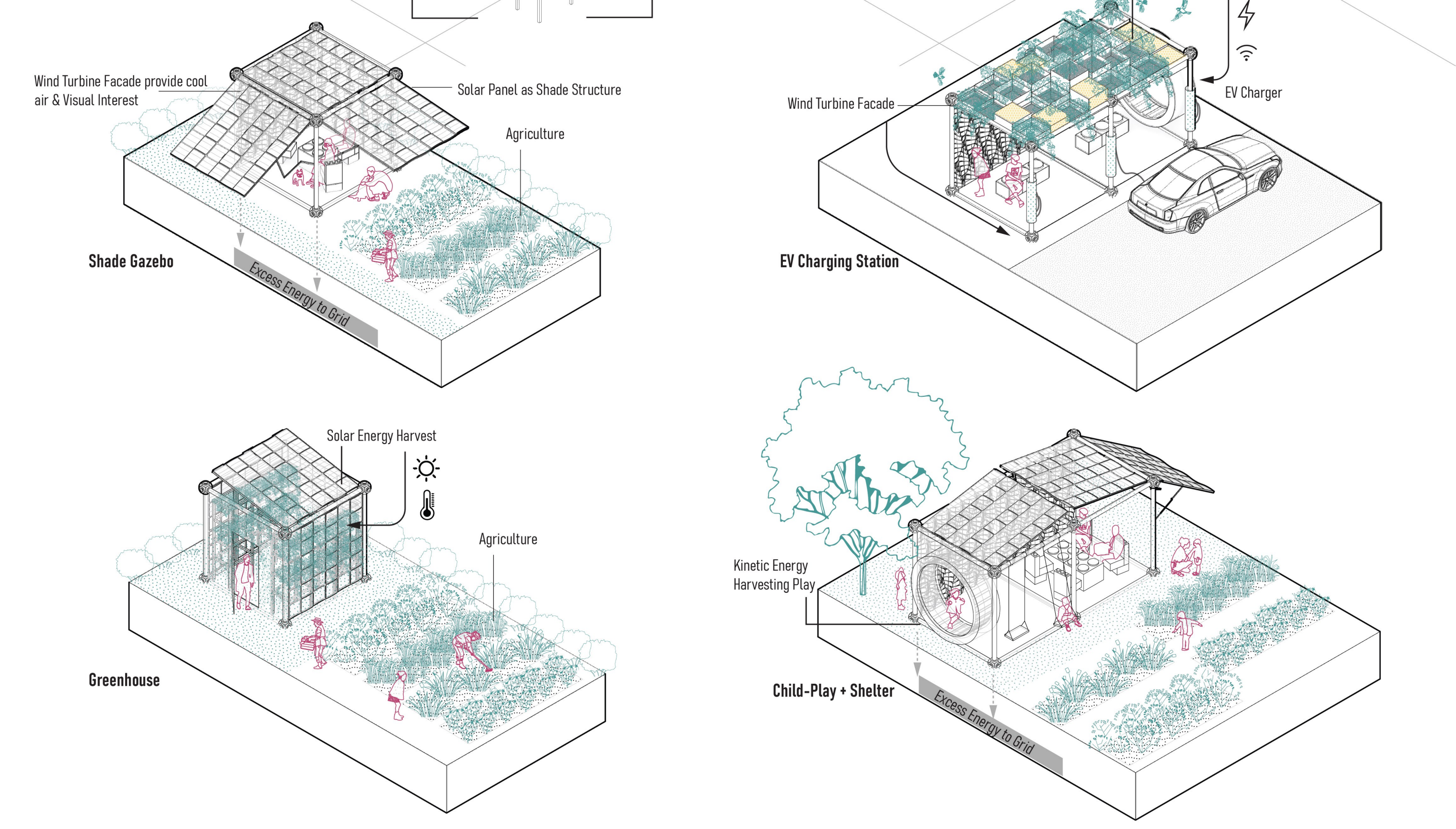
MODULE BREAKDOWN



The large landscape installation assembled by hypersquare can be recycled and reassembled into modules that can be plugged into Schrebergarten. Users can DIY their own modules to achieve sustainable energy production and meet the needs of different households. Those can function as greenhouses, shade gazebos, child play, art installations, etc. In addition to being placed in private gardens, the hypersquare can be inserted into any corner of the city, highlighting a new future lifestyle.



ASSEMBLY TYPOLOGIES



Through a digital platform, users can select different functional surfaces to assemble their own modules which can replace the existing structures on-site.

