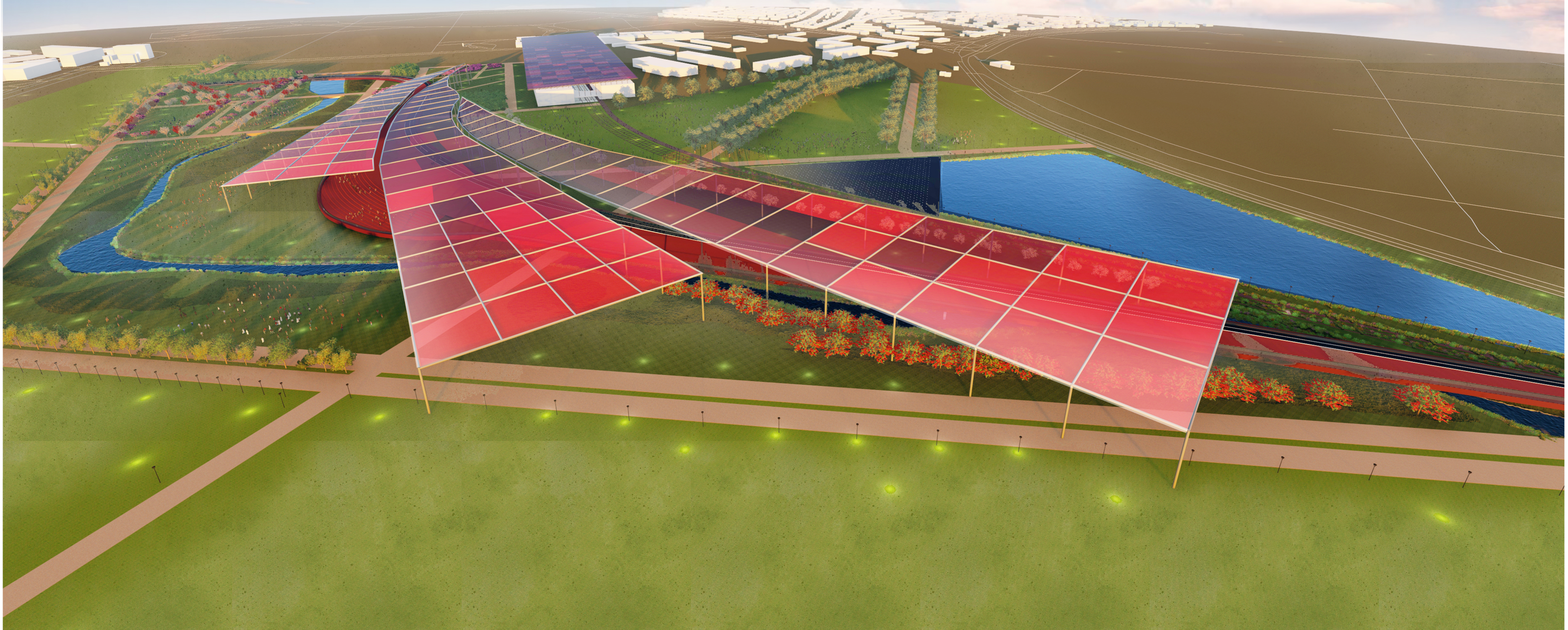


# THE SPECTRUM

dreamstime.

dreamstime.



## CONCEPT:

Our initial perspective is to create a space where people can learn, have fun and walk with fitness in mind. Learn about sustainability together, the engagement of people and raising awareness of global warming and the importance of renewable energy is an ever-lasting problem.

This is where The Spectrum site solution comes in handy, the main concept revolves around the engagement of people along with harvesting solar power, and yes it was easy to reach out for solar photovoltaics, yet it was difficult finding a solution that would increase solar harvesting, in the end, harvesting infrared was a simple possibility, using a Nano-photon Radiative Panel, and from that note, we are able to harvest solar power in addition to the heat emitted by earth at night. As well as rain water harvesting and kinetic energy from a combination of German people to bike creating a path to harvest kinetic heat energy.

### SOLAR PHOTOVOLTAIC

CoTe-BASED THIN FILM  
SOLAR CELLS  
CALCULATED BASED ON  
THE AVERAGE SUN PATH ON  
LOCATION AND SIZE.

128,055  
MWH

### INFRARED HARVESTING

CALCULATED BASED ON  
THE AVERAGE EMITTED  
ENERGY FROM EARTH

275  
MWH

### KINETIC ENERGY

CALCULATED BASED ON  
THE AVERAGE BIKING TRIPS  
IN PARKS IN GERMAN  
CULTURE.

252  
MWH

### RAIN WATER HARVESTING

10,603  
CU<sup>2</sup>