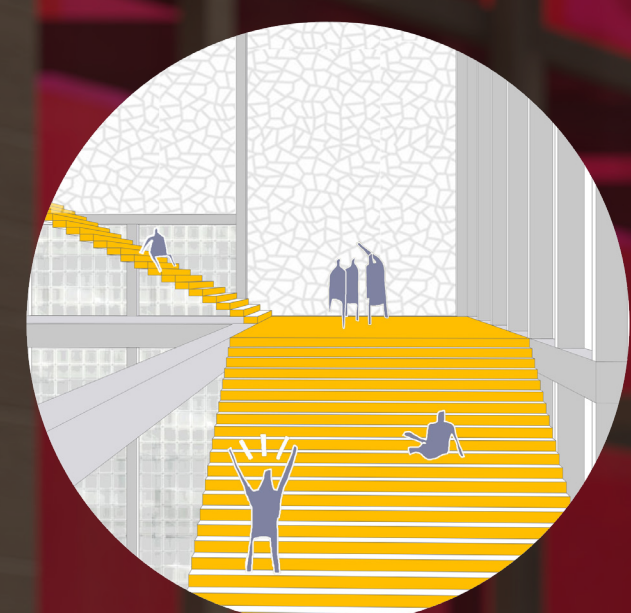


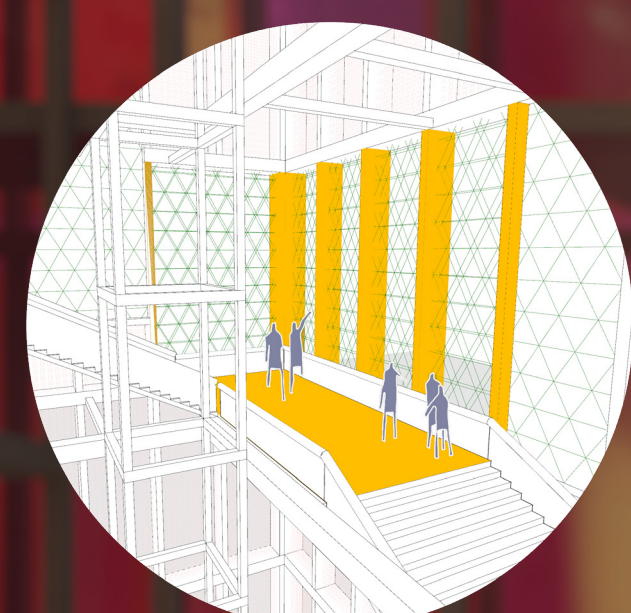
Inside the Pillar

The path through the monument is an arduous task. Immediately entering the structure, one is met with stairs that spiral to the top. Along the way people are given select viewpoints of the City of Mannheim, as well as the BUGA garden festival. The grand panoramic vista is offered to those who finish the hike - and a slow elevator ride down to the ground floor offers a moment to cool down. Finally, once at grade, a cold, serene pond offers a place to think and ponder - of what a green future may mean.

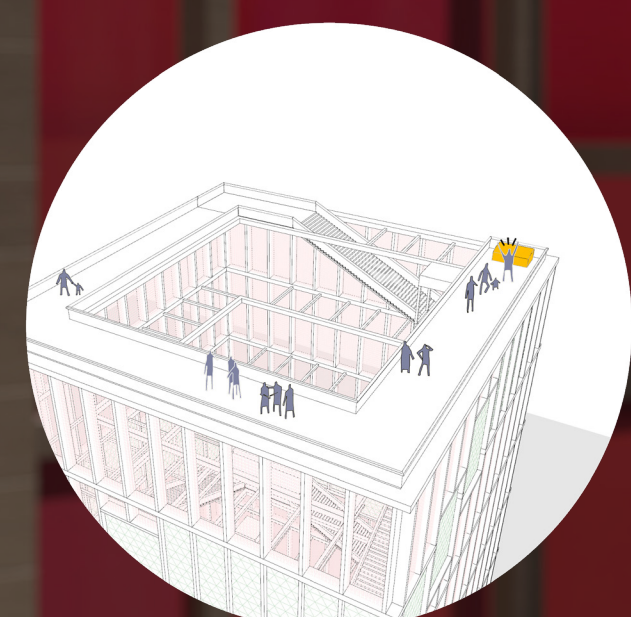
Climbing the monument is a metaphor of its own - a reminder that the path towards climate change is no easy feat - but one which will have a rewarding end.



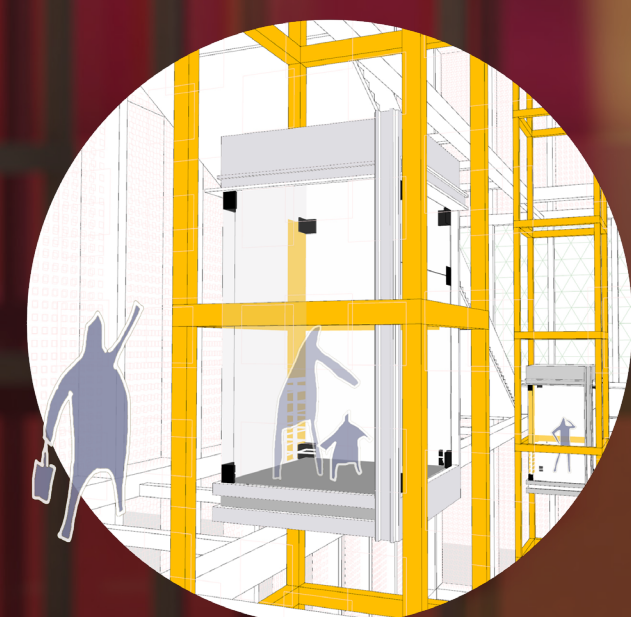
1. Challenge



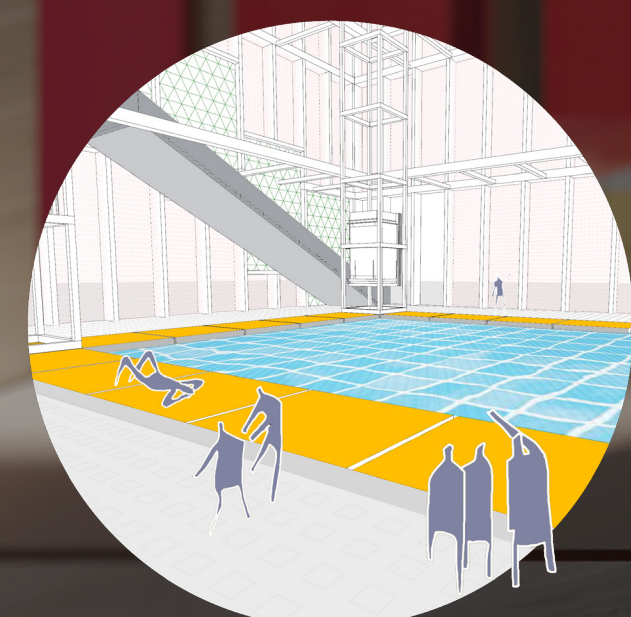
2. Glimpse



3. Vista



4. Relax



5. Repose



Spine
Pillar