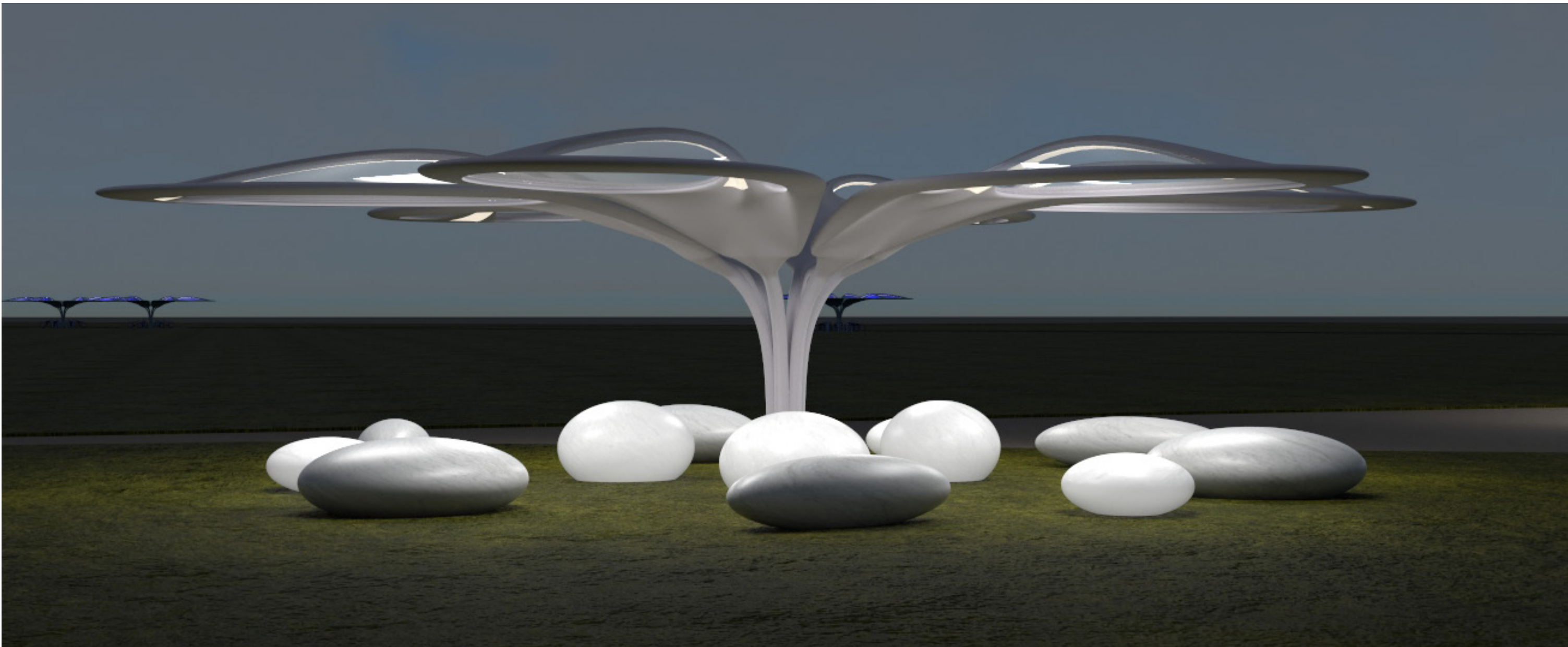
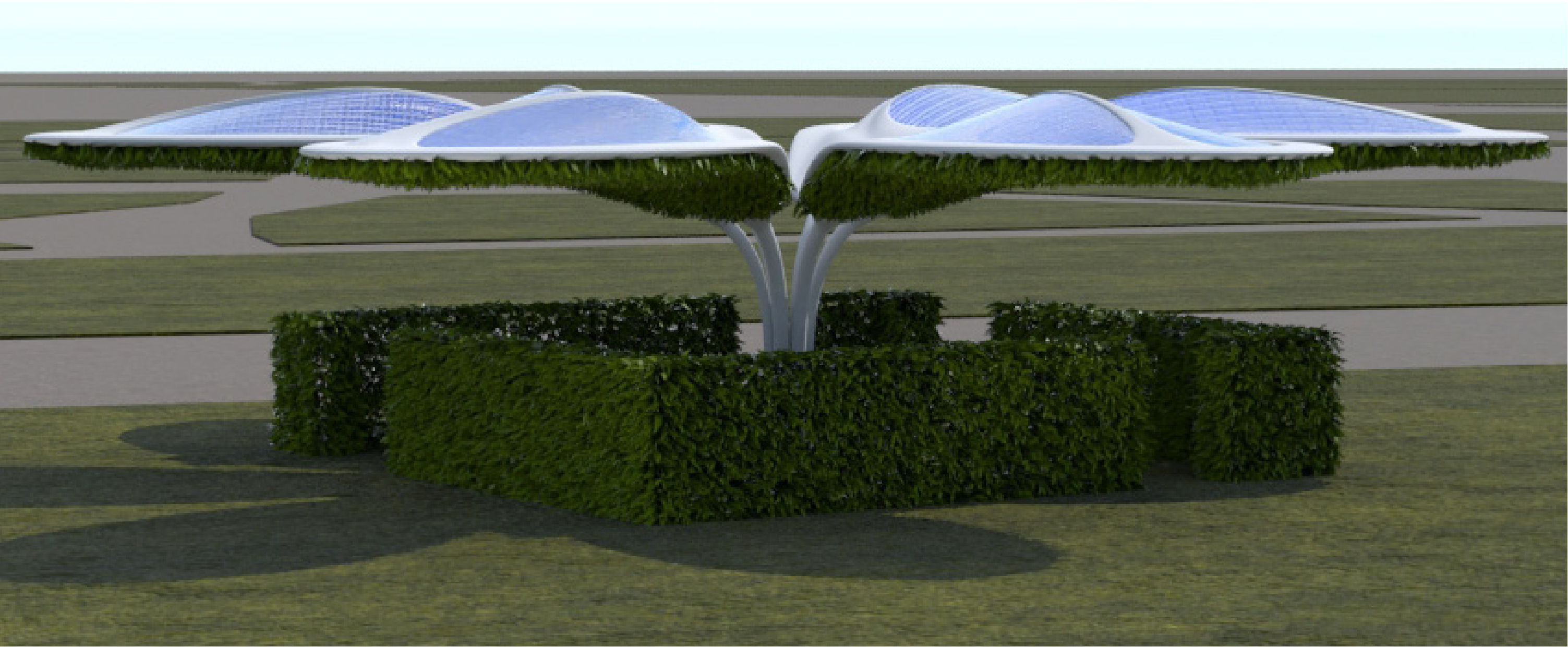
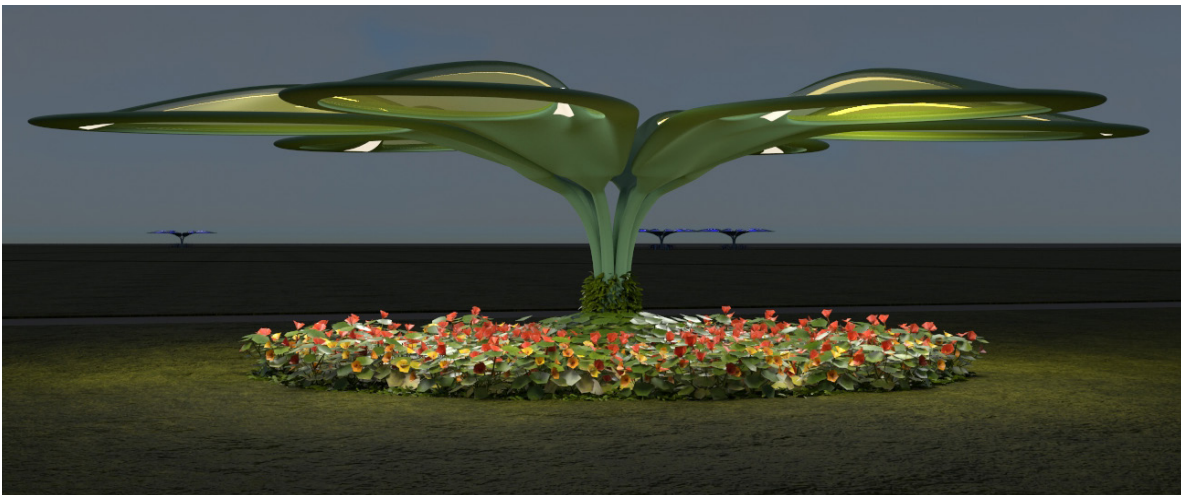
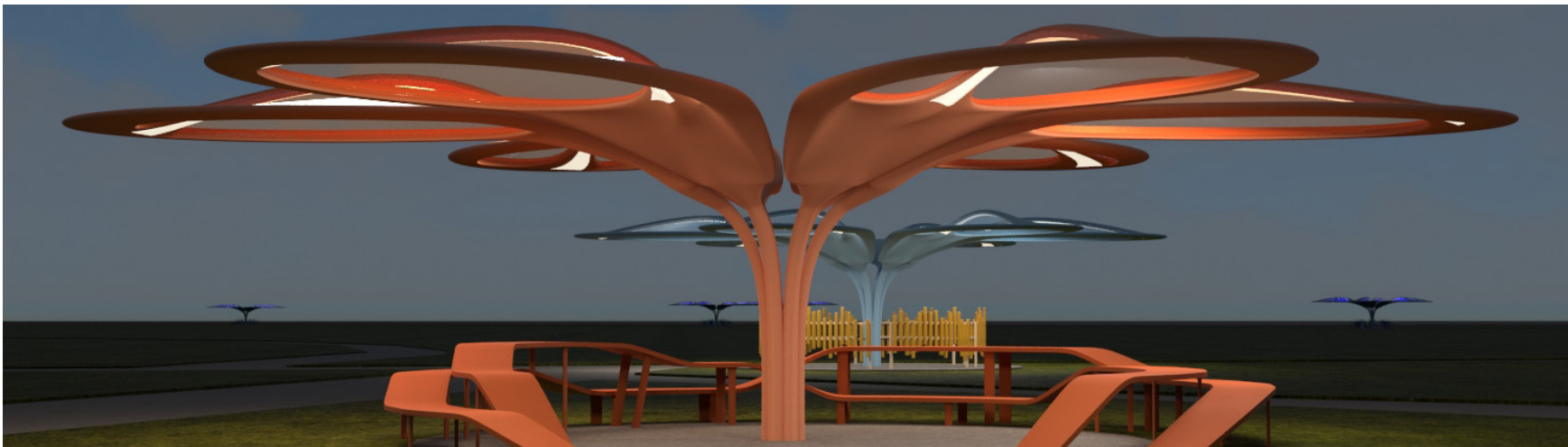
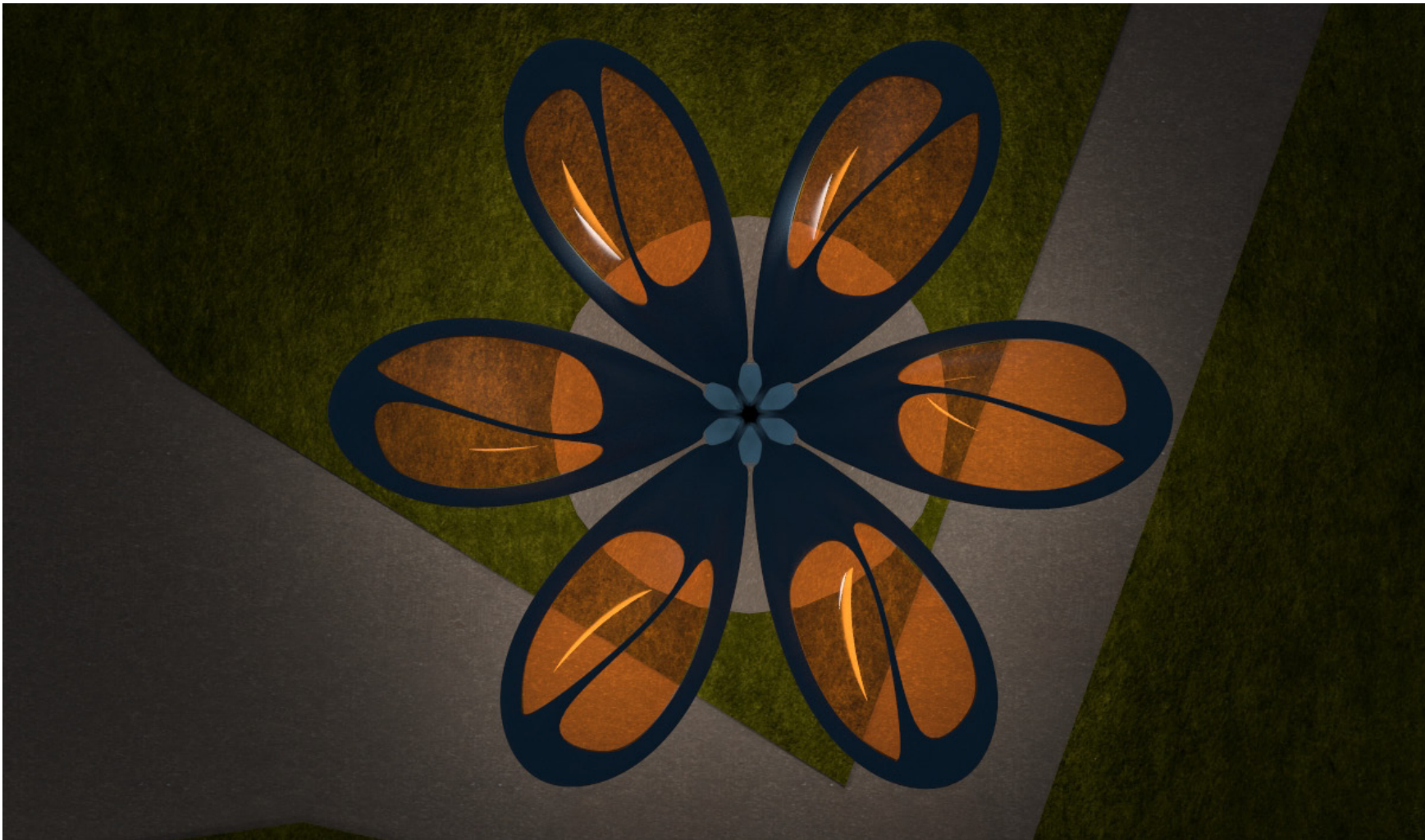


WHILE THE ENERGY TECHNOLOGIES REACH OUT FOR THE SKY, THE STRUCTURES CREATE ENGAGING EXPERIENCES AT GROUND LEVEL.



Model 1 sculptures are located along the bike expressway, standing for the country's record in mobility innovation, and provides electric charging for bikes, phones and educational tablets. The different colors of the LSCs help with wayfinding in the park, and provide shade and playfulness that is inviting to the children.



17 LSC sculptures (exhibiting the 17 colors the UN goals) of Model 1 are placed at the Westside of the park and 17 sculptures of Model 2 are integrated at the 17 vertical garden squares of the BUGA exhibition area.

The concept of Petal Power Place is scalable to any site receiving sunlight, but these net positive sculptures are designed integrally to the Spinelli Park masterplan. The sculptures have different plug-and-play components that allow for a versatile use across the park.

Model 2 sculptures are located in the BUGA exhibition to provide shaded resting spaces to visitors, along with providing the BUGA landscape designers with a canvas to design with plants that can integrate with the landscape design of BUGA. After the event, they can be used to farm energy crops/ plant food.

The Model 2 sculptures are located towards the north of the site which is closer to the biomass production facility planned near the climate park section of Spinelli. The sculpture itself performs as an on-going 'flower' show as it lights up at night.

