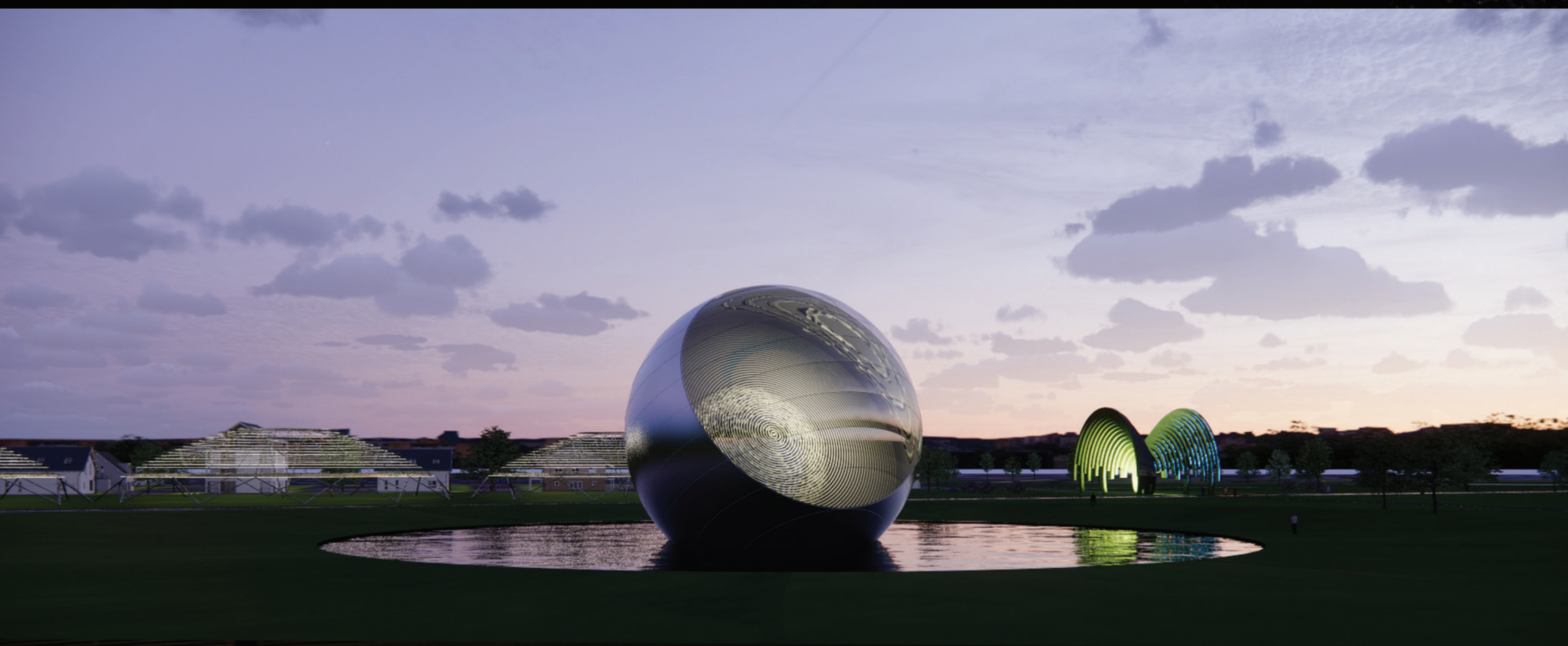




Data Lightways

Photovoltaic panels, kinetic floor tiles, 3D printed structure. The archways are lit by the stored photovoltaic energy. The kinetic floor tiles generate energy from footsteps and dance events. The archways display the total amount of energy produced by TEAG.



Energy Sphere

ETFE and PTFE inflatable form. Concrete anchor in water basin, with aircraft cable ties, motorized winch system aluminum solar - collector panel. Photovoltaic panels and thermodynamic generator system create power which is sent to the grid and used within TEAG to power the park facilities.



The ***Concetrator's*** sculpture surface rotates as it follows the sun and creates electricity in 2 ways—one from an ETFE transparent thin film photovoltaic system, the other from a solar heat concentration to glycol liquid spiral connected to a Climeon (climeon.com) device. This spiral would be inside a ETFE ovaloid shaped inflatable membrane.