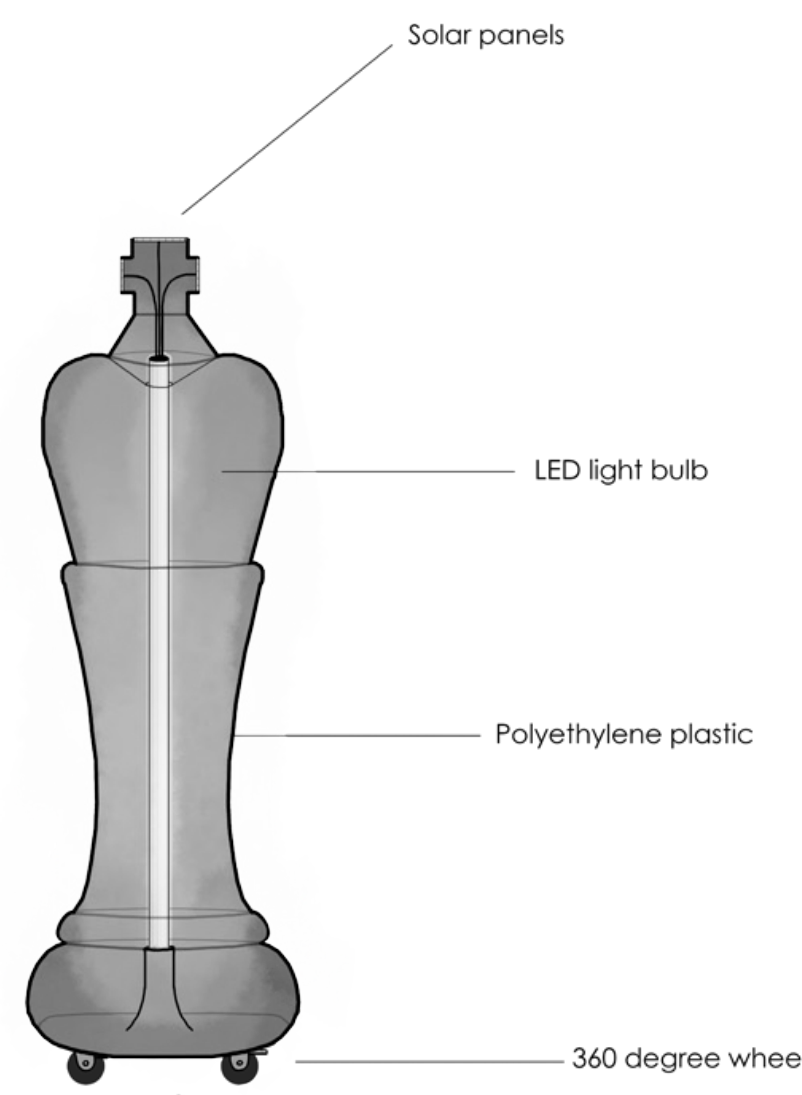
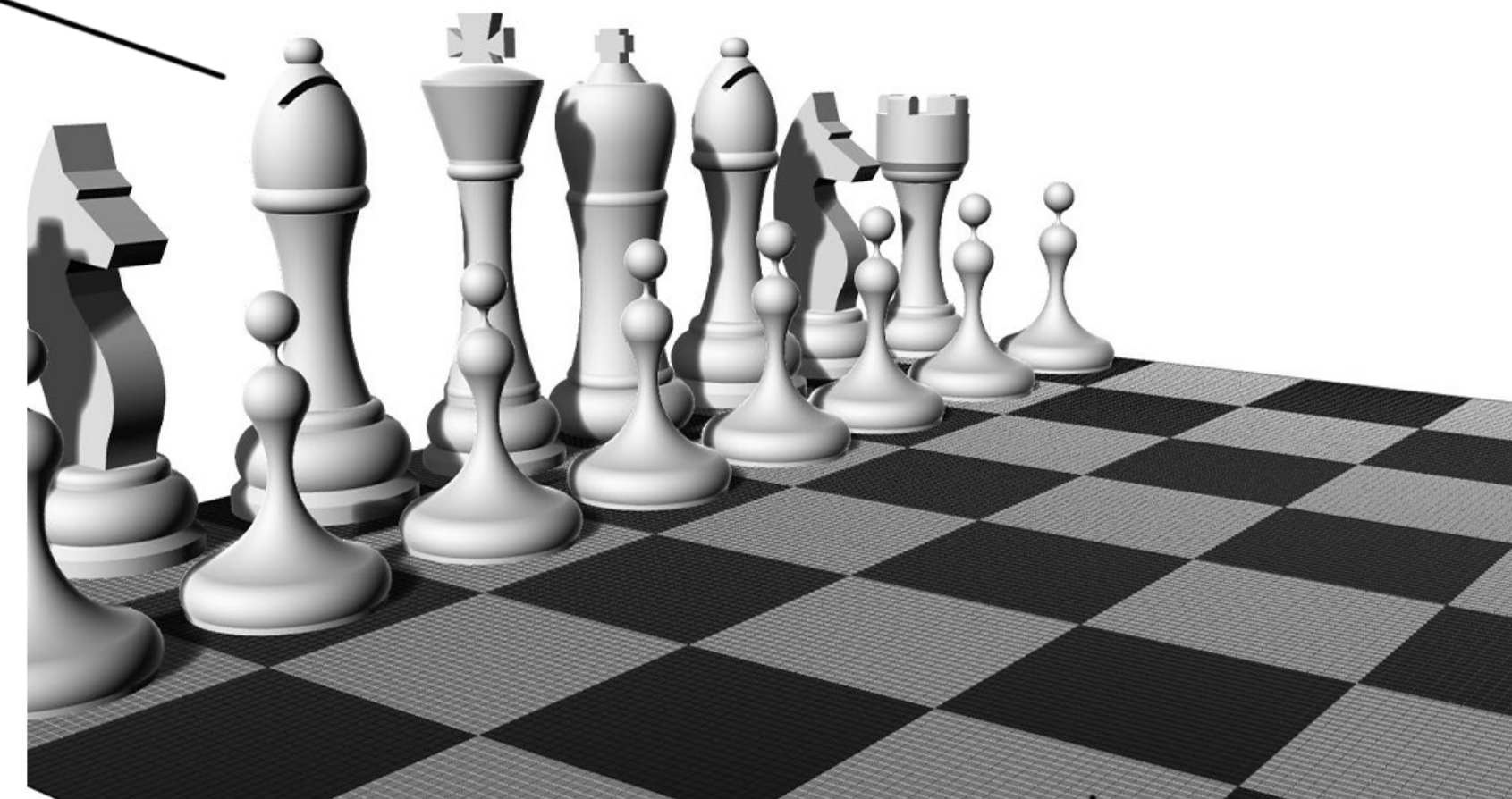




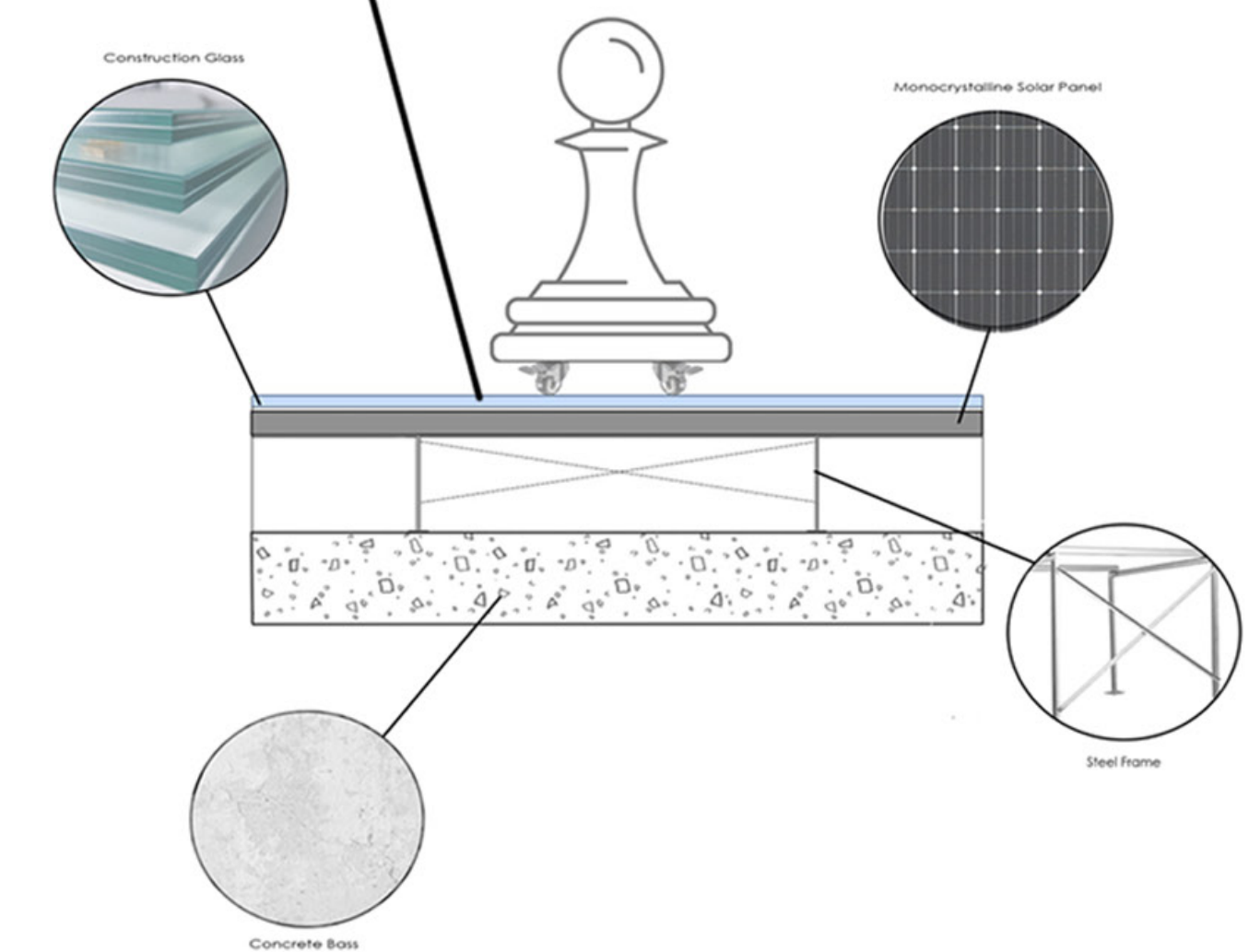
Above you can see the chess peices illuminated at night which allows for evening use



The chess pieces on the boards have solar panels on the tops of them connected to an LED lightbulb inside the pieces which illuminates them at night. Creating the idea that chess can be played anytime, anywhere, by anyone.



Looking at our design of the chess board, our whole idea is that we used solar panels as the squares within the boards. We have black monocrystalline solar panels for the black squares on the board and white solar panels for the white squares on the board.



White Solar Panel - 290 W
- 11.4% efficiency
- About 76.8 MWh for 256 panels



Monocrystalline Solar Panel - 285 W
- 15-20% efficiency
- About 109.44 MWh for 256 panels