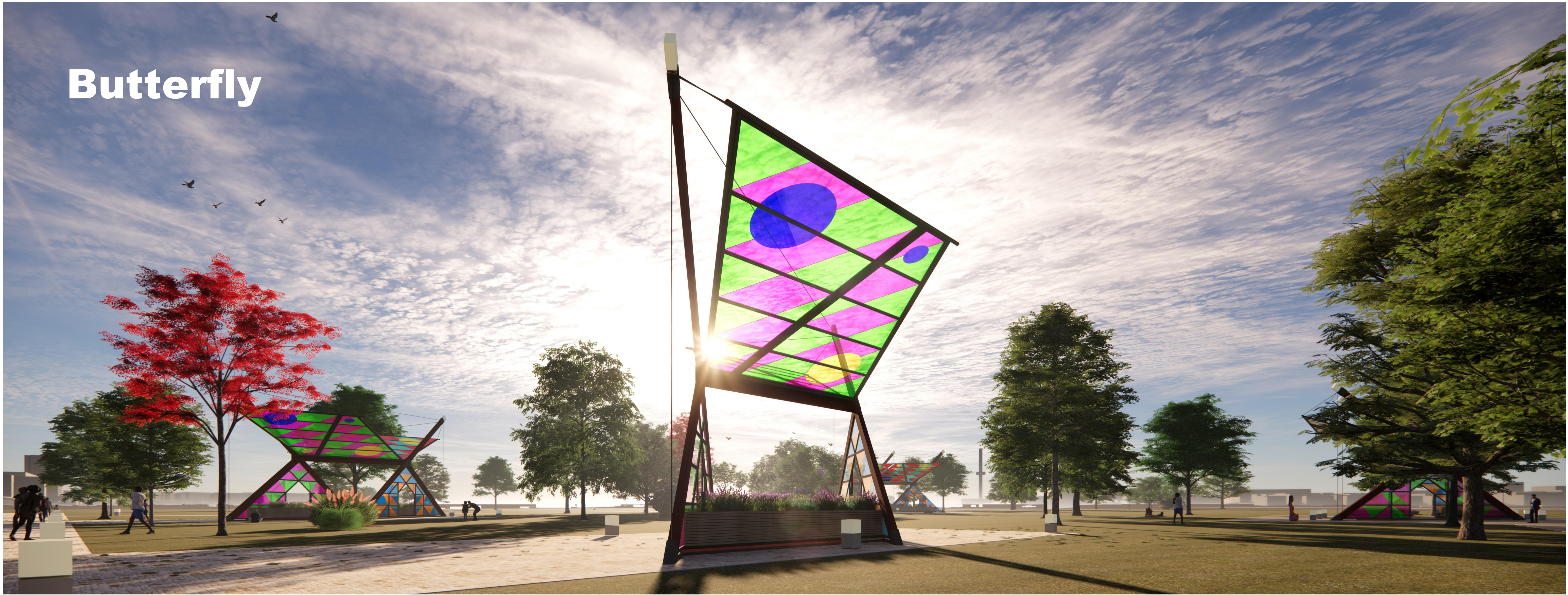


Butterfly

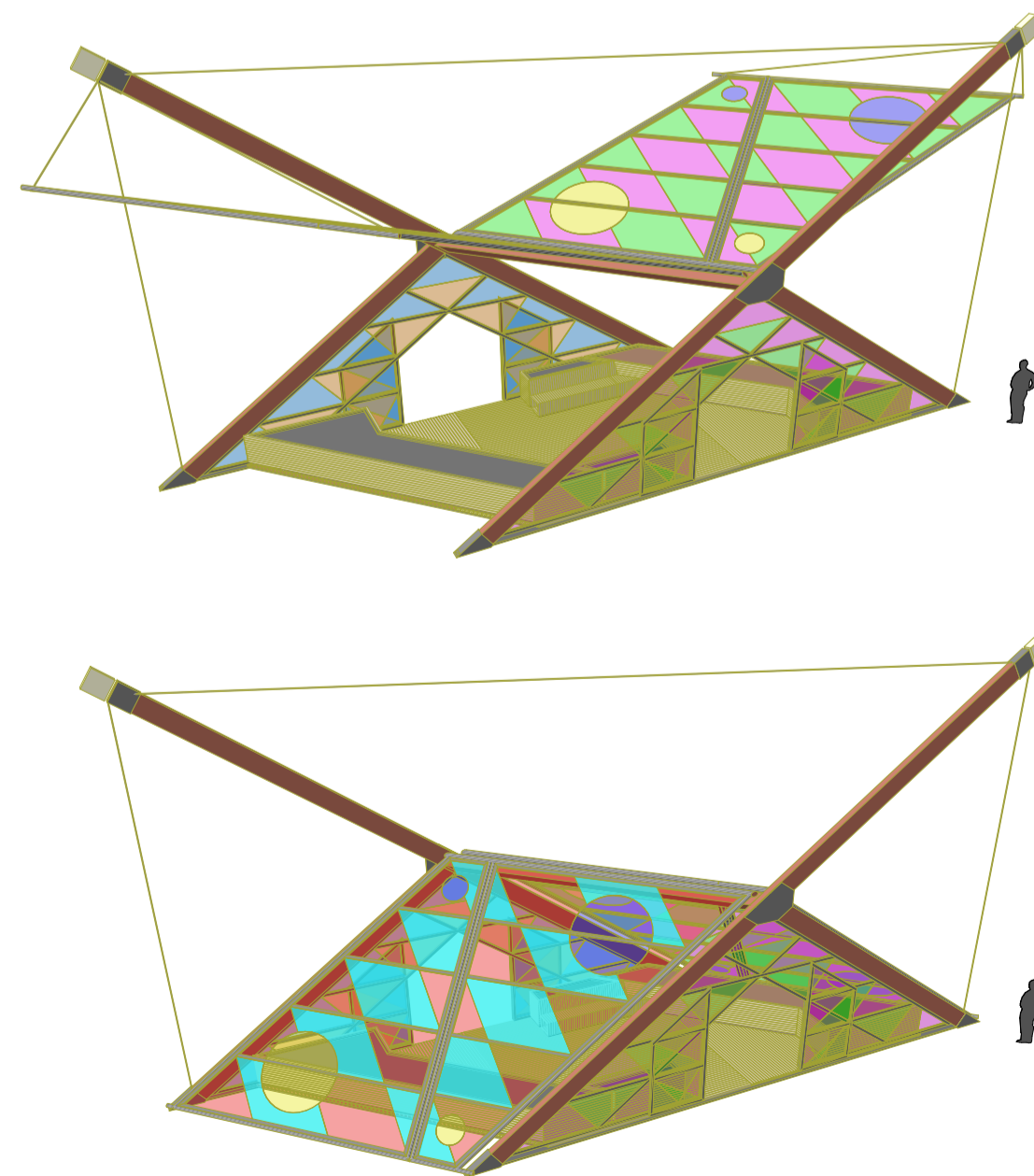


The Butterfly

The proposal is inspired by this singular being, in its life cycle, intimately linked to the climatic cycles of the planet, and in some of its most outstanding formal values such as the balance of its formal composition, the lightness of its materiality, and the variety and harmony of its coloration.

Thus, the proposal explores the possibility of transposing in a certain way to an object produced by human hands some of the attributes and characteristics that humanity has always admired in this insect, through the construction of an installation with a versatile and adaptable character, light and colourful, sustainable and friendly to the environment and that can be arranged both in civic spaces in the open air, and in private gardens.

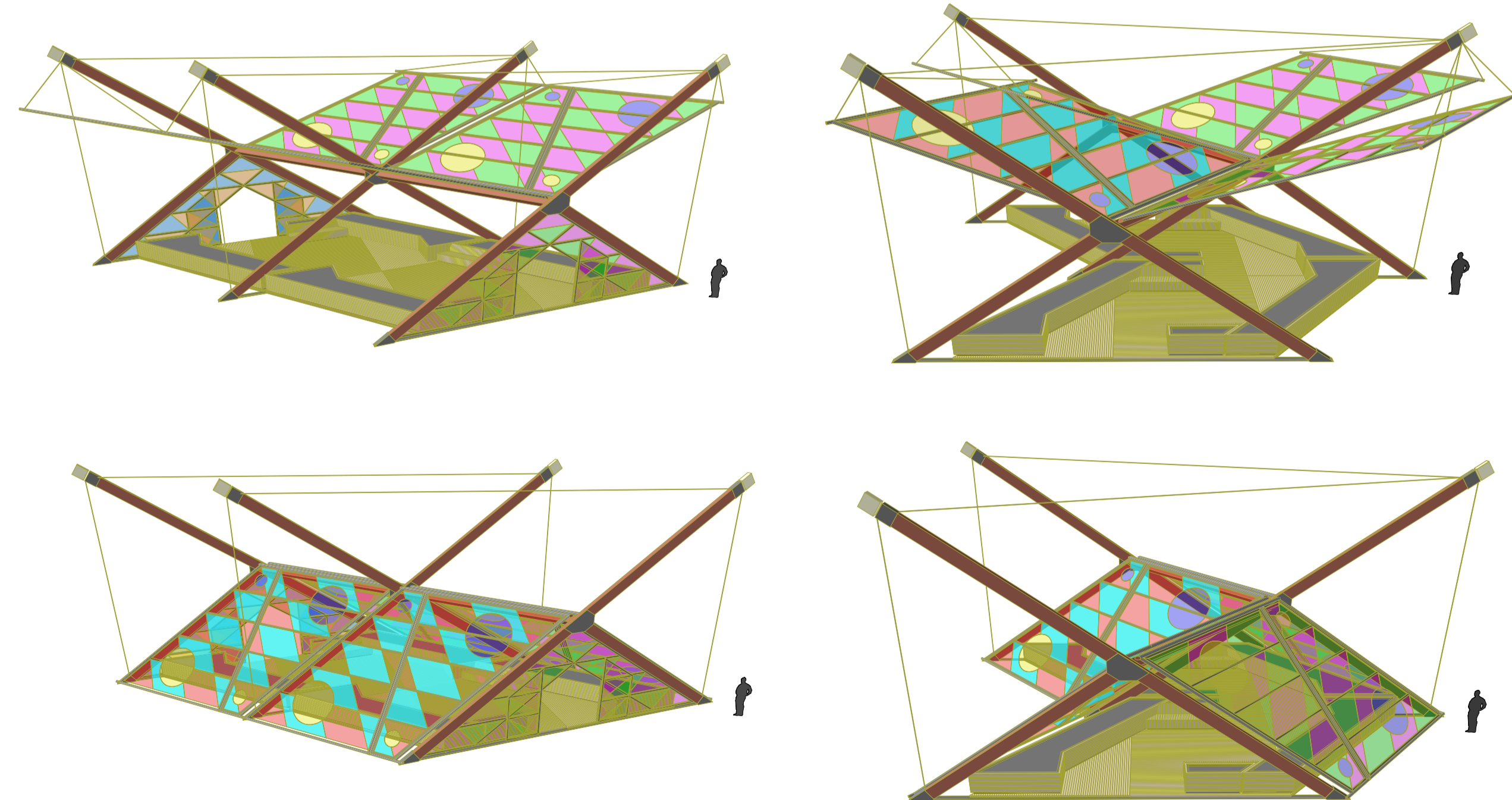
Its versatility



The versatility of the proposed Installation is based on the opportunity to operate on it some easy adaptations that allow it to fulfil different functions or uses according to the seasonal cycles and the specific place where it is implanted; either as a place to be covered, during the most benevolent seasons in climatic terms, or as a greenhouse or closed shelter at the least favourable times of the year, and thus improve climatic comfort within the installation.

The facility's adaptability capacity is achieved by equipping it with two side solar panels, which can be folded down in the manner of butterfly wings through a manually operated cable and pulley mechanism, to transform it from an open element to a closed shelter or vice versa.

Modularity and scalability



The modular design of the proposed Facility allows it to be expanded by attaching two or more units under various arrangements, as illustrated in the pictures.