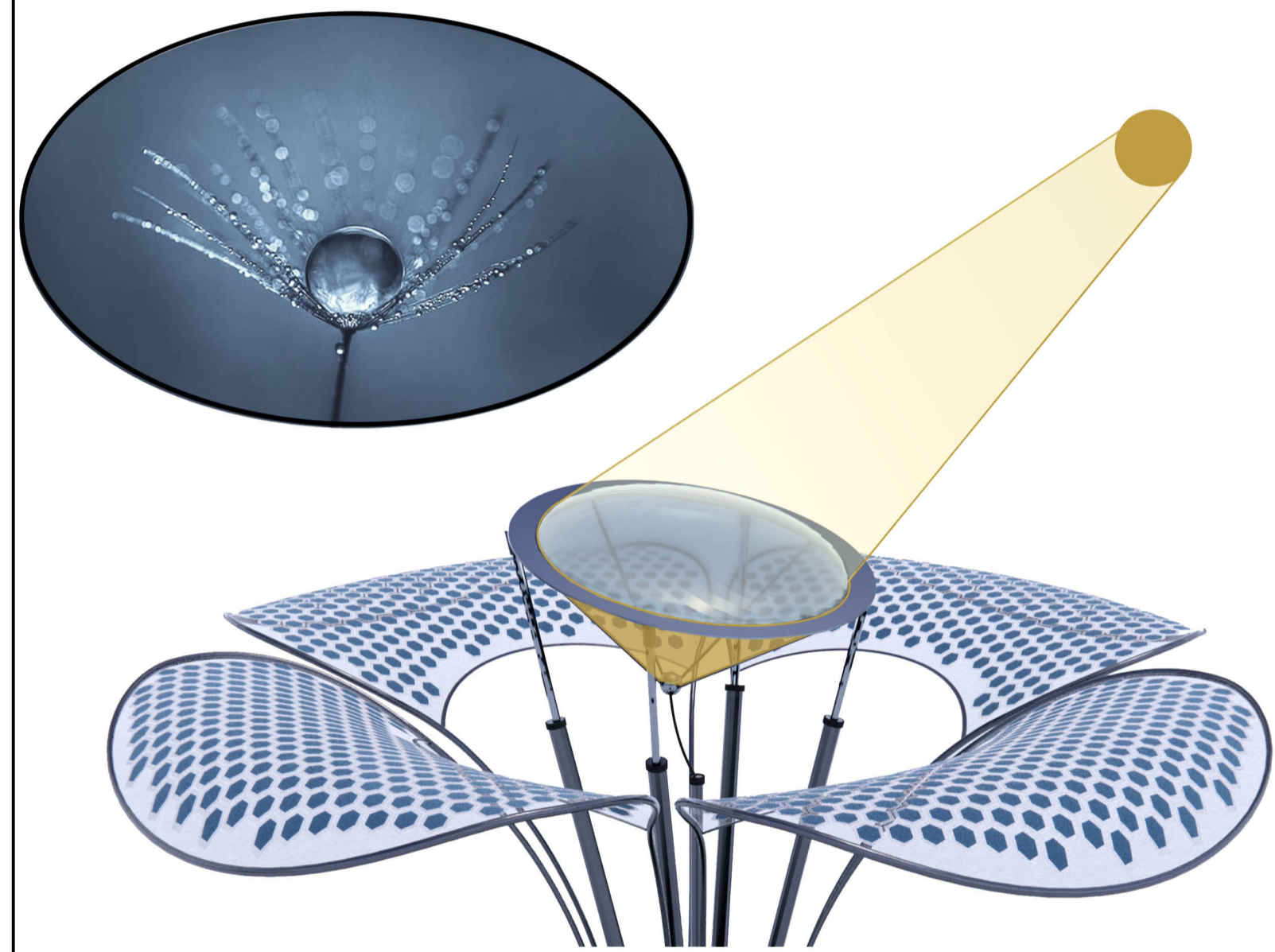


LAGI 2022

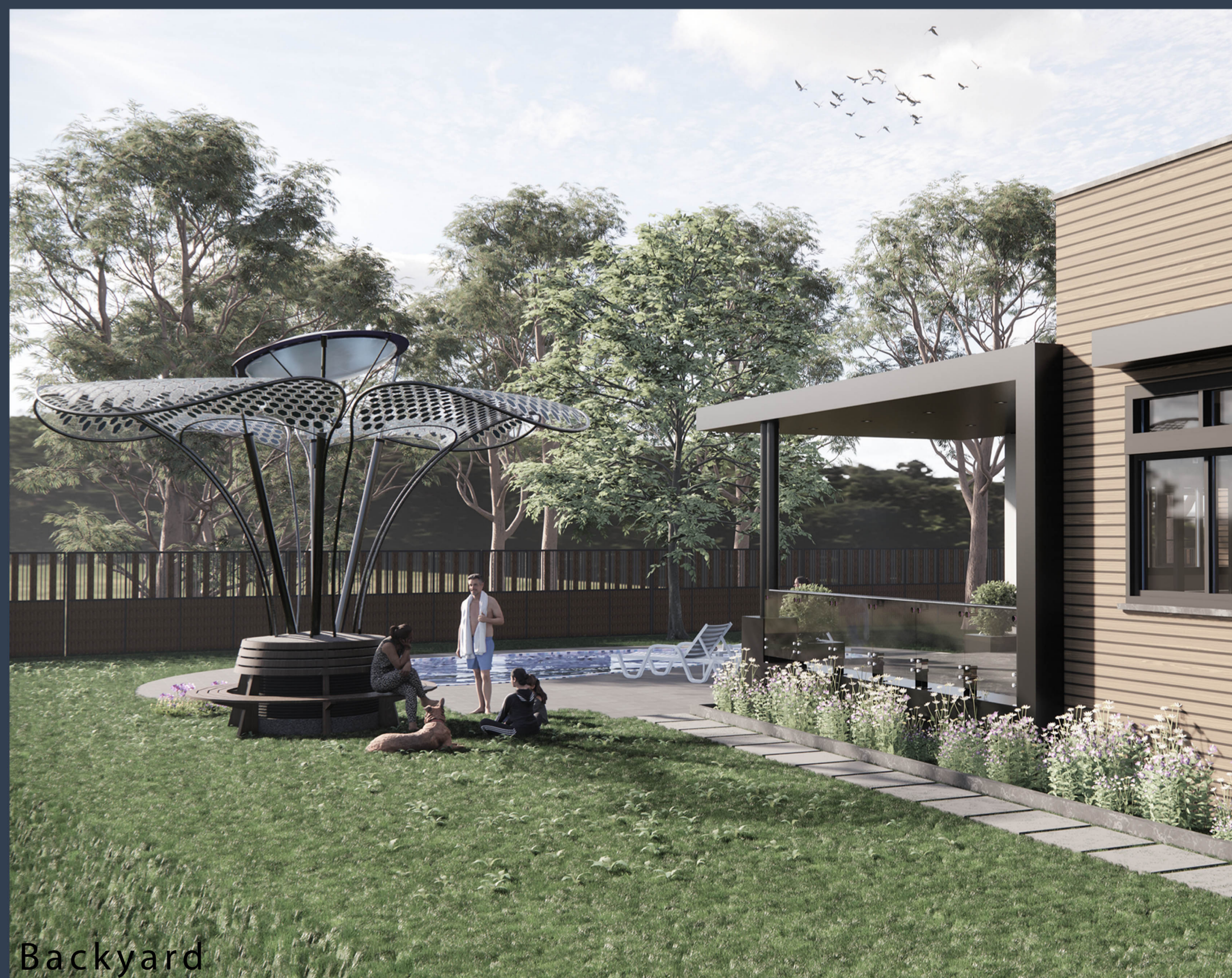
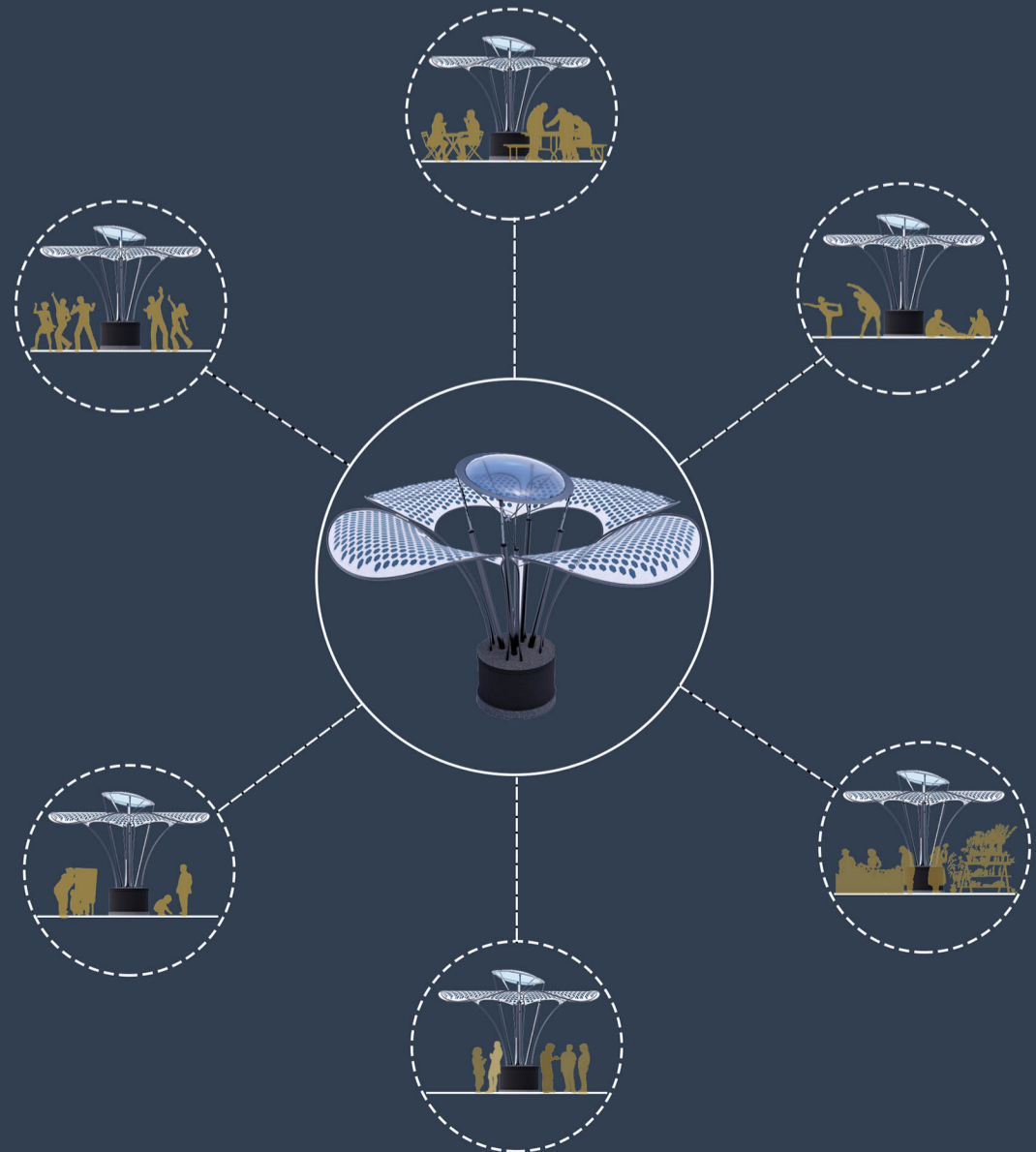
The Sun Flower

The concave lens used for the middle part of the flower, focusing sunlight in the focal point, is constructed by gluing together two curved transparent plexiglass sheets, and filling the space between these two sheets with water. Water is a cost efficient, and available material with some physical features. One of the amazing physical characteristics of water is magnifying. In nature, we witness many situations where a drop of water magnifies the shapes of the surface underneath the drop. As a result, in our design we benefit from this feature and use water to construct the lens.



Kleingarten

There are various uses such as a place to sit, relax, spend time with friends and family, drink and enjoy the space and fresh air, organize local markets or even small exhibitions in the open air in parks or the kleingartens. And also, a gathering place for the backyard of the houses are some other applications of this design.



Backyard



Mannheim Park