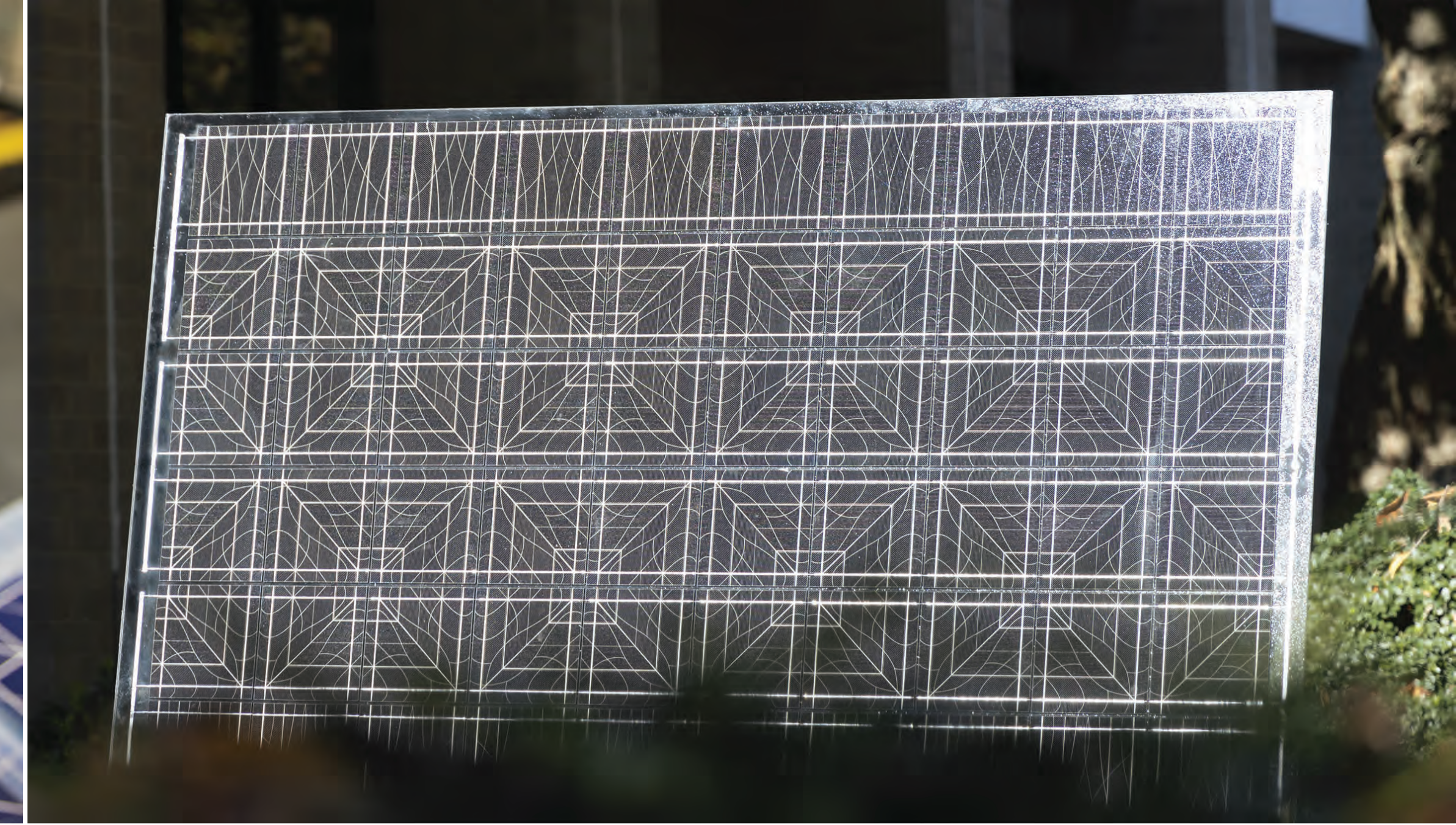
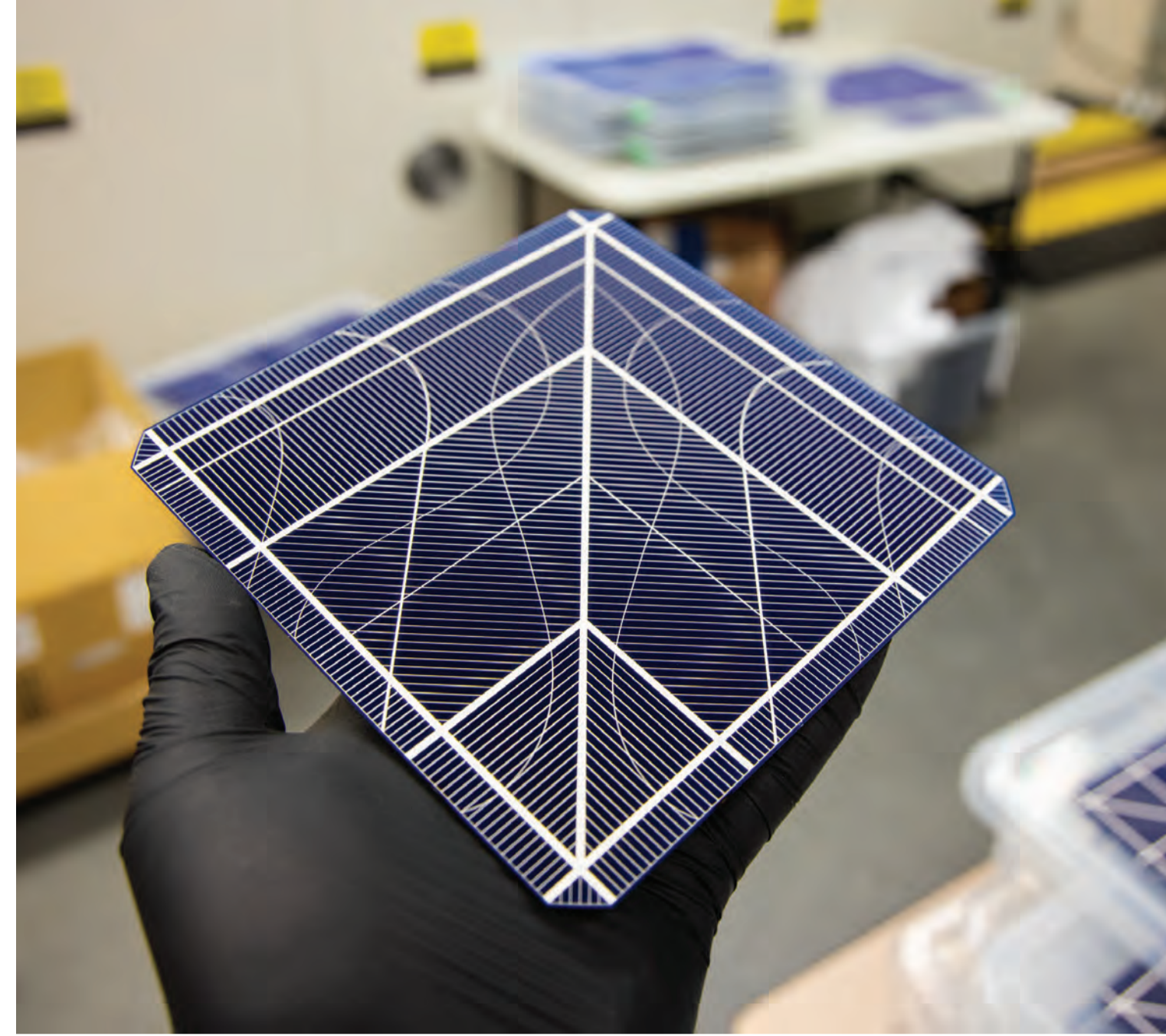
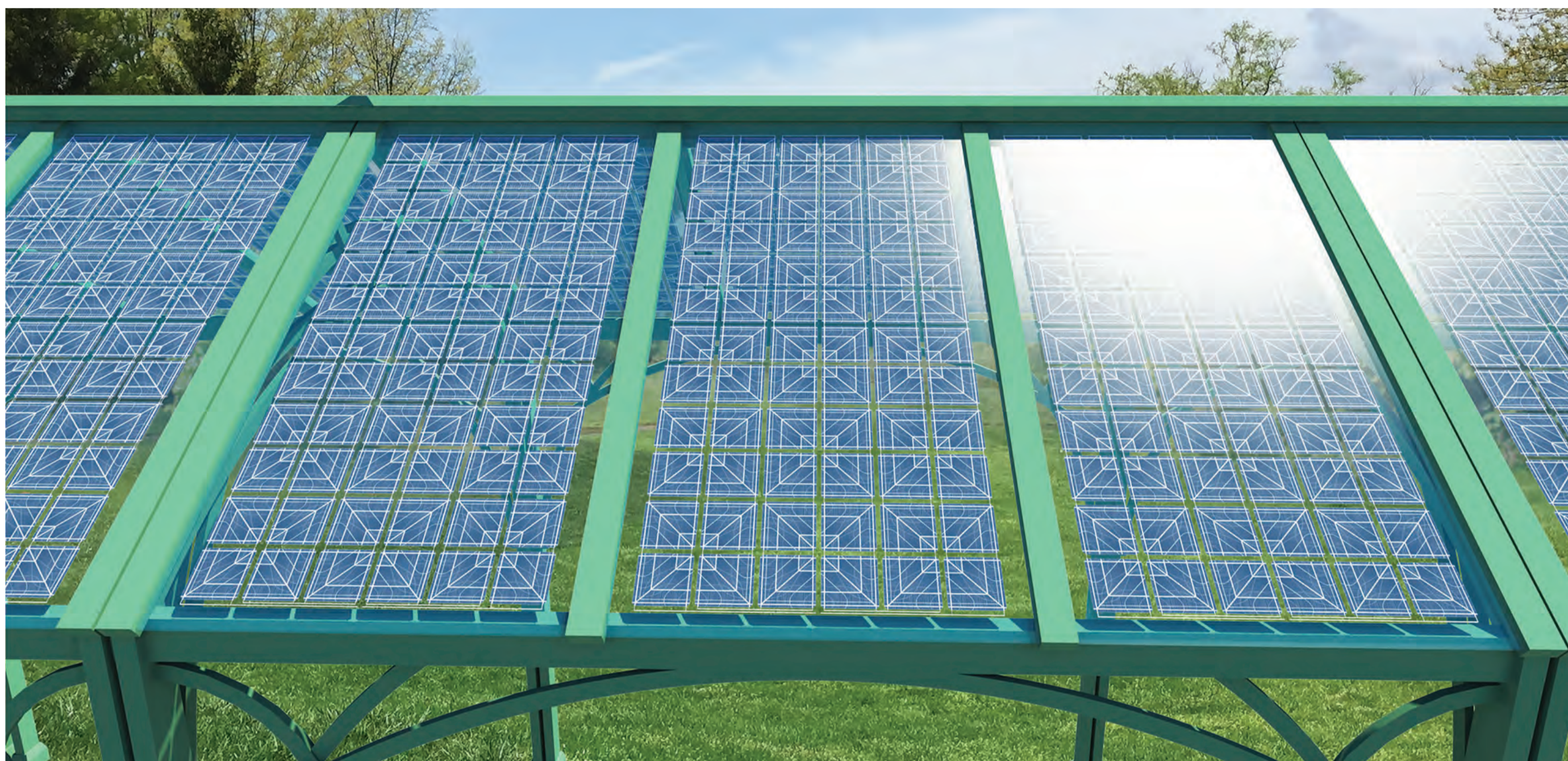


New techniques are enabling the design of custom aesthetic solar cells, which can be assembled into high-efficiency, partially transparent solar panels with attractive patterned surfaces. These decorative solar panels can compliment landscaping and architecture as part of the visual language that defines an inviting gathering place.



Custom decorative solar cells combine form and function in micron-scale electrical contacts. The resulting solar panel gains artistic symmetry and rhythm on a larger scale.

Solar panels with attractive tiled patterns feature transparent areas that create dappled shade below.



SunPath arbors can be installed over walkways to protect pedestrians from the sun and rain, or they can be placed to the side of pathways to shelter areas for resting, gathering, and dining.

