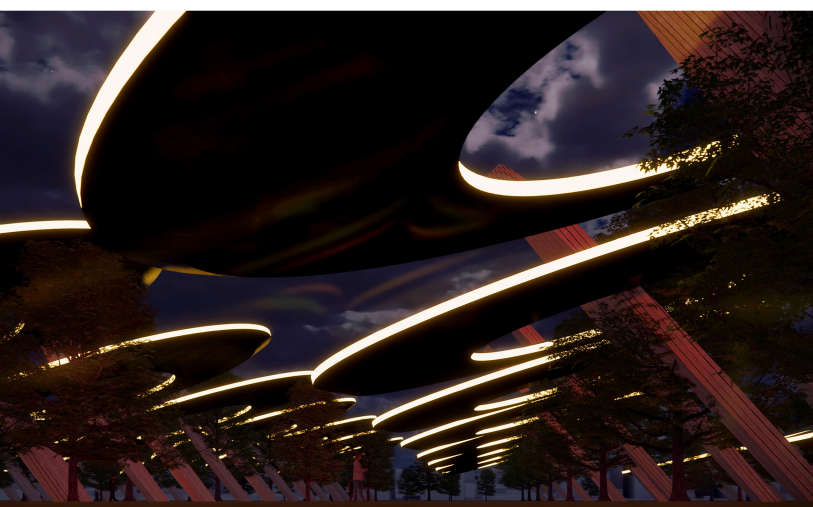
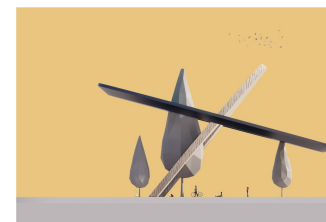


The parts used in the construction of of life have the ability to rotate in direction to take the desired shape according to the needs of the environment. This idea is to rotate in two points, one of which is located at the base of the structure and the other is located at the junction of the wooden support plate in a certain direction. The next point is at the junction of the solar panel and the wooden support plate that rotates the solar panel in a certain direction. After the rotations and the structure takes the desired shape, the points are fixed and hardened so that the sunlight is used correctly and completely. The public can enjoy its shade and sit under it. This ability to rotate makes it possible for us to build different spaces and we can use the least amount of time.



Using the electricity it stores during the day, it spends some of it to light the structure and provides a safe place for the public to sit under it.

