

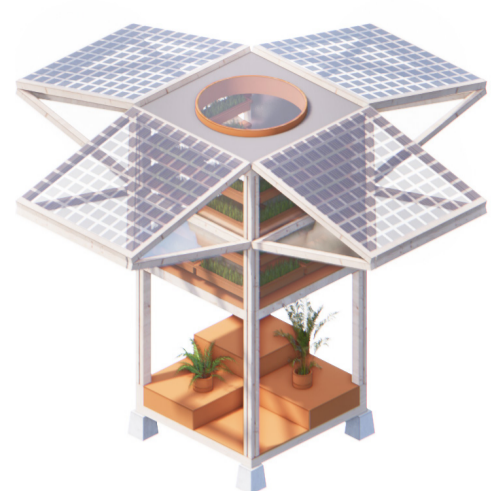
Transformation

Outer layer of the Bloom adapts by opening and closing following the sun conditions. It have predefined open angle for the specific month and season during the year, to generate possibly max energy from solar panels. During the night or cold seasons it close entirely to protect plants and public space inside.



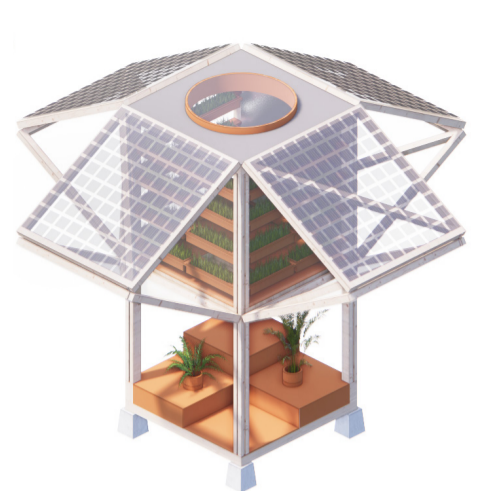
Summer

- tilt angle from 15° - 35°
- public space open during the day/ night closed
- greenhouse: operational



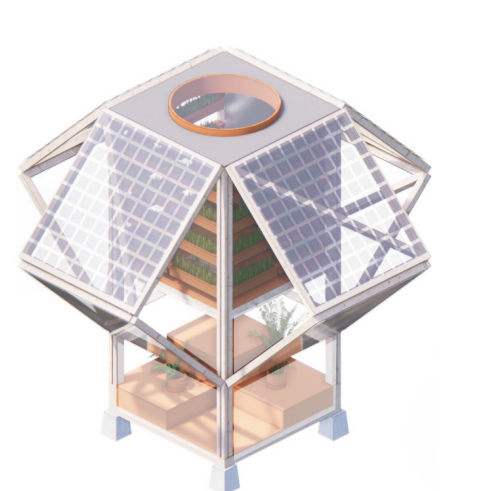
Spring

- tilt angle from 35° - 50°
- public space open during the day/ night closed
- greenhouse: operational



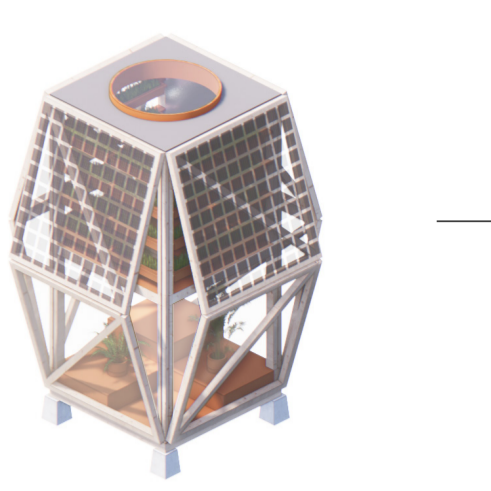
Autumn

- tilt angle from 50° - 65°
- public space closed / inner polycarbon curtain
- greenhouse: operational



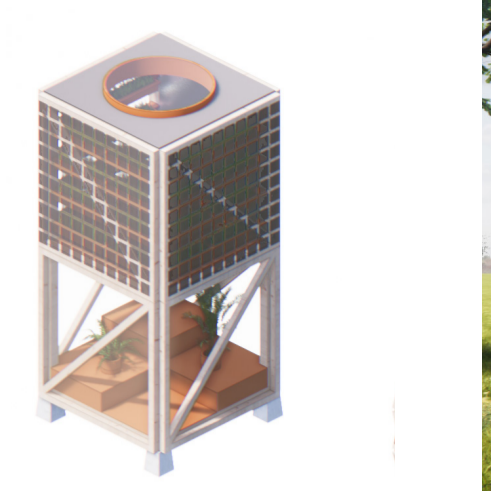
Winter

- tilt angle from 65° - 75°
- public space closed / inner polycarbon curtain
- greenhouse: operational



Night

- tilt angle 90°
- public space closed
- greenhouse: operational



Spinelli Park

There are multiple strategies how Bloom project could be applied in the new park masterplan. Located near planned pathway or in the middle of the green field. Spreaded out in single points or grouped together in bigger cluster.

Accupuncture

Location strategy working as a Bloom clusters located in a specific points in the parc landscape.



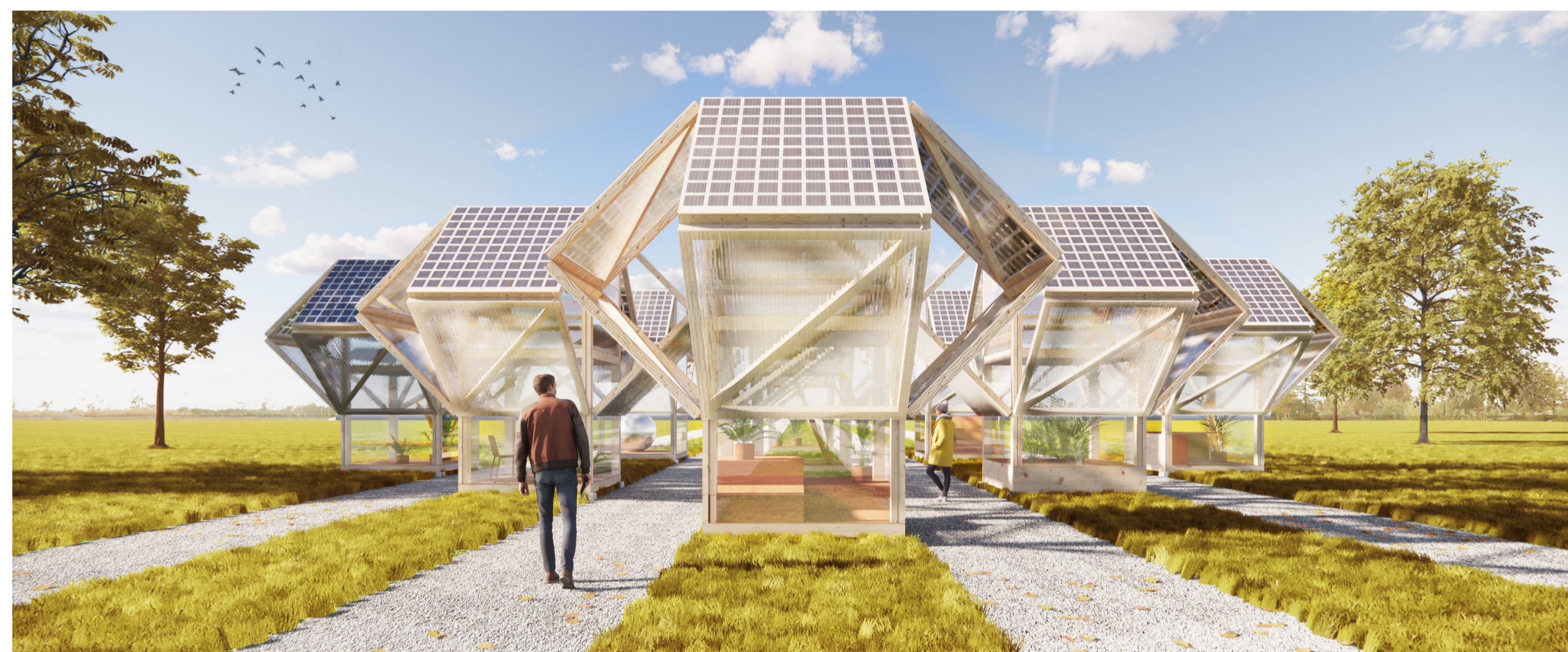
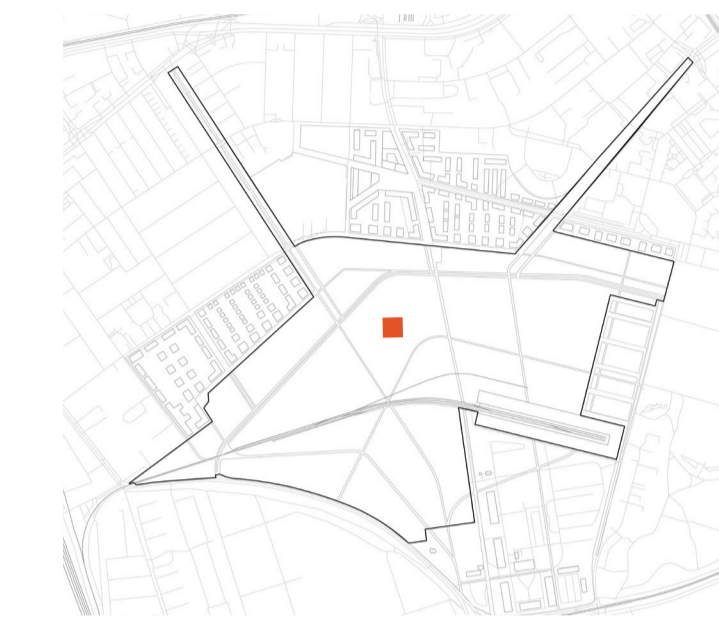
Point grid

Orthogonal south-north pattern of single Bloom modules that define power generating layer for the park and create reference to the grid character of the old town.



Single island

Bigger cluster of Bloom modules located in one specific location where public spaces works as interconnected system.

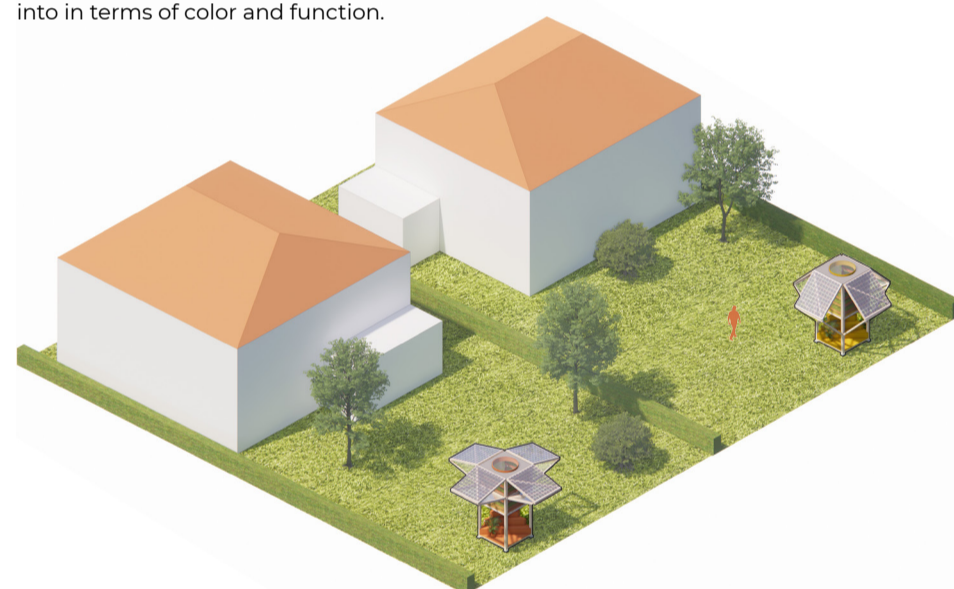


Contexts

Modularity of Bloom project and its scale fits to various private space contexts. Private use Bloom could be personalised in terms of modules fit out and its colour.

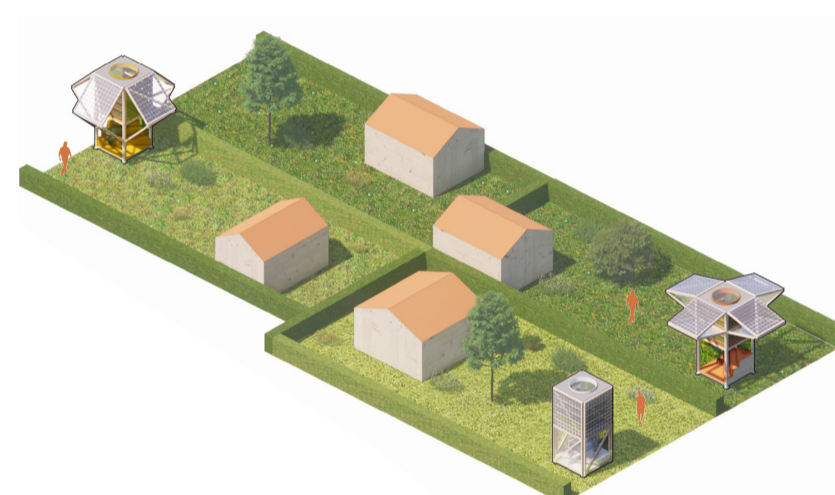
Town house backyard

Bloom in house backyard could generate clean energy that will meet most of the household energy demand plus serve as a garden pavilion that could be personalized into in terms of color and function.



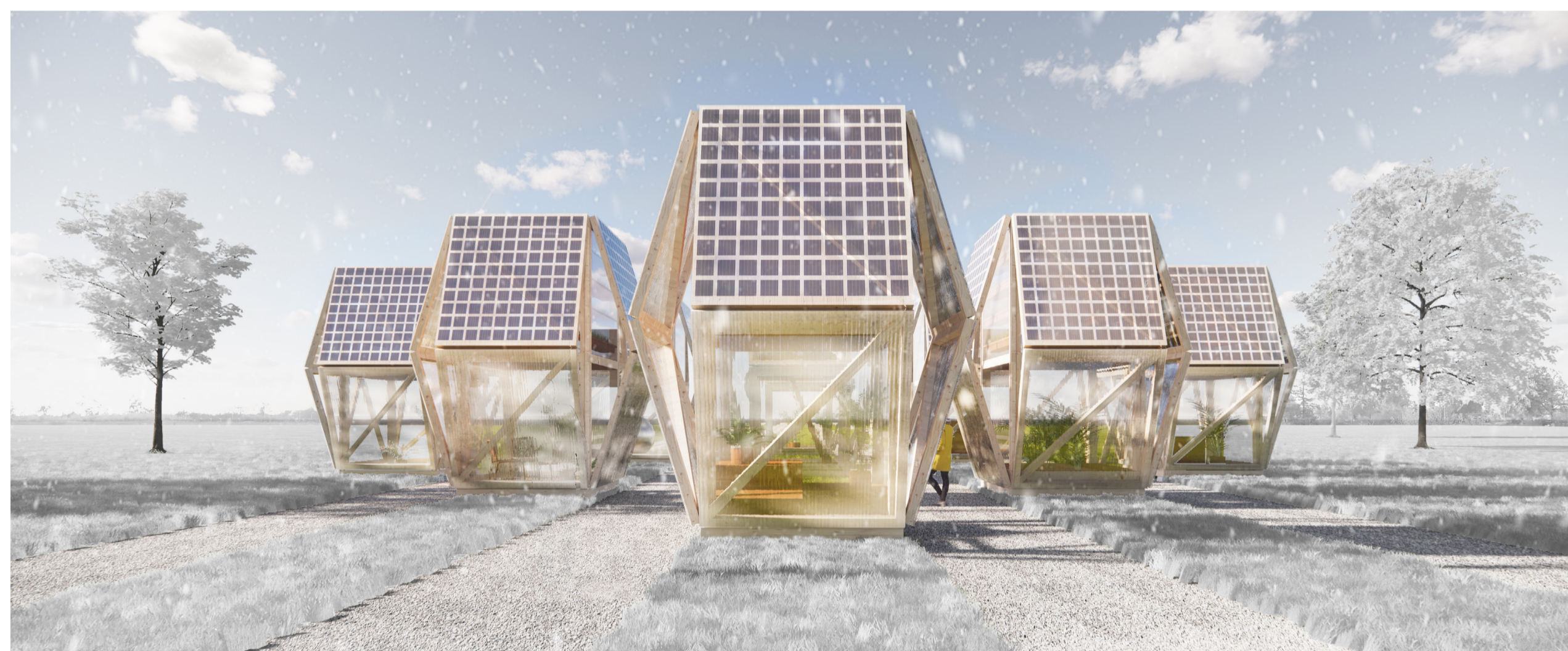
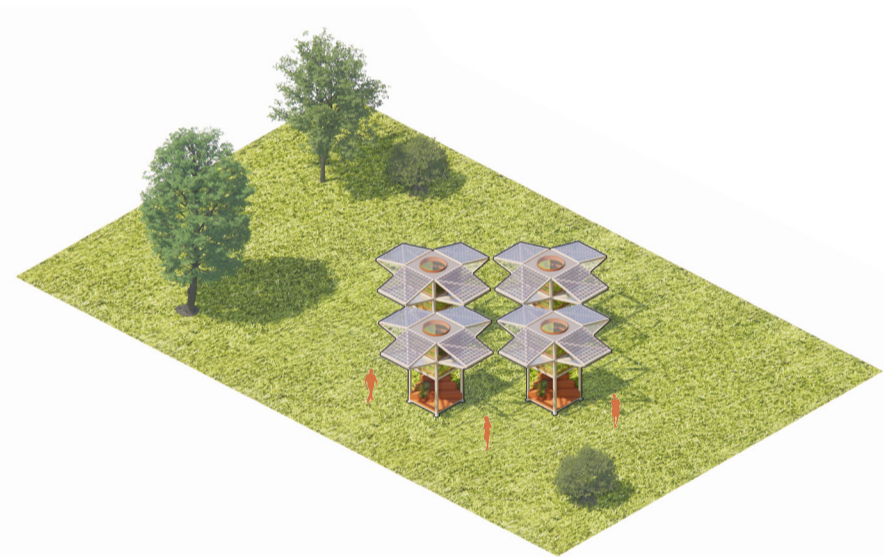
Shrabergarten

Blooms in shrabergarten could be private or shared by multiple owners. Personalised in terms of function and colour. Could power up garden plots, store energy or sell it back.



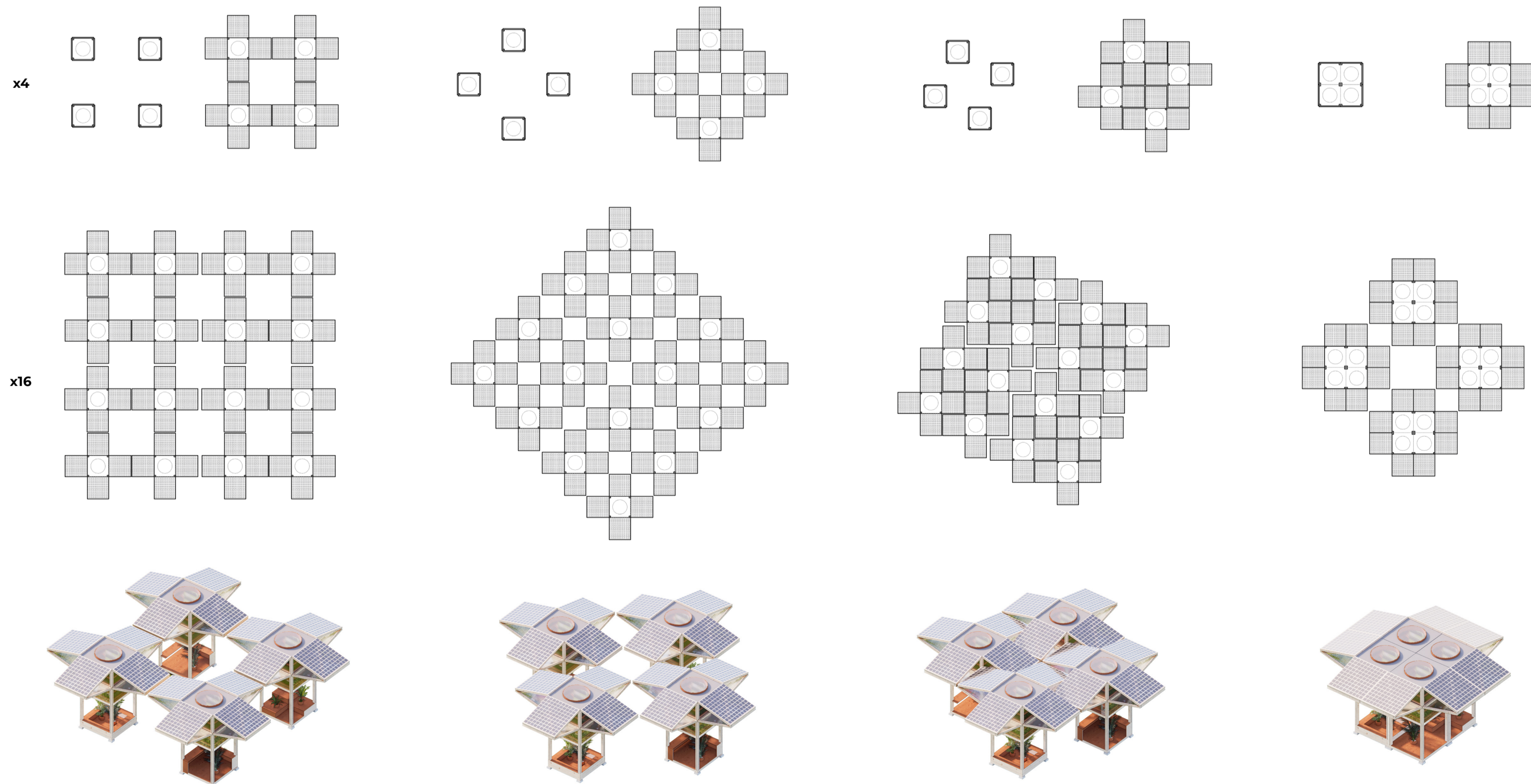
Park or square

Blooms in a larger public space could work stand alone or create a landscape of interactive patterns, where public spaces relates to one another.



Fractal patterns

Modular character of the project offer scaleable, flexible layouts that can grow fractally. Depending from the desired density, interaction between the public spaces and their desired social function.



0 5m 10m

