

hyphae

VISION

Developed vision is to enable the growth of the community that will work **symbiotically with the environment**, nature and the surrounding events. Fly Ranch community will inhabit the area using structures created with the help of **mycelium (fungi)**.

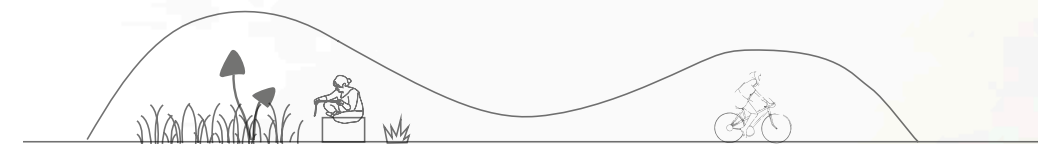
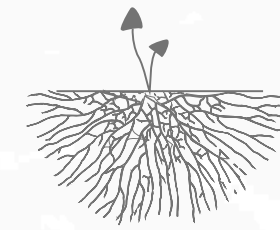
The idea is a building system and a construction **principle of modular objects** using locally produced biomaterials. The structures are variable, replicable and easily assemblable and decomposable.

The essence of the project is an innovative fusion of a **local tradition** of N. Paiute inhabitants and a **natural technology**.

MYCELIUM

Mycelium works as an **ecological binder** of given substrate (chopped wood, biowaste, ashes...)

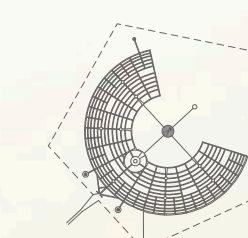
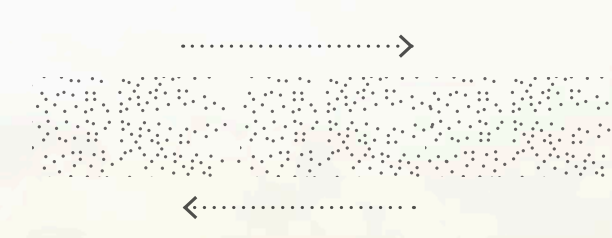
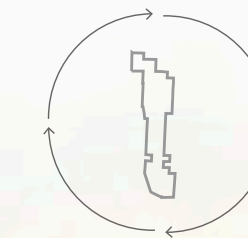
As a result, there is an **ecological bio-material** of variable use allowing construction of object depending on the actual need.



SYMBIOTIC CIRCULAR SYSTEM

There is an **annual income** of sources to the Burning Man festival (food, wood etc..)

These sources can be easily **transformed** (chopped, mixed) into substrate for mycelium growth



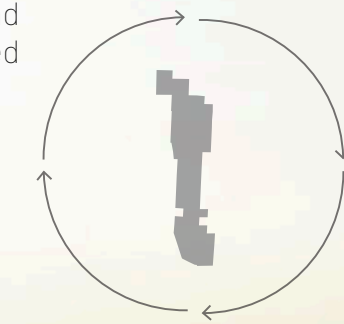
Unused constructions can be **used again** at the Burning Man festival

The building material consisting of **recycled Burning Man waste** and mycelium shall be used for the needs of Fly Ranch.

ANNUAL CYCLE

SPRING

Collection of a runoff water from the surrounding mountains and its retention in the area. Recycled waste from the festival.



SUMMER

Collection and processing of a **material from the festival** and its transformation to the mycelium substrate.

WINTER

The unused wooden and mycelium structures can be used to **heat up the area**.

AUTUMN

Building of new structures from the newly grown material. Transformation of the object to the winter regime.

