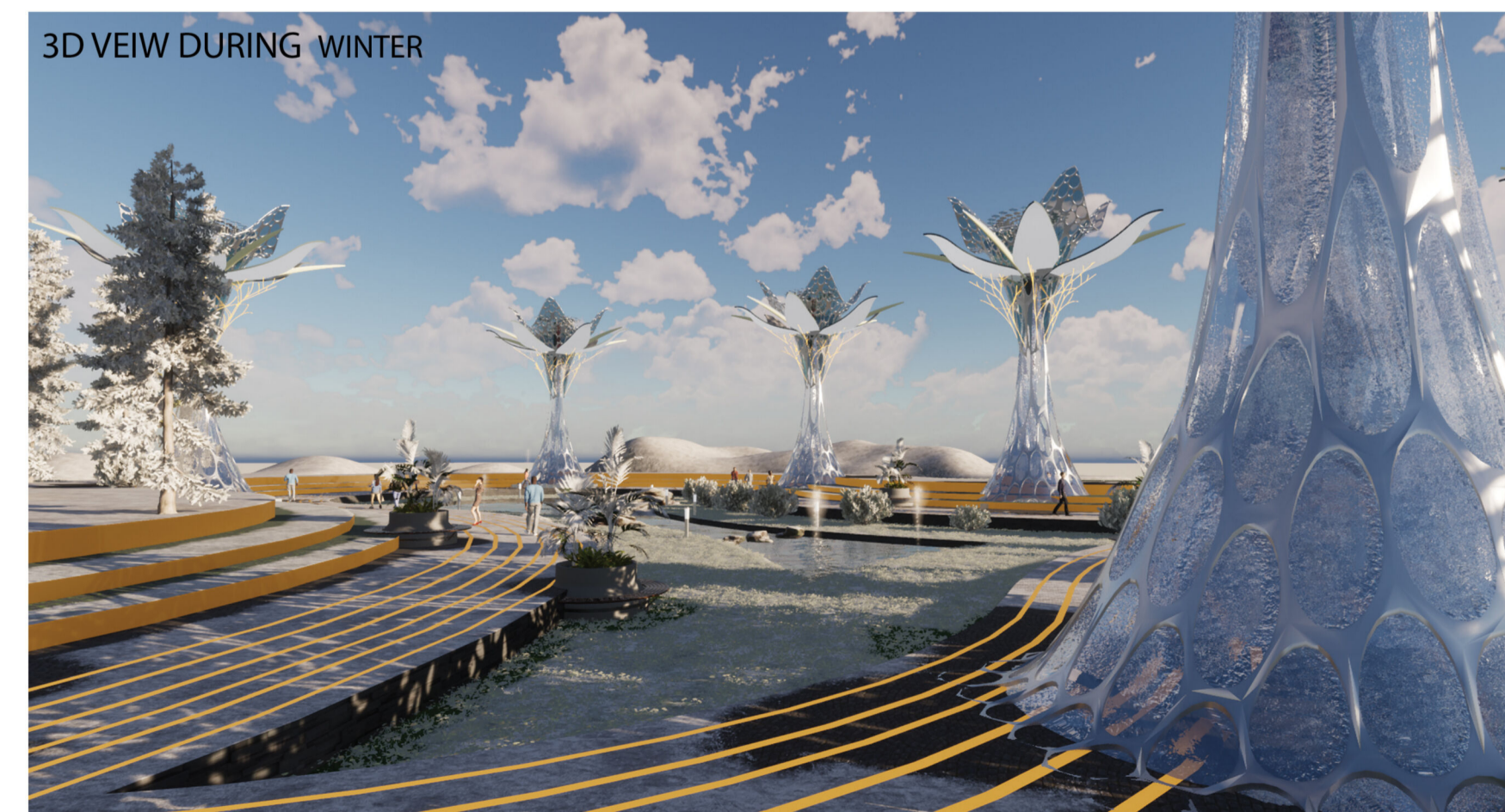


PAVILION

THE PAVILION IS A SPACE CREATED BY COMBINING MULTIPLE STAND-ALONE STRUCTURES. THIS PROVIDES SHADE AND SEATING UNDER IT. IT ALSO ACTS AS GATHERING SPACE FOR PEOPLE AND ACTIVITIES.



NIGHT VIEW

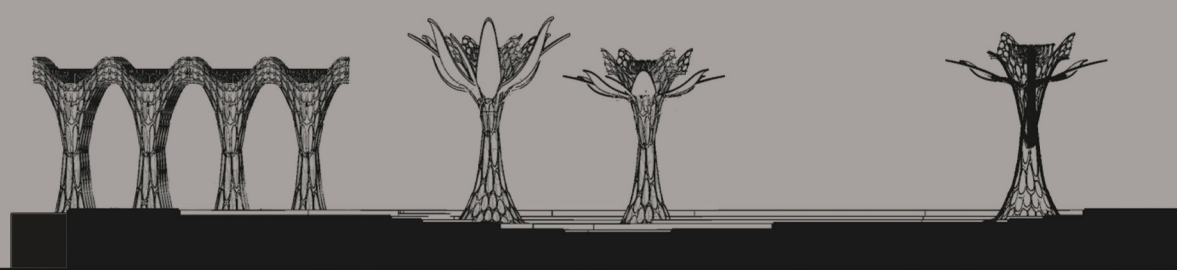


3D VEIW DURING WINTER



3D VEIW DURING SUMMER

THE FORM OF THIS STRUCTURE BEING DERIVED FROM A PLANT NATIVE TO THE SITE IS A WAY FOR IT TO BLEND INTO THE SURROUNDINGS AND REPRESENT THE DIVERSITY OF THE LAND.



SECTIONAL VIEW