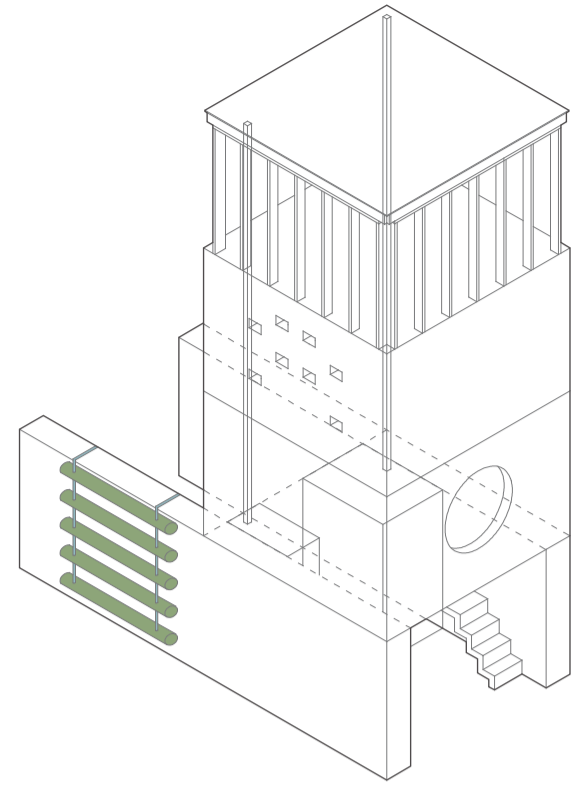
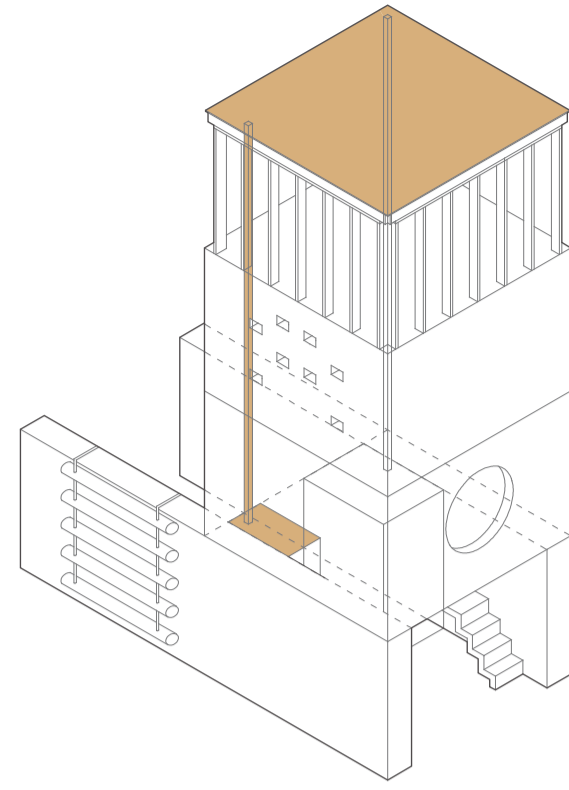


The cabins' configuration is studied in such a way to be able to integrate the shelter function with other possible infrastructural systems. Gabion walls foundations and ground floor can host light hydroponics processes providing food to people on site, while the flat roof is capable of accommodating solar systems for collecting energy and plants for water collection and storage.

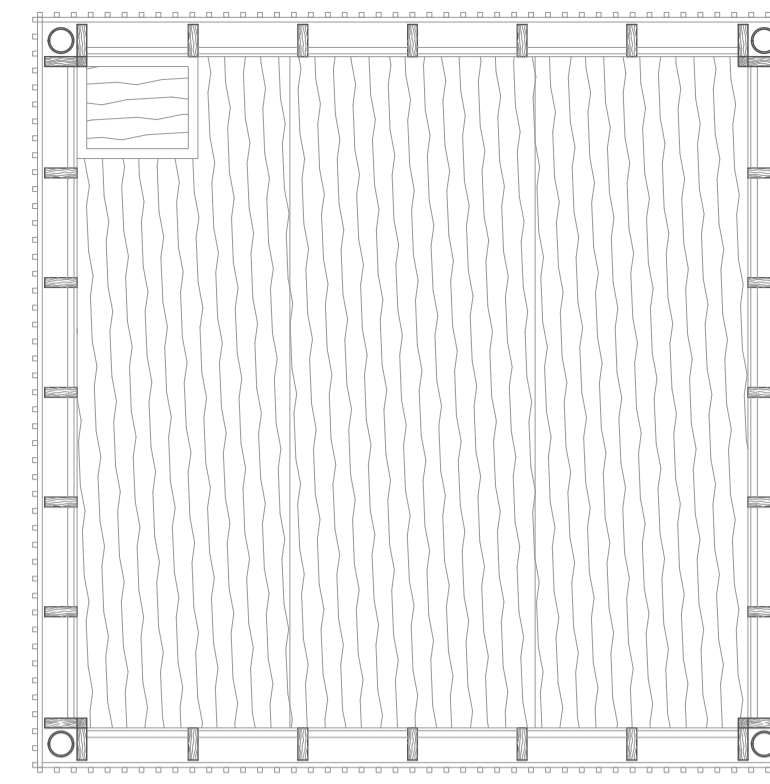
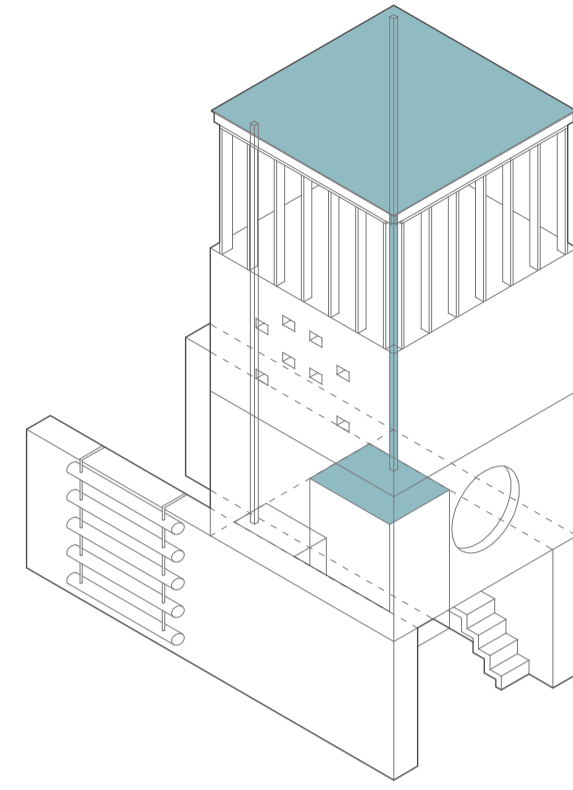
Food system integration



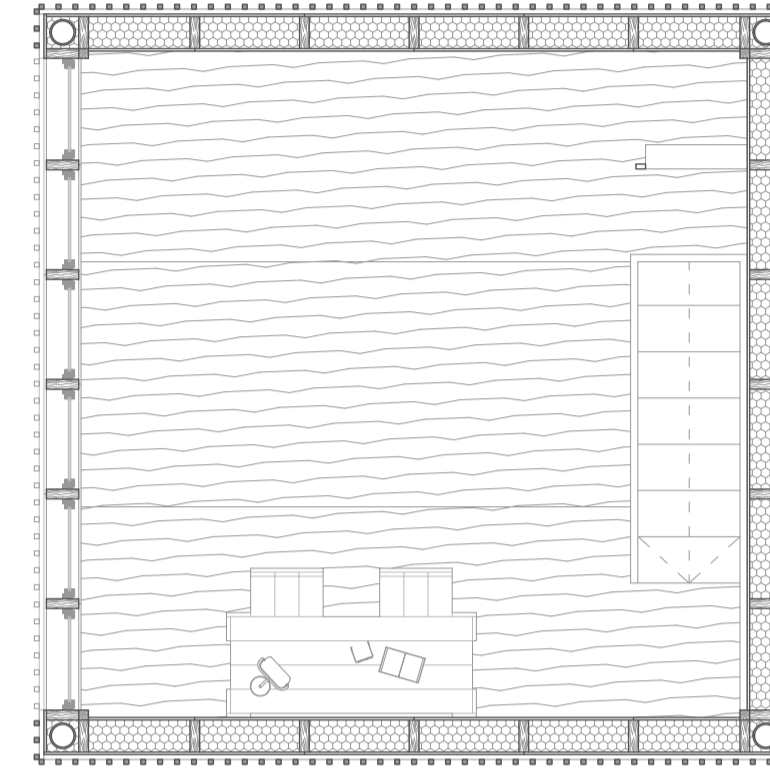
Solar energy collection system integration



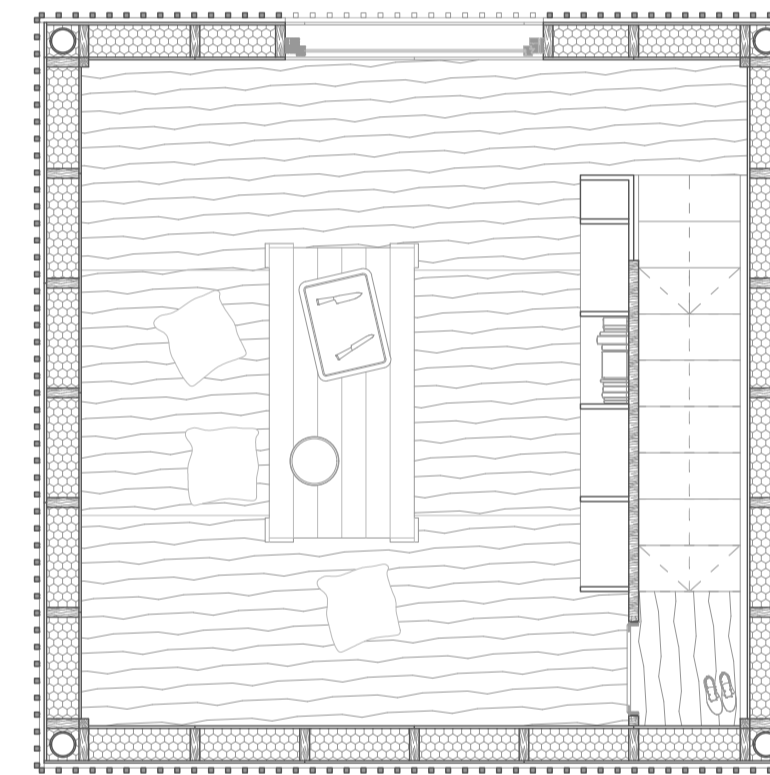
Water collection system integration



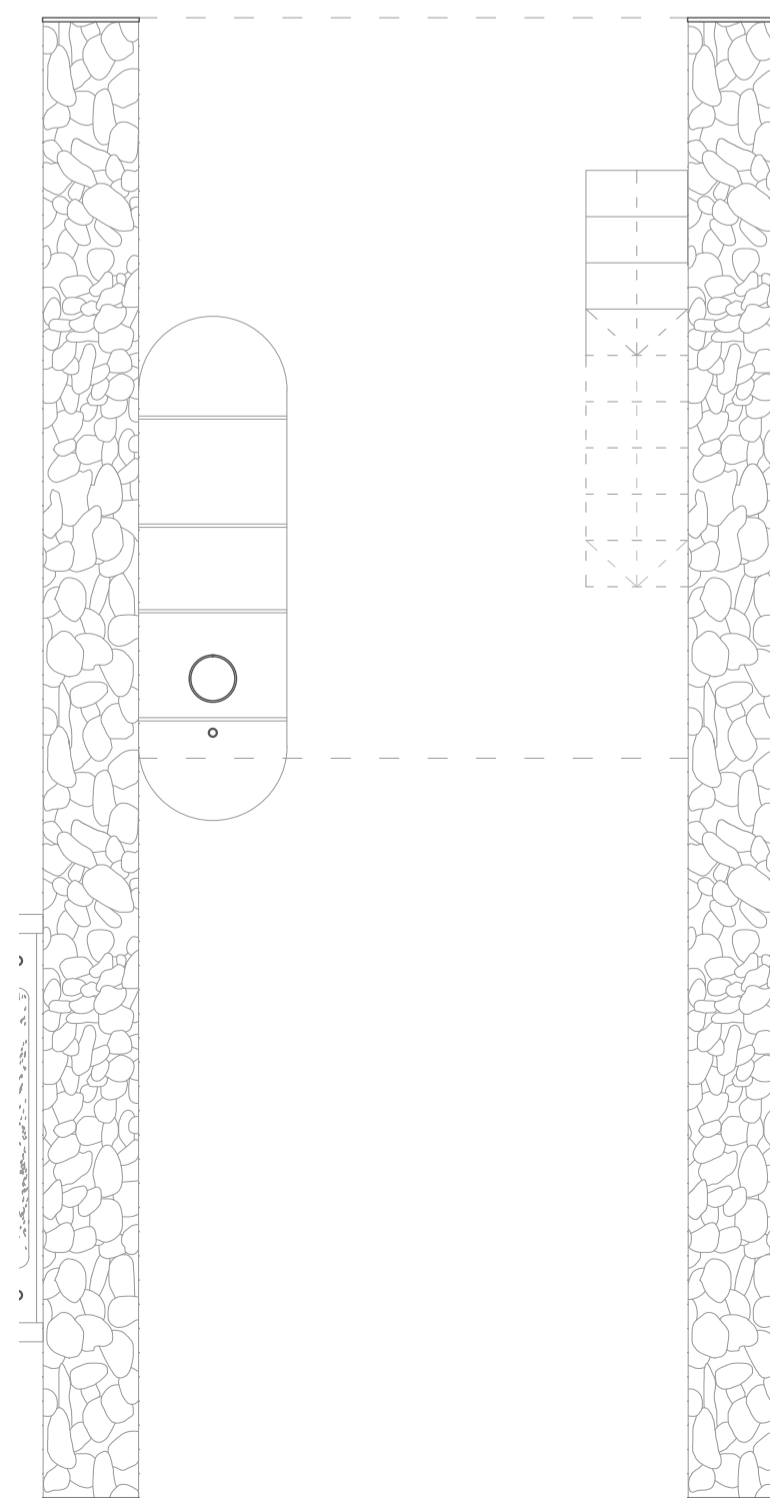
3rd "open" floor, plan



2nd floor, plan



1st floor, plan



Ground floor, plan



Railway opening

Enjoying the scenery while taking a break during a natural walks excursion



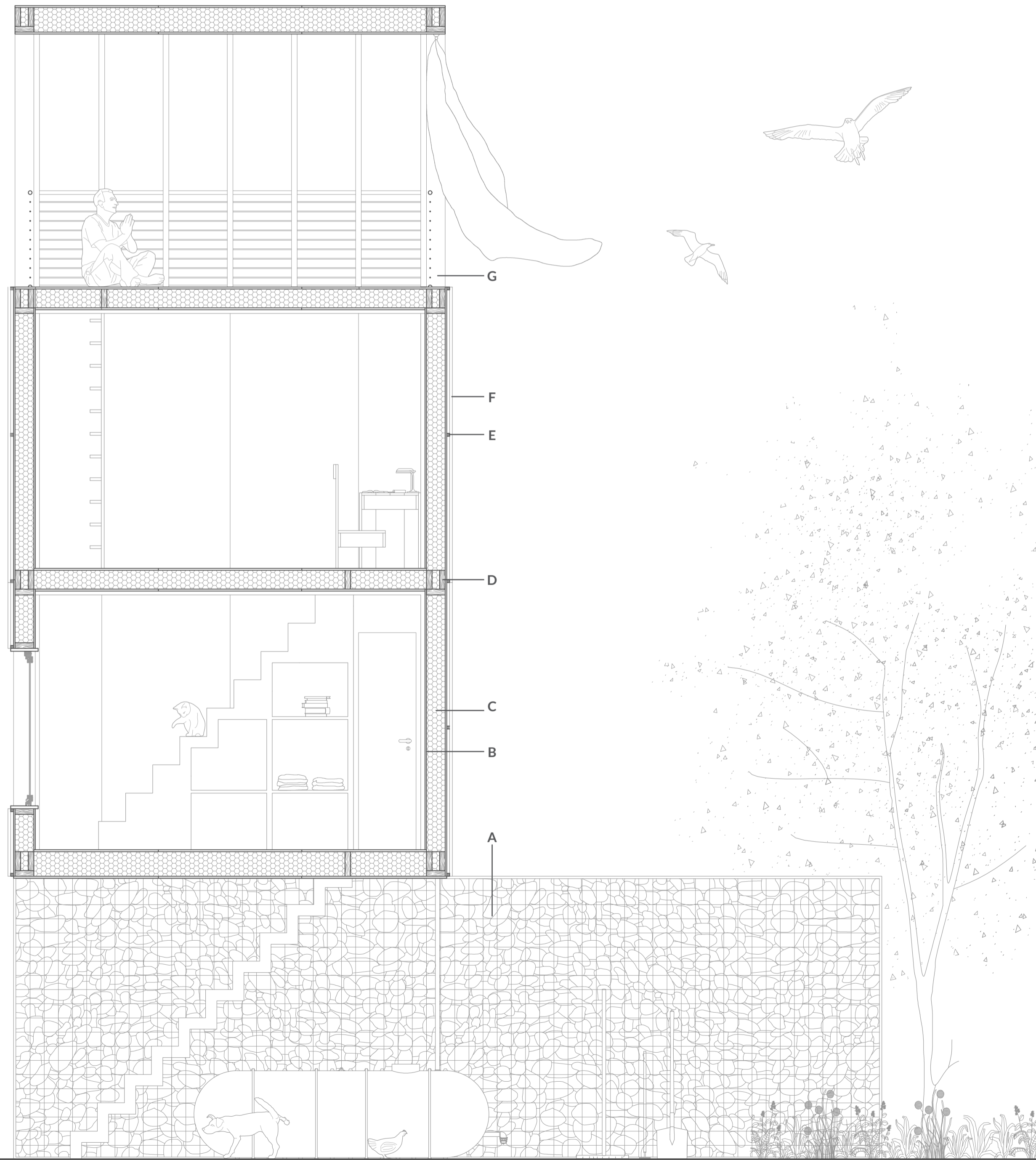
Lens opening

Little moments of relax during temporary residencies experiences



Rollpaper opening

Expressive and meditative opportunities during artistic venues and art installations



0 3m

A - Gabion walls; B - Wood panels; C - Insulation: straw fibers; D - Platform frame, horizontal beams; E - Cladding support structure; F - Cladding: weathered wood lists; G - Platform frame, vertical pillars

