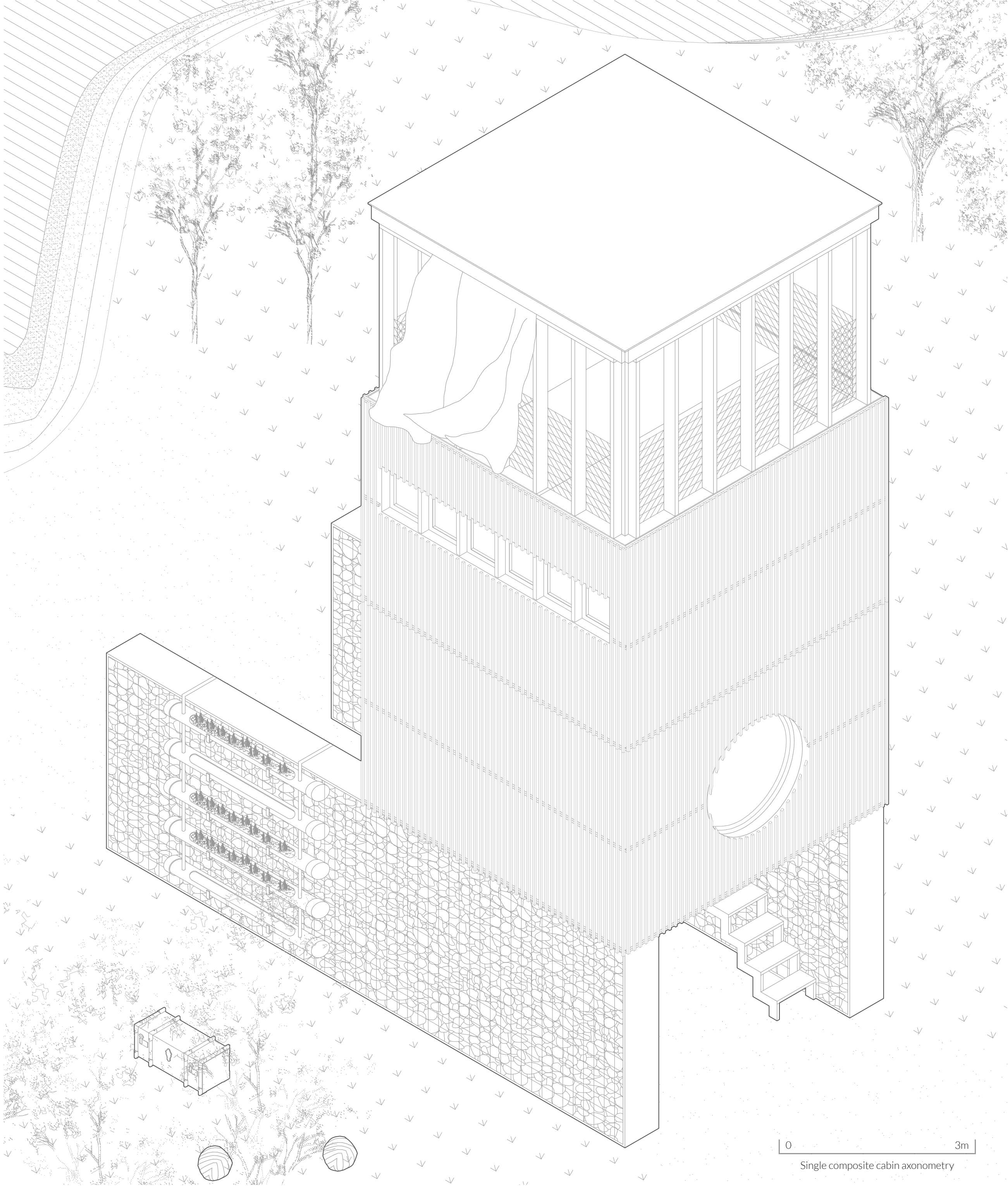
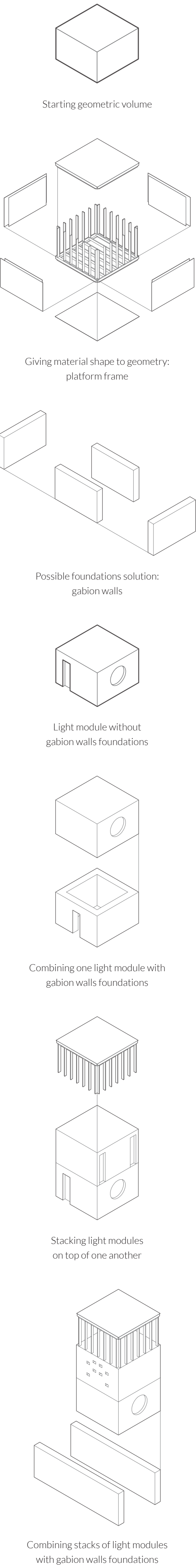
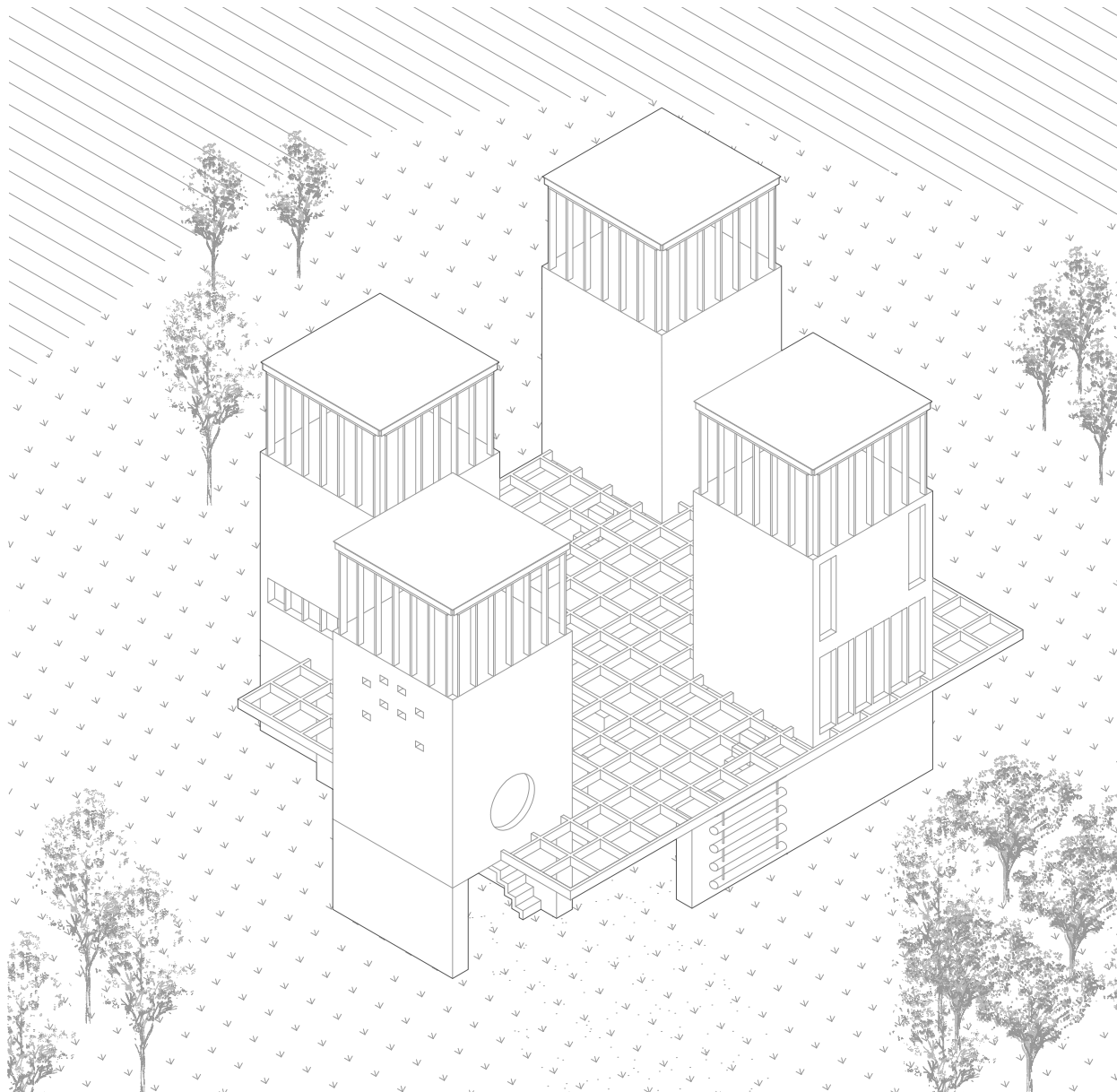


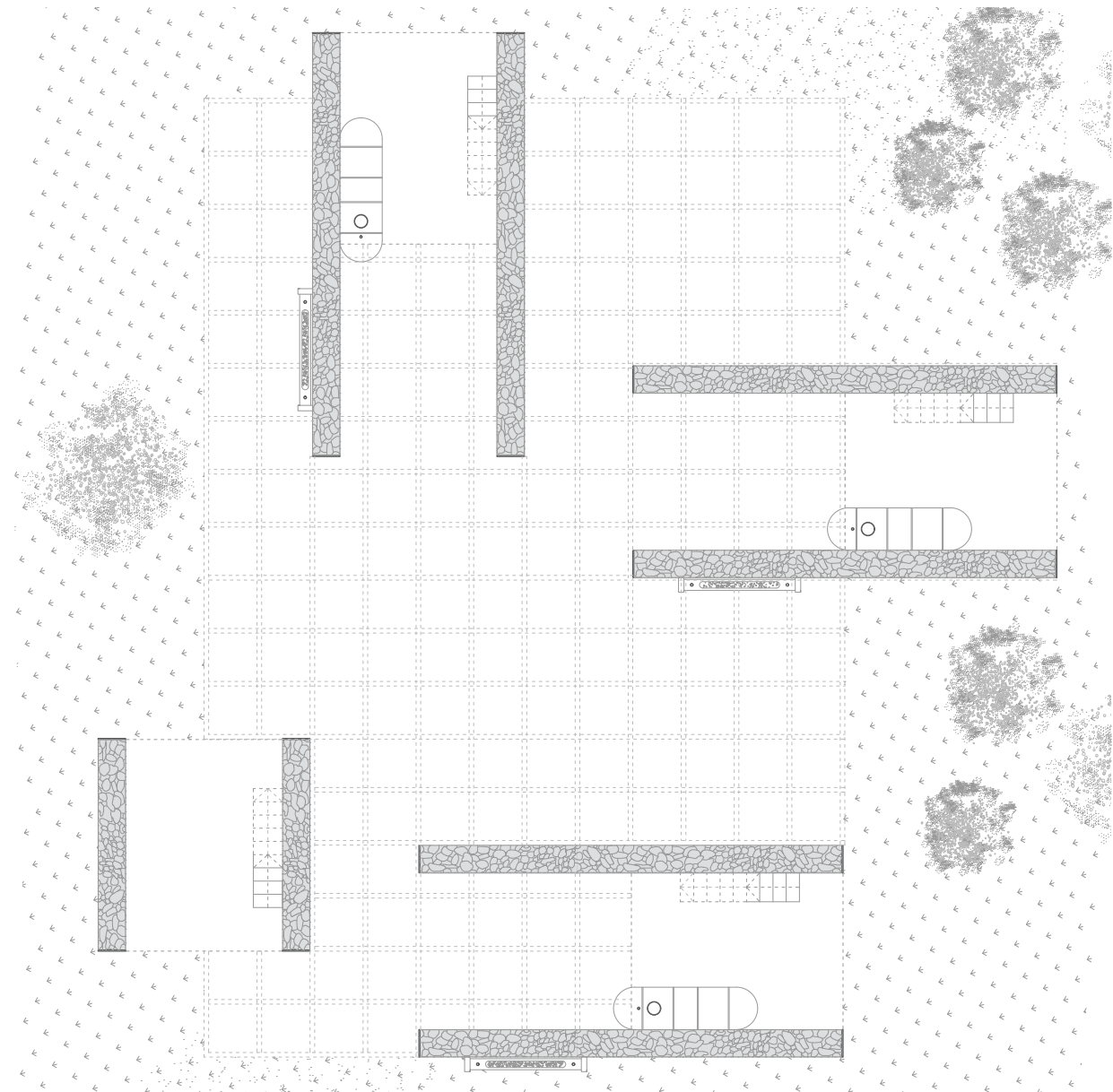
Chart of processes and solutions



Cabins combination: nesting solution (axonometry)



Cabins combination: nesting solution (plan)



Each composite cabin incorporates both light structure (platform frame) volumes and heavy foundations (gabion walls). The latter give shape to a semicovered exterior space shielded from wind and weather, a space that can host open air shelter activities, storage and accommodate tools and structures for all kind of events.

Narrow steps lead upstairs, where the stacked light modules are located: each of them has a different set of openings to frame the scenery for who is inside. Here people can rest, sleep, organize activities or simply enjoy the view in its natural authenticity. This can be done to a whole new level on the last floor, where walls are

just the structural backbone. These single cabins can be combined and nested together to enhance the shelter capacity, giving shape to small clusters that feature an extremely fluid semicovered ground floor that is perfect for hosting specific activities, such as immersive events, self-expression venues, workshops...