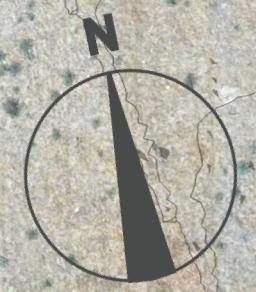




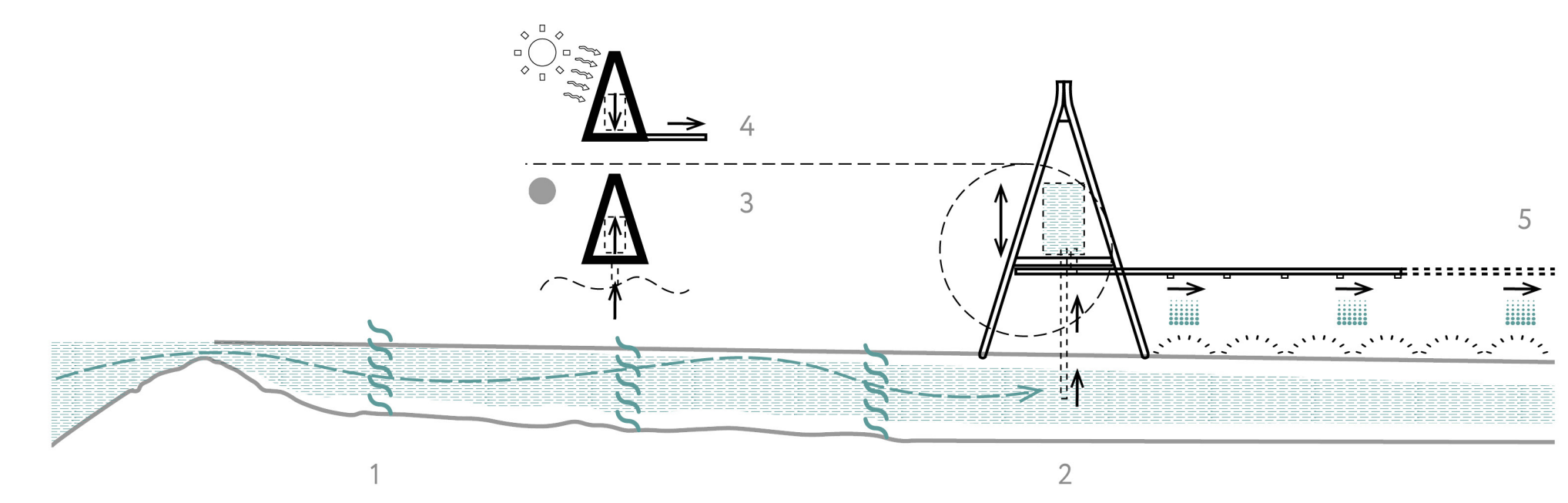
- 1. Middle Reservoir
- 2. Main road
- 3. Natural greenery
- 4. Modular organic farm
- 5. Water ditches (possibly with filters)
- 6. PERPETUAL MOTION Autonomous watering installation
- 7. Existing structure



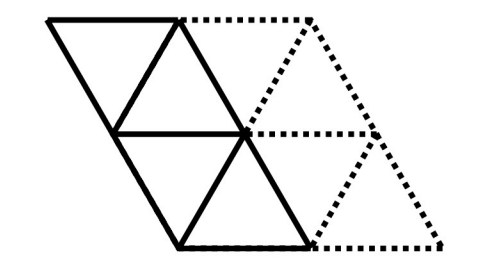
SITE PLAN

WORK PRINCIPLE

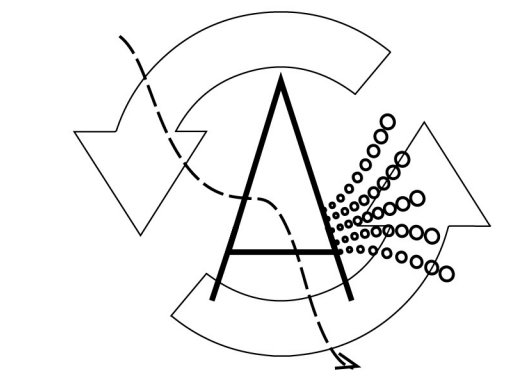
- 1 - compact water ditch from the reservoir with possible filters
- 2 - irrigation 'heat pump' over the ditch
- 3 - at night, the inner pressure changes due to temperature fall, and the water tank inside is filled
- 4 - at day, the sun heats the black metal surface, changing the inner pressure and letting water flow
- 5 - water is distributed through the hovering pipes for compact irrigation



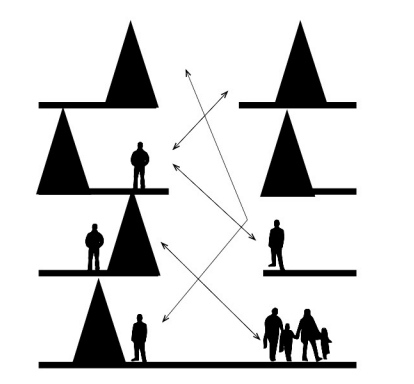
ENVIRONMENTAL BENEFITS



MODULAR & STABLE
simple durable structure for potential expansion

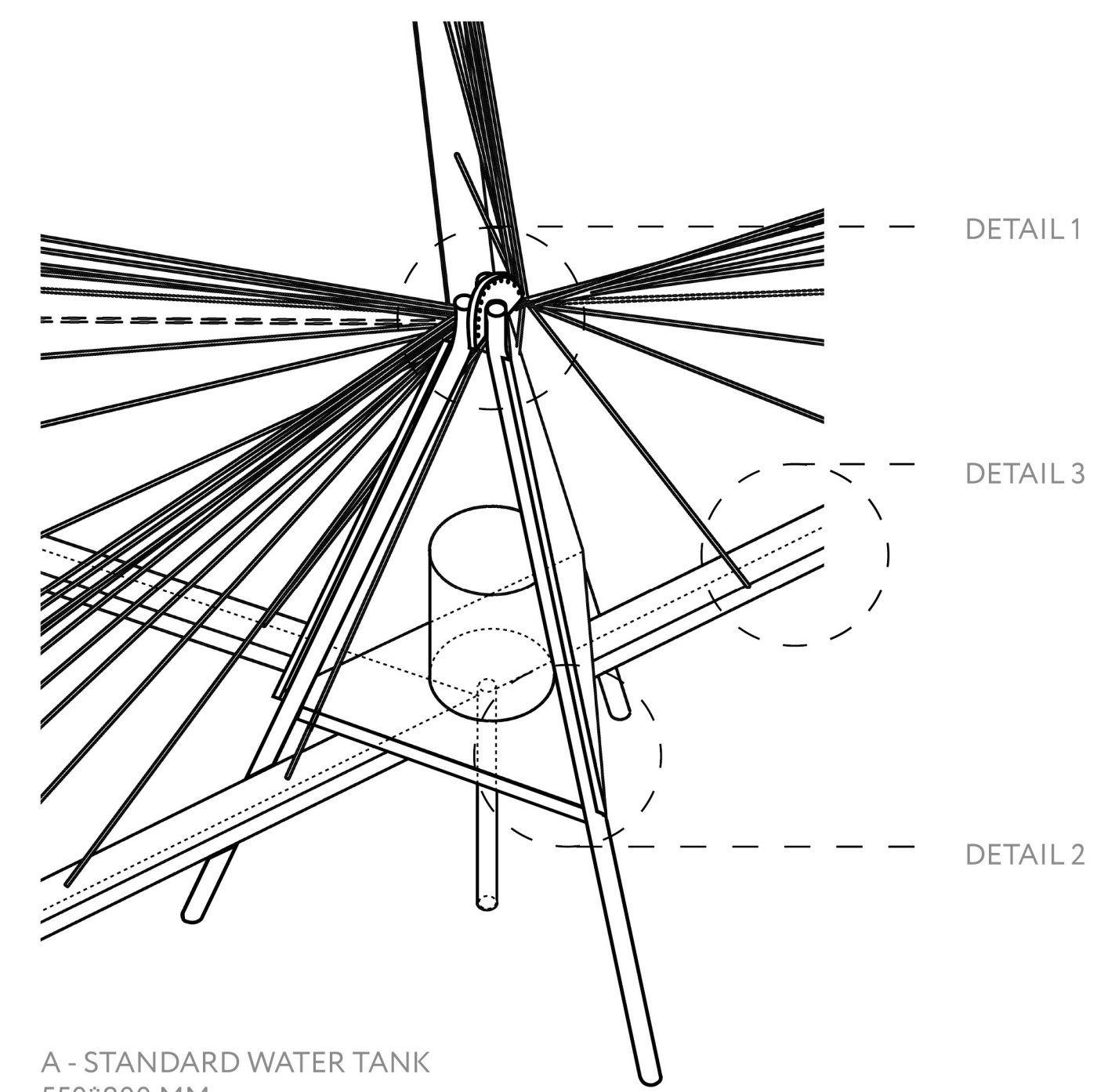
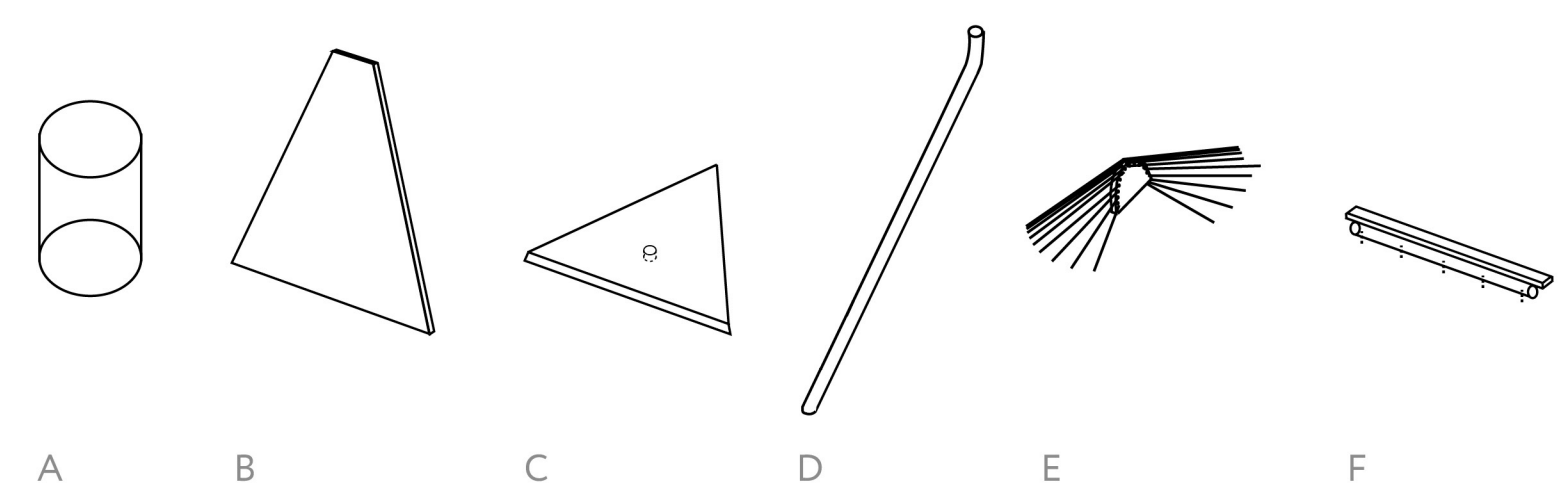


AUTONOMOUS & NON-INVASIVE
sustainable irrigation for the potential organic farm

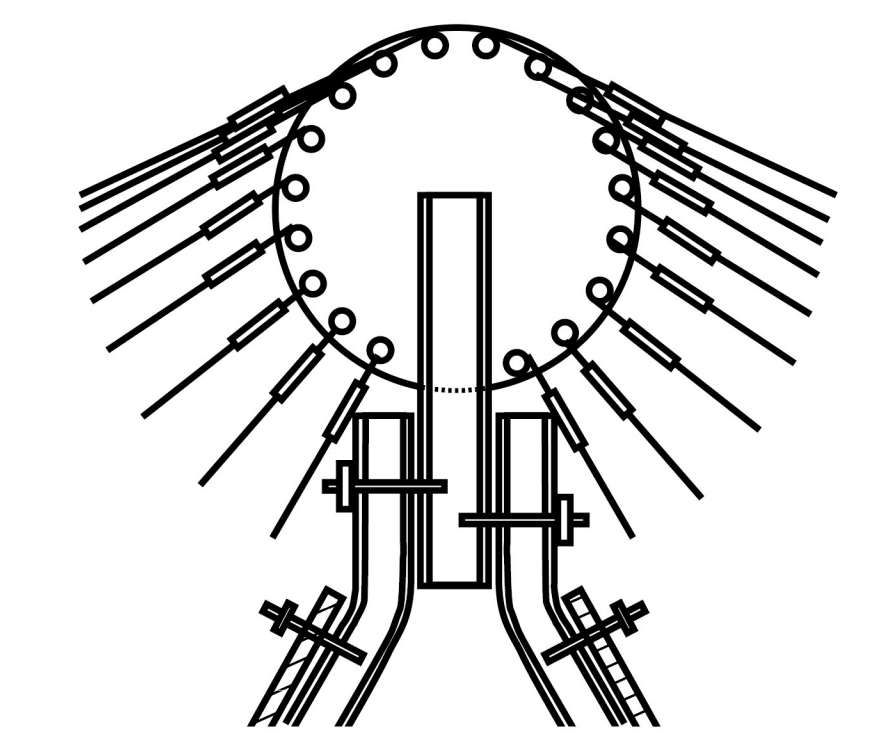


MYSTERIOUS & SYMBOLIC
thought-provoking tourist attraction

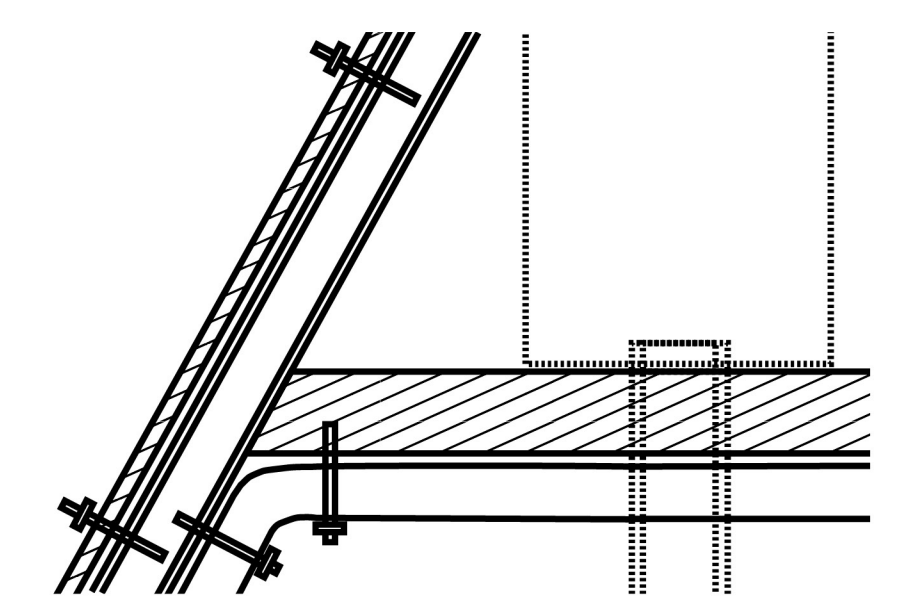
CONSTRUCTION



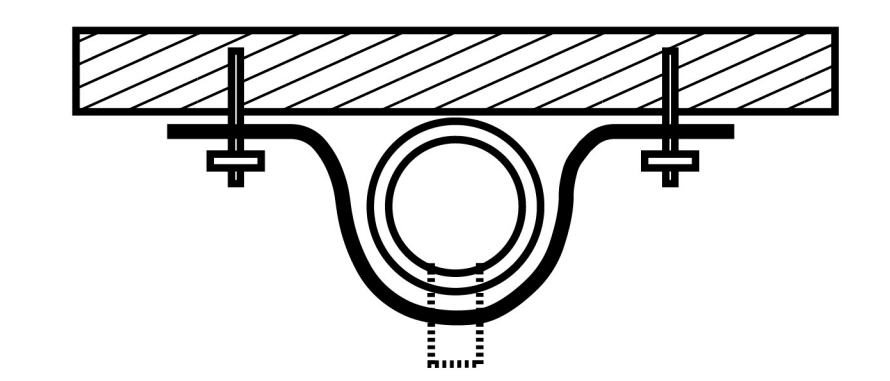
- A - STANDARD WATER TANK 550*800 MM
- B - BLACK-PAINTED CUT METAL SHEET
- C - TIMBER BASE
- D - STRUCTURAL METAL PIPES
- E - STAY CABLE ANCHOR
- F - SUPPORT BEAMS WITH IRRIGATION PIPES



DETAIL 1



DETAIL 2



DETAIL 3