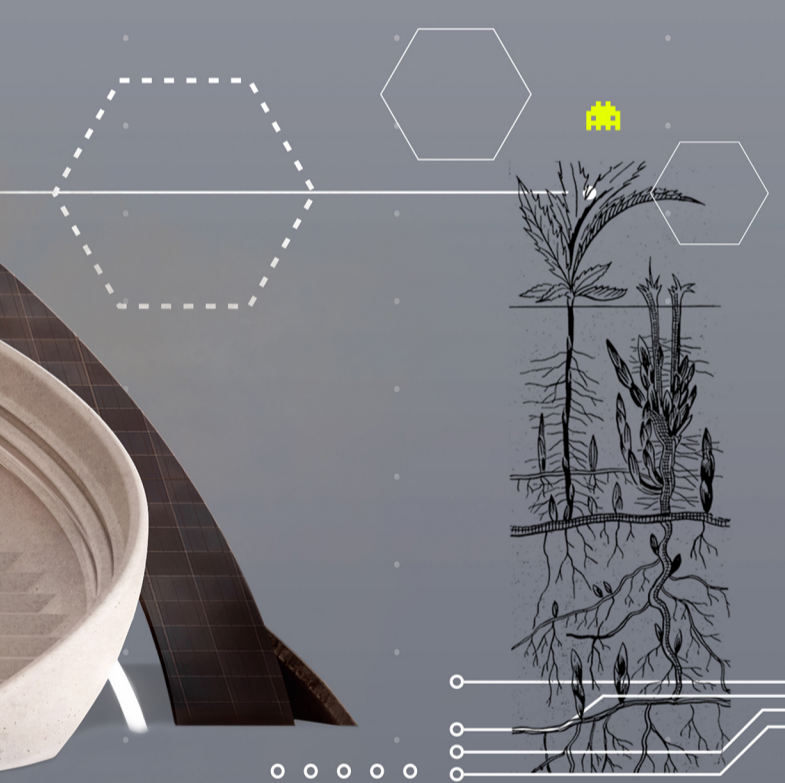


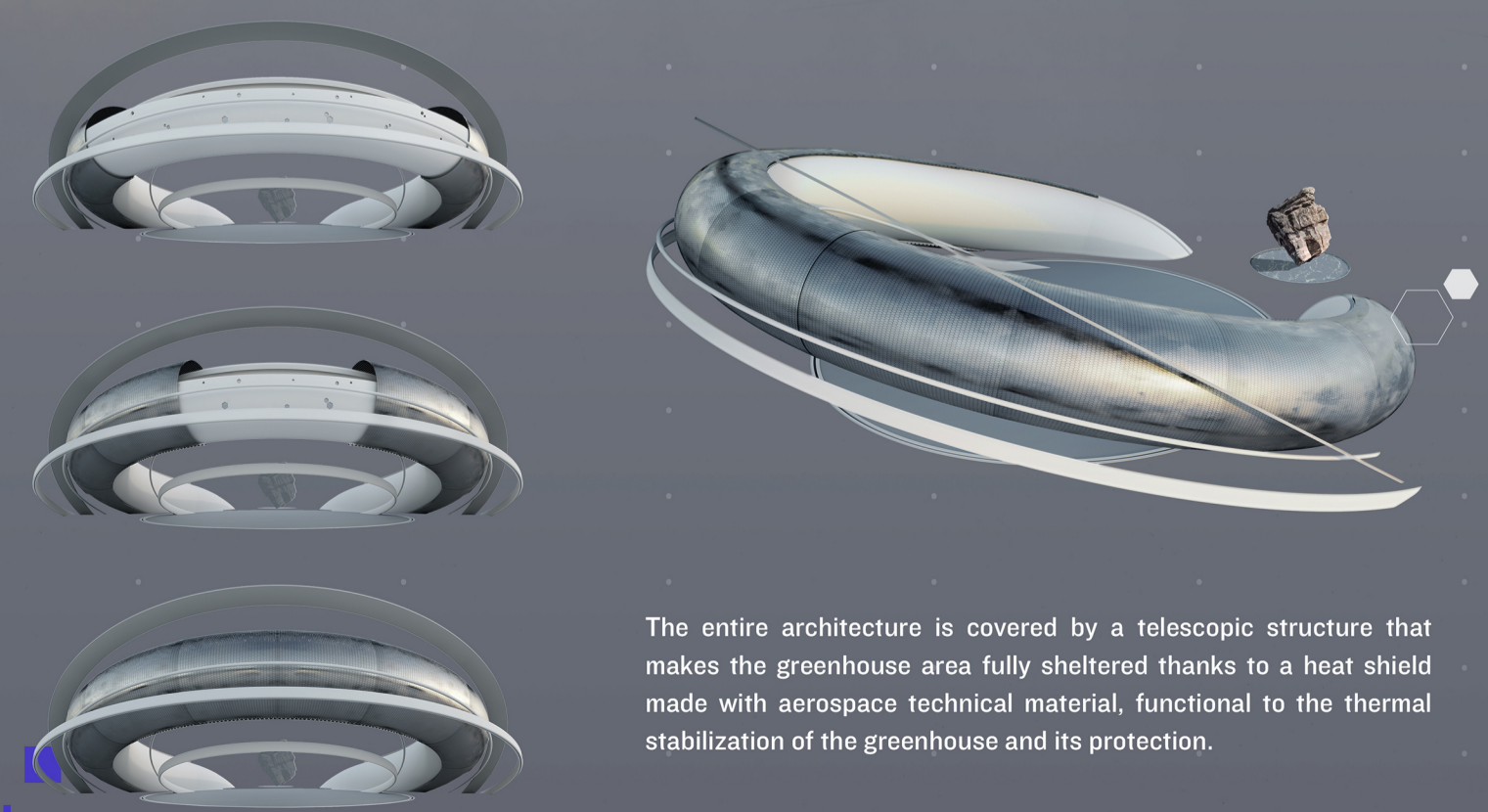
> The Arduino Approach

POOHA has a beautiful shape but it also has a beautiful mind. And we think, technologically speaking, it is far more important to point at a better efficiency of the existing systems rather than looking for something unstable, experimental, that doesn't let us feel safe. **POOHA is a 'Plug & Play' dynamic element in nature.** POOHA is composed of a fixed body, made up of HALO (greenhouse), WATER TANK, SOLAR GROUND PANEL & STONE and elements which can be plugged in or varied in order to make POOHA suitable to any type of environment. Following the concept of ARDUINO, the fixed body functions as a motherboard efficient in controlling additional elements, called RINGS.

The RINGS allow the POOHA to be suitable for very different environments. In terms of Energy, POOHA takes half of the energy needed for its sustainability from the sun, and the other half using a natural energy source that belongs to the 'hosting-ecosystem'.



> The Shield



The entire architecture is covered by a telescopic structure that makes the greenhouse area fully sheltered thanks to a heat shield made with aerospace technical material, functional to the thermal stabilization of the greenhouse and its protection.

