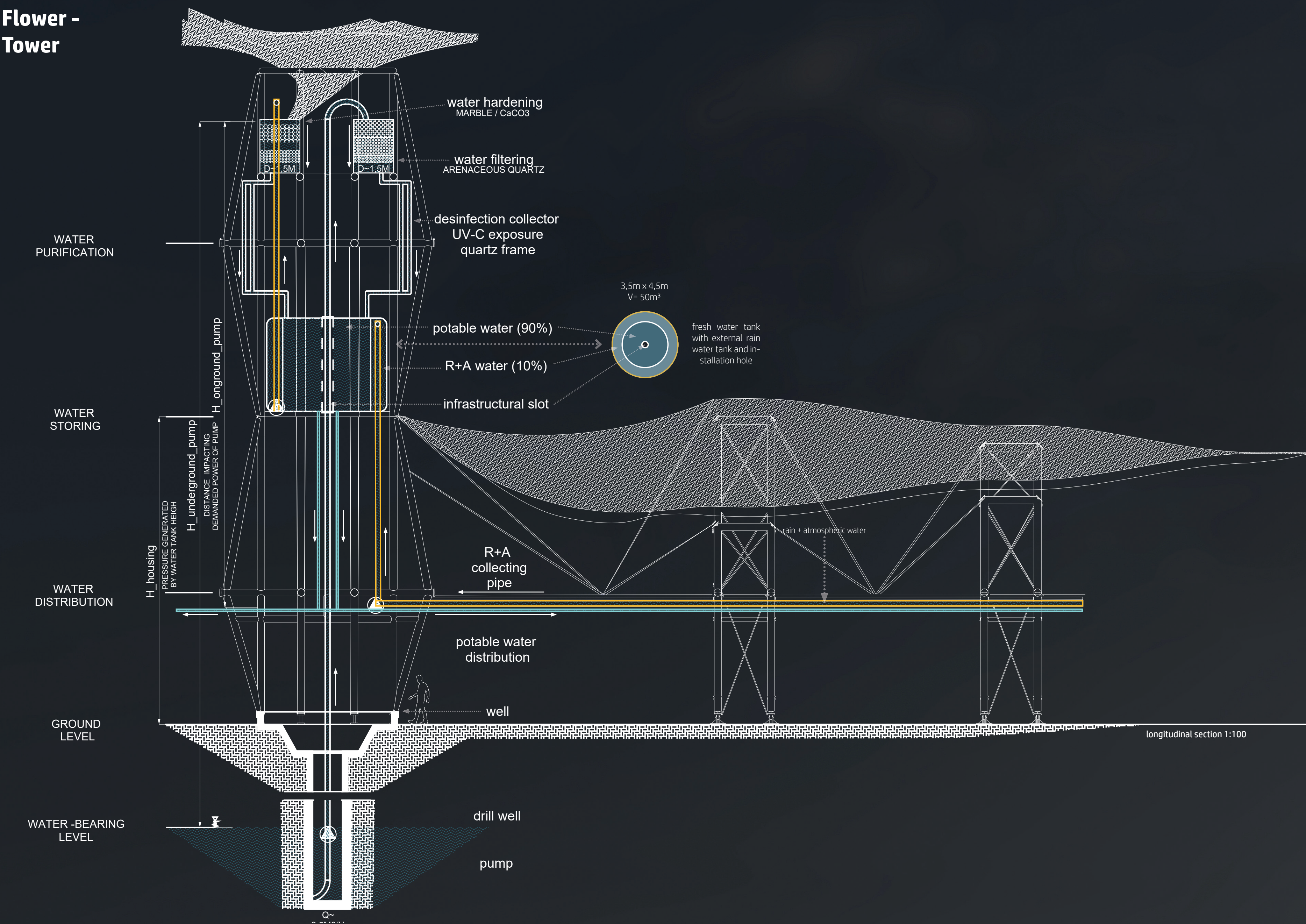


Water-  
Flower -  
Tower



GENERATED OUTPUT

The gain of water with use of atmospheric and rainwater collecting systems is based on surface generation. The proposed prototype of the Aqueduct structure is 330m-long. This span stands for over 1650m<sup>2</sup> of membrane and over 3100m<sup>2</sup> of fog harvesting surface. Collected rainwater is estimated as 300,000l annually while daily earn of atmospheric water varies from 12 450l to 31 125l.

Their output is linked with the weather conditions, but considering the analyzed data it is possible to collect 4-10l/ m<sup>2</sup> of atmospheric water with the designed atmospheric water collecting system. In order to meet the assumed demand of 50m<sup>3</sup> designed within Water Flower Tower is a drilled well which provides from 19-38 m<sup>3</sup> per day.

Perspective of Water Flower Tower  
- Rabbit view