

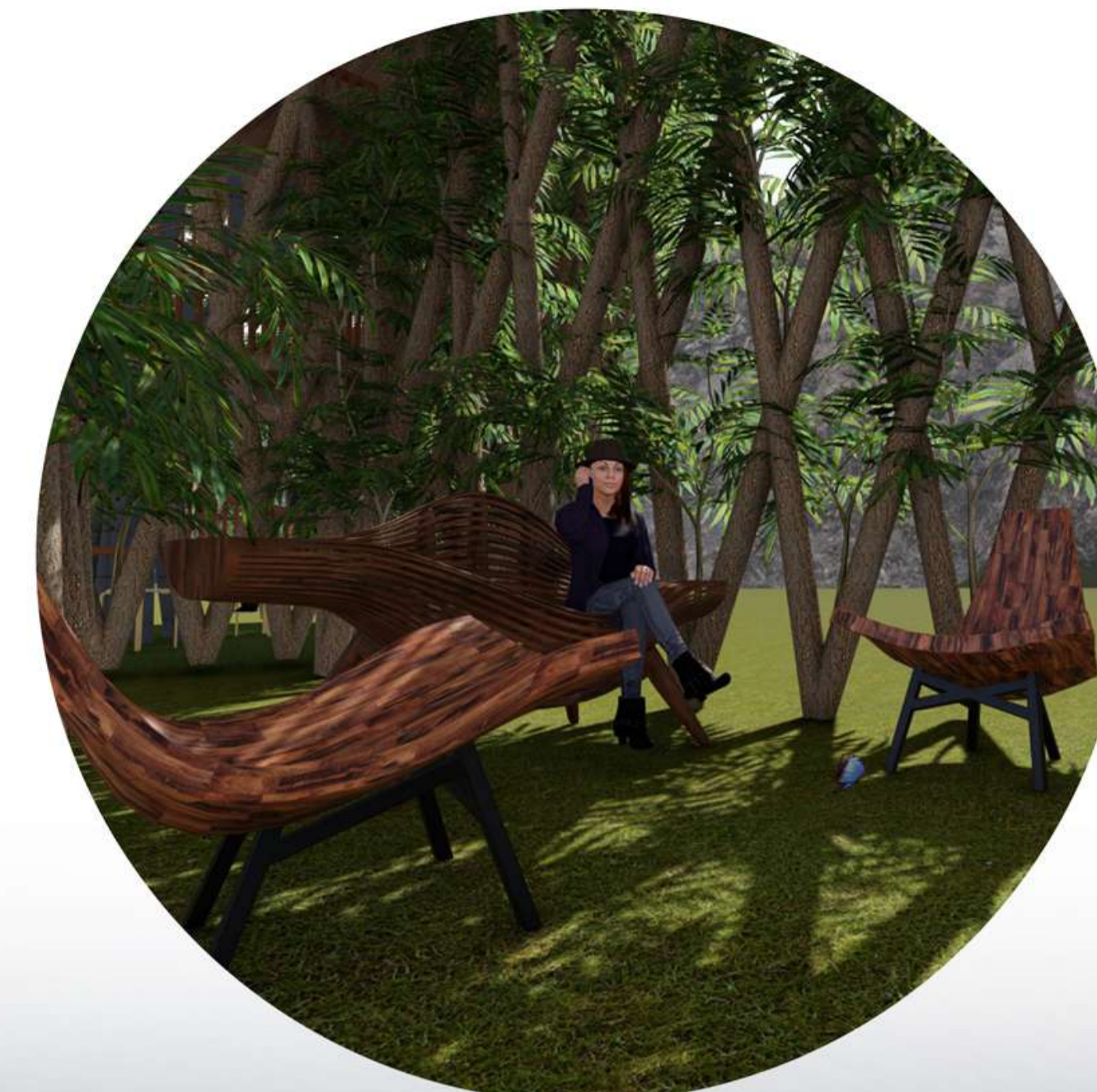
RAMP ENTRY AND SEATING SPACE INSIDE THE MODULE WITH BAUBOTANIK THAT ALSO HAS CREEPER PLANTS LIKE TOMATOES AND GRAPE VINES



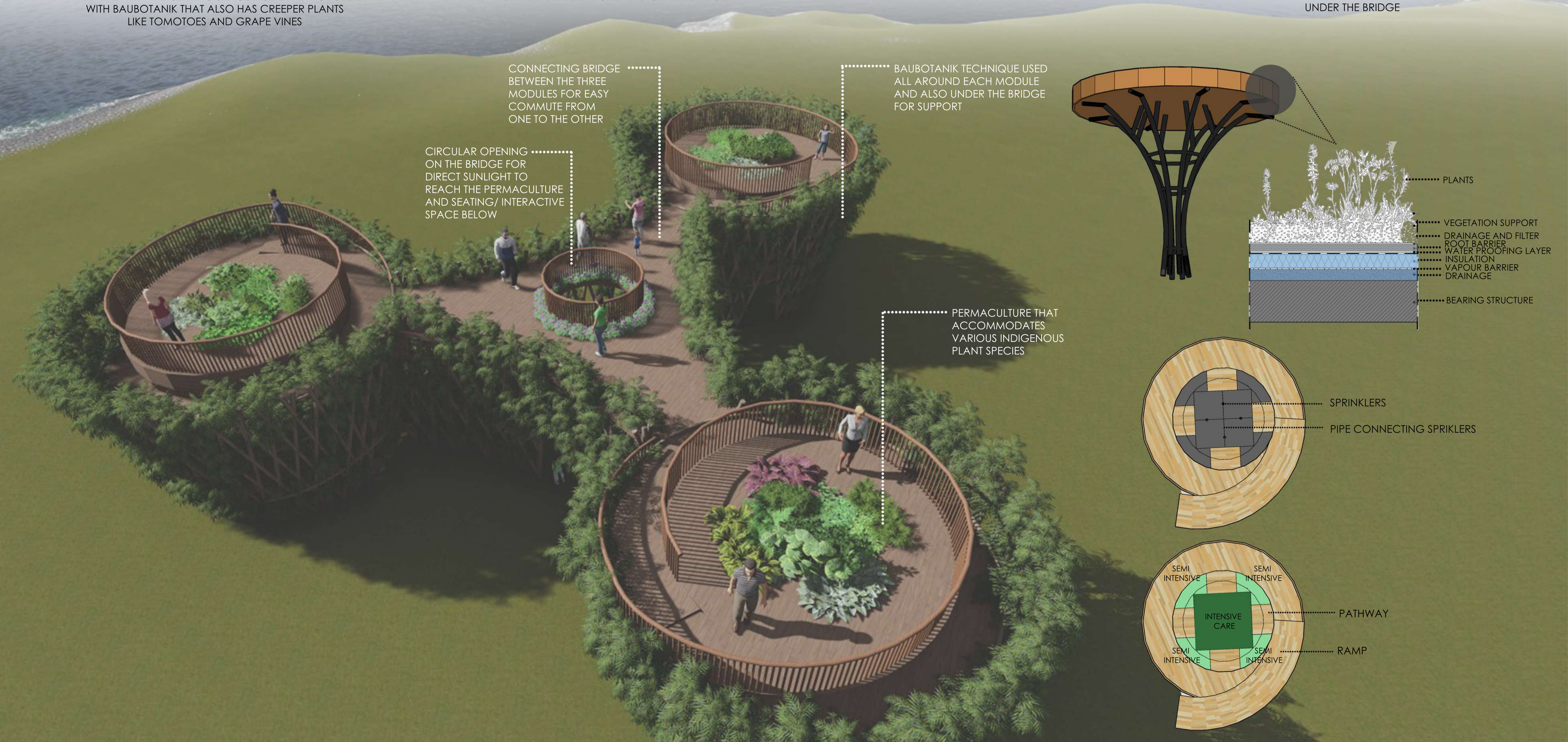
VIEW FOM THE CIRCULAR OPENING ON THE BRIDGE



VIEW OF THE PERMACULTURE UNDER THE BRIDGE



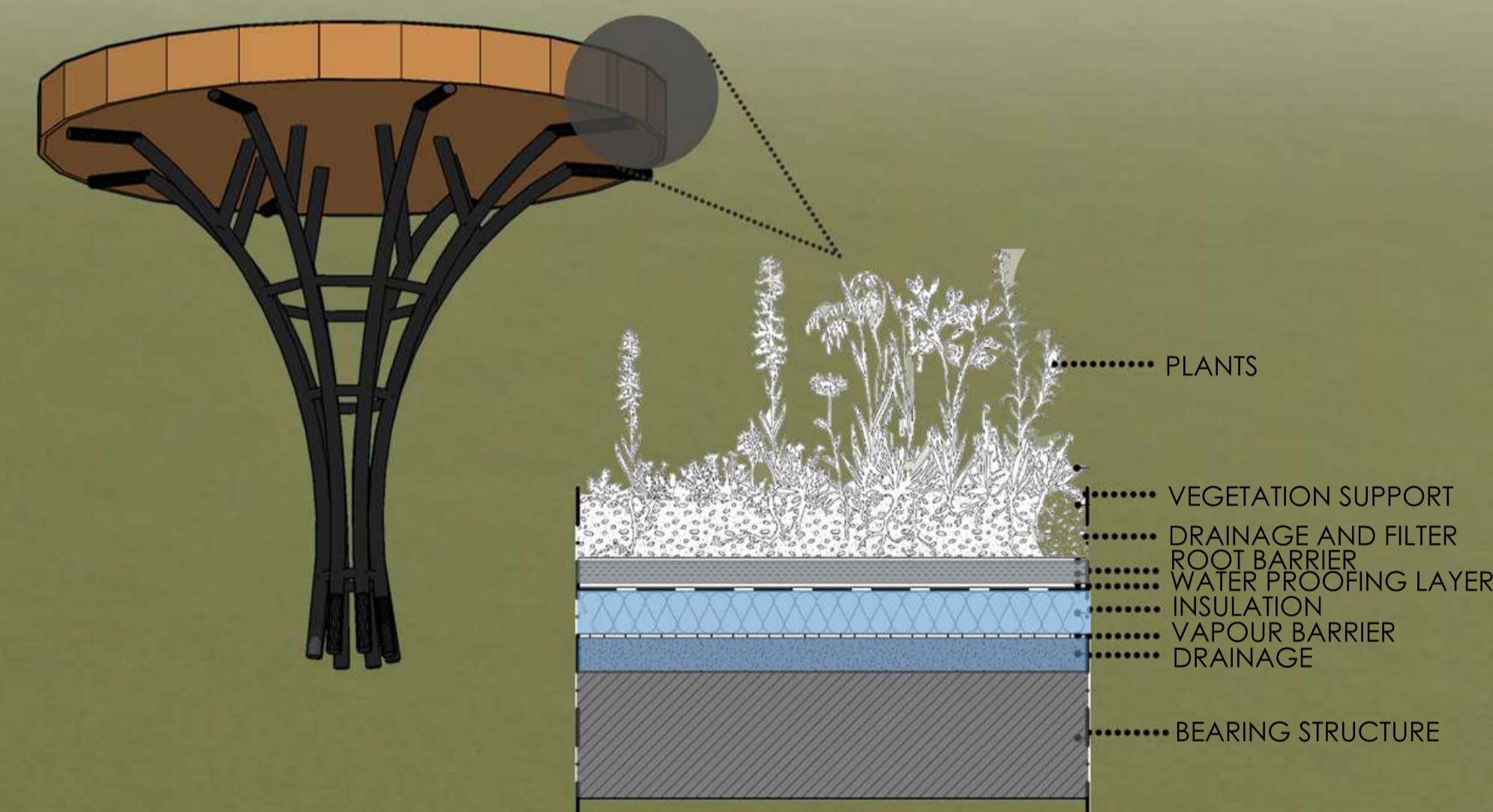
VIEW OF SEATING ARE/INTERACTIVE SPACE UNDER THE BRIDGE



CONNECTING BRIDGE BETWEEN THE THREE MODULES FOR EASY COMMUTE FROM ONE TO THE OTHER

CIRCULAR OPENING ON THE BRIDGE FOR DIRECT SUNLIGHT TO REACH THE PERMACULTURE AND SEATING/ INTERACTIVE SPACE BELOW

BAUBOTANIK TECHNIQUE USED ALL AROUND EACH MODULE AND ALSO UNDER THE BRIDGE FOR SUPPORT



PERMACULTURE THAT ACCOMMODATES VARIOUS INDIGENOUS PLANT SPECIES

