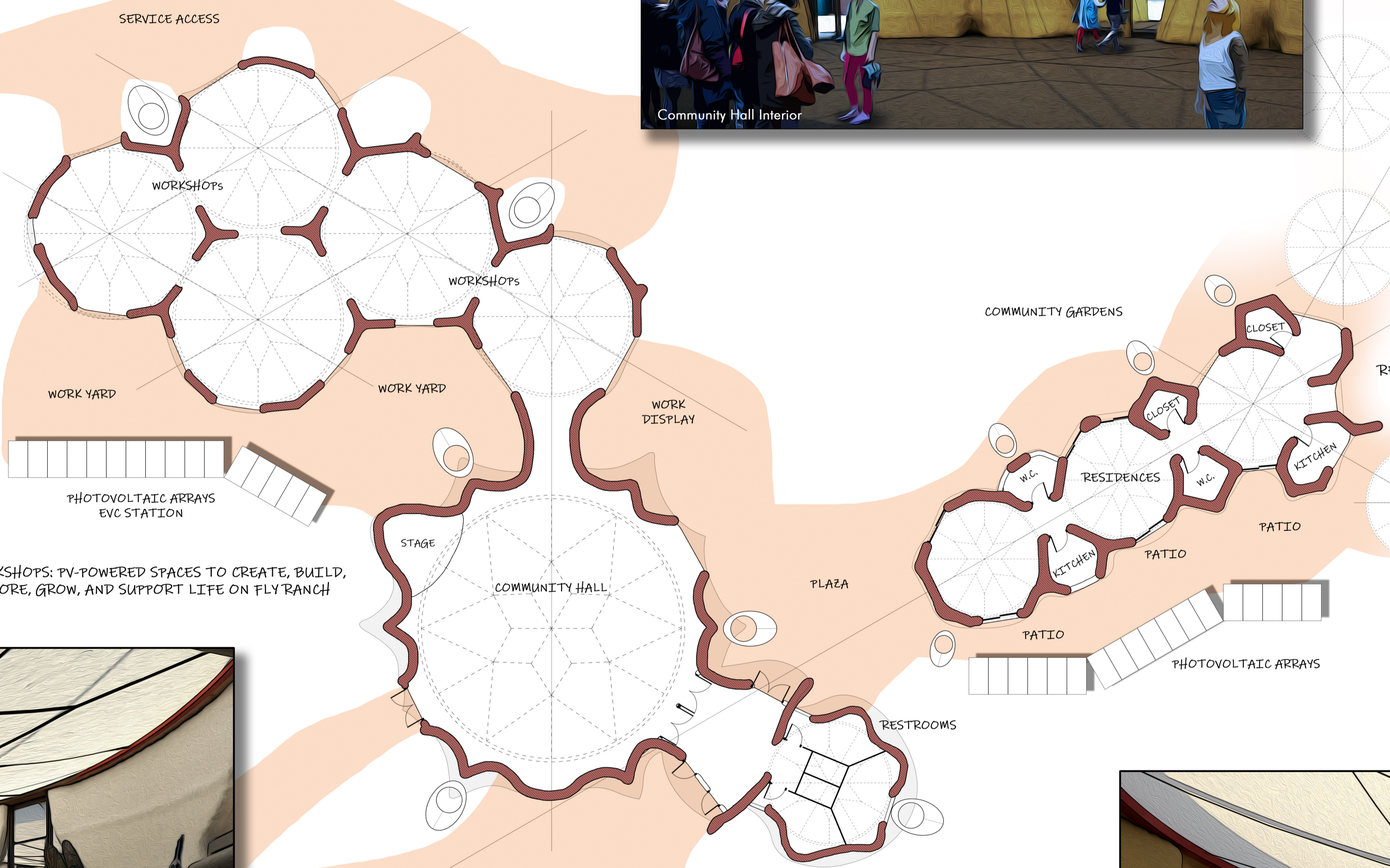


**SITE PLAN**  
 40°49'59.83"N, 119°19'57.54"W  
 0 5 10  
**SCALE METERS**

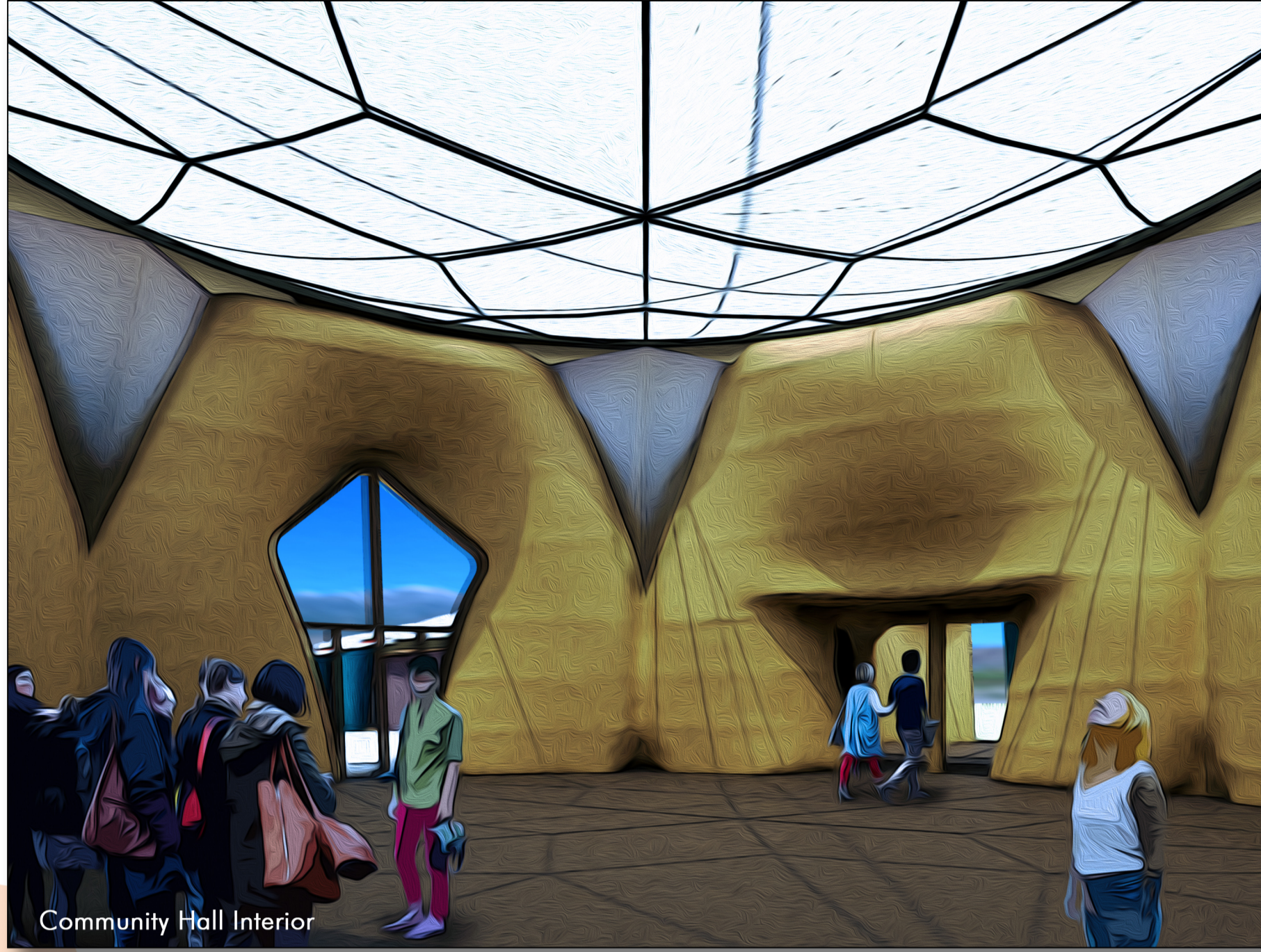


WORKSHOPS: PV-POWERED SPACES TO CREATE, BUILD, STORE, GROW, AND SUPPORT LIFE ON FLYRANCH

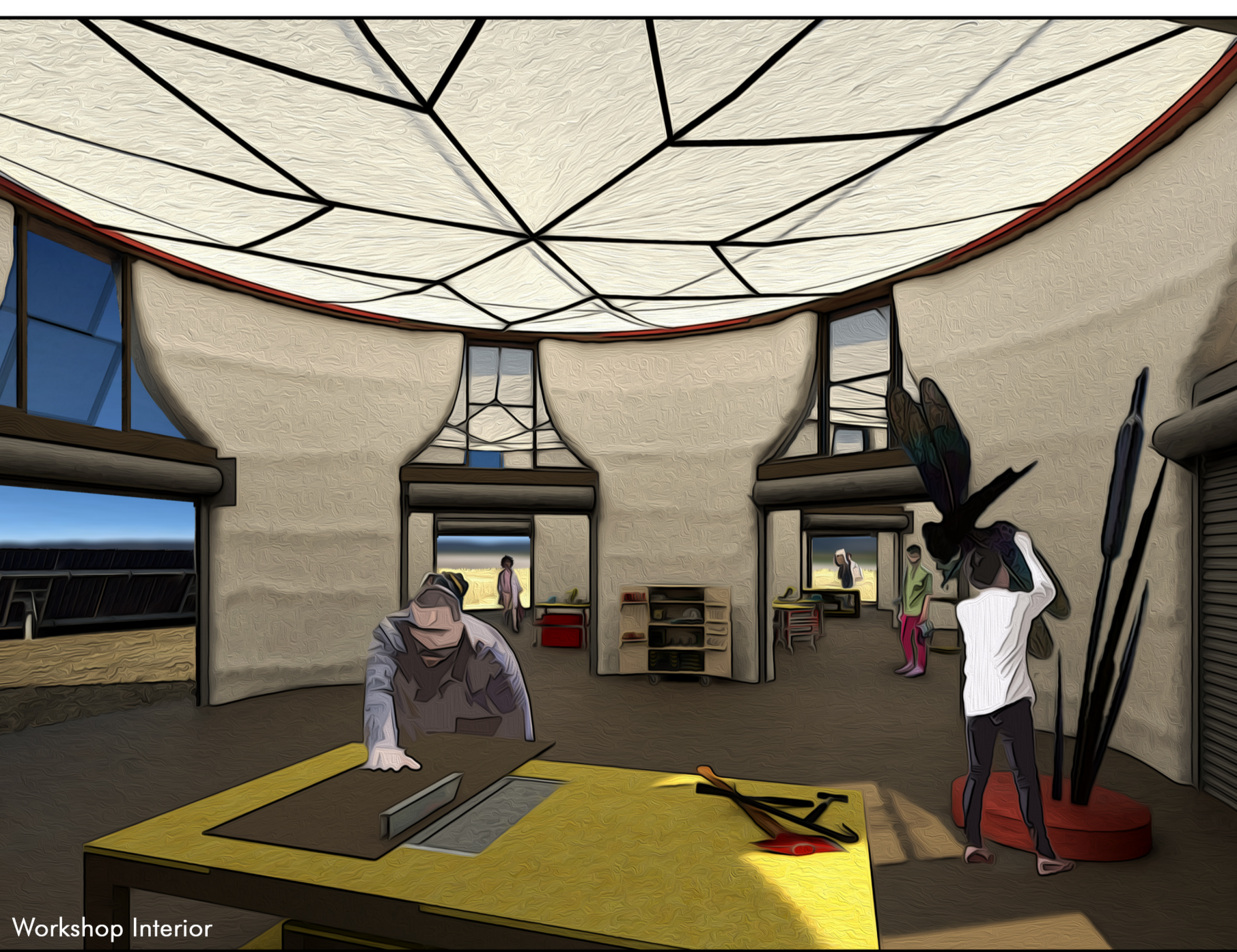
COMMUNITY HALL: A TEMPERATE CONVENING SPACE FOR YEAR-ROUND EVENTS AND CEREMONY

RESIDENCE: MODULARITY ALLOWS FOR SINGLE OR DOUBLE ROOM EFFICIENCY DWELLINGS

FUTURE EXPANSION



Community Hall Interior



Workshop Interior



Residence Interior