

“People walk inside and outside, finding their inner peace with this art piece. The new technology never ends as it inspires human mental world.”

DESIGN ADVANTAGES



0 Waste



Self-sustainable



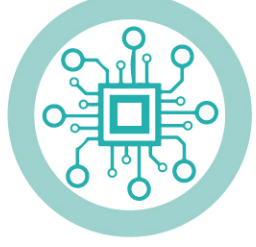
Consistant temprature
year-round



Extremely durable



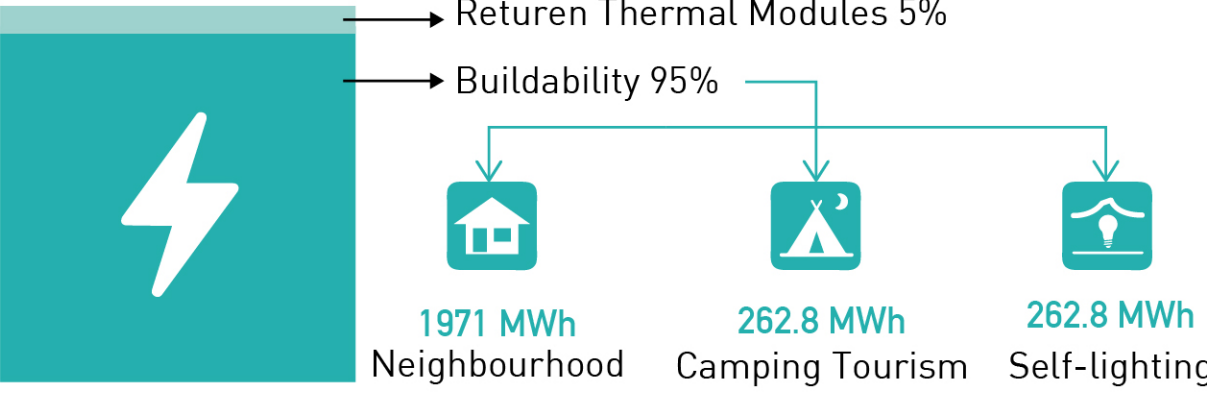
Freedom from fossil fuels



New tech + materials as an ex-
periment in the future geother-
mal marketings

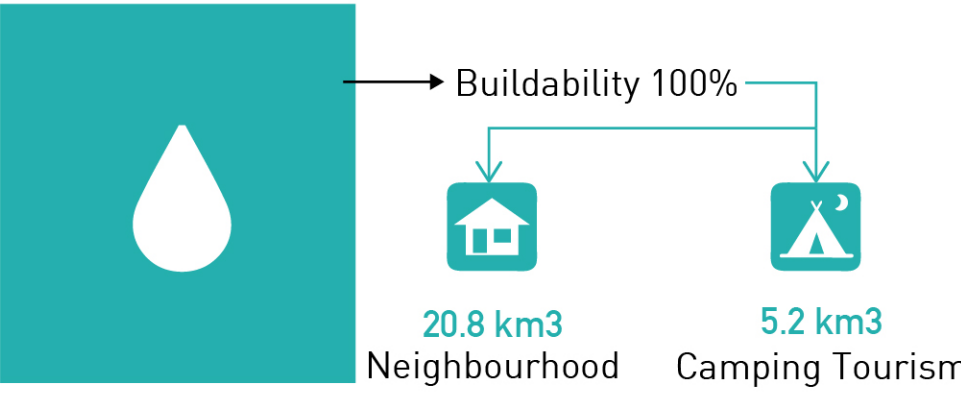
ELECTRICITY PRODUCTION

**2628
MWh**
Annual Power Generated



Potable Water

**26
km³**
Annual Quantity Generated



BUILDABILITY

