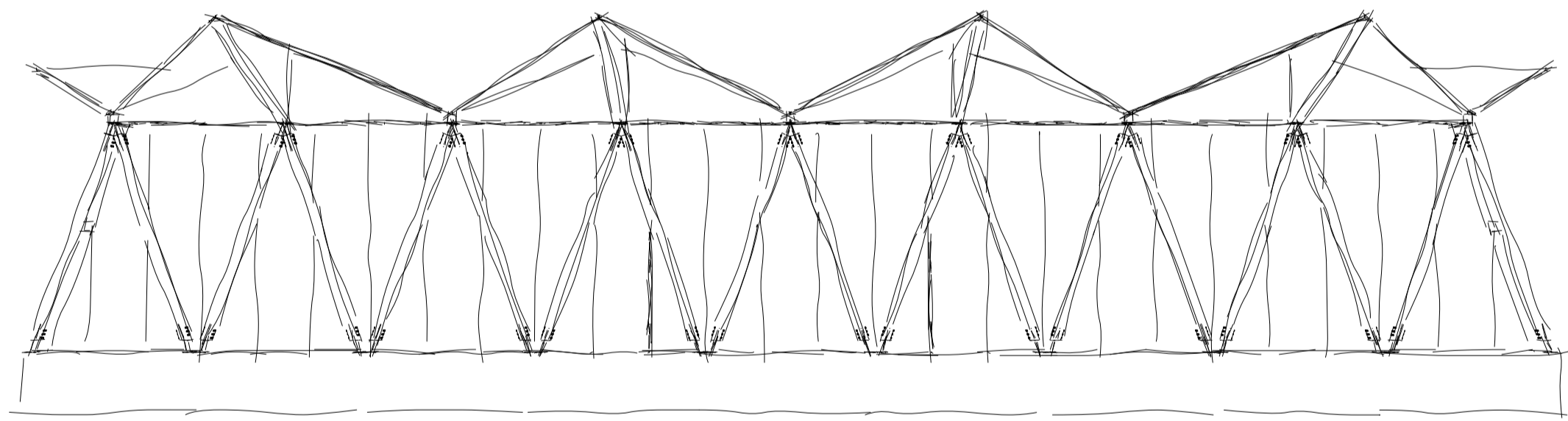
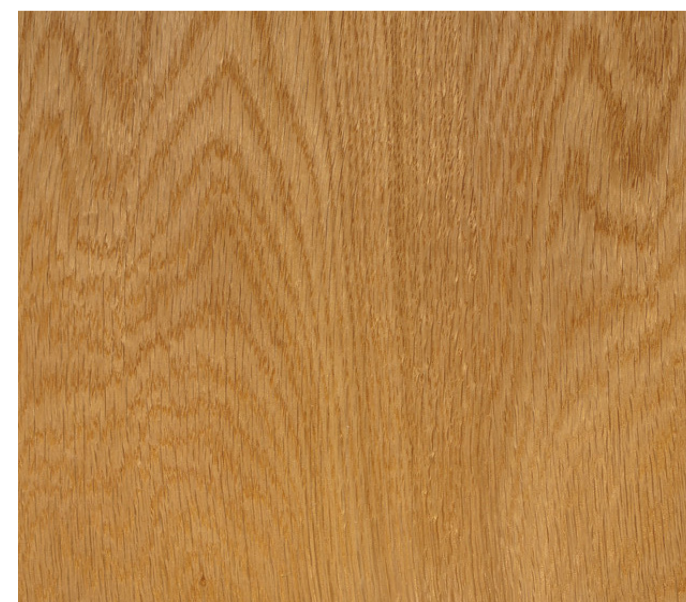




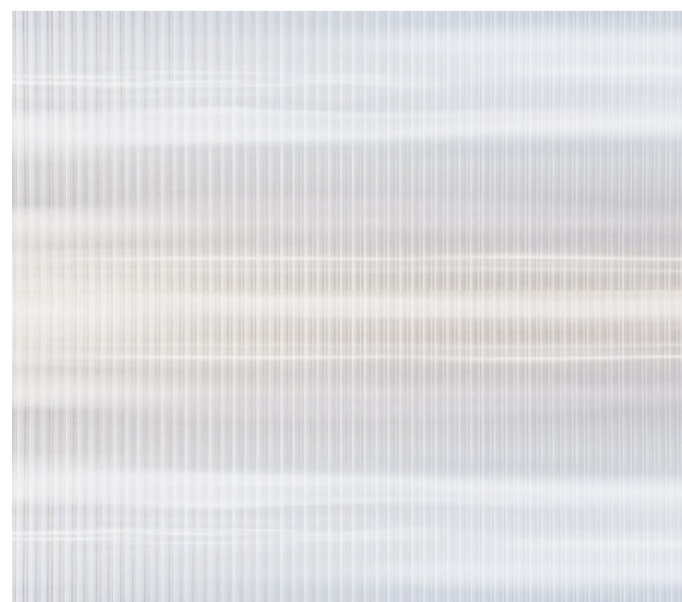
Side Perspective Render  
(Visual by Different.Pictures)



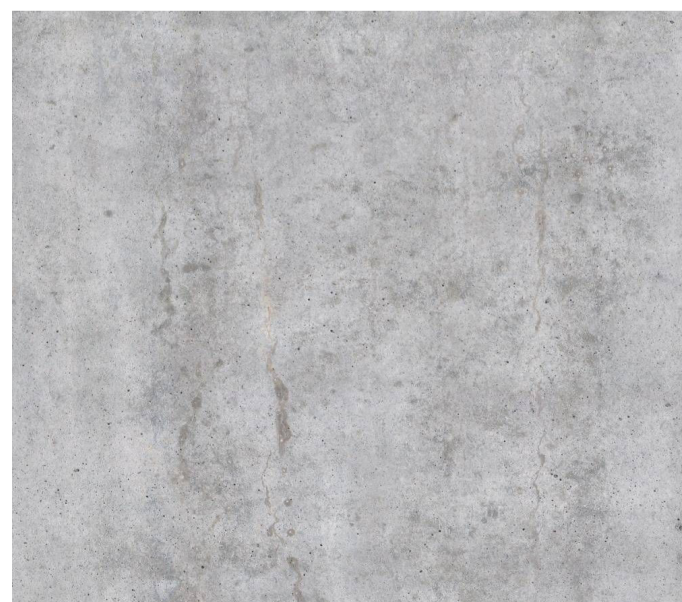
Sketch Elevation



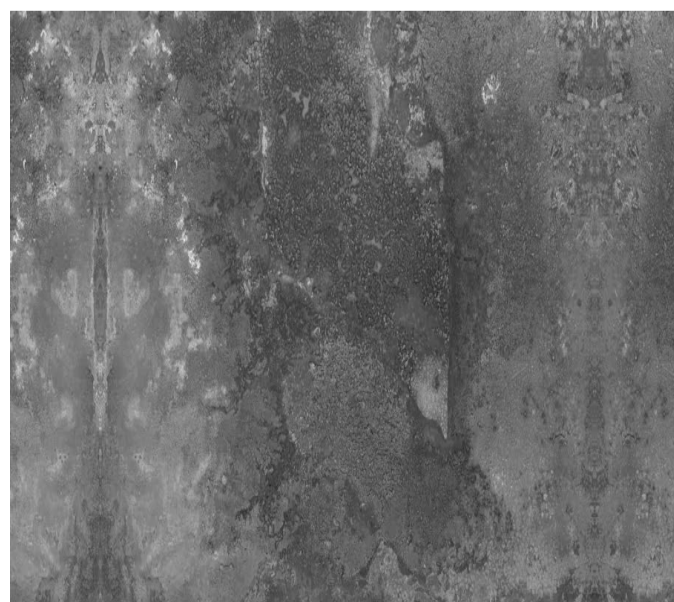
Sustainably Sourced Timber



Recycled Polycarbonate

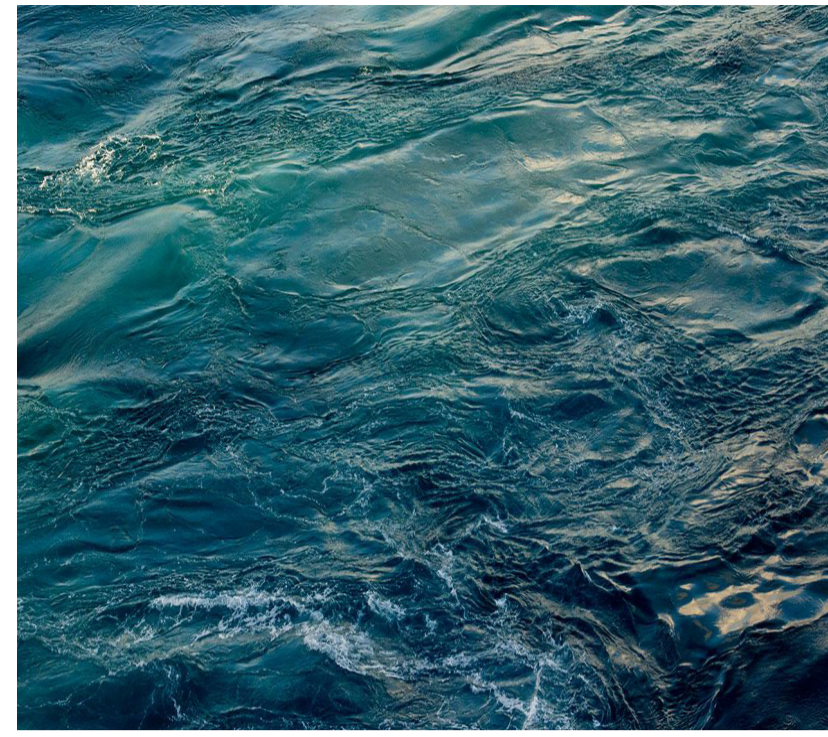


Eco Concrete



Minimal use of Steel

Materials

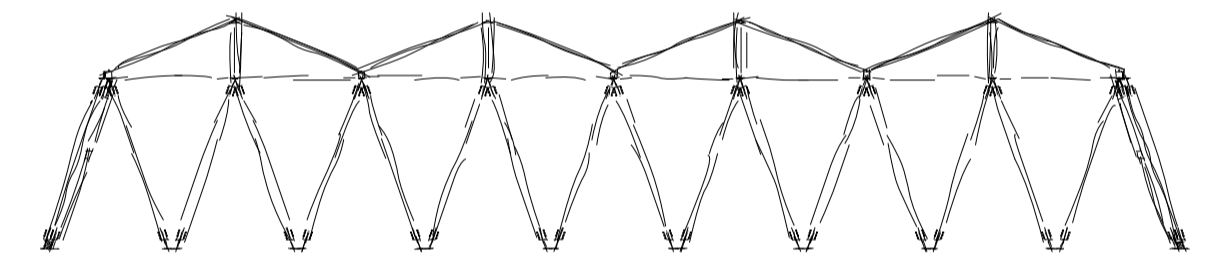
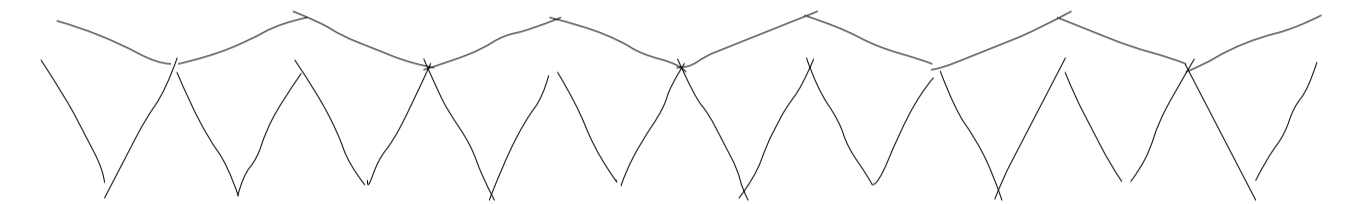
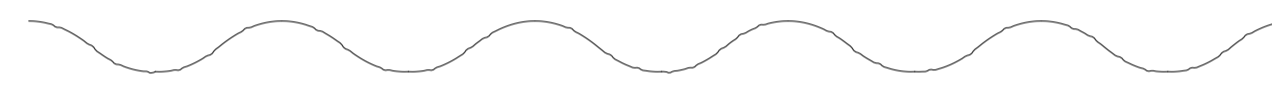
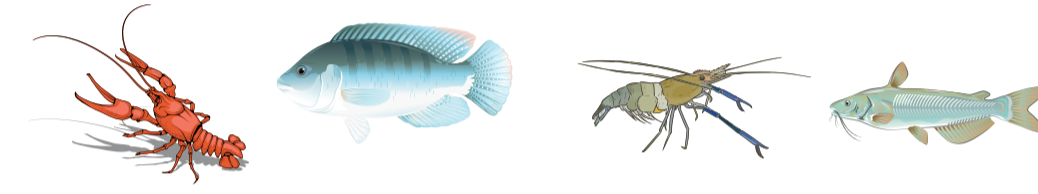


Water Ripples



Sand Ripples

Water and sand are the two components of this project.  
Found in the opposites of worlds the forms they take in their natural state can be remarkably similar.  
Ocean Ranch draws upon these similarities as inspiration.



An Architectural Ripple



Precedents

Timber Framed - Polycarbonate Envelopes - Opening Partitions - Modular Connections