

NEXUS

SYMBIOTIC BUILDING SYSTEMS



WETLANDS

A journey of stepping stones, blending with the natural environment



Wetlands module

The wetlands intervention presents a journey along the water component that is otherwise inaccessible to visitors. It opens up the possibility to have a walk, observe, perhaps take samples and study the flora and fauna in the area.

It consists of components with 1m diameter, that form a deck when aggregated together. The components sit on slender columns that stabilise the deck above the wetland surface with minimum impact on the existing site. The wetlands structure has no permanent impact on the area and can be removed, leaving no trace.

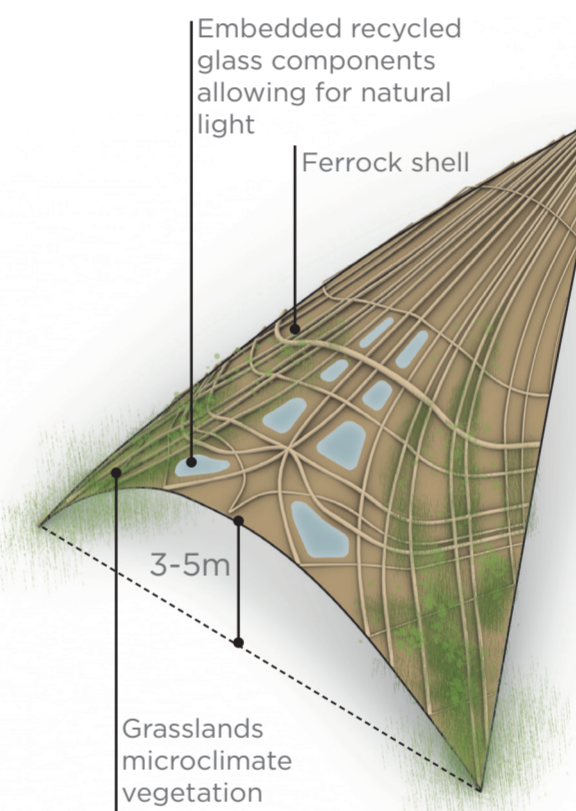


Wetlands section



GRASSLANDS

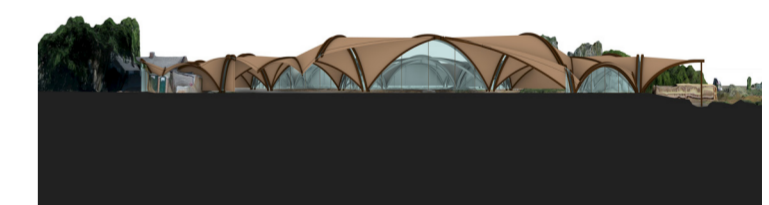
A communal learning space for sharing ideas



Grasslands module

The grasslands were identified as a suitable location for a larger shelter for sustainable education purposes. The selected site shows signs of existing activity in the area, allowing for the proposed structure to plug into the undergoing ventures. The dome module provides the opportunity for staged growth and adaptation of the structure to the future needs of the community.

The grassland modules incorporate recycled glass into the shell, allowing for natural light to reach the interior of the shelter.

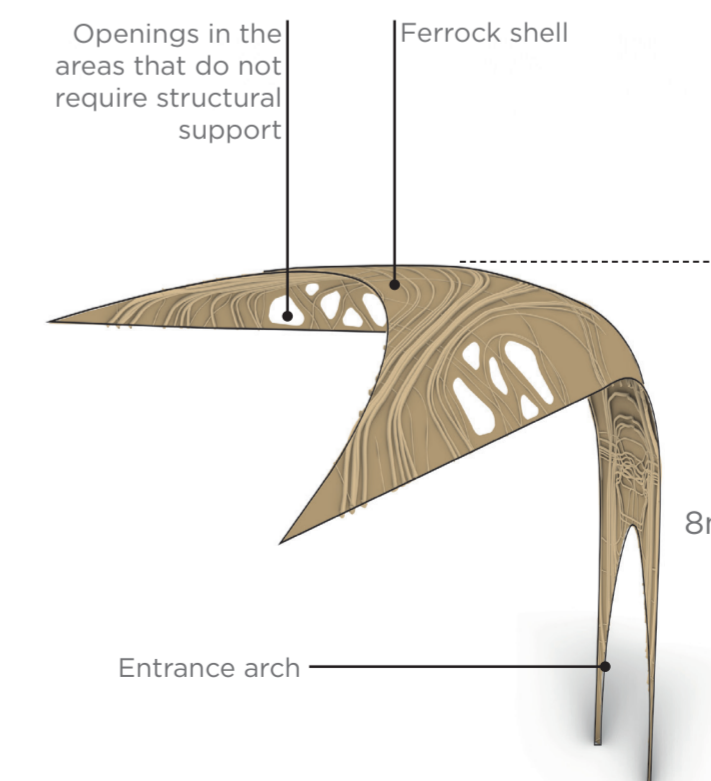


Grasslands section



PLAYA

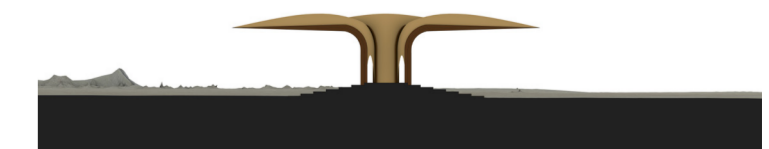
A transcendental experience, together under the stars



Playa module

While perceived as a mesmerising natural phenomenon by visitors, the playa presents a harsh environment for permanent activities. The proposed structure celebrates the history of the site as an event space, gathering people together.

On the exterior, the intervention provides a shading roof over a few radial steps used for gathering larger numbers of visitors. The steps are oriented towards the open playa with the event taking place in the wide open. On the interior, the structure creates an enclosed space for a more intimate and spiritual experience between the visitor and the sky.



Playa section