

THE STARSHIP

The Starship is constructed of pre-fabricated components that can be assembled and utilized for a period of time on a particular site; and then be disassembled, transported and re-assembled on a new site. Shipping containers are re-purposed as flexible live / work and support spaces. The center of the Starship shall be a large gathering space for activities as varied as concerts, parties, meetings, maker space, and co-working.

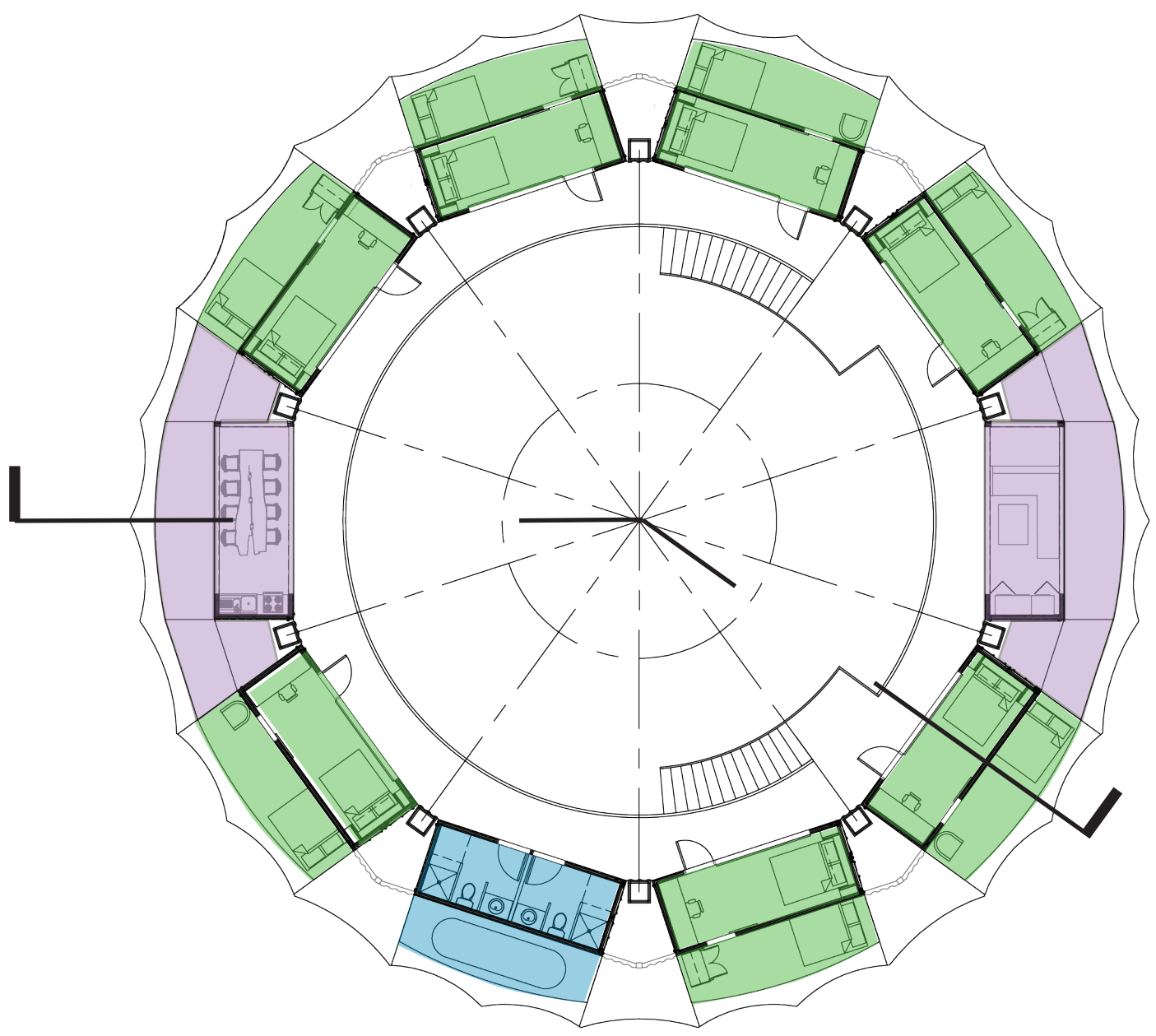
20' modified shipping containers are primary building module and provide a plug n play framework for interior spaces as well as the off-grid infrastructure components. The container modules and other elements will be covered with murals and other elements to integrate artistic expression throughout the Starship.



Kitchen Module

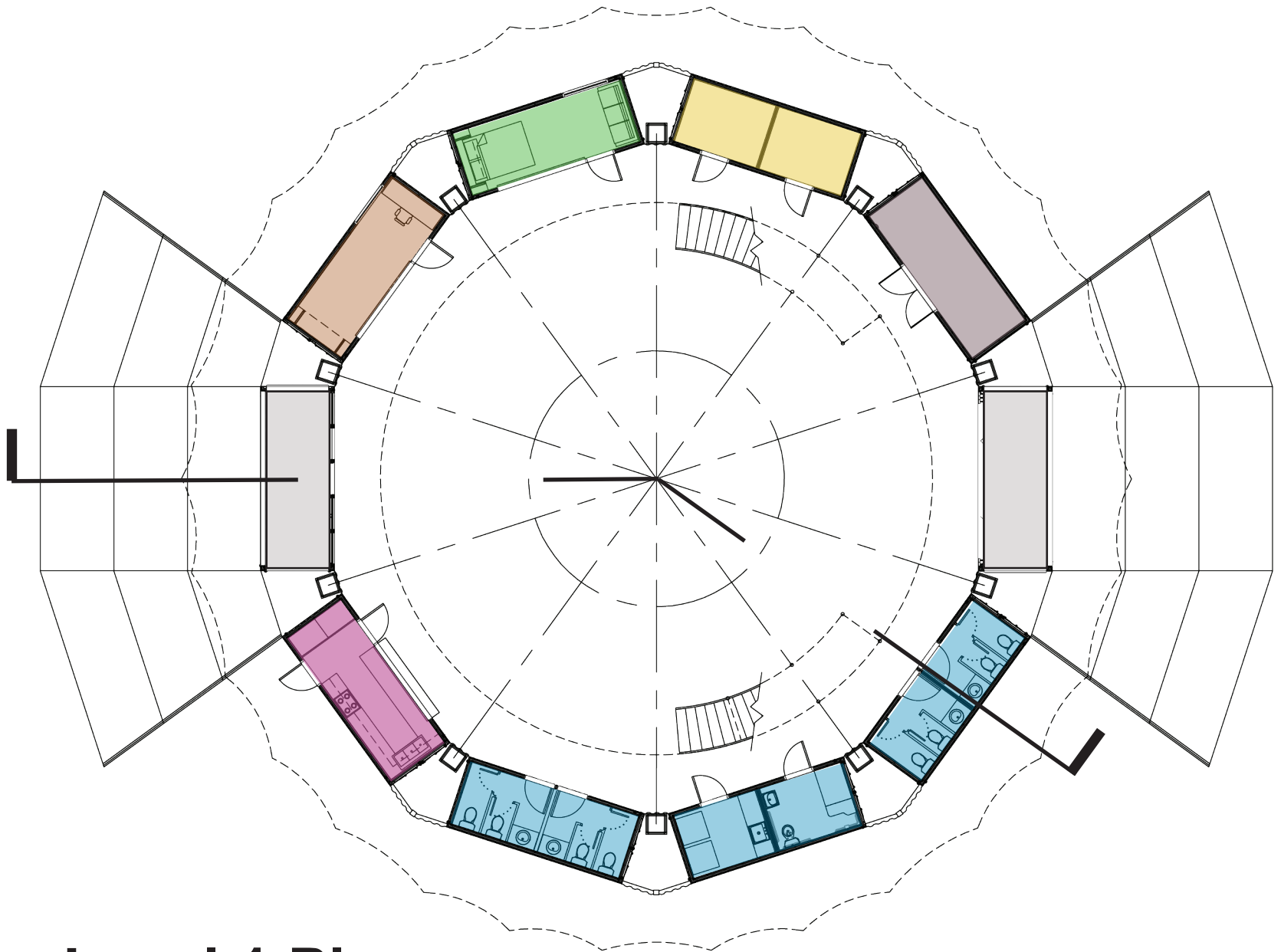


Flex Modules can be configured for various uses



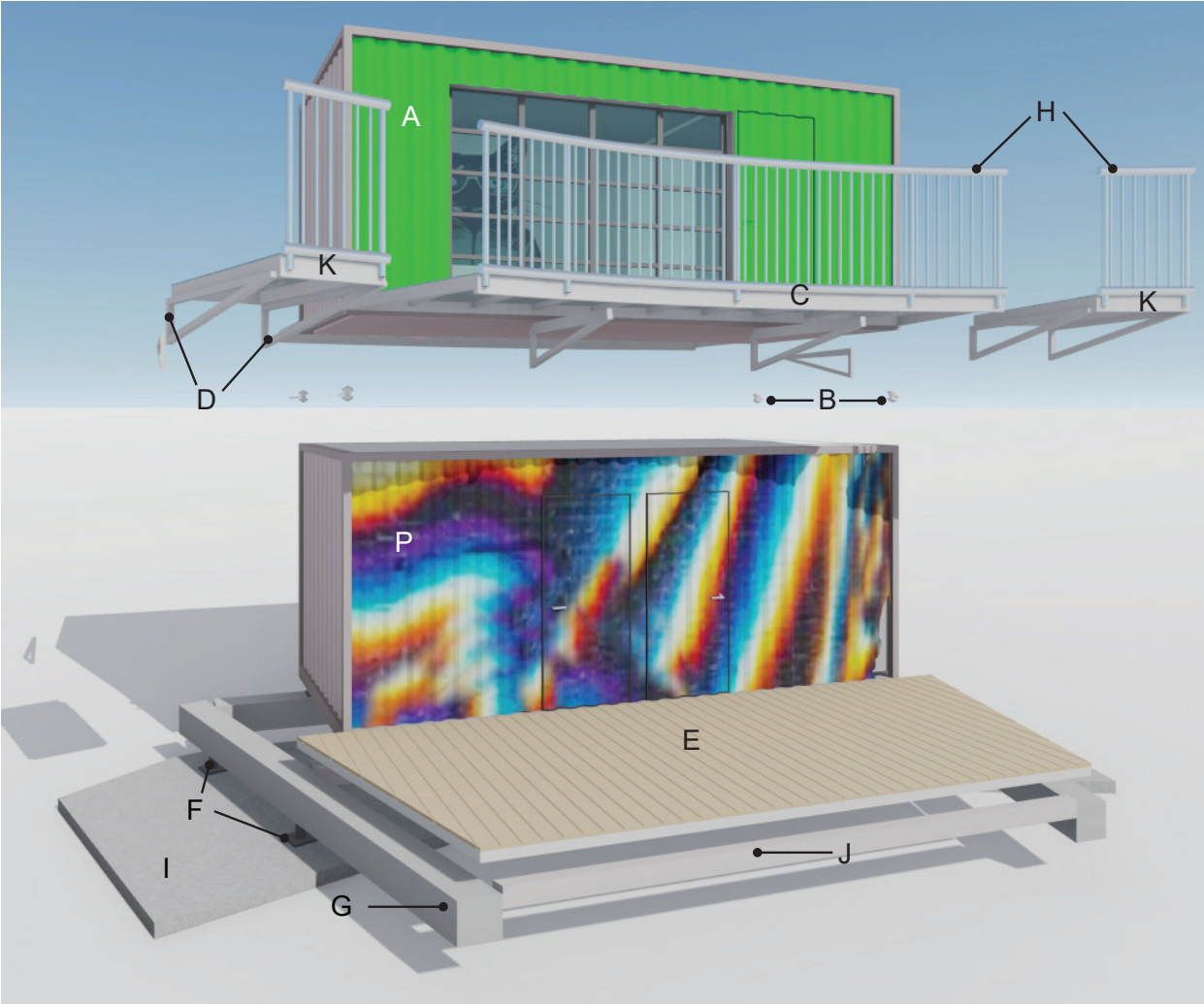
Level 2 Plan

Scale: 1/16" = 1'-0"



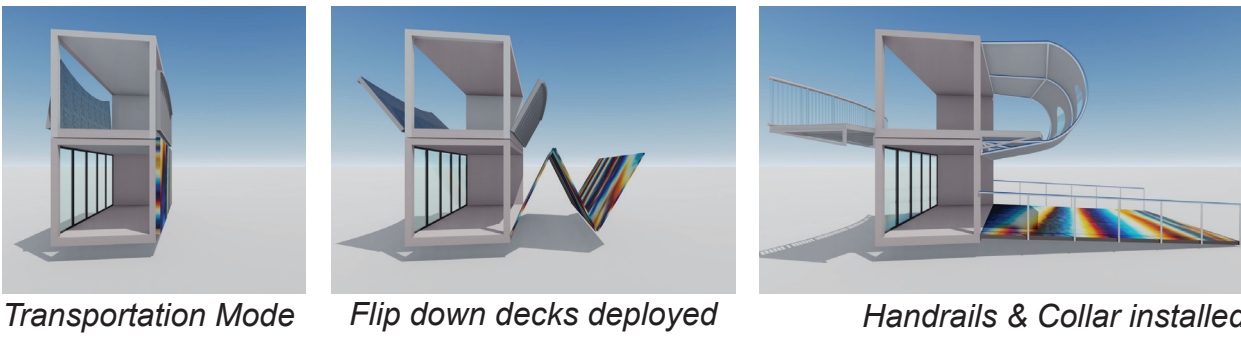
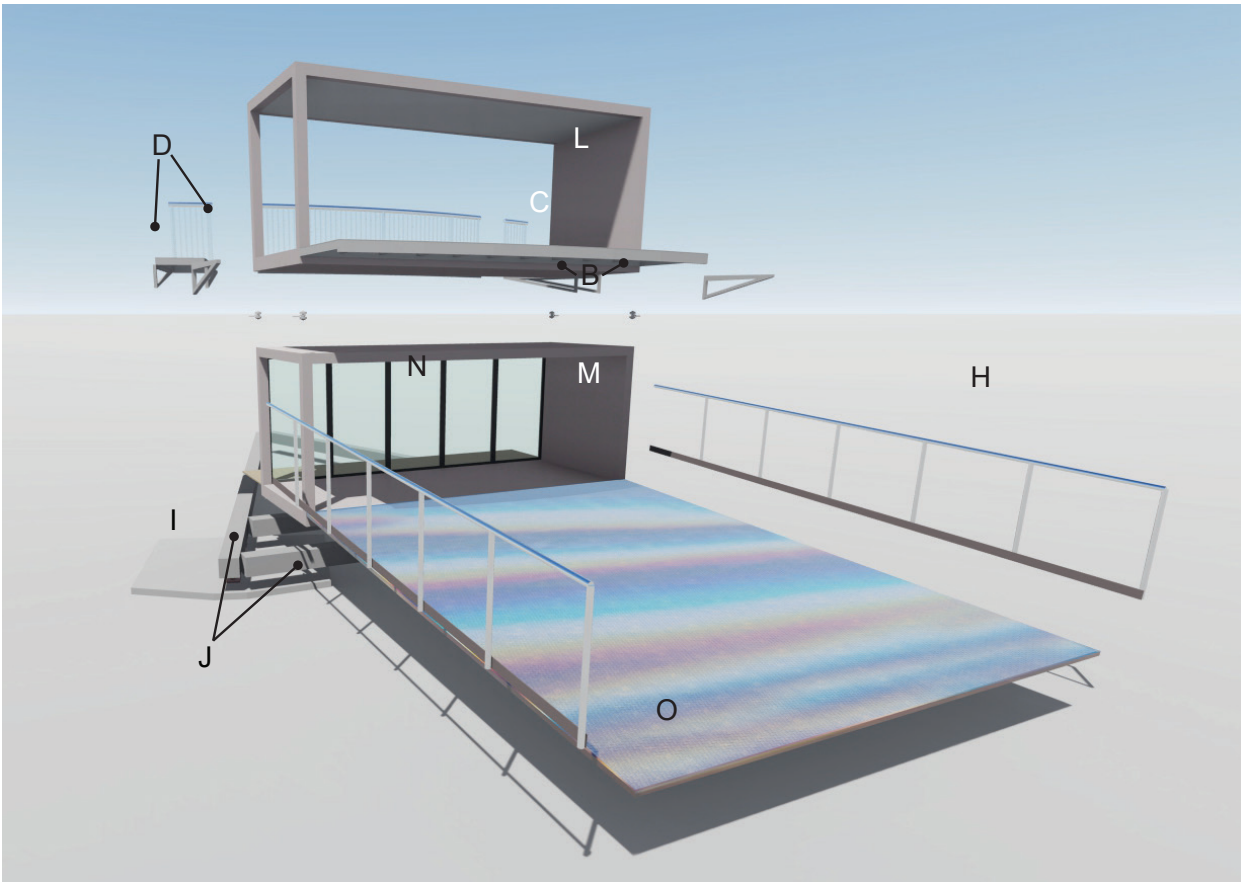
Level 1 Plan

Scale: 1/16" = 1'-0"



Container Module Assembly

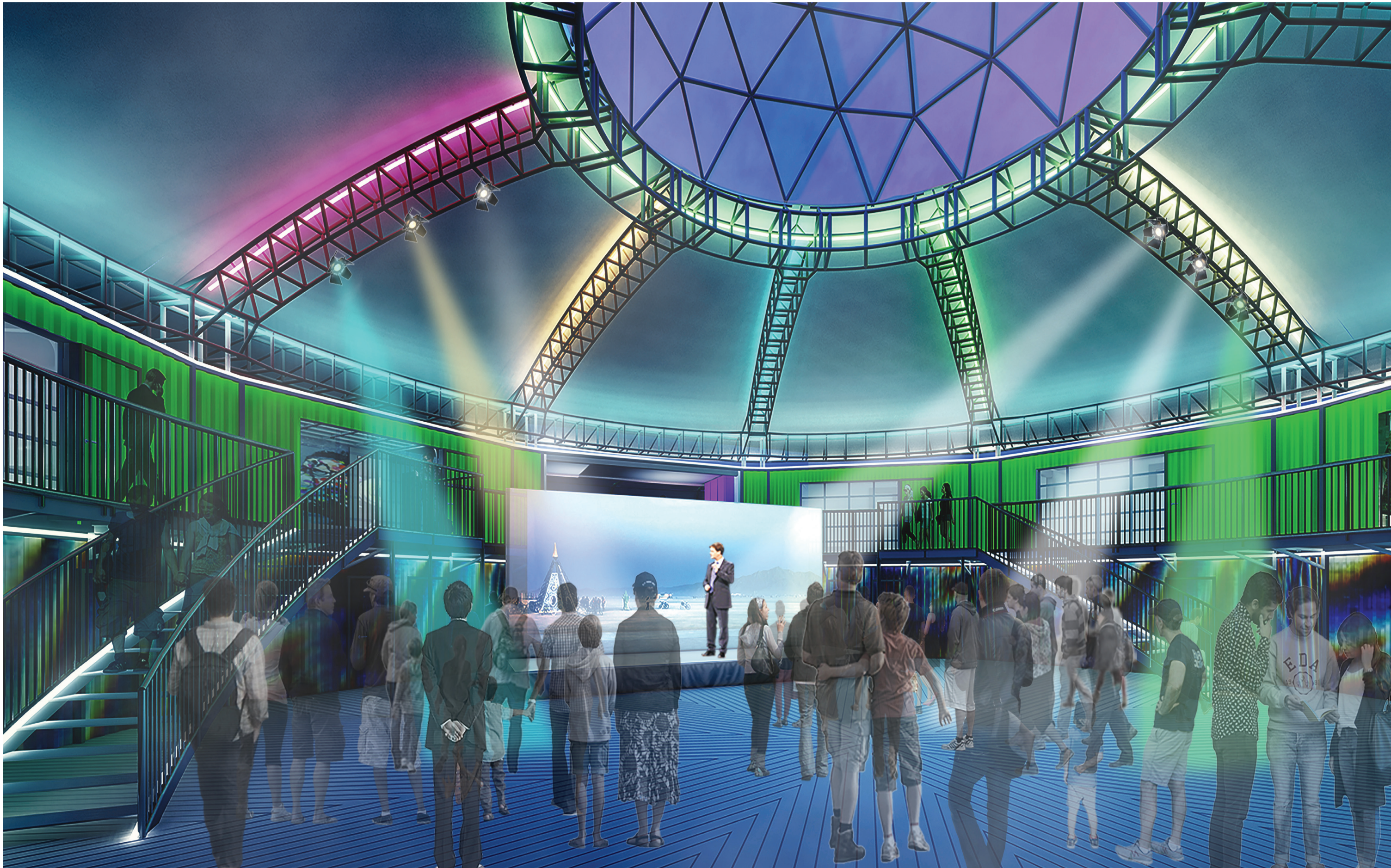
- A. Flex Module** - 20'x8' modified shipping container w/ glass garage door & Murphy Bed.
- B. Twist Lock Container Connector**- Connects upper and lower shipping containers
- C. Flip Down Deck** - Bolted to shipping containers and steel struts.
- D. Strut** - Bolted to shipping container to support flip down deck.
- E. Floor Deck** - SC90 Platform w/ TREX flooring, connected to purlins.
- F. Leveling Jacks** - Connect substructure to concrete pads.
- G. Floor structure** - Steel beam "wagon wheel" substructure.
- H. Handrails** - Bolted to upper decks / Ramps.
- I. Foundations** - Concrete ballast pads
- J. Purlins** - Span between floor beams and support decking system.
- K. Gap panels** - Span between container decks to create circular walkway.
- L. Lounge Module** - 20'x8' modified shipping container - walls removed.
- M. Entry Module**- 20'x8' modified shipping container - walls removed.
- N. Folding Glass Wall System** - Operable door system w/ center egress door panel
- O. Flip Down Ramp** - Entry Ramp, bolted to shipping containers.
- P. Plumbing Module** - 20'x8' modified shipping container for Restroom .



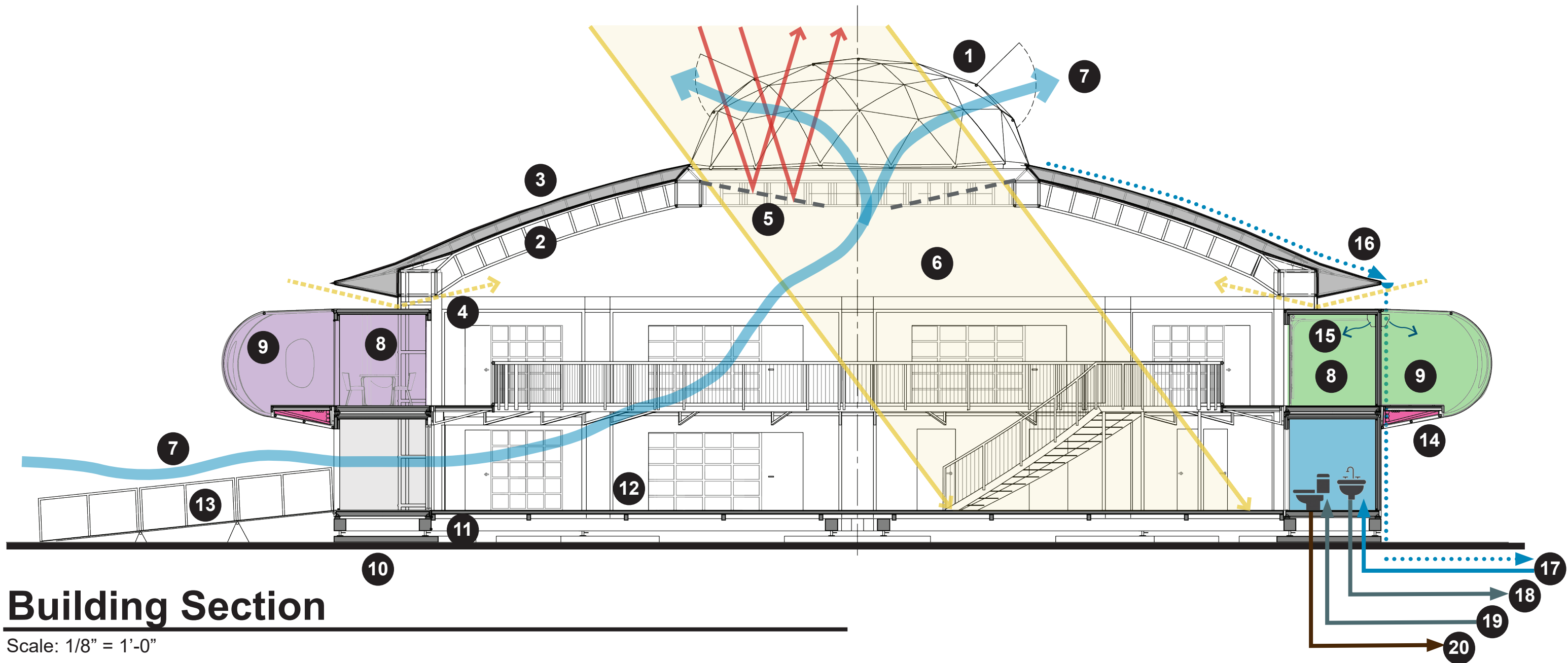
Transportation Mode

Flip down decks deployed

Handrails & Collar installed



Gathering Space in an event configuration



Building Section

Scale: 1/8" = 1'-0"

Construction Notes

- Geodesic Dome w/ operable vents
- "Rock n Roll" aluminum truss roof structure
- Double membrane fabric roof w/ radiant barrier & insulation
- Translucent membrane clerestory for ambient daylighting
- Retractable shade awning to reflect solar gain in cooling mode
- Solar gain in heating mode
- Natural ventilation - intake from entry modules / exhaust thru vents
- Modified Shipping container module
- Collar w/ fabric roof structure
- Concrete ballast pad foundation
- Steel beam "wagon wheel" substructure
- Flooring over purlins
- Flip Down ramp
- Utility chase
- Mini-split HVAC for container modules
- Roof water captured to fresh water storage
- Fresh water supply to plumbing
- Grey water to filtration & storage
- Grey water supply to plumbing
- Black water to Bioreactor

Container Module Key

- Flex Module**
Live / Work / Meet
- Lounge Module**
Eat / Chill / Meet
- Office Module**
Management / Admin
- Entry Module**
Entrance / Porch
- Plumbing Module**
Restroom / Showers / Laundry
- Kitchen Module**
Commercial kitchen
- Utility Module**
Mechanical / Electrical
- Storage Module**