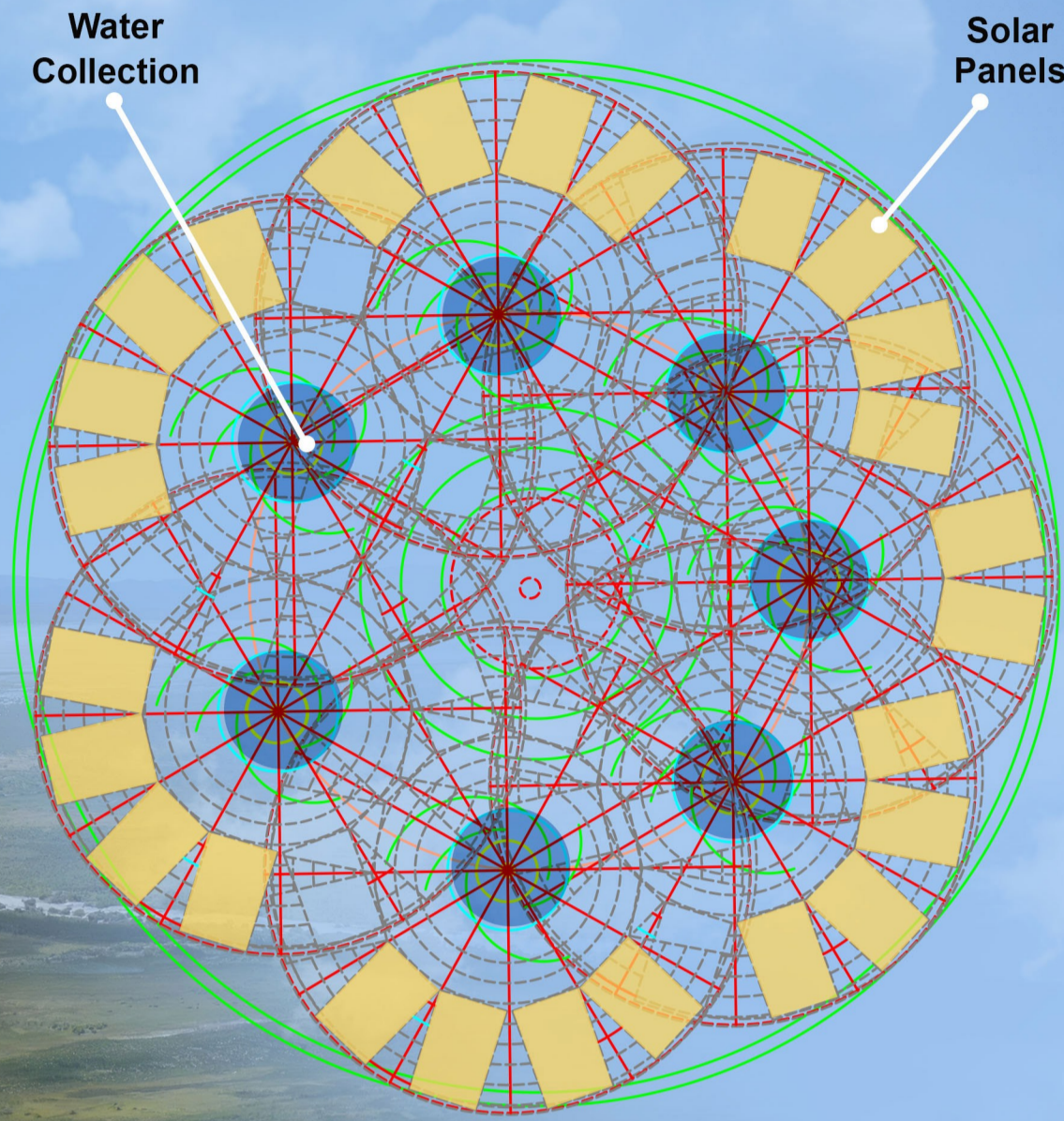


# GEYSER OASIS



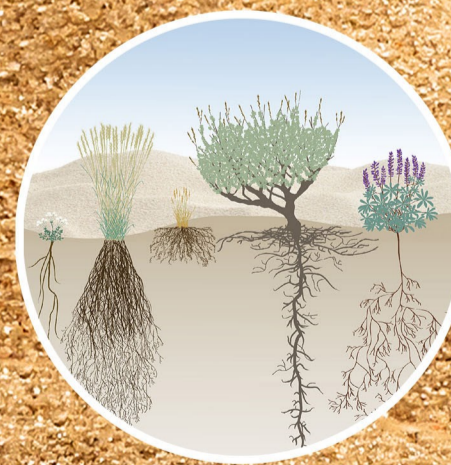
## BIO-INSPIRATION

SUNFLOWER



- Spiral Growth
- Space optimization
- Efficient distribution

SAGEBRUSH



- Co-operative network
- Underground resource sharing

DATE PALM



- Shade structure
- Solar energy & water collection

NW Primary wind over reservoir harvests air moisture

Shading and cooling community Oasis

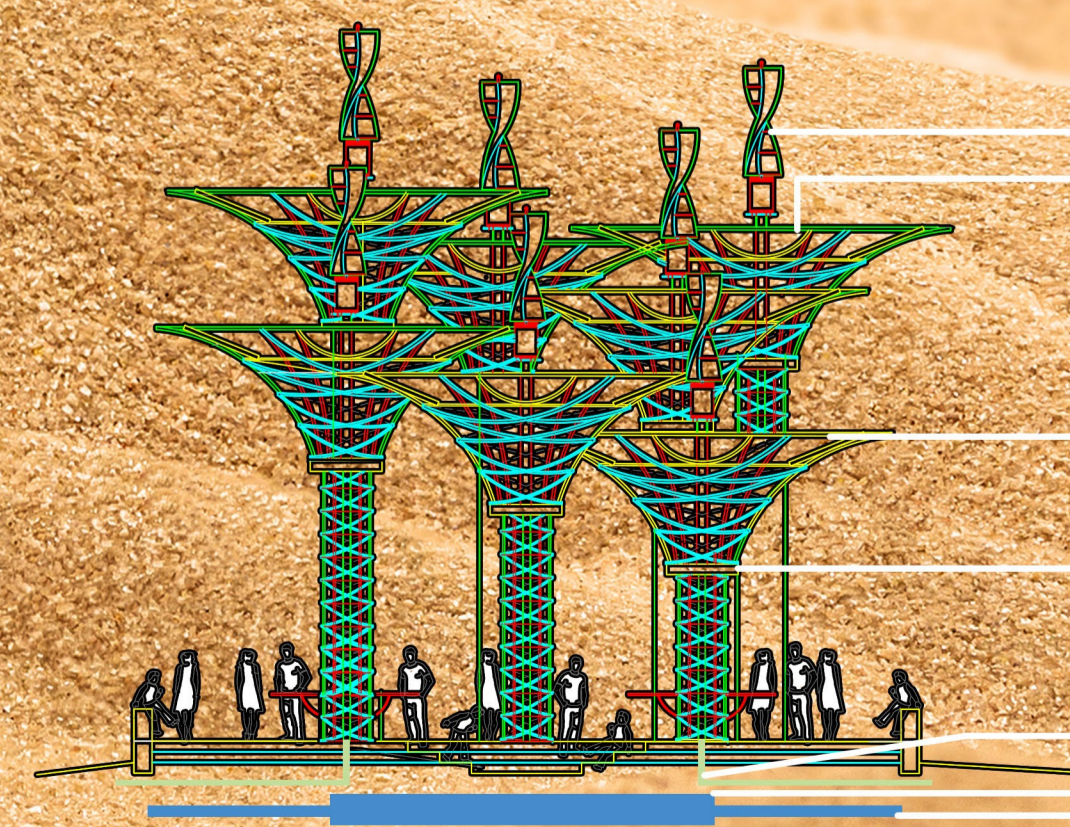
Water distribution from Oasis underground storage to all shelters

Solar and wind power feed from Oasis to all shelters

Kitchen gardens



## COMMUNITY PLAN



• Double helix vertical wind machines

• Water Collection

• Solar panels

• Water misters

• Power to community

• Water filtration and Storage under Oasis

• Water to community

## OASIS RESOURCE SHARING