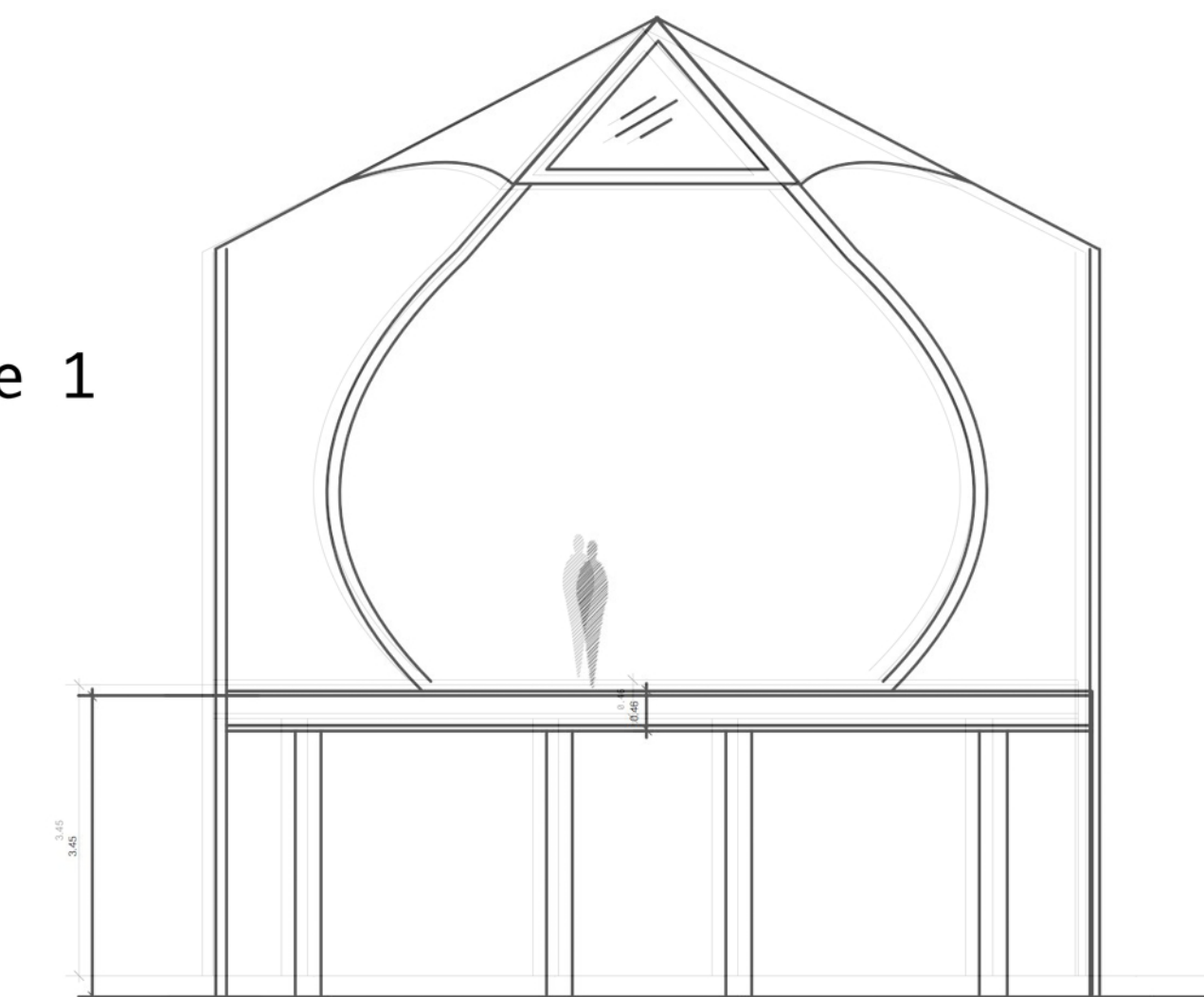




stage 1



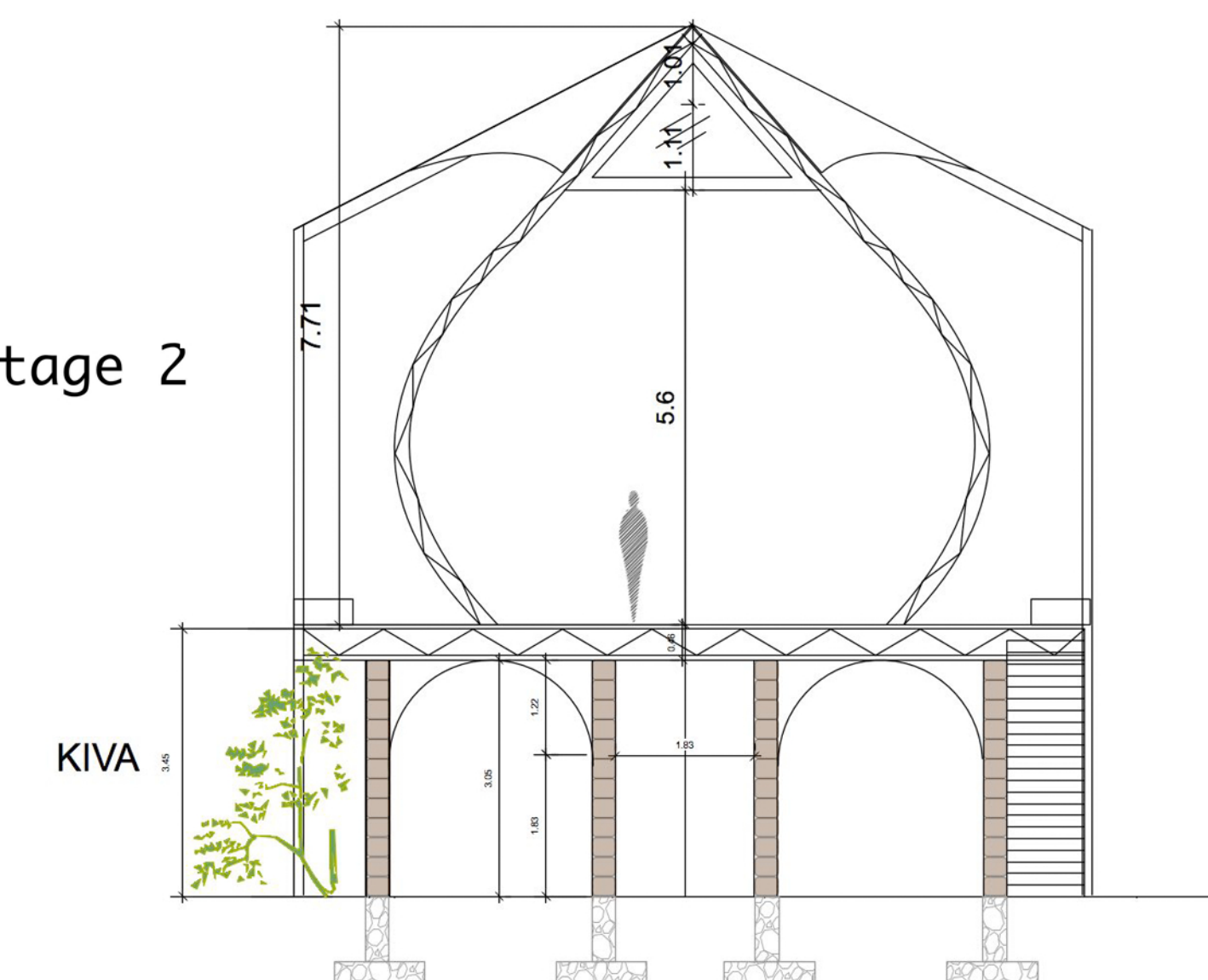
Growing Ta -Se -No in Stages

Stage 1 is the competition level . A temporary timber platform is constructed and the Star temple frame is constructed, With a hemp canavs shade roof.

Stage 2.. is the experimental with local Earth construction to make the Earth Kiva below. Water is solar pumped to try to grow vine that start to provide a micro climate.

Stage 3 is the decision to make the structure permanent with a permit, solar panels and utilities, lighting, secure doors and the addition of an insulated wall and impermeable skin to the star temple above with window design that reflects the 12 zodiac signs. The Kiva below becomes hard skinned with low impact cement and lime to bounce the sound around. Lighting is added to facilitate an information exhiit about the springs and the healing design of the building. It becomes bookable

stage 2



stage 3

