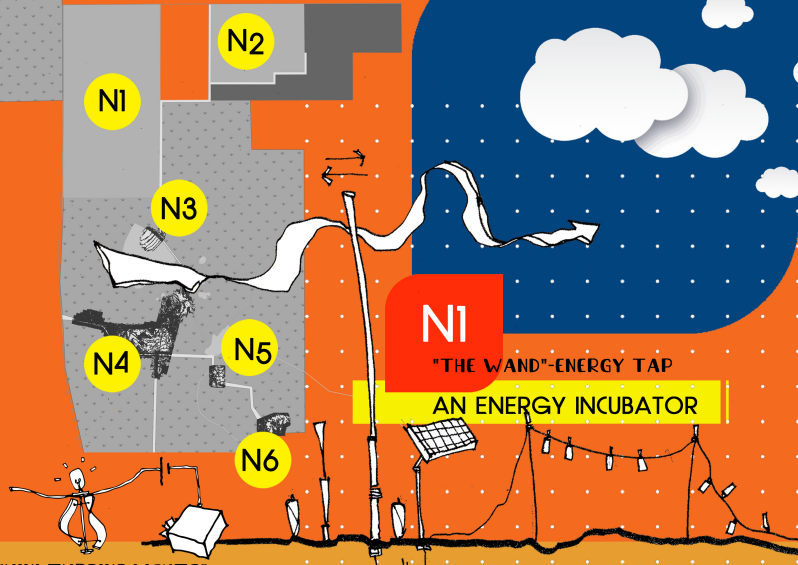


NORTH FLY RANCH

KEY PLAN



N1

"THE WAND"-ENERGY TAP
AN ENERGY INCUBATOR

N2

"THE BECKON"- A GATHERING SPACE

N2

NORTH FLY RANCH

LITTLE BLACK BOX

An attempt to create ART FORMS - Curatorial work BEAUTY ON A LARGE SCALE FLOW OF THE USER VS GEOMETRY OF THE SITE PLAYING WITH OBSERVATIONS & SCENARIOS

"MINI TURBINE LIGHTS"

Design of wind turbine systems to tap wind and solar energy-To make the pockets as a WAY FINDING TOOL for the rest of the fly ranch-REPLICABLE ENERGY MODELS that can be distributed anywhere in the fly ranch model.

TORSO-Flexible space-Tensegrity structural design-Free standing planes -Mast support roof system-Temporary structure-Rain water collection and storage-Geometry & profile of the roof systems can be modified-Morphologically modified.

N3

MY NAME IS OZYMANDIAS, KING OF KINGS; LOOK ON MY WORKS, YE MIGHTY, AND DESPAIR



DESERT ART PARK

"THE HUALAPAI MAN"

"THE CLOAK"-AN EVENT SPACE

AN EVENT VENUE

N4

AN ART SPACE

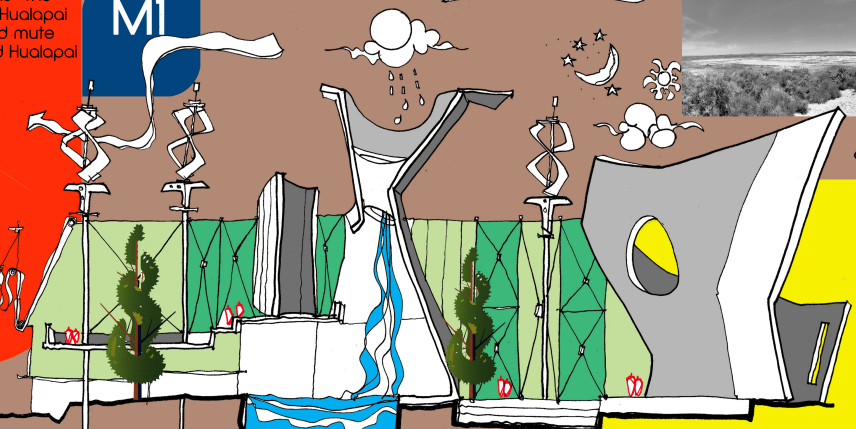
HUALAPAI ART MUSEUM

"THE HUALAPAI MAN"-VISITOR INFORMATION CENTRE

INSPIRED FROM THE POEM OZYMANDIAS- The head of the sculpture symbolizing the Hualapai tribe-The emphasis to the fly ranch and mute witness of time-Information centre and Hualapai virtual tour museum

M1

MIDDLE FLY RANCH



BOTANICAL GARDEN

"THE EDEN"

M3

THE EDEN-Rain water savings-solar energy-Passive Heating & cooling Techniques WATER SEER-37Litres of dean drinking water by a small turbine-Catwalk bridge connecting the two parcels of the botanical garden on the two parcels M1 and M3

SITE TERRAIN

VIEWING TOWER "BOOT"

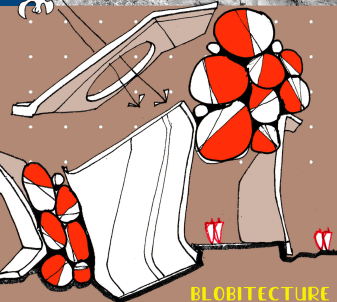
HUALAPAI ART MUSEUM

BRUTALISH

N4

"THE CLOAK"

EXPERIMENTAL DESIGN



BLOBITECTURE

FLY RANCH LAGI 2020