

MAIN FUNCTIONS



VERTICAL FARMS

Our vertical farms are composed of 35'000 sqm hydroponics and aeroponics cultivations that, together with the fish breedings' tanks and the greenhouses on the ramp, contribute to the food supply of the building inhabitants.



BUNKHOUSE

Inspired by old wild west's bunkhouse, we designed a two-storey residential ring, 50 meters above the ground level, to host the people living, working or simply visiting the building.



ARTISTS' STUDIOS

These 6'500 sqm space is meant to give to artists and designers a place to work and to express their art and ideas. The aim is to create an incubator for the development of art installations regarding to future editions of the burning man.



RE-USE FACTORY

Developping the zero-waste concept the idea is to throw in the garbage as less as possible. We want to re-use cultivations's remainings as bio-mass power source and fertilizer, and burning man event's waste as recycled materials for future installations.



HORSEBACK RIDING

This will be one of the activities implemented on the ground level of our design proposal. We wanted to create a strong link with local culture and at the same time to keep cultivating old traditions such as horseback riding implementing them in our project.



SHELTERED PLAZA

The fog catcher and the solar farm implemented in our design will serve not just as a power source to get an energy self-sufficiency, but also to provide a sheltered outdoor space in the center of our project to host installations and events.

FUCTIONAL ISOMETRIC

FRIED BREAD RESTAURANT

SARAH WINNEMUCCA OBSERVATORY

VERTICAL FARMS

VERTICAL DISTRIBUTION

GREENHOUSES AND PERMACULTURE

OBLIQUE LIFT

BUNKHOUSE

BUNKHOUSE TERRACE

HORSEBACK RIDING

PAIUTE TERRACE

ARTISTS' STUDIOS

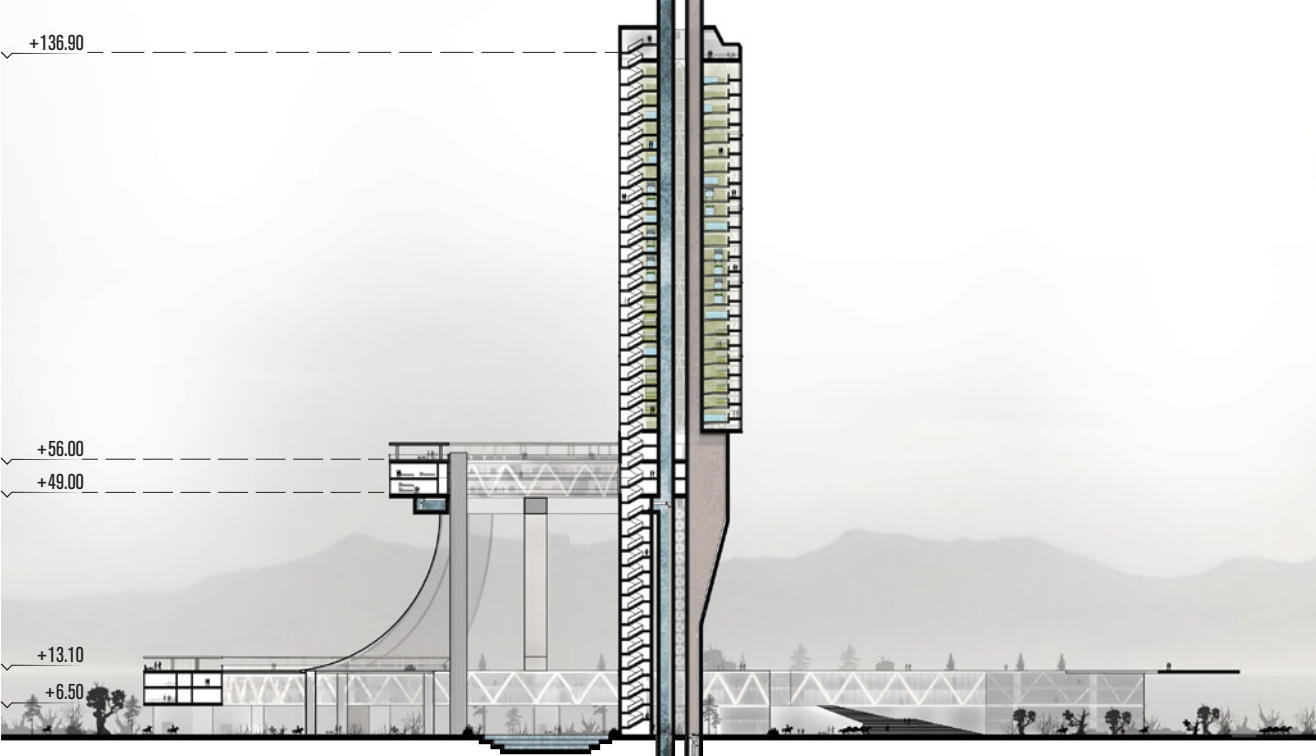
SOLAR FARM

FOOD LABORATORIES

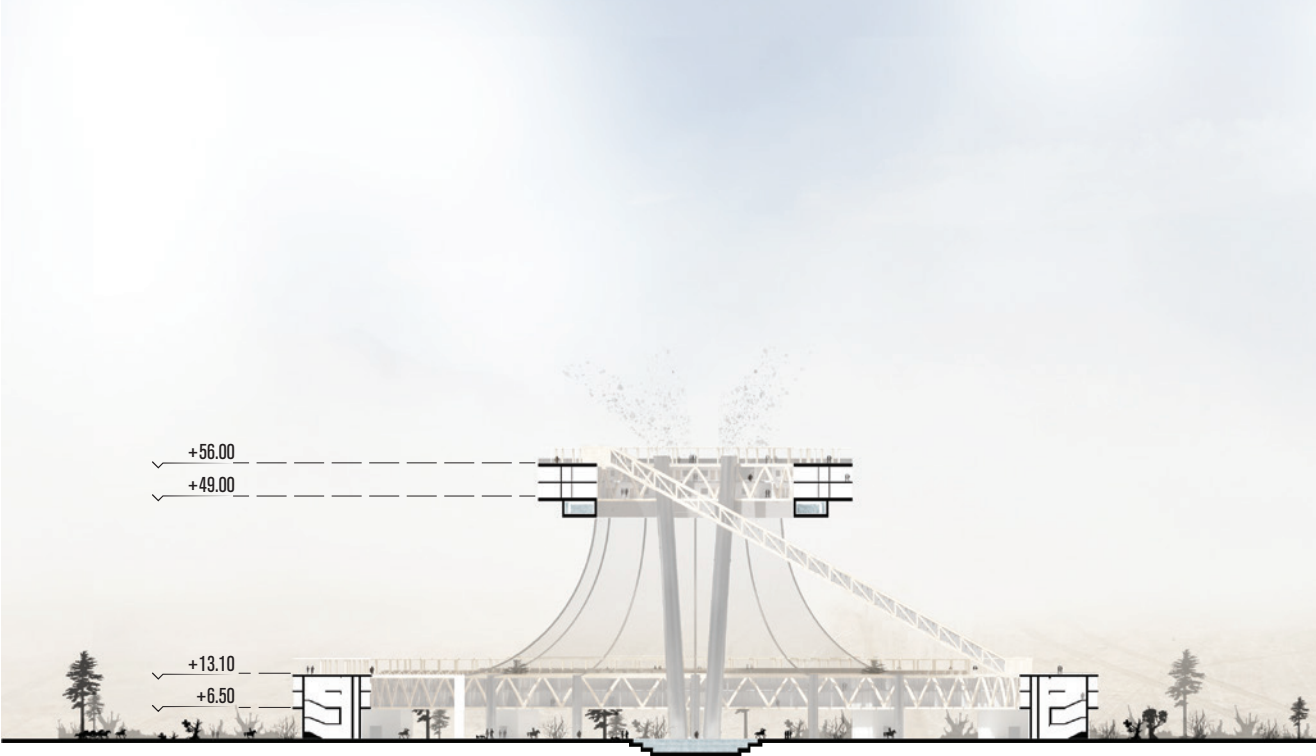
FOG CATCHER

SHELTERED PLAZA

SECTION A-A'



SECTION B-B'



DESIGN PLANS

