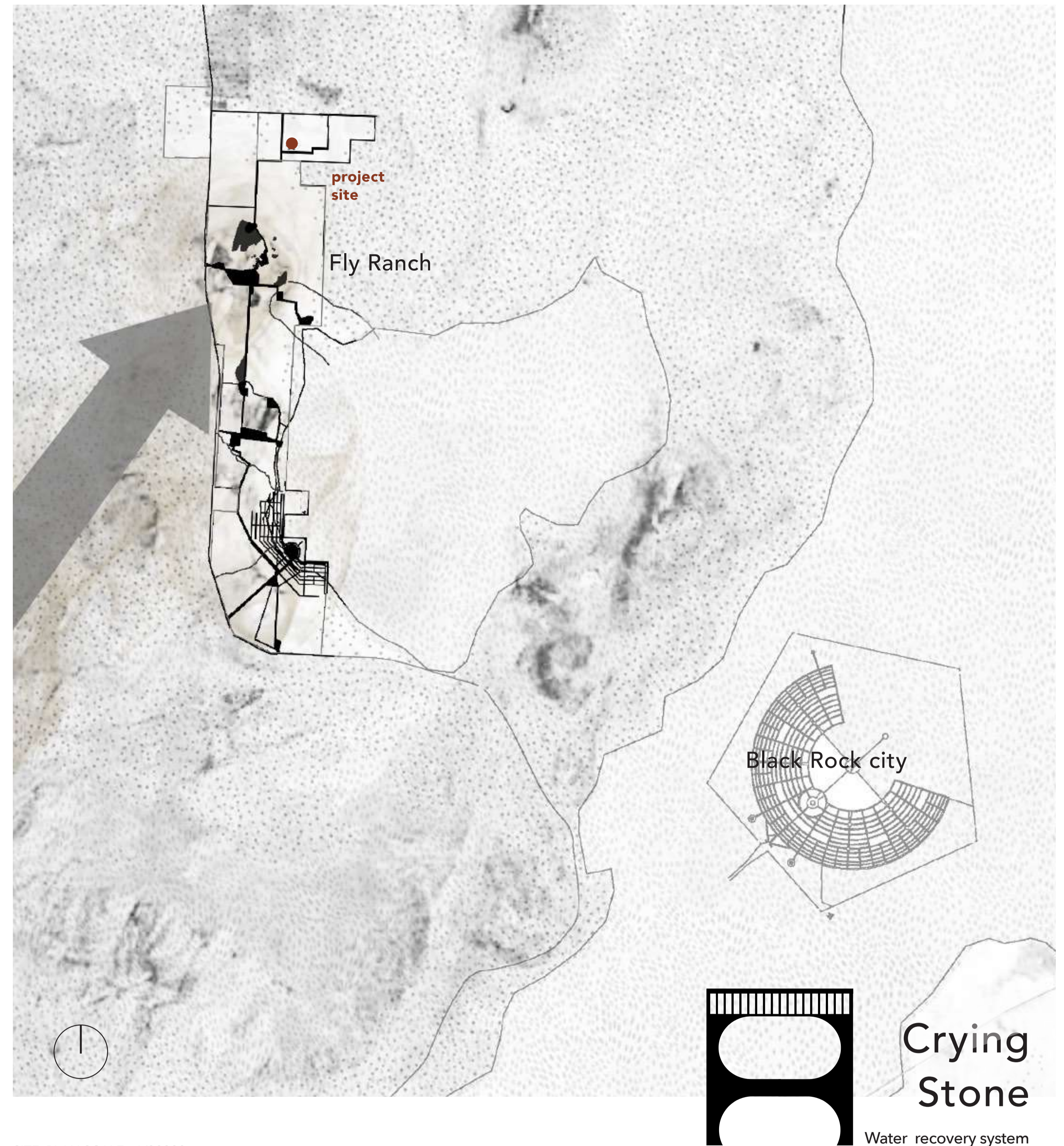




SCENE 1 : AN OASIS IN THE DESERT, BIRD'S EYES VIEW



The resource of life is water.

Especially in dry landscapes like deserts it is important to have water but there is only little of it. Although nature has organized itself, through adaptation and developed mechanisms to draw water from the air. But due to global warming, water evaporates quickly and plants are blown away by the wind because they cannot take root, which has a big impact on Animals and insects. The Fly Ranch area has these kind of conditions. It has been part of the Burning Man area since 2016 and is located 5 miles from the Black Rock City and in the short distance the nature changes a lot. With a size of 3800 acres, the Fly Ranch forms an extreme ecosystem with hot summers (105°F) and cold winters (0°F). It give places to many different animals and more than 100 plant species, as well as three geysers. Behind that background lies the question what impact we (humans) have on nature. More than ever we have to ask ourselves this question to reduce the CO2 emissions and take the laws of nature seriously and adapt to them - not the other way around. Similar to nature, our proposal is to draw water from the air in order to support the already existing nature without changing it, by creating water for animals, nature and human beings.