

# NEW SCULPTED FLY RANCH

**DATA**

The temperature ranges from below 0 °F (-18 °C) in the winter to over 105 °F (40 °C) in the summer.

Fly Ranch in the year 2050 will experience

THE LANDSCAPE

Zero Emissions

3,800 acre + hot and cold springs + 3 Geysers + Acres of Wetlands + Dozens of animal + More 100 plants

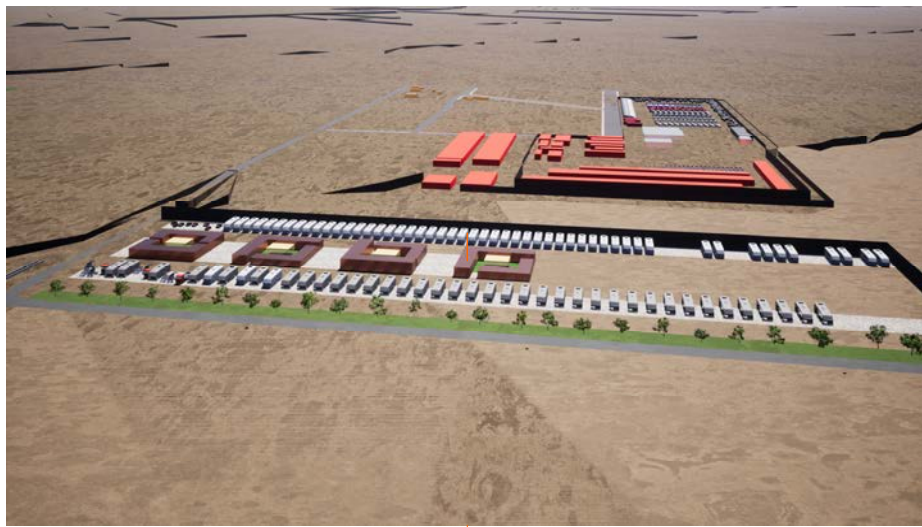
To Host residencies, gatherings, and projects

A sustainable model for communal living

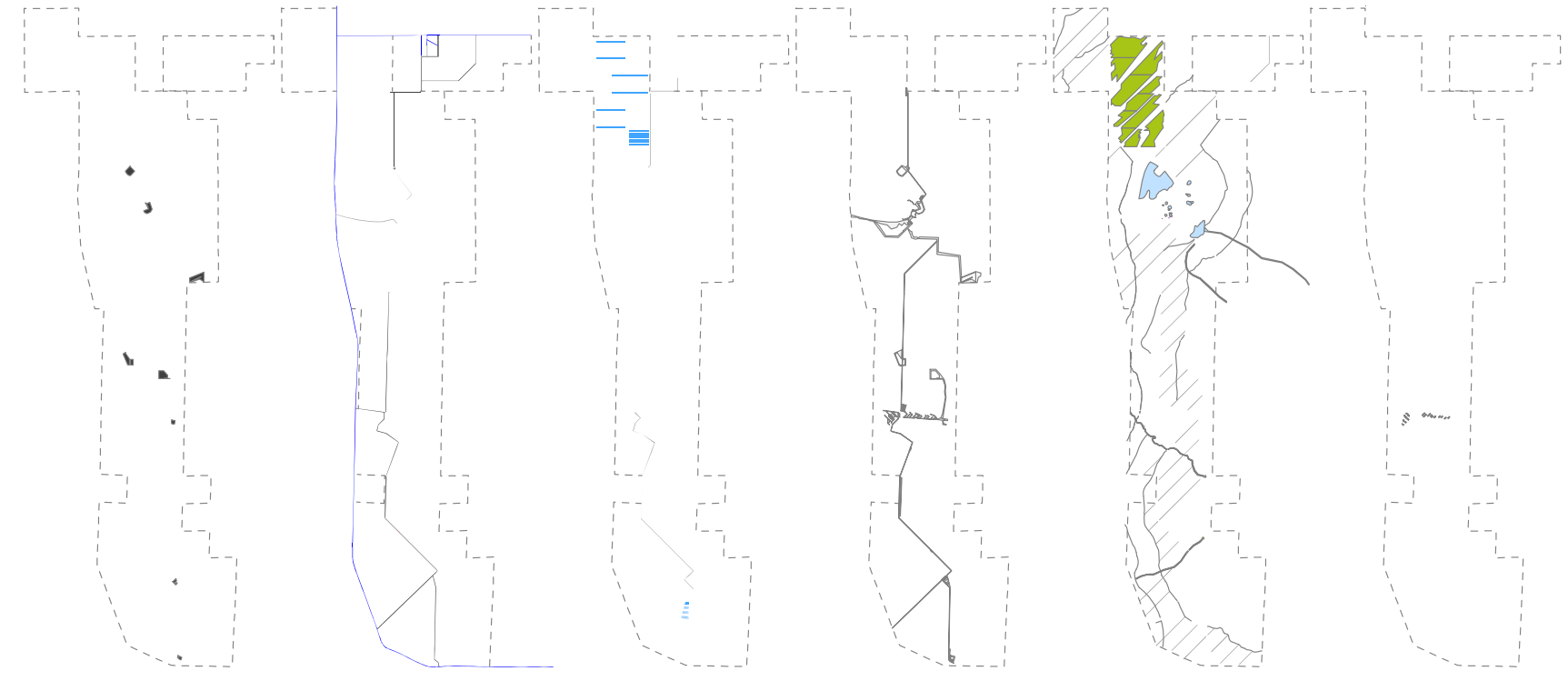
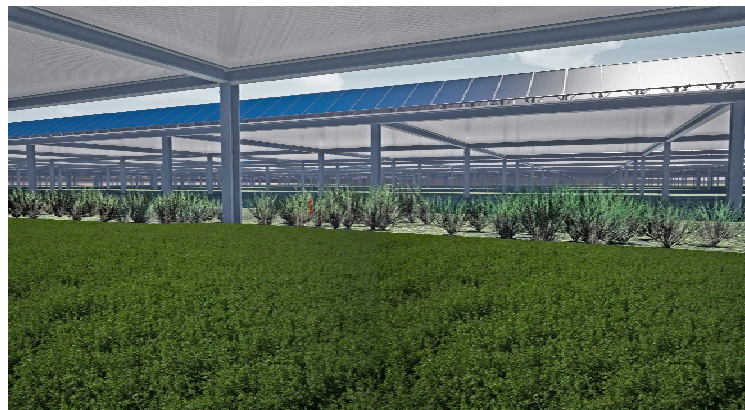
Fly Ranch (3,800 acres) + Black Rock Station (200 acres) + Lower Parcel Near Gerlach (360 acres)



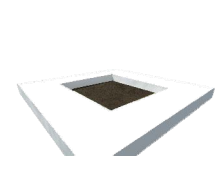
New Black Rock Station



Agrivoltaic. Solar panels in elevated structure with crops underneath



Scalar Space Gaps

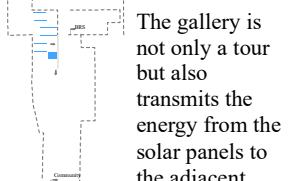


Roads (existing and new)

The concept is to make a hole in the ground (structural) and serve as a guide on the road.

These gaps to be able to climb and down give you the idea of the scale of the place.

Gallery and Solar panels



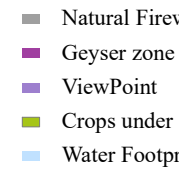
The gallery is not only a tour but also transmits the energy from the solar panels to the adjacent spaces.

Pedestrian zone



PARASOL  
In certain parts of the route

Natural spaces



Natural Firewall  
Geyser zone  
ViewPoint  
Crops under solar panels  
Water Footprints  
Water tank

Community spaces

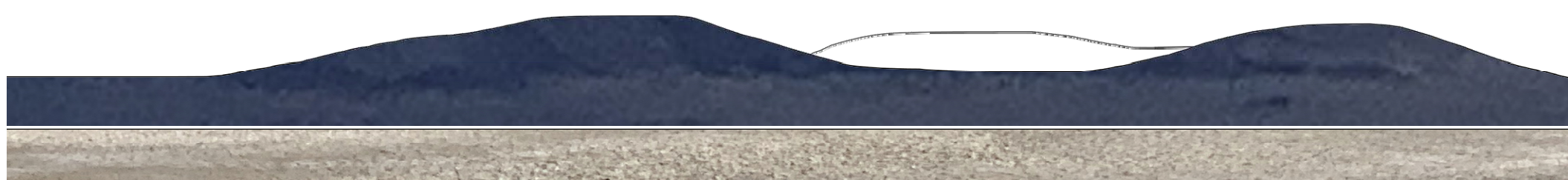


- Key
- Primary Boundary
  - Secondary Boundary
  - Conservation Boundary
  - Fly Ranch Parcels
  - Black Rock Station Parcel
  - Playa (alkaline flat)
  - Ponds

Looking at the place, you will find a large plain with mountains all around it. I mean, nothing in its heyday. Therefore, our project will respect the environment and will not make buildings that stand out very high as what dominates is Everything in the middle of nowhere

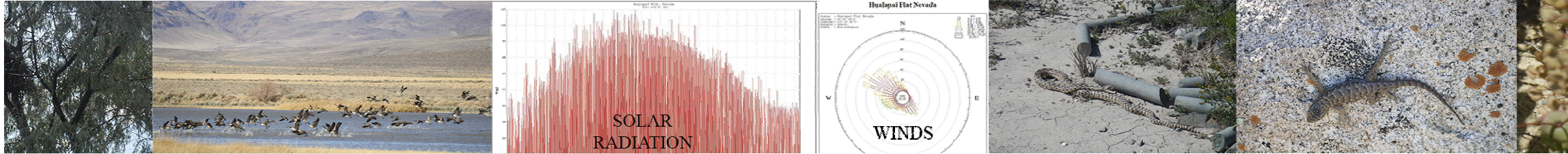
A INHOSPITABLE PLACE

Therefore, sculpture is the terrain and the shape is given by the human being.

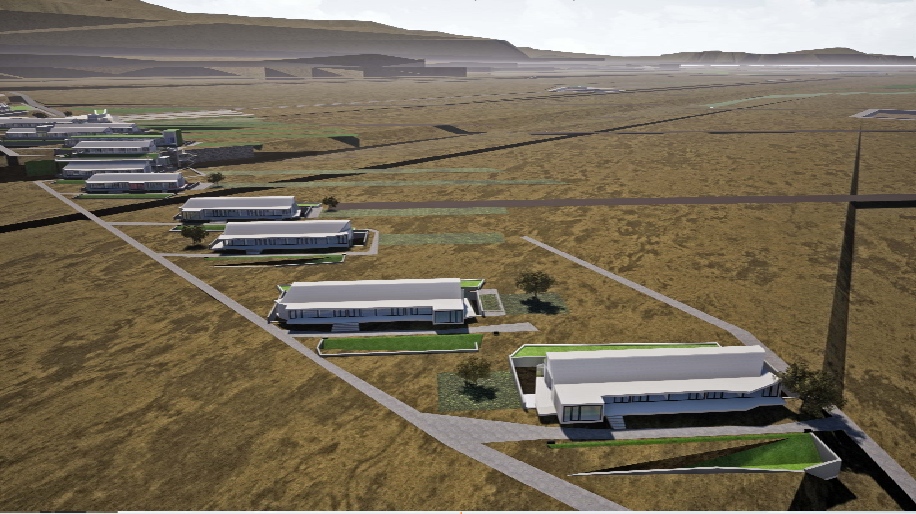


So, to realize the IMMENSITY of the territory, we dig up hollow spaces, where the viewer has to go down a few steps to that space to make them realize as they go down and up the immense PLACE

Not only will you notice when you go down and up, but the moment you go down and see the scale down, you'll have the confined space on your retina.



Community spaces to meet, sleep, research, rest, ...



Fog water / moisture collectors in night and day (winter)



Sensation of landscape. Drilled hole, the ground It's sculpture. CO2 collectors.



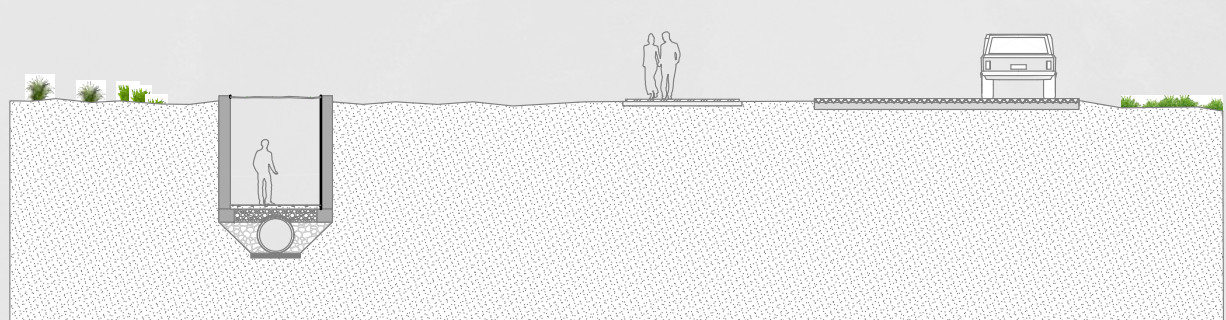
Cover emerging from the ground. Contemplation / Rest below



Natural firewalls. Every 6 months make firewalls in 10-meter strips every 200 m.

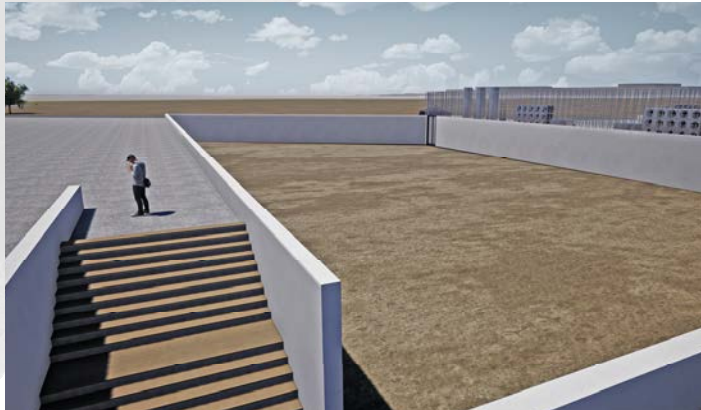


Three types of routes, through a gallery, pedestrian over the territory or by road access (road)



The gallery is not only a tour but also transfers energy and telecommunications.

Descent towards feeling. Descent to understand the Full Scale



These trees shall be inserted in the area in a timely and localized manner. Especially in the SCGs and at certain points in the project. These trees are located in the southern part of Nevada and do not require a large irrigation.

Scale 1/12000

- Natural Firewall
- New road
- Pedestrian Zone
- Open underground gallery
- Semi-private road
- Existing external road
- Space Control Gaps
- Community spaces
- Community linked crops
- Green area
- Water Footprints
- Water ponds
- BRS
- New BRS
- Solar panels on crops
- Solar panels on the ground
- Geyser zone
- ViewPoint
- Crops
- Contemplation
- Parking
- Community Center
- Community kitchen
- Parasol

