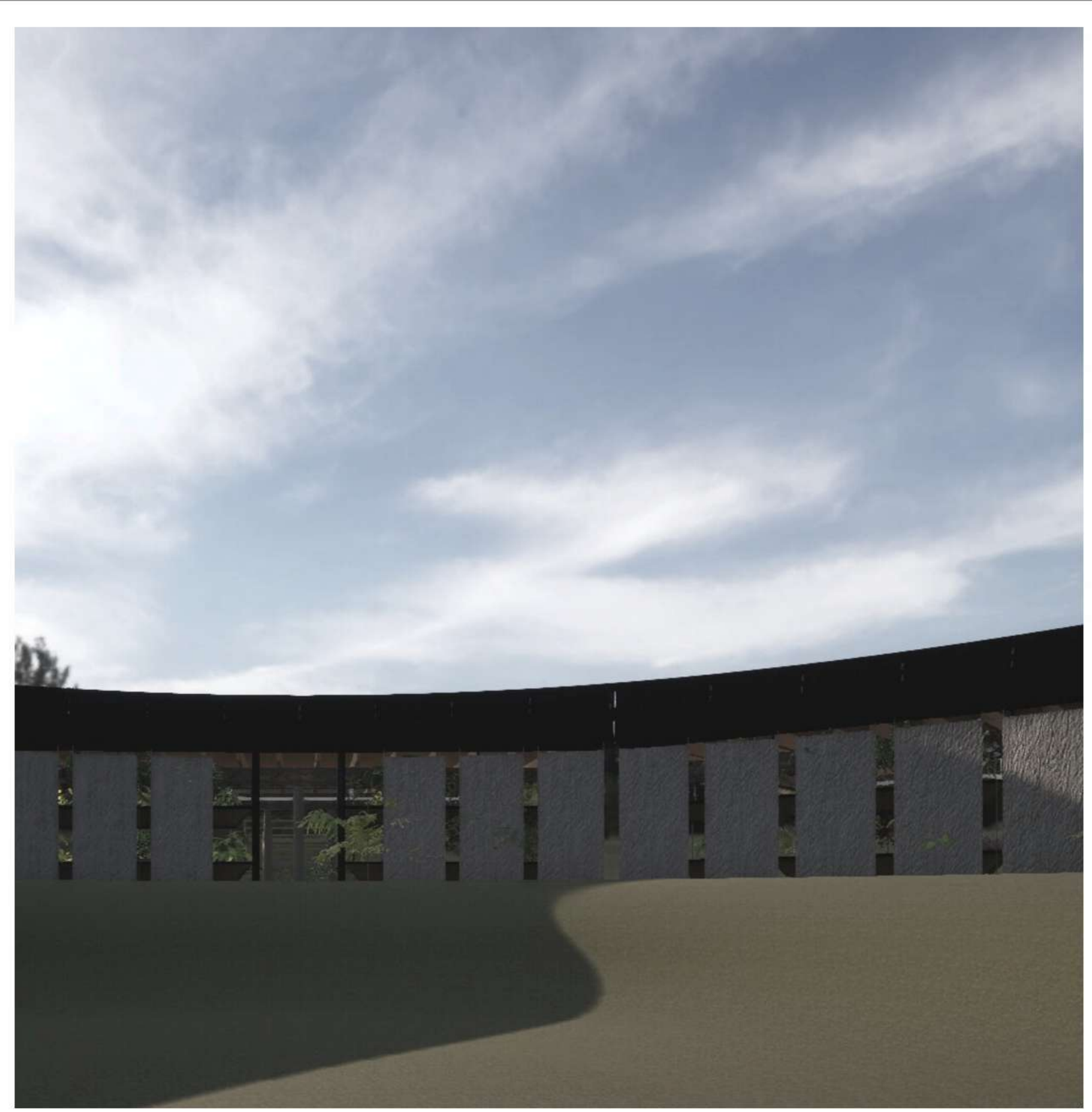
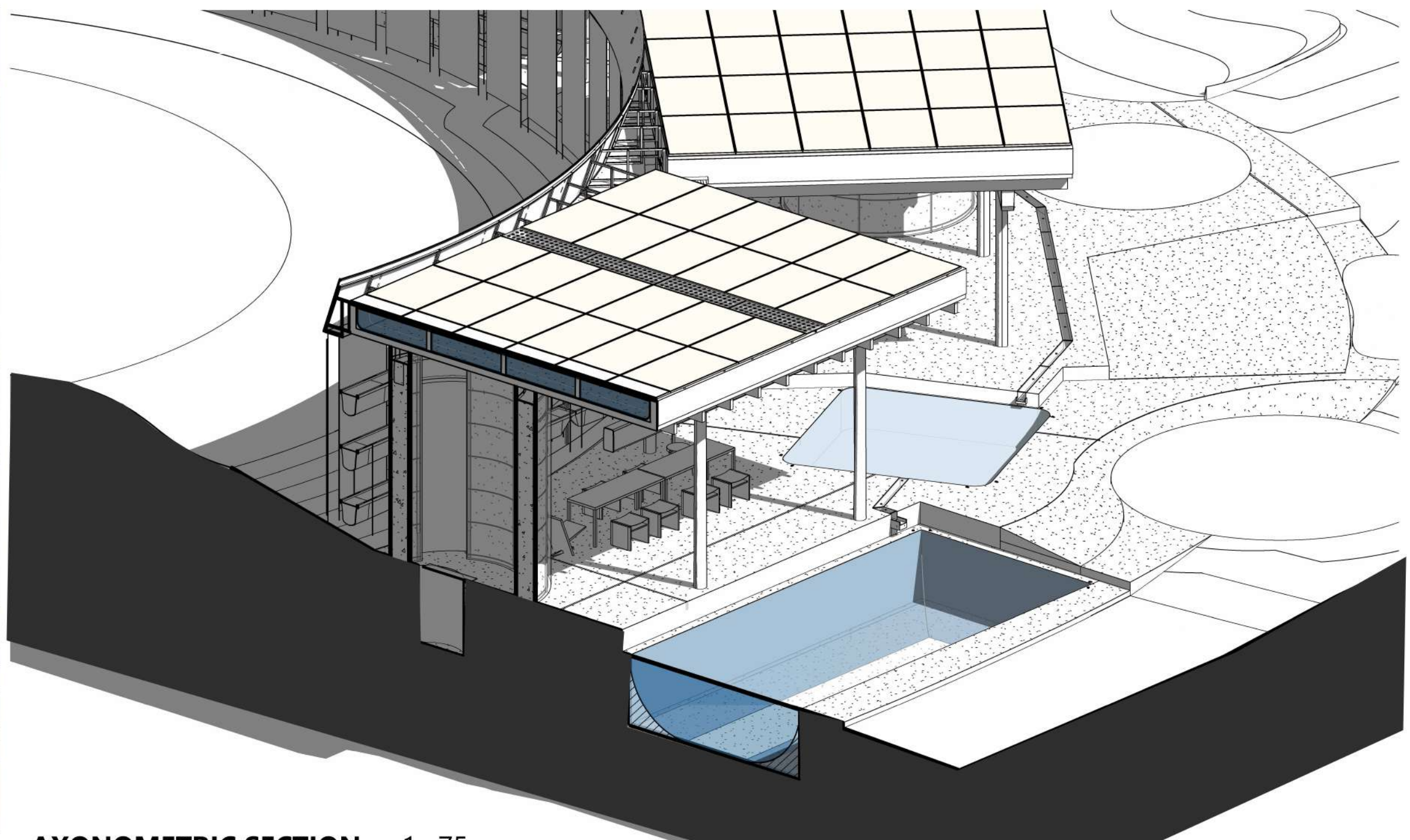


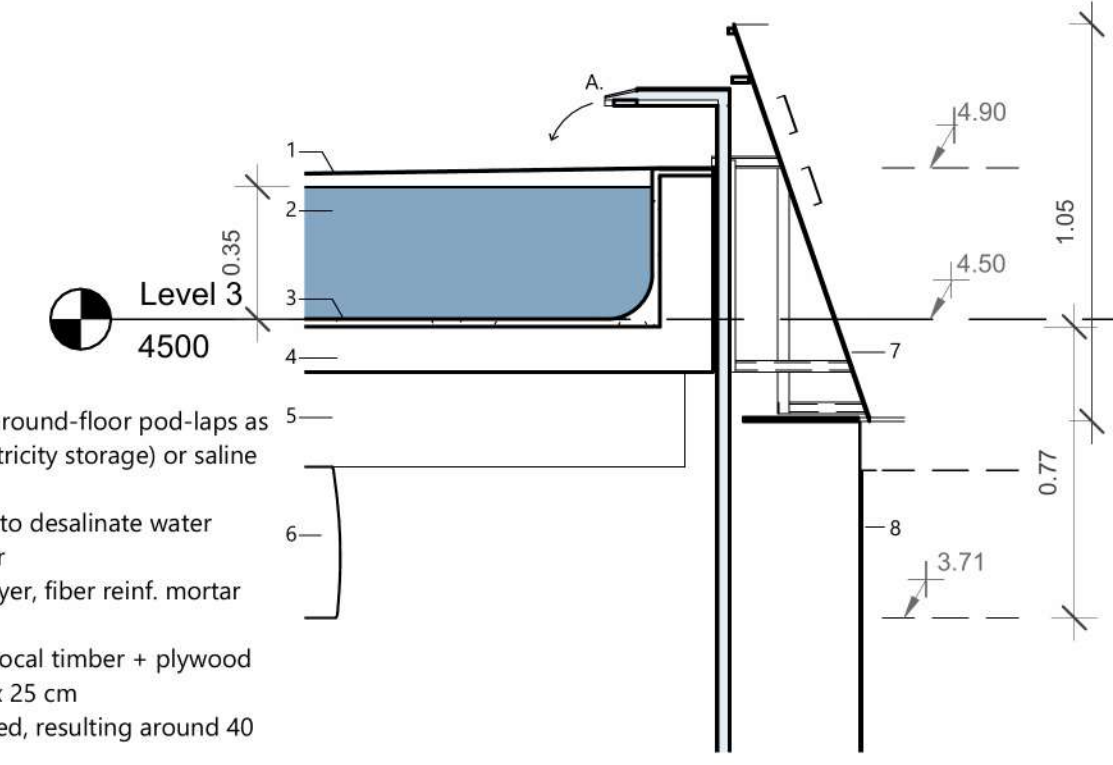
GROUND FLOOR sc 1 : 150



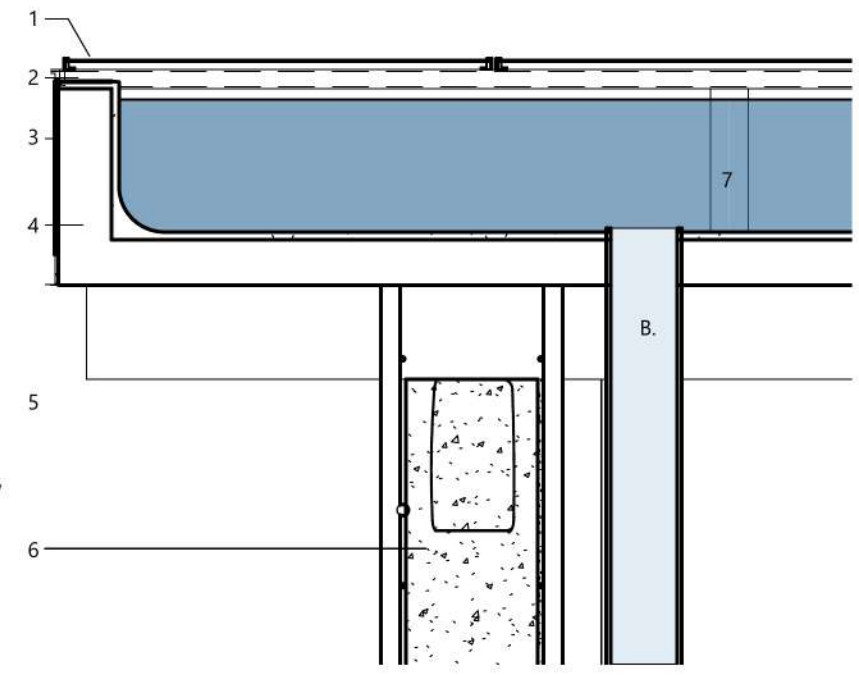
- REFERENCES**
Storage ground floor:
- 1: six of 23 m³
 - 2: two of 7 m³
 - 3: SE before Village, of 42 m³
 - 4: eventually, desalinated water, of 10 m³
 - 5: eventually, at the core, 200 m³ aprox.



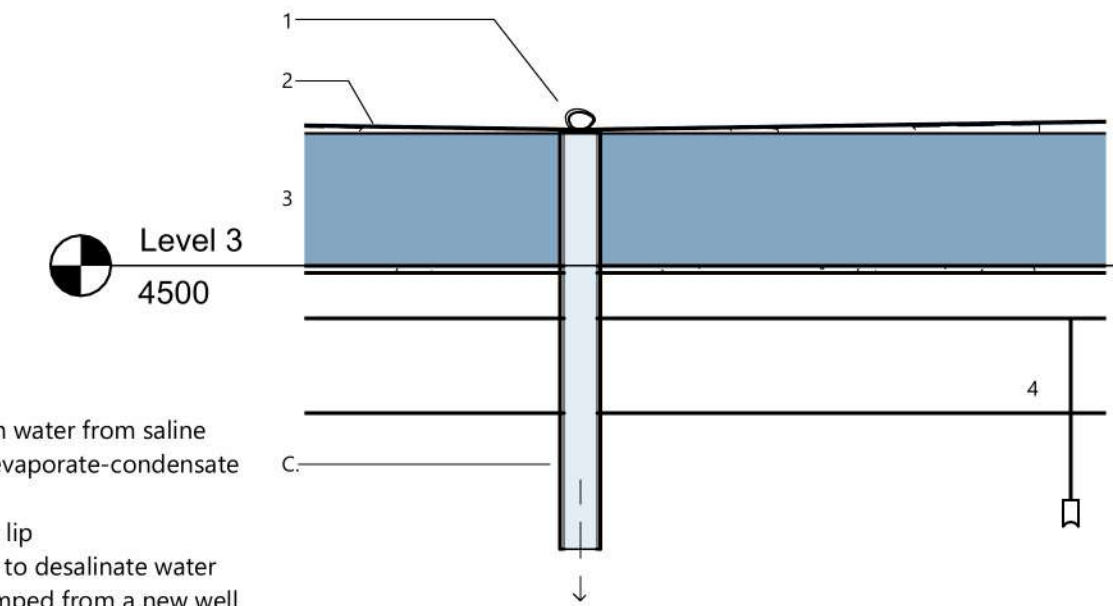
AXONOMETRIC SECTION sc 1 : 75



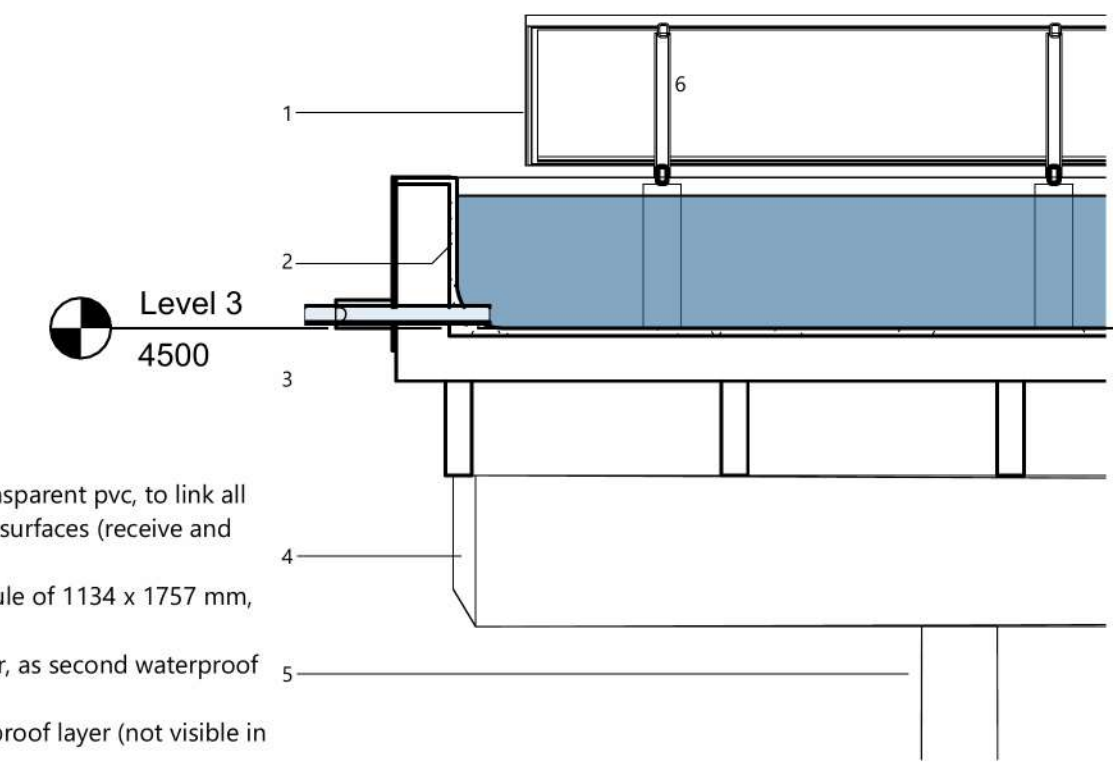
DETAIL A sc 1 : 20



DETAIL B sc 1 : 20



DETAIL C sc 1 : 20



DETAIL D sc 1 : 20

These details intend to illustrate how a timber slab with mortar and plastic film, could host water. Also, to illustrate where the main critical points with the pipes would be. The 4 types here in these details are the main ones. The other connection elements are the runnels, at the ground floor. They can be seen at left.