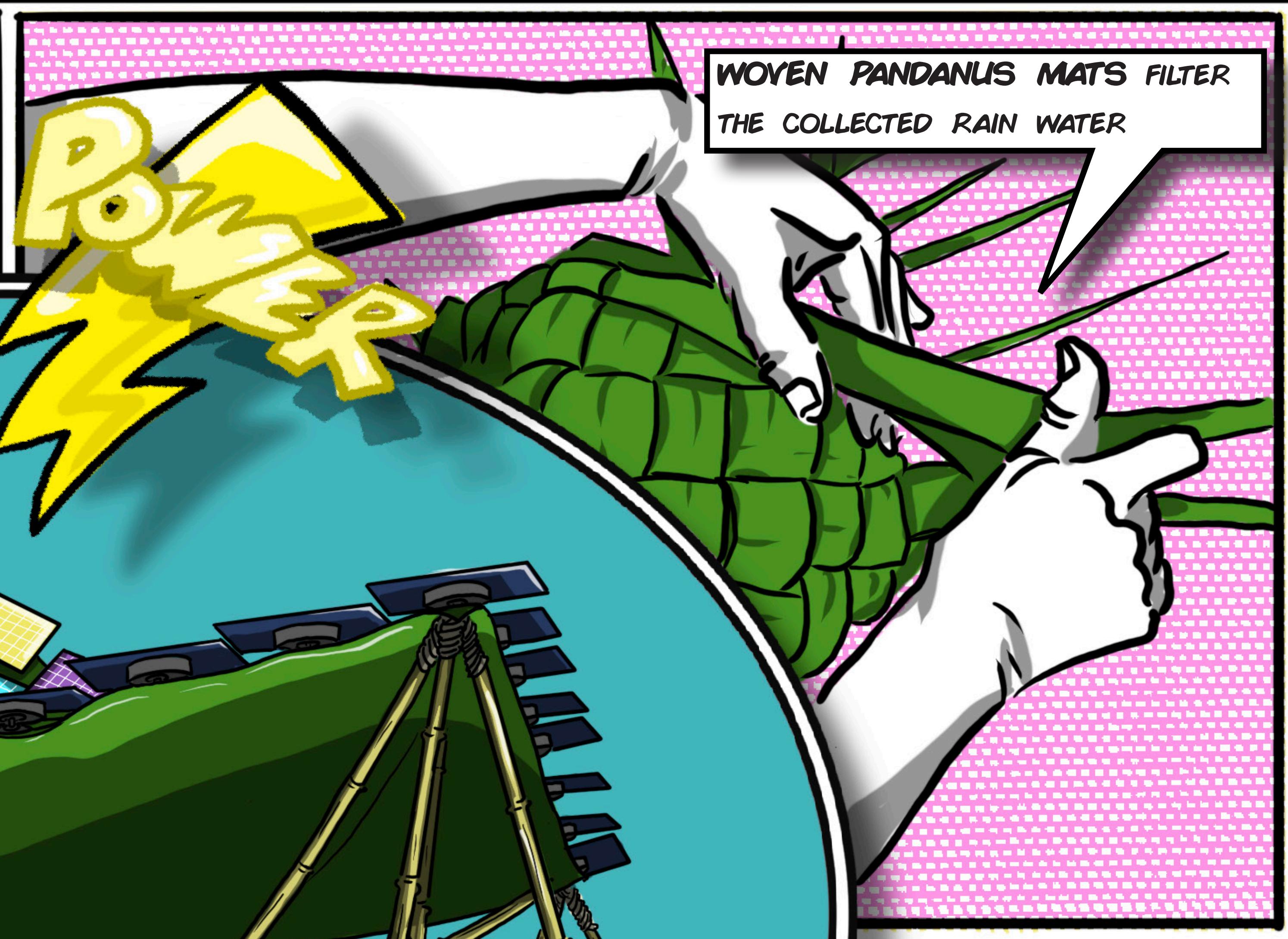
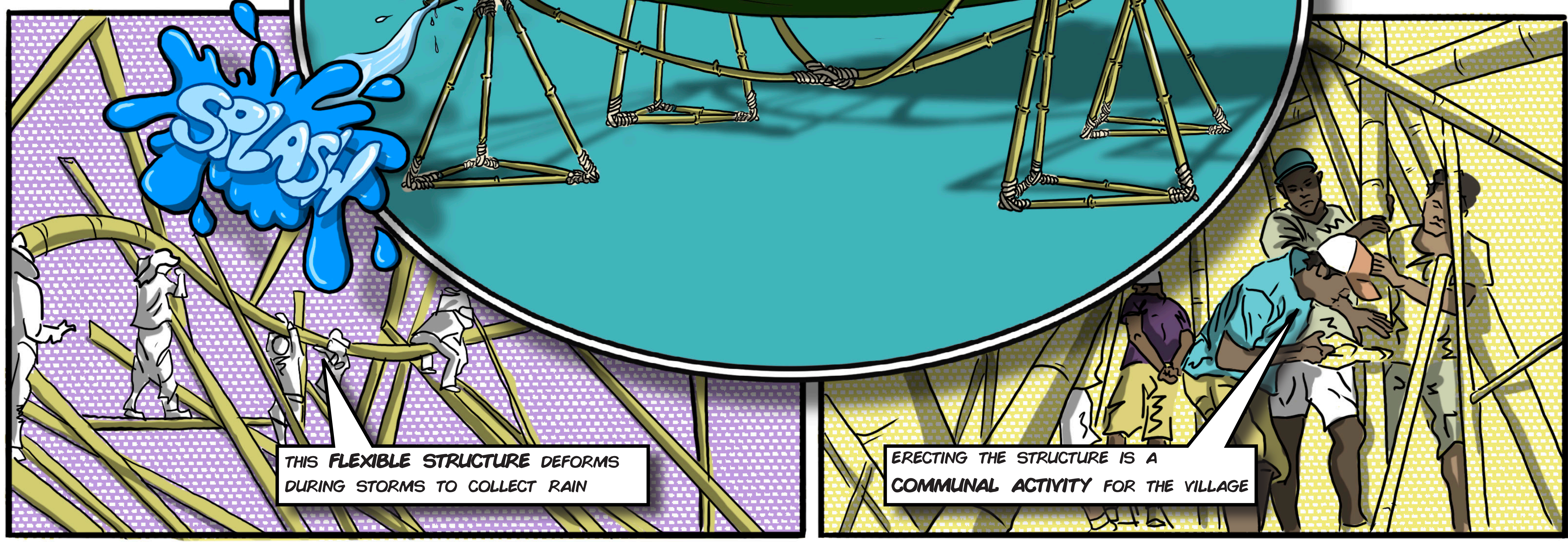


I'M CARVING THE **BAMBOO** STRUTS WE COLLECTED ON THE ISLAND SO THEY CAN BE JOINED TO MAKE THE SUPPORTING STRUCTURE



WOVEN **PANDANUS** MATS FILTER THE COLLECTED RAIN WATER



**POWER**

**SPLASH**

THIS **FLEXIBLE** STRUCTURE DEFORMS DURING STORMS TO COLLECT RAIN

ERECTING THE STRUCTURE IS A **COMMUNAL** ACTIVITY FOR THE VILLAGE