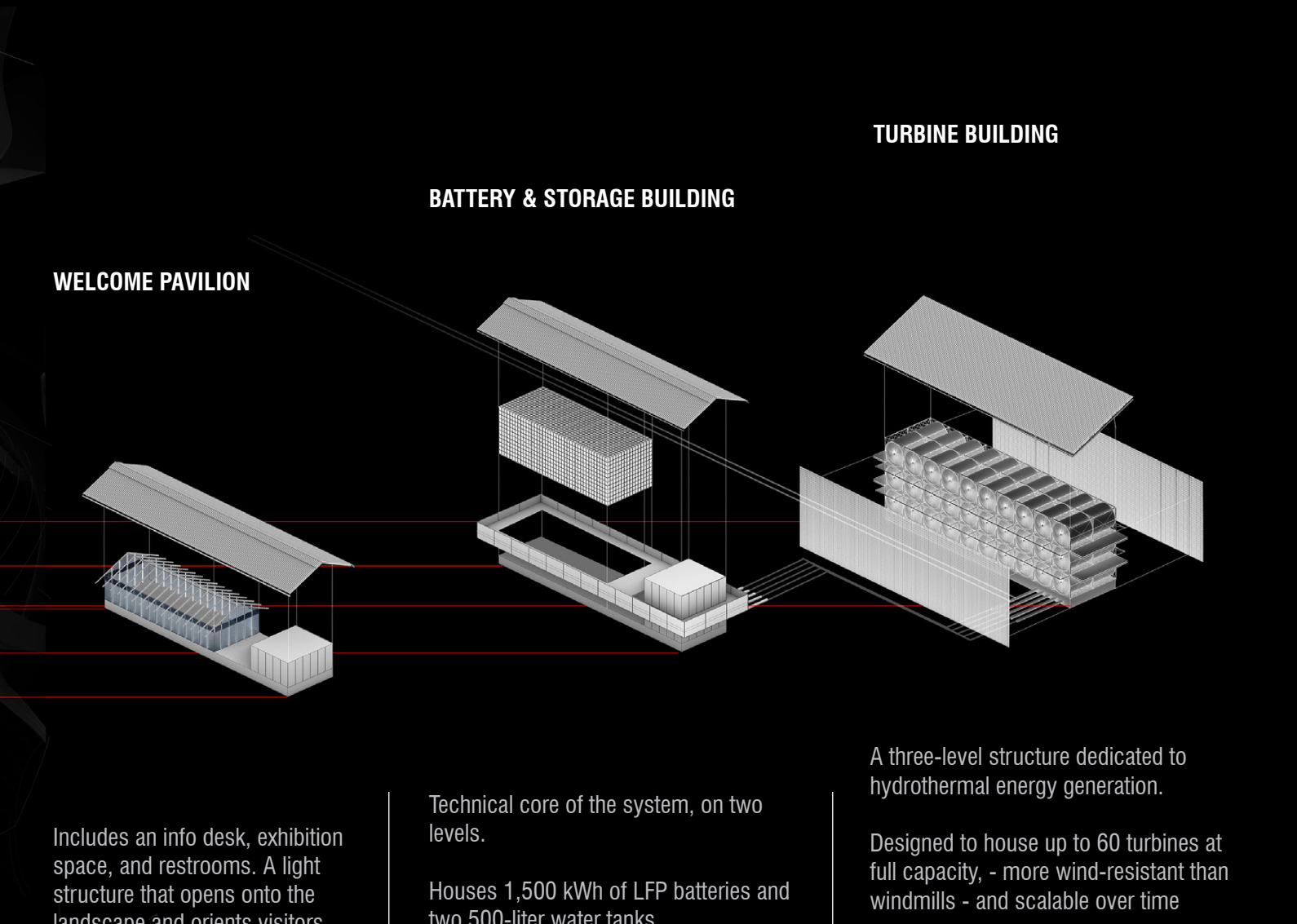


AXONOMETRY - ENERGY GENERATION AND RECEPTION CORE



WELCOME PAVILION

Includes an info desk, exhibition space, and restrooms. A light structure that opens onto the landscape and orients visitors.

The multipurpose hall also supports educational activities and group visits.

BATTERY & STORAGE BUILDING

Technical core of the system, on two levels.

Houses 1,500 kWh of LFP batteries and two 500-liter water tanks.

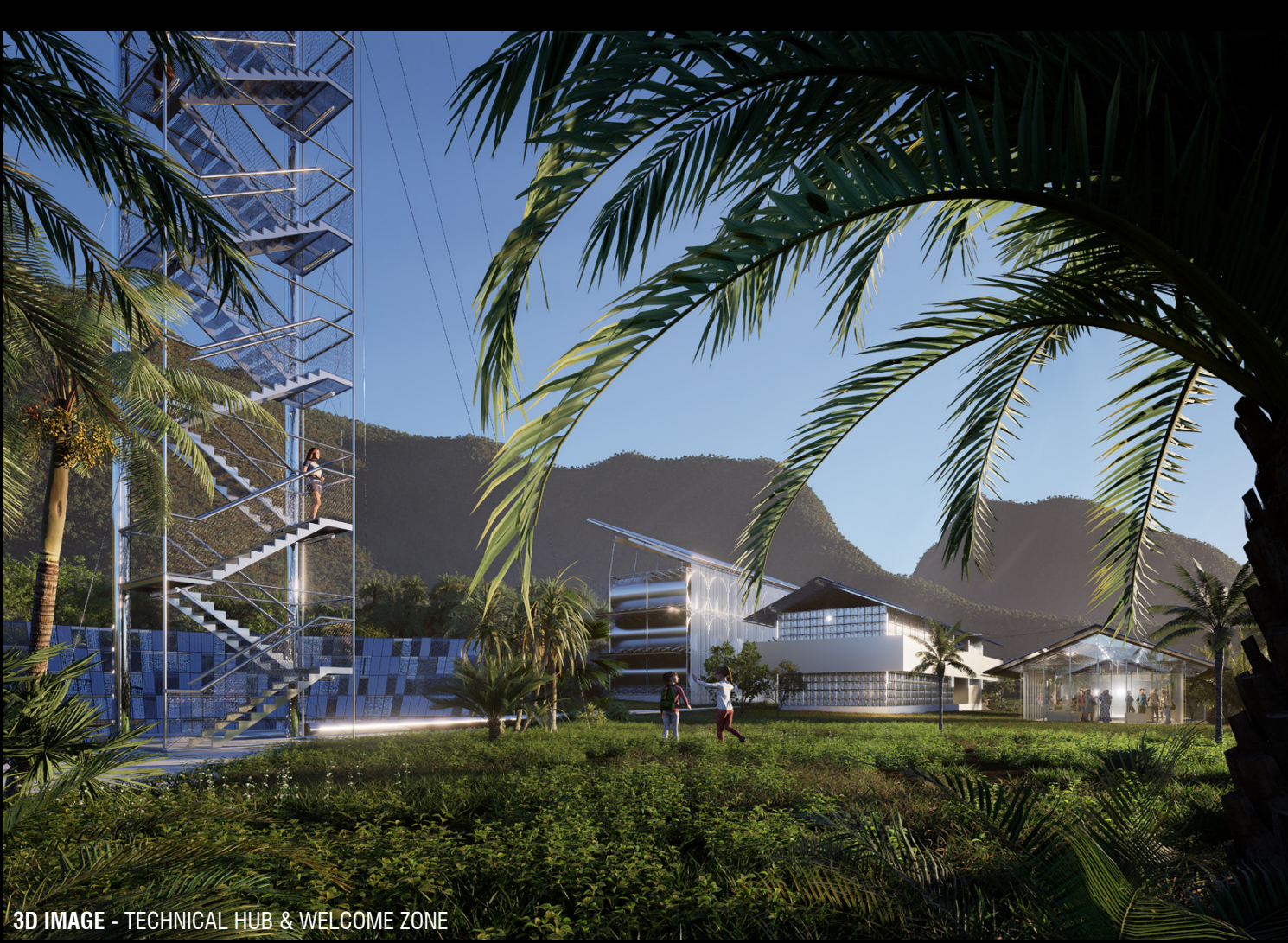
Ensures energy storage and thermal water management for continuous operation.

TURBINE BUILDING

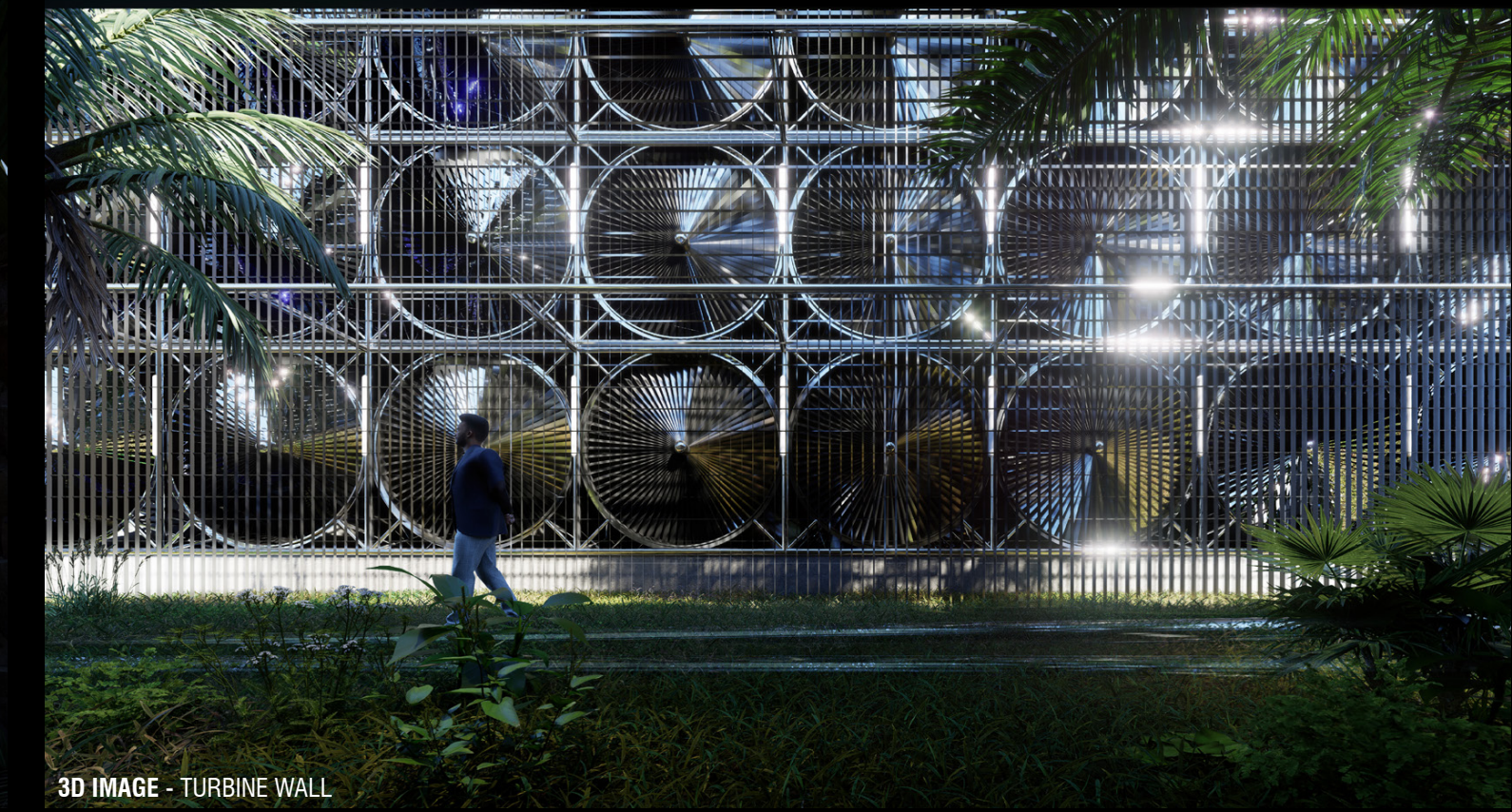
A three-level structure dedicated to hydrothermal energy generation.

Designed to house up to 60 turbines at full capacity, - more wind-resistant than windmills - and scalable over time.

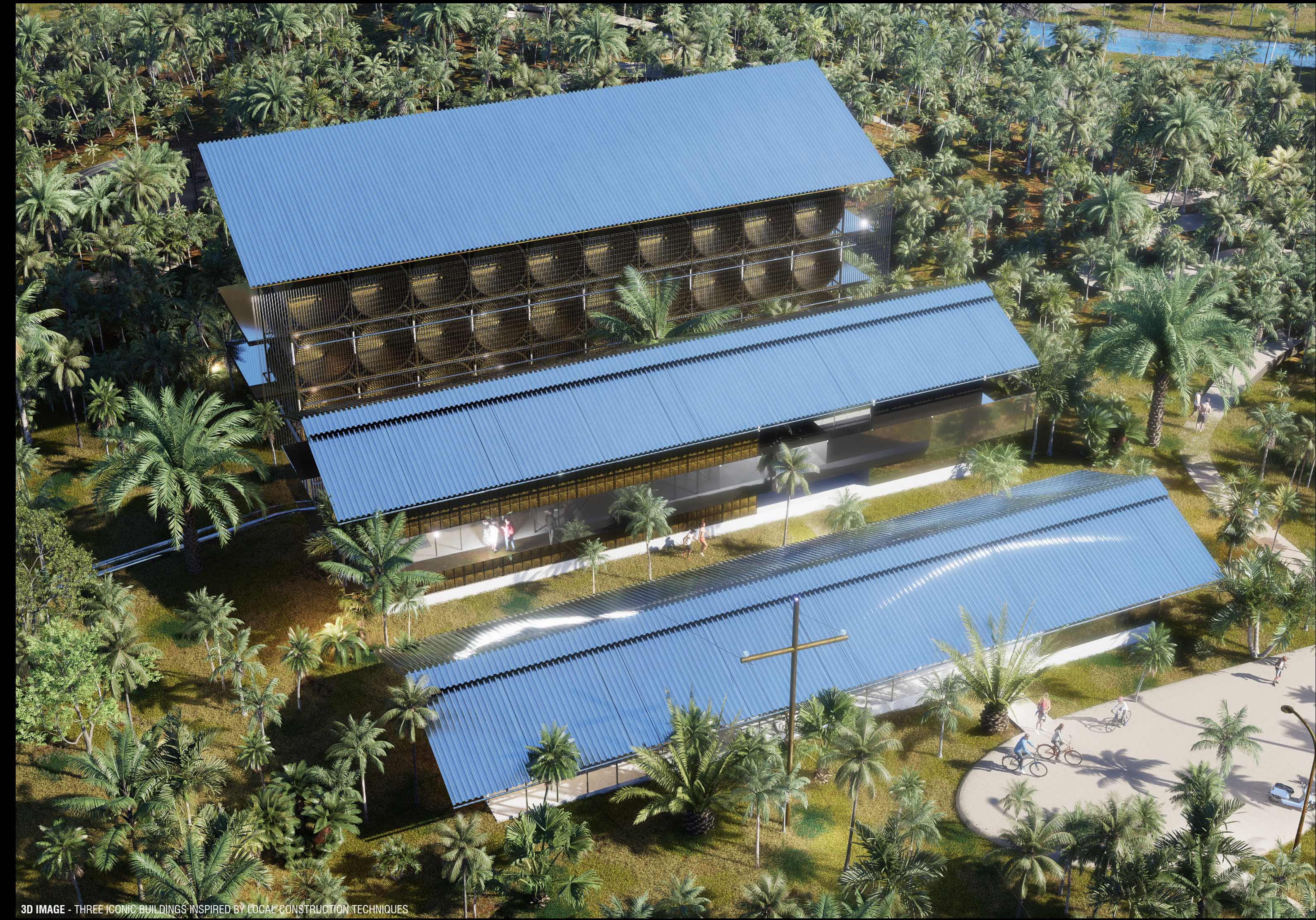
It efficiently converts heated water into electricity, supplying power to the entire site while remaining adaptable to future needs.



3D IMAGE - TECHNICAL HUB & WELCOME ZONE



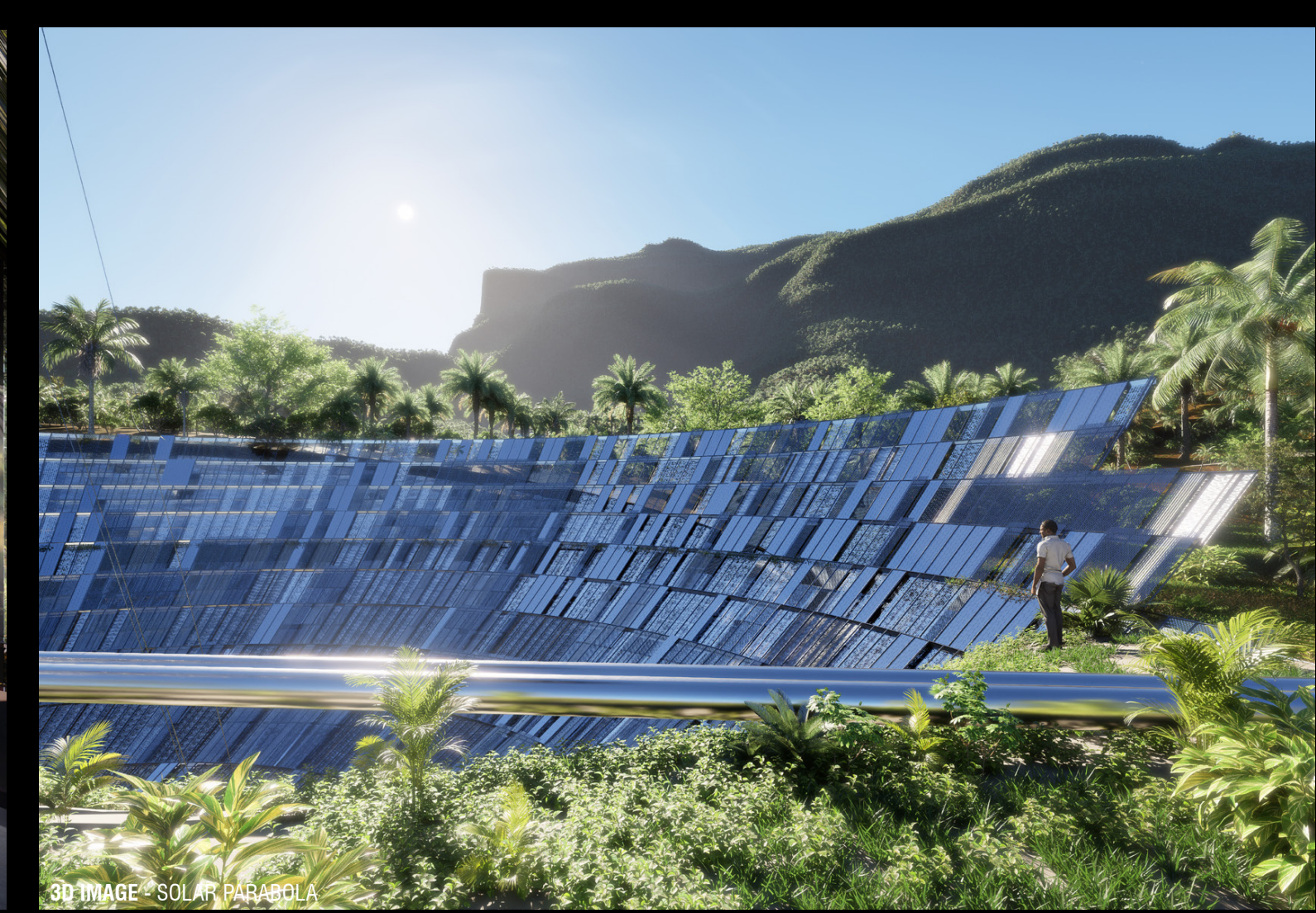
3D IMAGE - TURBINE WALL



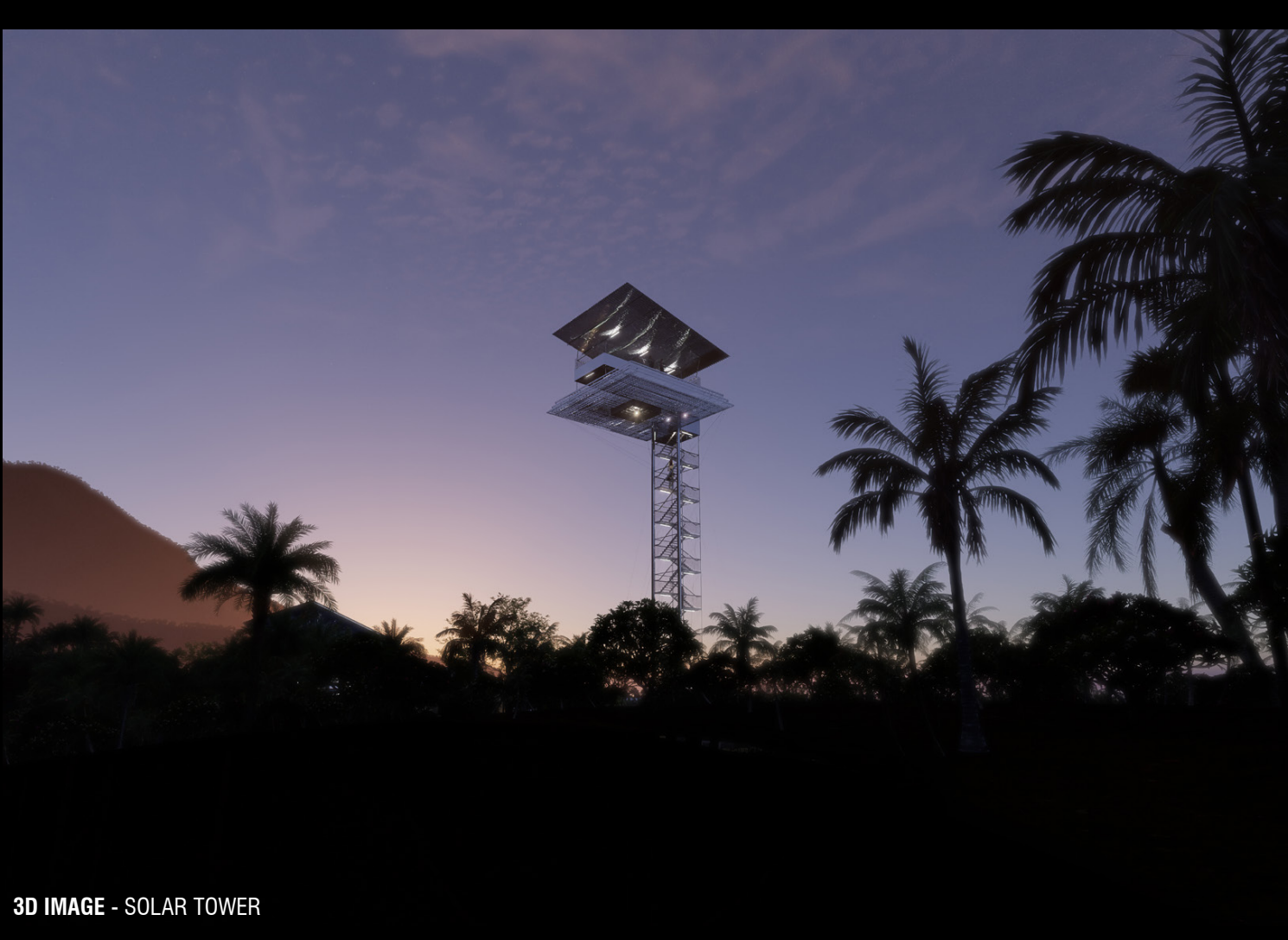
3D IMAGE - THREE ICONIC BUILDINGS INSPIRED BY LOCAL CONSTRUCTION TECHNIQUES



3D IMAGE - WELCOME AREA



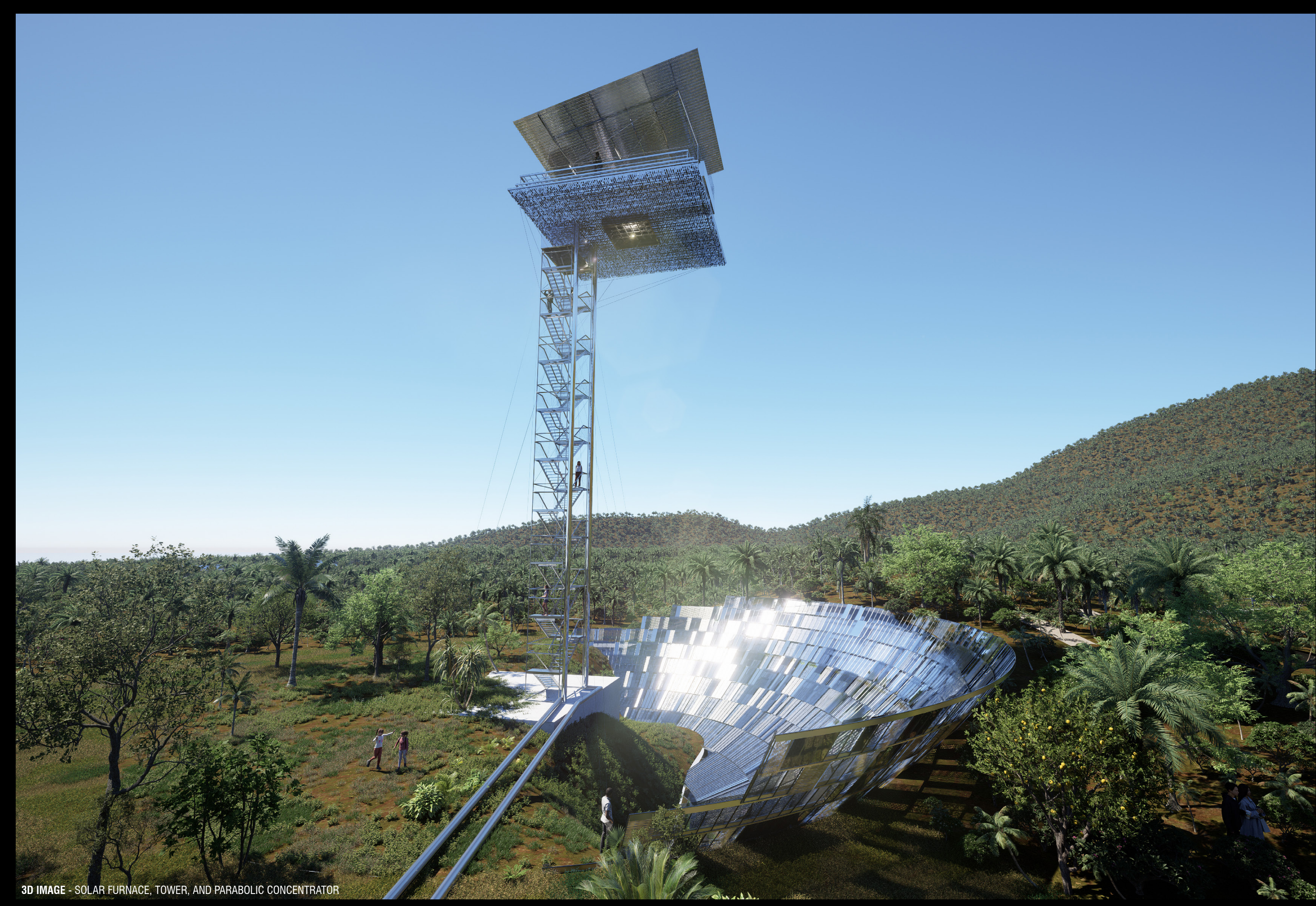
3D IMAGE - SOLAR PARABOLA



3D IMAGE - SOLAR TOWER



3D IMAGE - SOLAR TOWER & CAPTURE CELL



3D IMAGE - SOLAR FURNACE, TOWER, AND PARABOLIC CONCENTRATOR