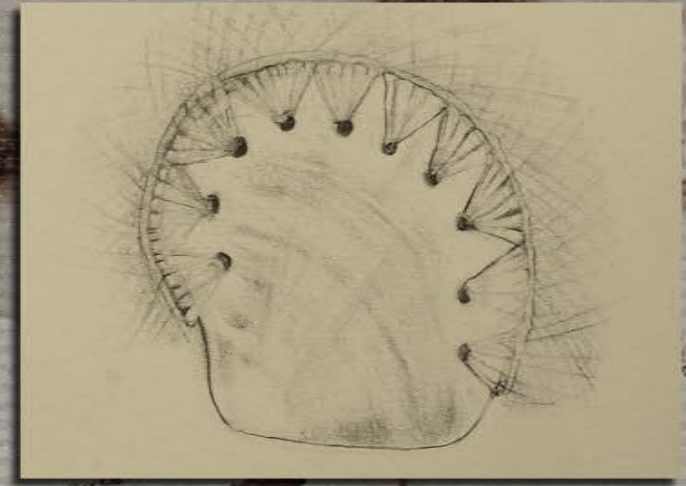


BRAIDED NATURE



Nightcafe_ Upscaled AI generated prototype, retrieved 19th of April 2025



Fan, 1992. Puku shell, coconut palm fibre, 1.2 x 26.5 x 17.5 cm. UBC Museum of Anthropology, Museum of Anthropology at the University of British Columbia. Artstor. <https://www.jstor.org/stable/community.12714678>

YASAWA ISLANDS NAVITI LAGI FIJI 2025

This installation is conceived to mirror Naviti Island's ecological rhythms such as night, day and the tides, ensuring that its presence supports rather than disrupts the natural environment. Use of the space as a source of water will ensure its ongoing value and longevity for future generations to come. This project will ensure that Marou's knowledge systems, their ways of tending, building, and honouring place. Treasures of the islands historical narrative will be placed on permanent display in close vicinity or within the generator.

The installation is on a gently sloped site with soil and natural flora surrounding it and integrated garden park dedicated to identifying the botanicals of the site. The piece will evoke a sense of harmony with site. Access to the site and surrounding gardens will require ongoing maintenance. The gardens park will be a creative retreat and will highlight the deeply connected elements of place to the sensitive ecosystems of the island.