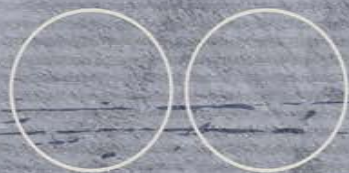


The brief is inspired by a pre-1927 Fijian basket found with a small black and red feather. The basket holds significant value in Fijian tradition, with red feathers denoting chiefly status and spiritual authority or *mana*. Further, it represents ecological knowledge among Pacific Island societies and the practice of exchange. The idea is to make the basket and place it at the site of the land art generator, where the water flow will carry the basket through the structure.



NAVITI, YASAWA ISLANDS

MAROU VILLAGE



Archivarius Updated AI generated prototype Nishicafe - retrieved 19th of April 2025

Set on a gently sloped site on Naviti Island, the installation will rise from the landscape with the grace of Vatu Rua mountain. The generative feature will invite wind and water to pass through the wall facade, becoming a living symbol of renewal. Located close to the Vatu Rua site and between the mountain and ocean, the structure will serve ceremonial and everyday purposes, offering a place of reflection and learning. The resulting work does not impose but listens, evoking the unseen systems of wind, light, tide, and story that sustain the island's life.

During daylight hours, discrete solar panels, integrated within the wall's transparent segments made of Photoelectric glass tiles, will harvest energy from the sun. As night falls, the wall glows quietly with low-intensity, warm-spectrum LED lights that trace the water's path across the surface. These lights, powered by the integrated solar system, operate on a timer to respect nocturnal wildlife cycles, with shielding to reduce light spill and preserve the island's dark skies. The lighting sequence will be designed to align with tidal rhythms, reinforcing the installation's connection to the ocean and its gifts.

BRAIDED NATURE LAGI FIJI 2025