

Marou Totem Landscape

LAGI 2025 | land art for a changing climate

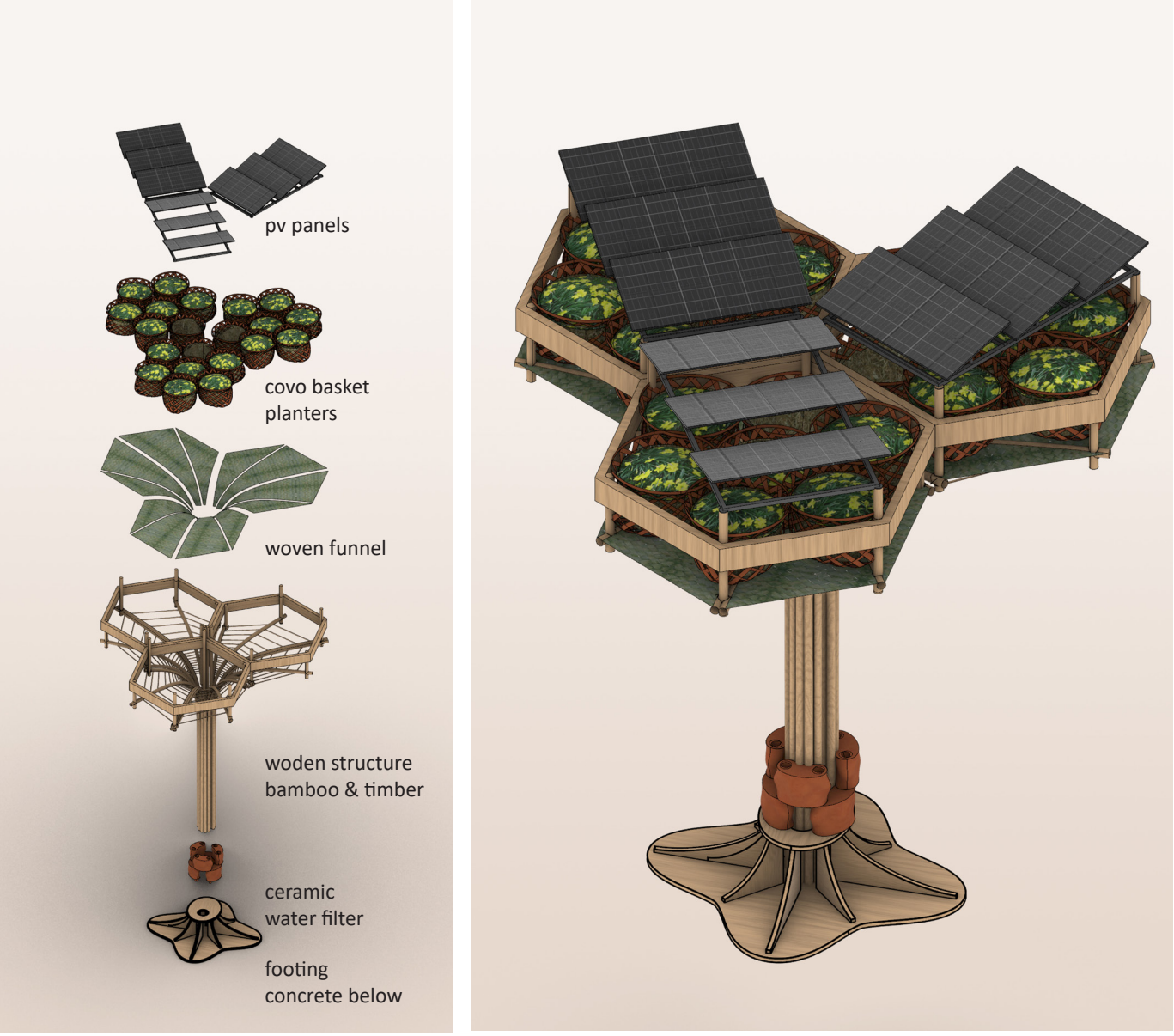
01. INSPIRATION & OVERALL STRATEGY



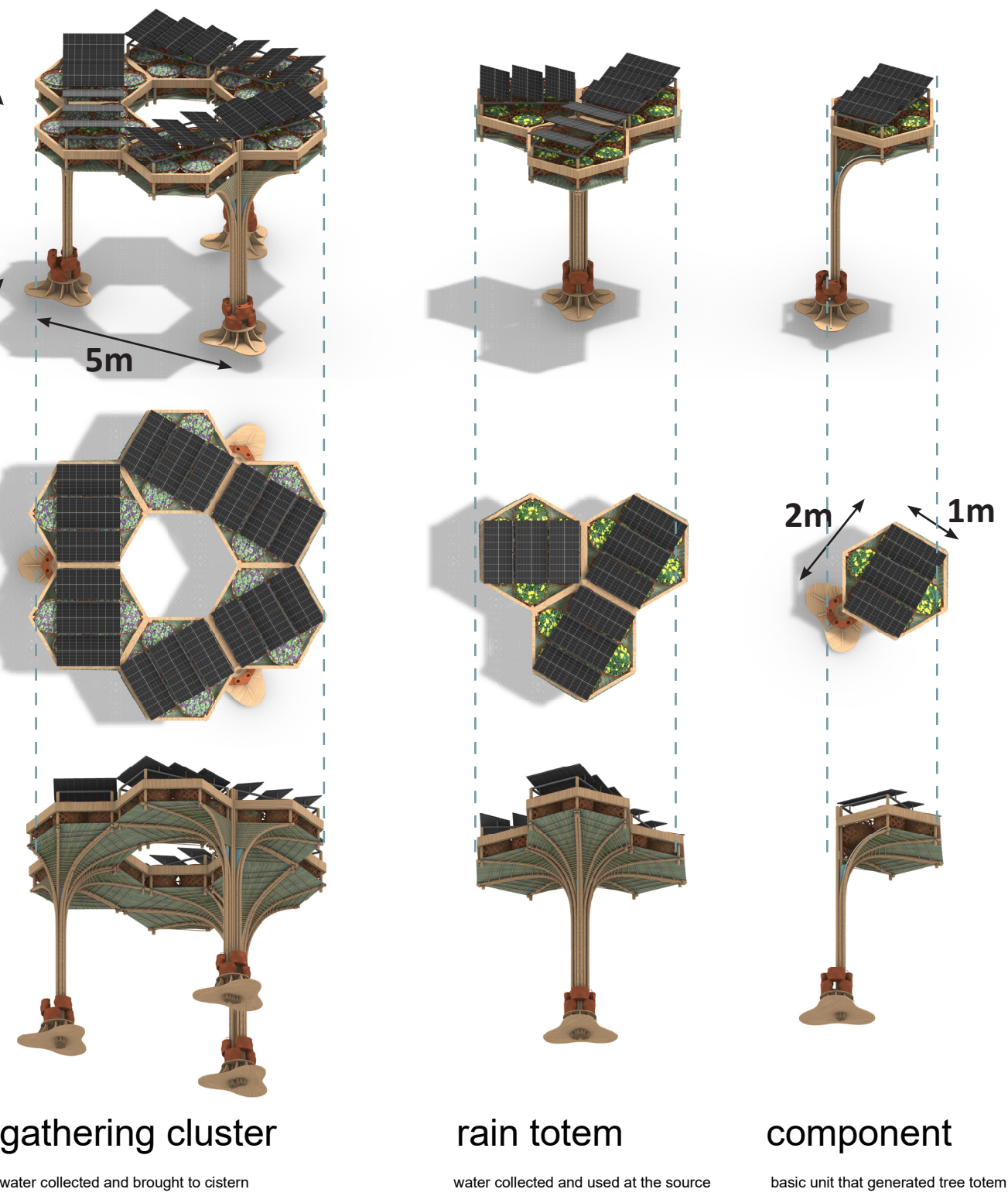
co-designed and co-built with local knowledge, human and more-than-human

The project is conceived as a collaborative one with the people of Marou: a blend of indigenous techniques and locally sourced natural materials, creating structures that honor the cultural identity of the community and its unique surroundings. It is inspired by plants and insects that collect water in harsh environments to create innovative solutions, as well as the rich tradition of regenerative craft-making with materials from the land.

solar/ rain totem

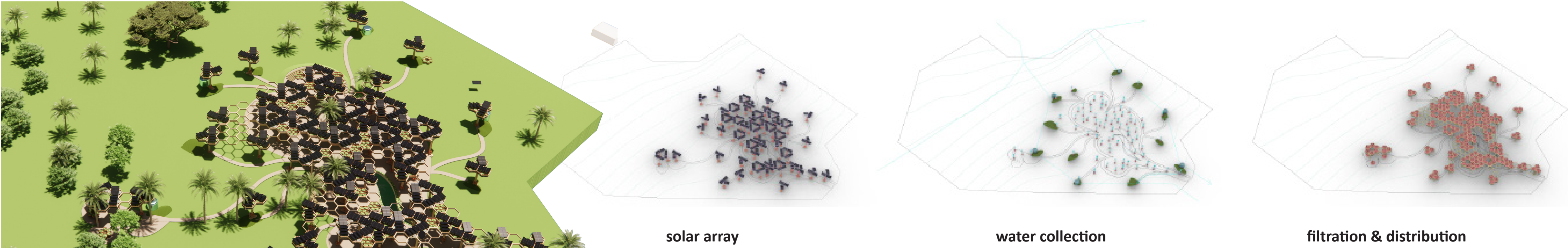


formation of cluster typologies



view of proposal in site

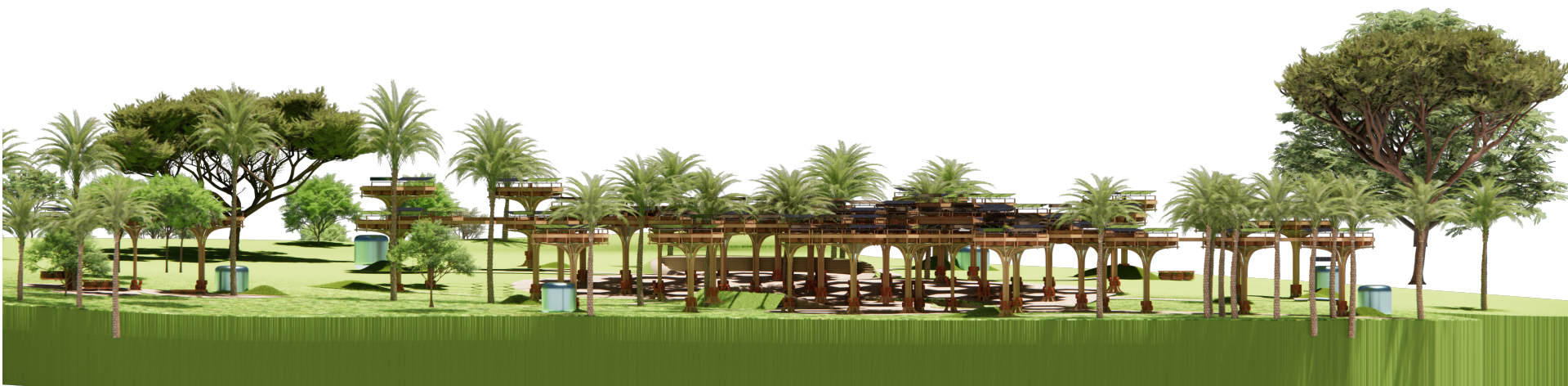
PATTERN OF GROWTH



overall strategy



totem variations



side views of the proposal

the structures follow the sloped topography and have a minimal impact



top view detail