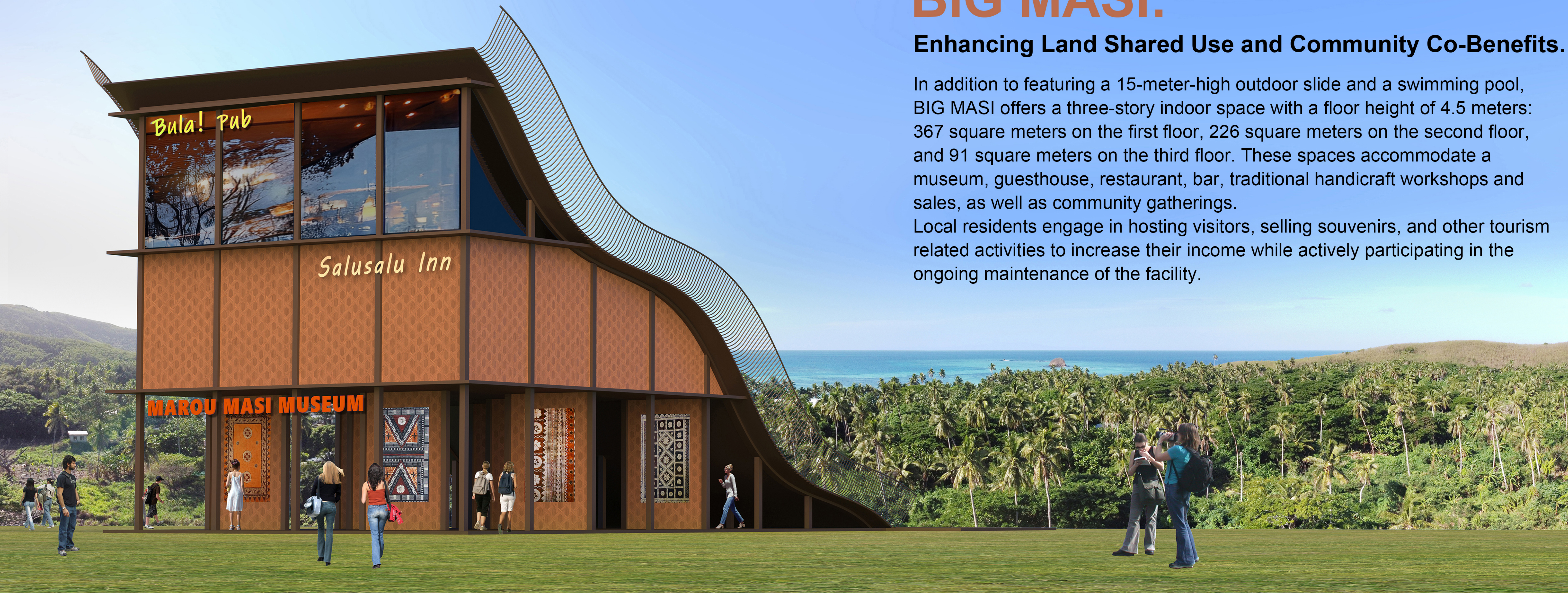


BIG MASI:

Enhancing Land Shared Use and Community Co-Benefits.

In addition to featuring a 15-meter-high outdoor slide and a swimming pool, BIG MASI offers a three-story indoor space with a floor height of 4.5 meters: 367 square meters on the first floor, 226 square meters on the second floor, and 91 square meters on the third floor. These spaces accommodate a museum, guesthouse, restaurant, bar, traditional handicraft workshops and sales, as well as community gatherings.

Local residents engage in hosting visitors, selling souvenirs, and other tourism related activities to increase their income while actively participating in the ongoing maintenance of the facility.



Like a vast MASI cloth spread over Marou Island, this unique and culturally rich Fijian architectural landmark will become a must-visit tourist destination, drawing visitors from around the world.

Tourists can explore the Masi Museum, where they can admire and purchase traditional Masi cloth artworks, stay in the on-site hotel, savor local cuisine, and experience the one-of-a-kind slide and pool that lead directly into the sea.

The interior partitions are crafted from bamboo and leaves. This flexible design enables the indoor space to seamlessly adapt to the community's needs, transforming from a spacious conference hall into multiple private rooms in just ten minutes.

