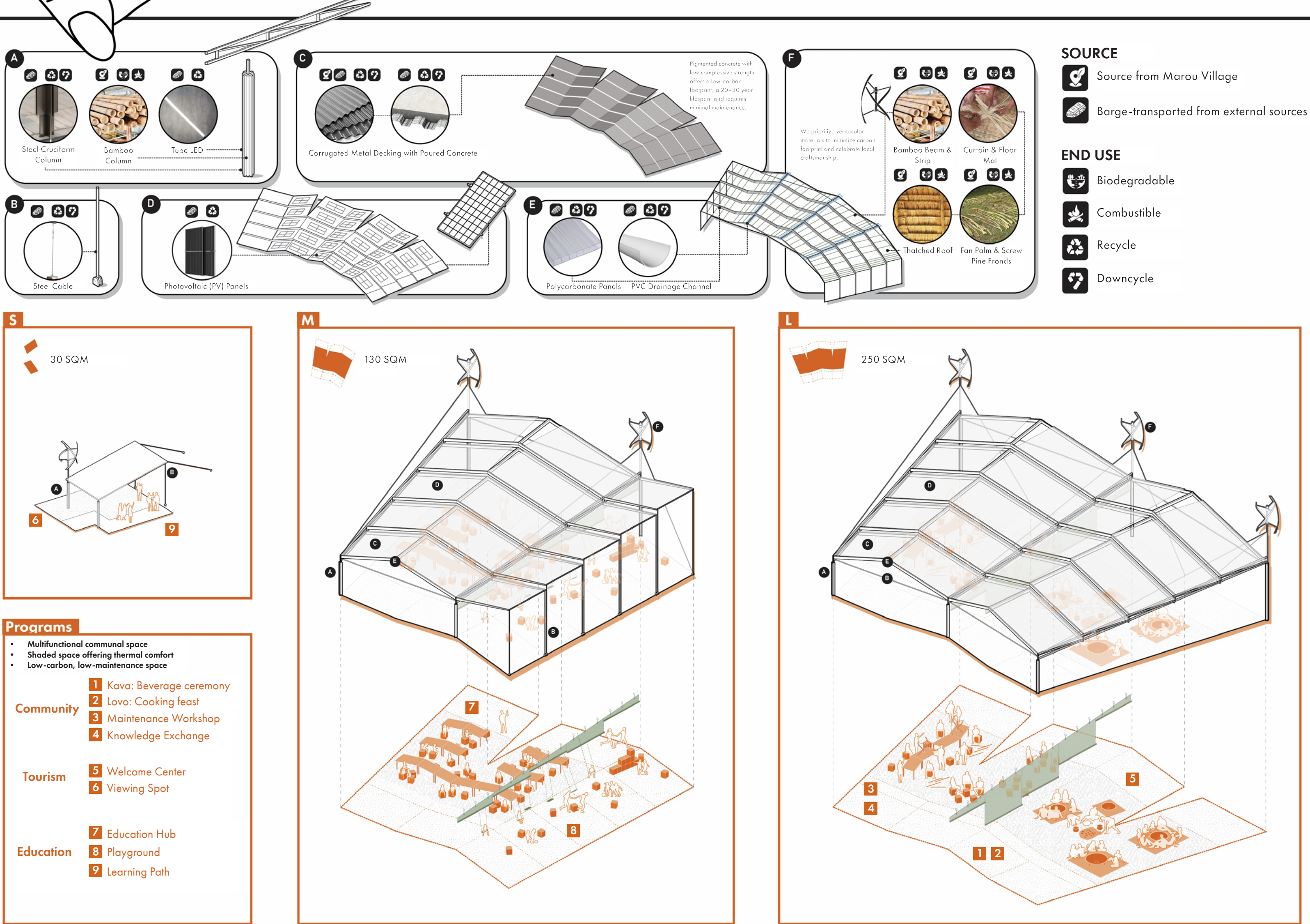


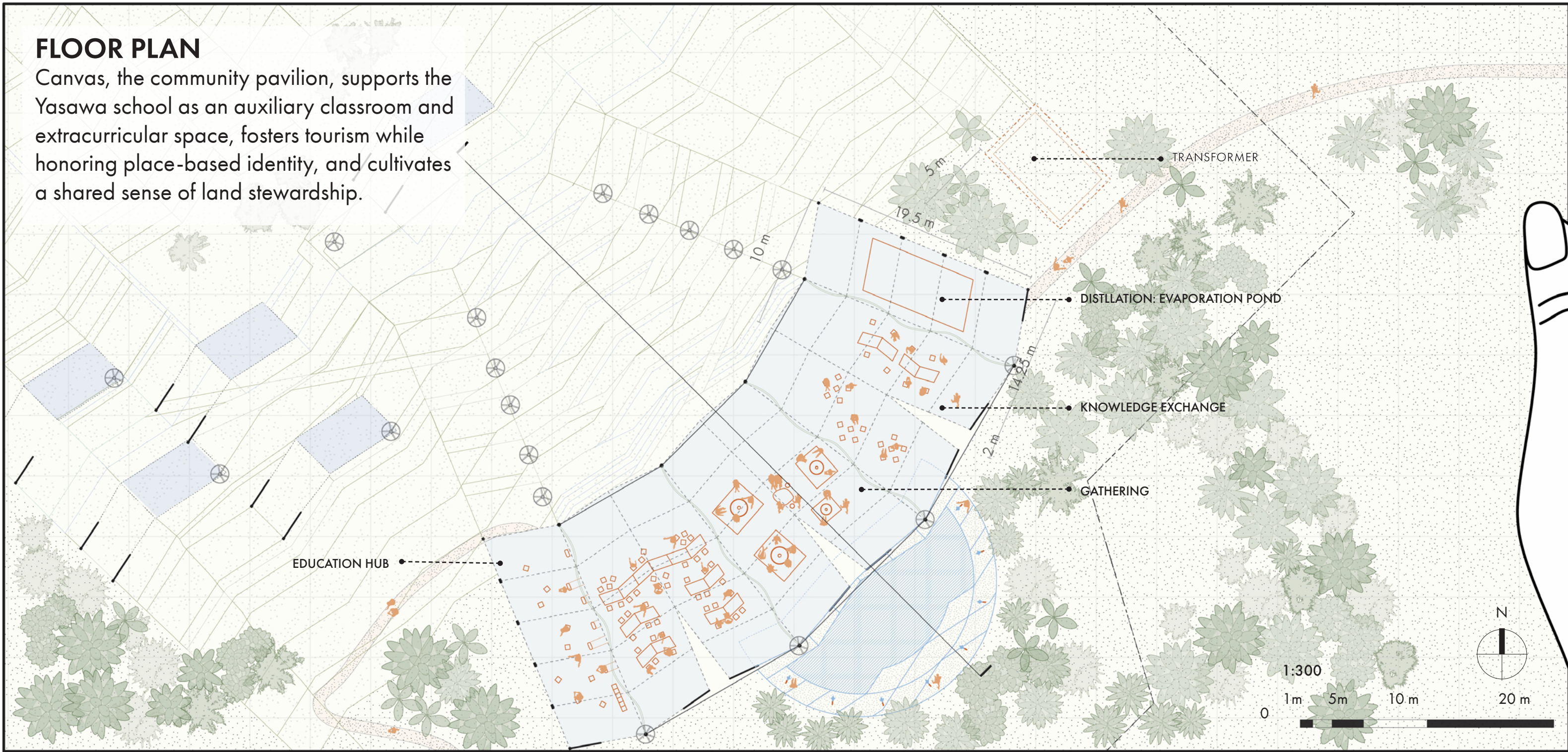
# THREADSCAPE

WEAVING MAROU VILLAGE'S ENERGY, WATER, AND COMMUNITY THREADS INTO AN ECOLOGICAL ARTWORK

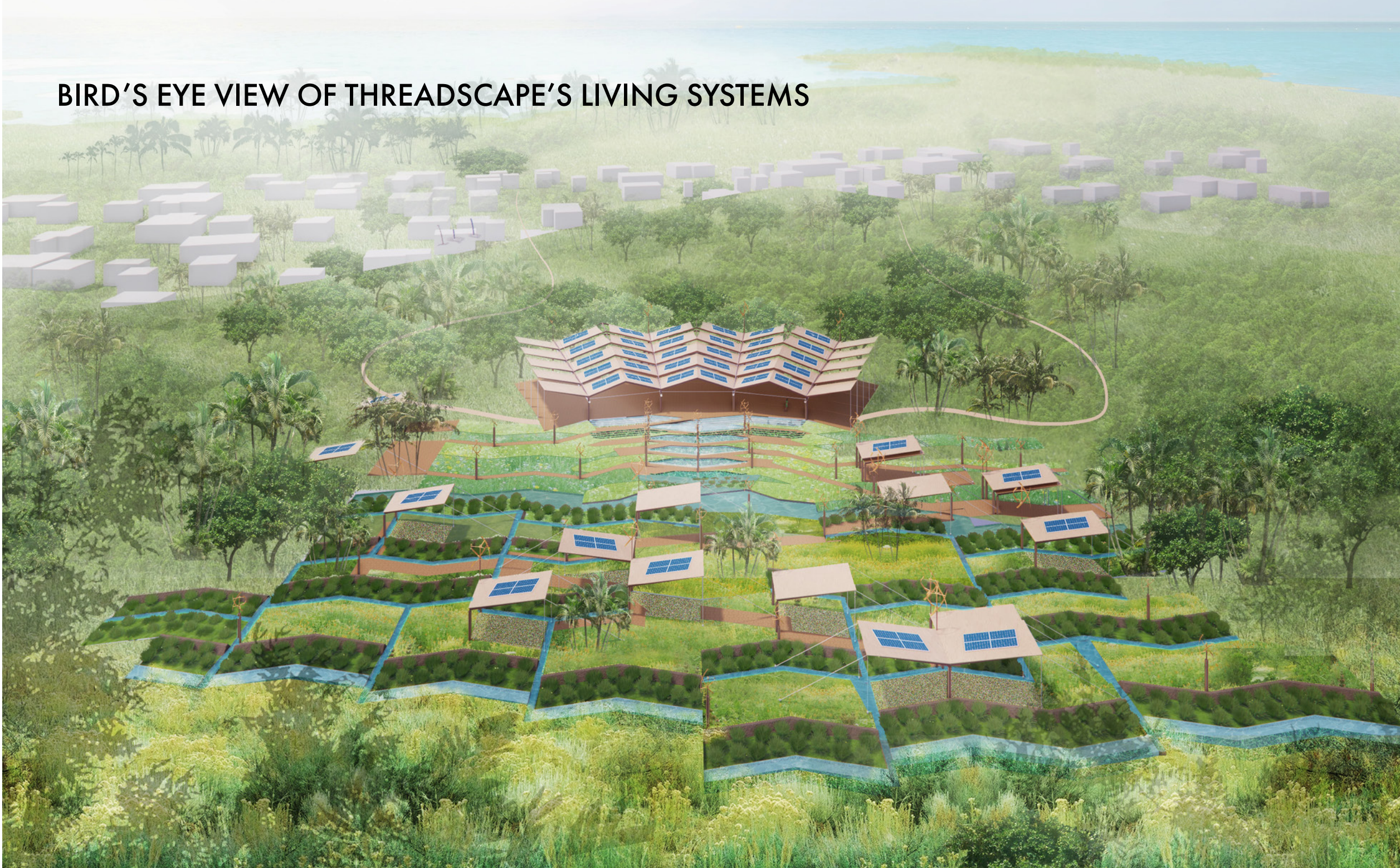


## FLOOR PLAN

Canvas, the community pavilion, supports the Yasawa school as an auxiliary classroom and extracurricular space, fosters tourism while honoring place-based identity, and cultivates a shared sense of land stewardship.



## BIRD'S EYE VIEW OF THREADSCAPE'S LIVING SYSTEMS



## THREADING THE LANDSCAPE INTO 'CANVAS'



## KAVA CEREMONY AT 'CANVAS' - THE COMMUNITY PAVILION

