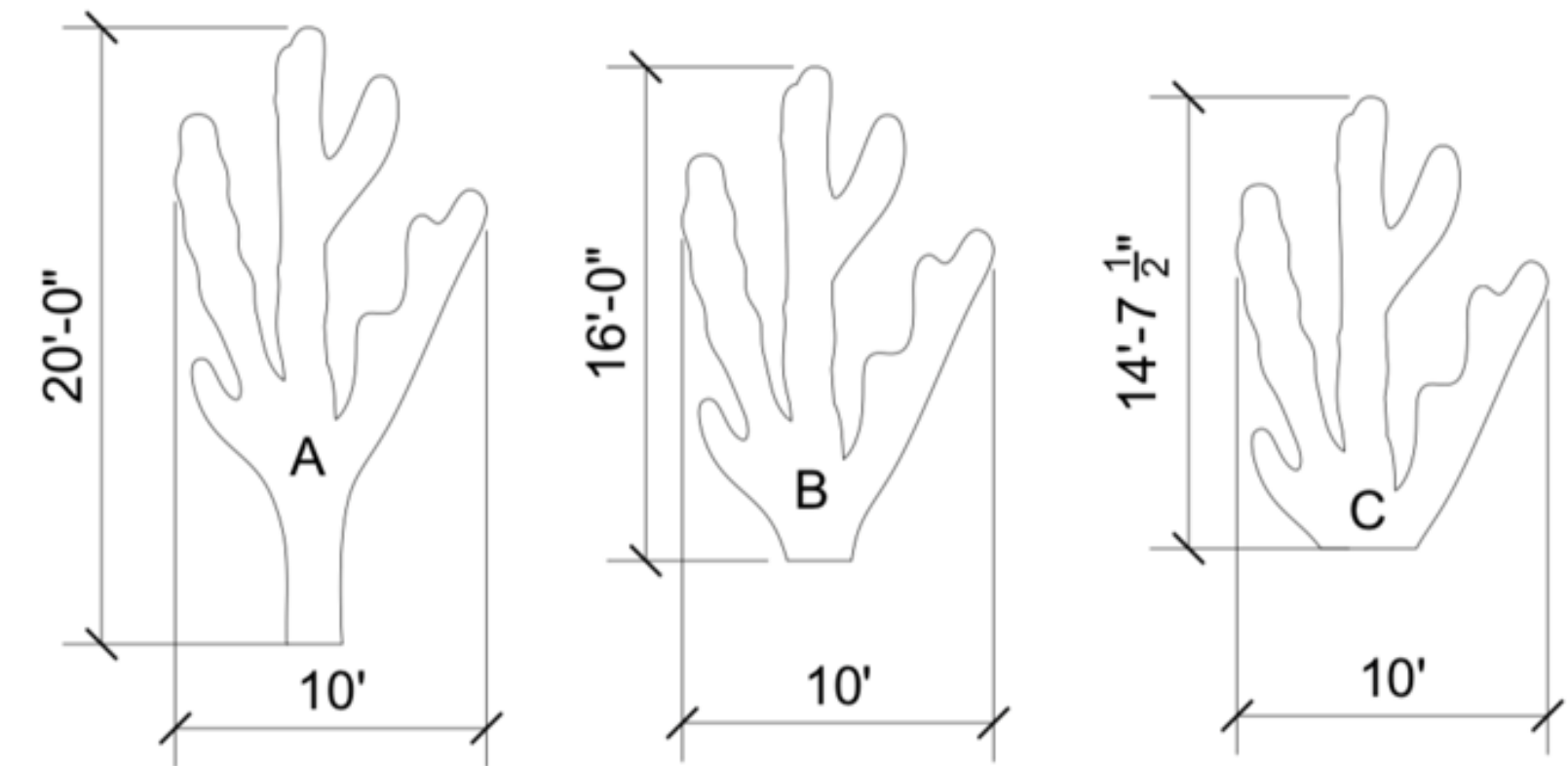


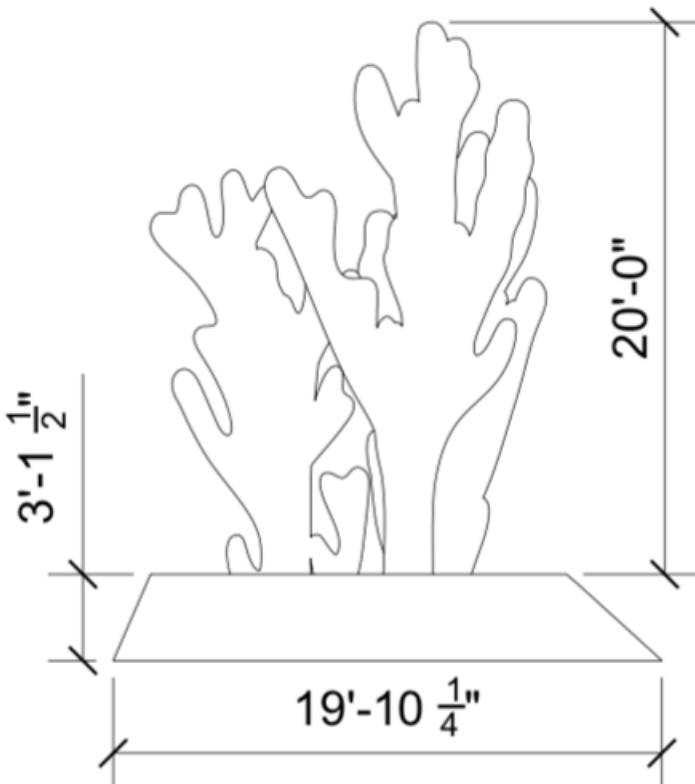
Corals

Front View

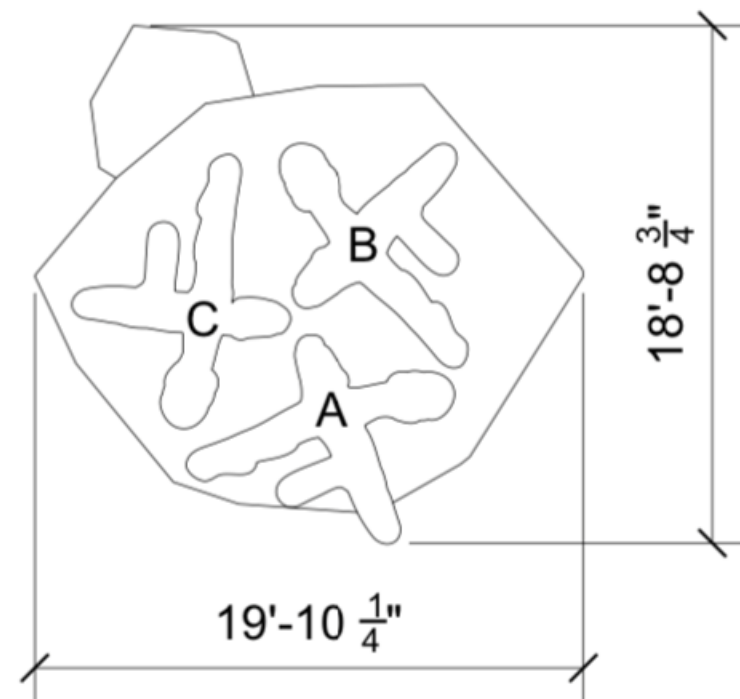


Sculpture

Front View

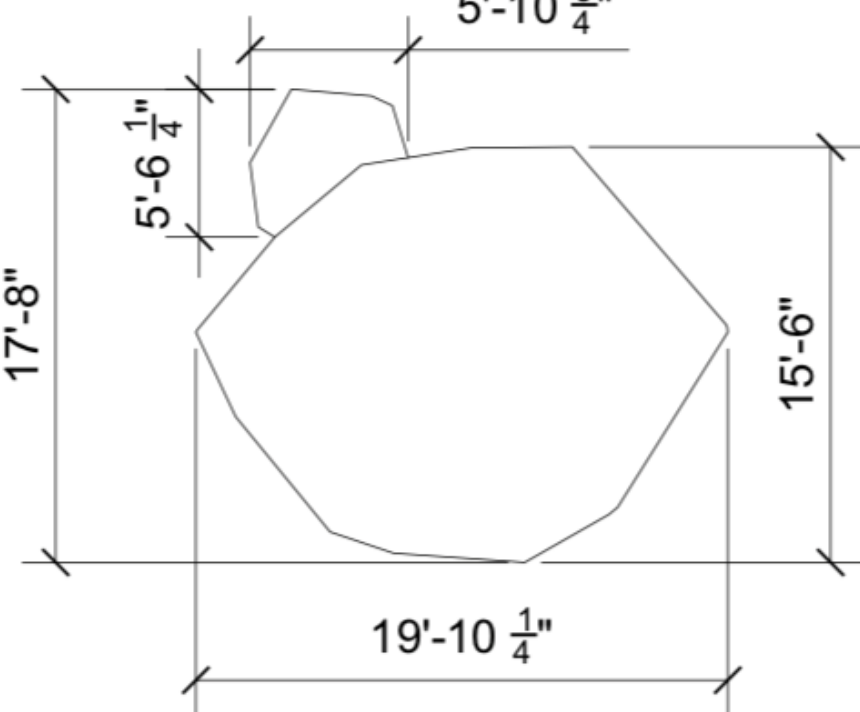


Top View

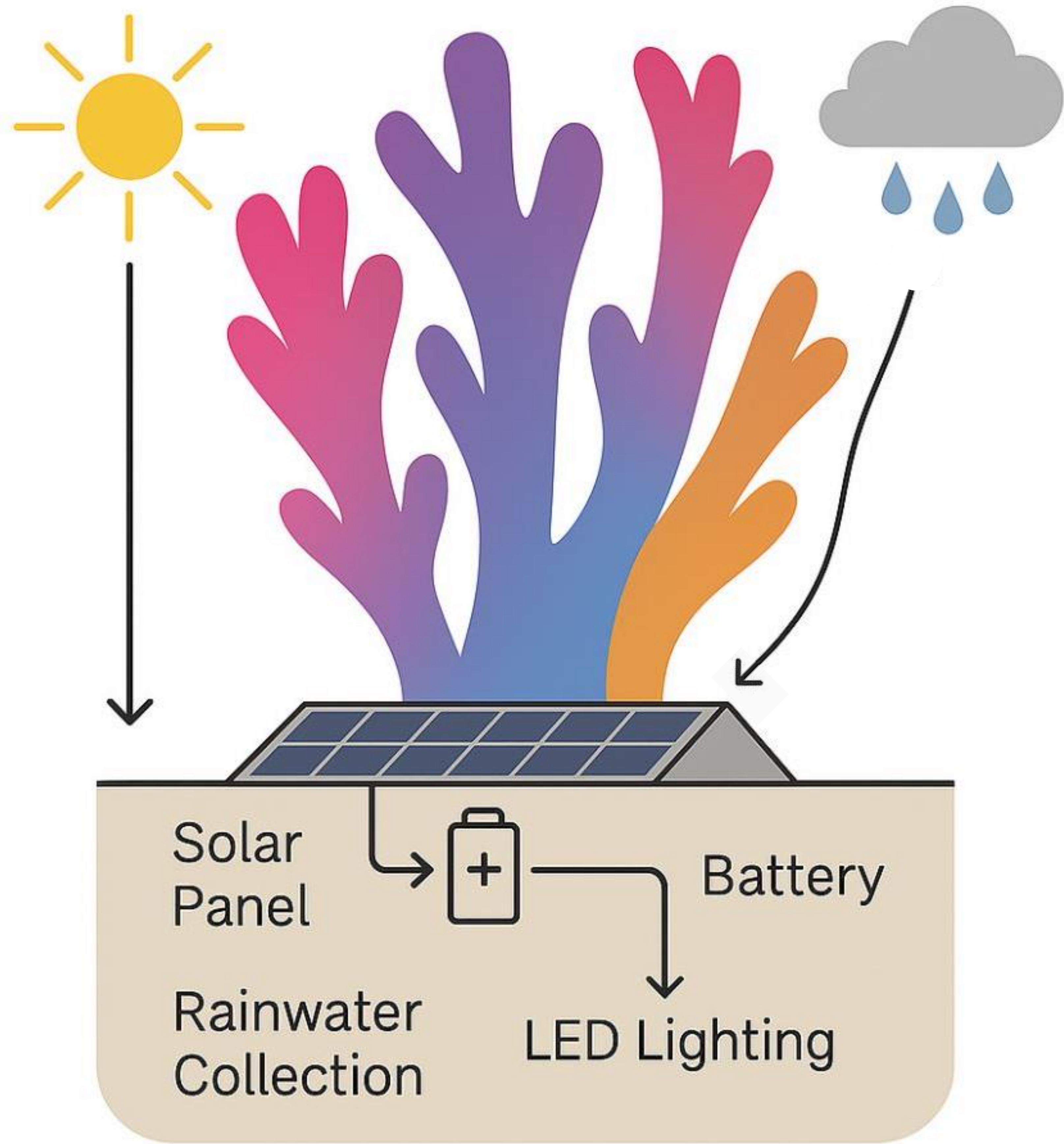
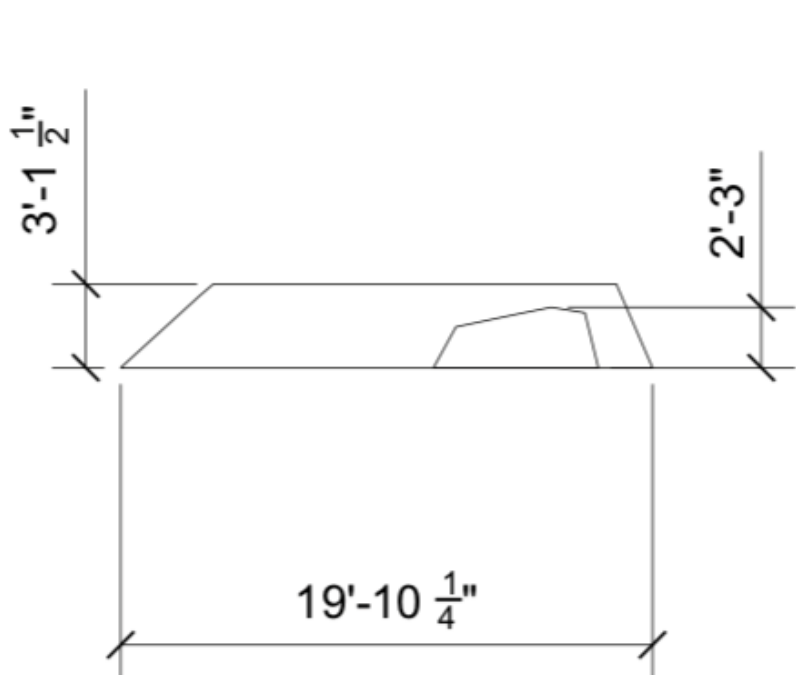


Rock (Foundation)

Top View



Front View



SOLAR PANELS ON BASE PLATFORM

TECHNICAL NARRATIVE

DWELL is a coral inspired public sculpture that integrates solar energy, rainwater collection, and low impact lighting. Three colorful coral-shaped modules rise from a shared base, constructed with mild steel framing and cast aluminum for durability in Fiji's tropical climate.

Solar panels are positioned on the flat top and angled sides of the base, maximizing sunlight exposure while maintaining the sculptural integrity. Power is stored in internal batteries housed within the base and used to illuminate the sculpture at night through embedded LED lighting that mimics the flow of ocean currents.

Rainwater is guided down the coral surfaces into edge gutters and stored in a hidden cistern for future use. All systems are self-contained, weather-resistant, and require minimal maintenance. DWELL functions as both landmark and living infrastructure, promoting sustainability, resilience, and beauty.