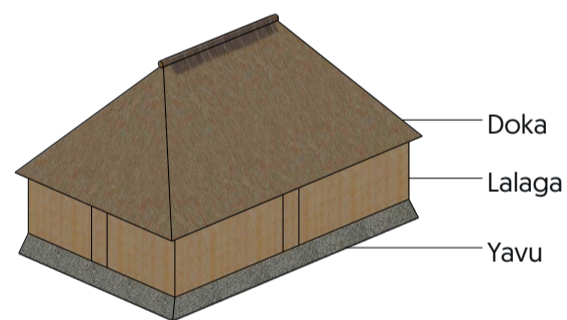


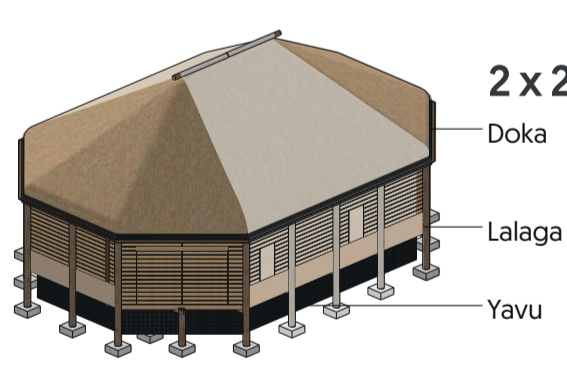


ARCHITECTURE INSPIRED BY BURE

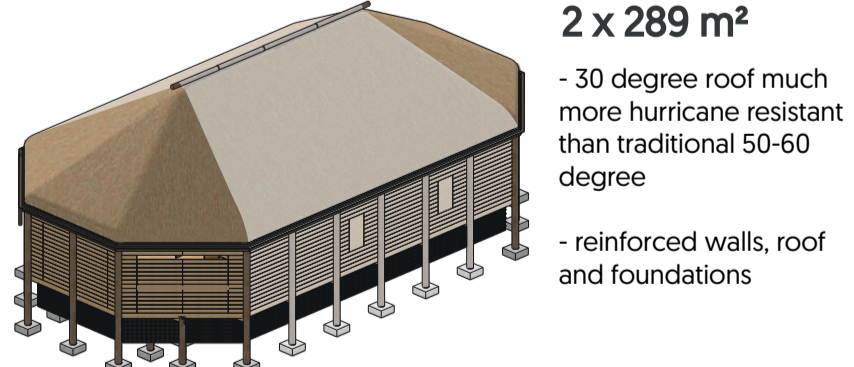
BURE -traditional architecture



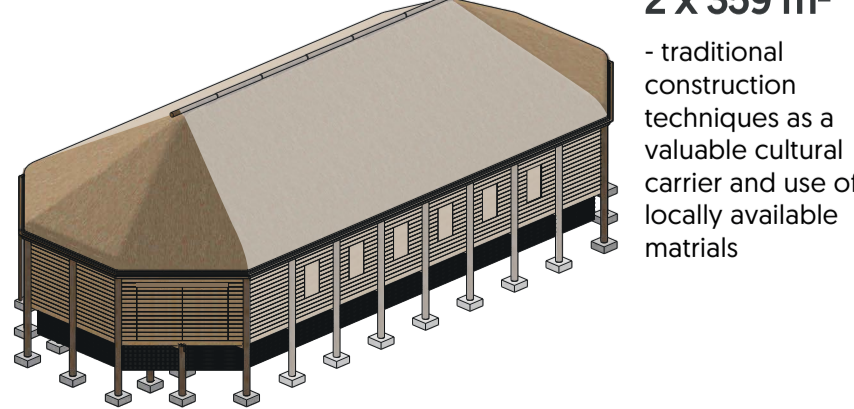
SMALL - all built from the same elements only their number is different



MEDIUM



BIG



CONSTRUCTION BASED ON LOCAL TECHNIQUES

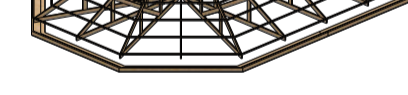
THATCHED ROOF
bamboo gutter



FULL FORMWORK
full roof covering for greater wind resistance



REPEATABLE TRUSS
all truss are the same size for ease of production and repairs



STRUT WALLS
reinforced with braces and structural beams



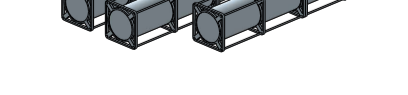
JOISTS



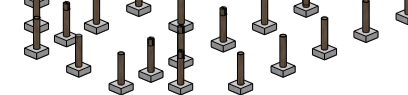
GABIONS
as the stone wall of Yavu, which prevents the structure from being blown up from below



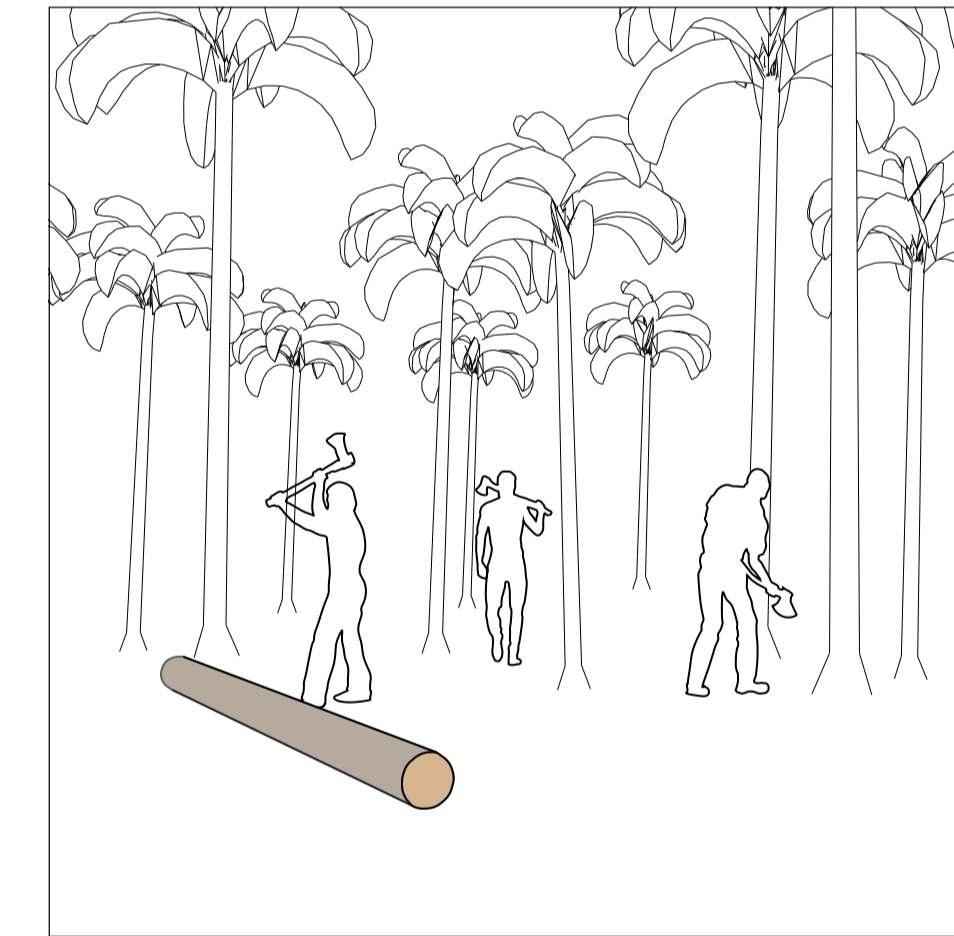
RAINWATER TANKS
maximizing the space under the building to collect rainwater



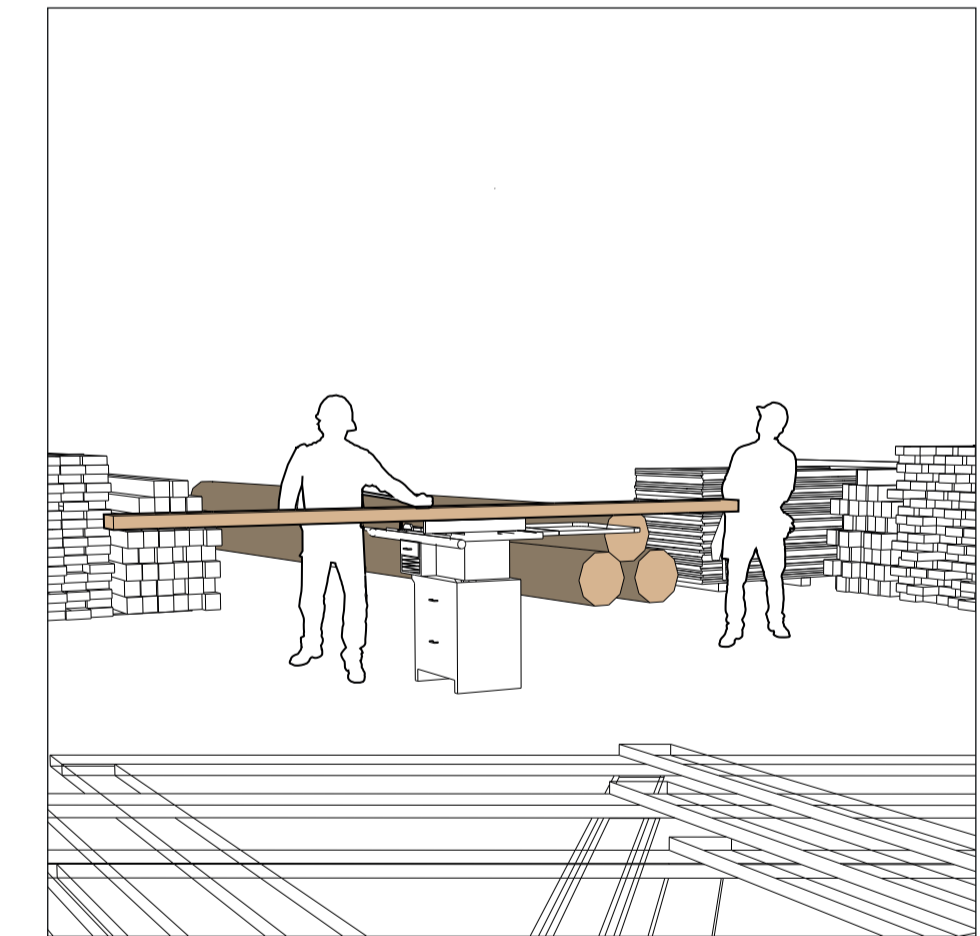
FOUNDATIONS
strengthening the traditional method



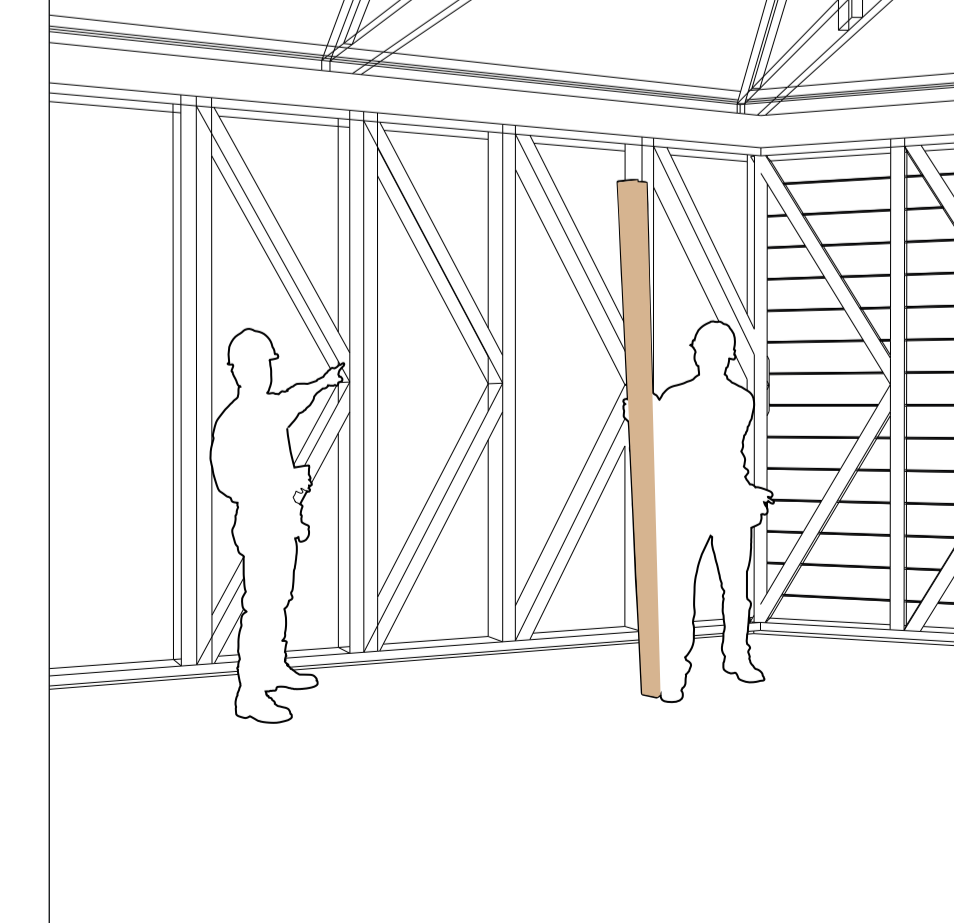
Local community participation in construction



Processing of early harvested wood



Assembling of repetitive elements



Application of traditional building - magimagi bonding

