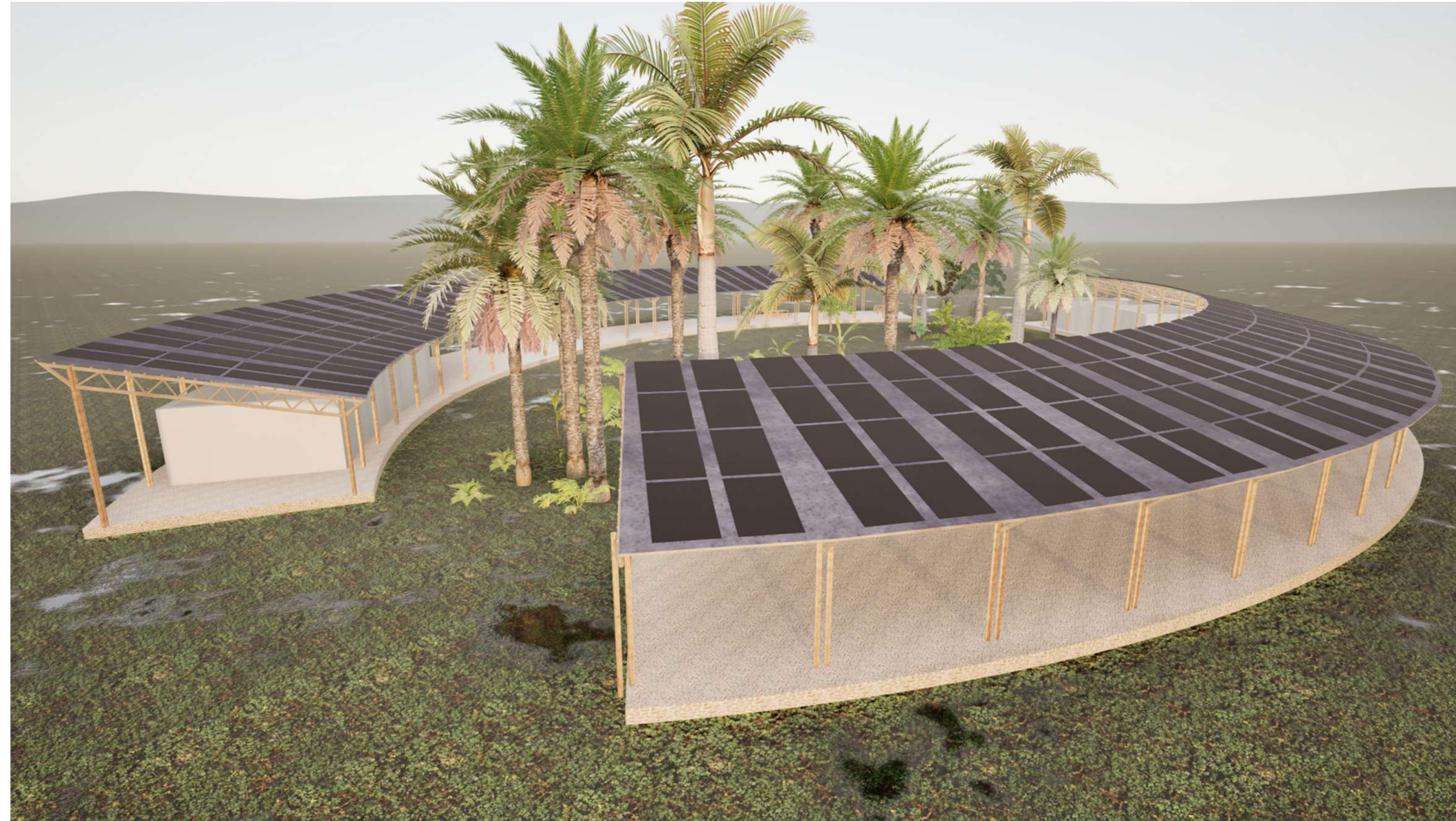


# LAGI 2025

## The Eye of FIJI



The whole system is designed to be modular, so it can be built in different shapes and forms, depending on how many modules are used. The construction of the modules is easy and fast, so the local community can help with the building process.

The design will be operated using simple, low-maintenance systems like solar panels and rainwater harvesting. Local community members will be trained to handle regular tasks such as cleaning panels, checking filters, and managing basic repairs. Because the structure is modular and easy to assemble, the community can also assist in construction and future adjustments. This involvement ensures long-term sustainability through local knowledge and participation.

