

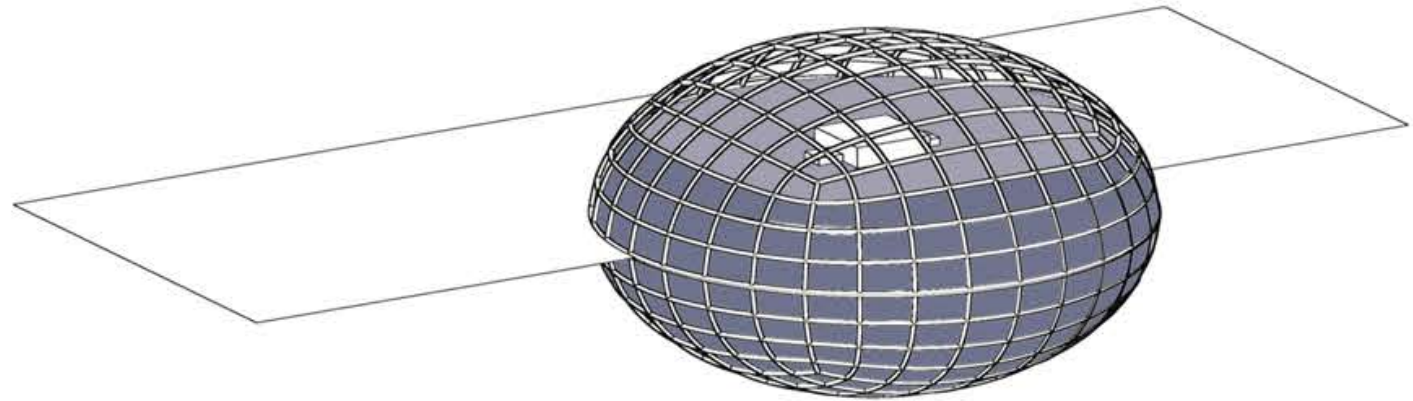


# SOLAURA

**MODULAR SOLAR ENERGY + WIND ENERGY HARNESSING PAVILLION IN FIJI**  
WIND MILLS ARE A STUNNING VIEW, AND SO IS ANY ELEMENT THAT ROTATES IN THE WIND. WITH THEM BEING SO HIGH UP IN THE SKY, WHY NOT INCORPORATE SOLAR ENERGY HARNESSING IN IT. THIS SIMPLE THOUGHT GAVE BIRTH TO SOLAURA. WITH IT'S AERODYNAMIC STRUCTURE AND CONSCIOUS PLACEMENT. THIS DESIGN AIMS TO INCORPORATE THE PRINCIPLES OF MODULARITY, RENEWABLE ENERGY GENERATOR, AND SUSTAINABLE PRACTICE WHILE KEEPING IN MIND THE HUMAN EXPERIENTIAL FACTOR IN MIND. GIVING A CALM AND PEACEFUL VIEW OF SKY, WITH MULTIPLE KITE-LIKE MODULES, SEEMINGLY FLOATING, AND ROTATING HELPS HUMANS ENGAGE MORE WITH IT. THE DESIGN ALSO KEEPS IN MIND THE NEEDS AND HARDSHIPS OF MAROU VILLAGE. IT HELPS BY PROVIDING REFUGE AREA, WATER FILTRATION, AND RETENTION ELEMENTS, FARMING ZONES, WHILE ALSO INCREASING THE QUALITY OF LIFE OF PEOPLE BY PROVIDING COMMUNITY ZONES LIKE GATHERING SPACES, DEDICATED PUBLIC SEATING AND INTERACTIVE LIGHT SHADOW PLAY. THIS DESIGN ADDS A NEW CHARACTER AND VALUE TO THE MAROU VILAGE, WHILE RESPECTING THE EXISTING CULTURE.

## WATER DOMES

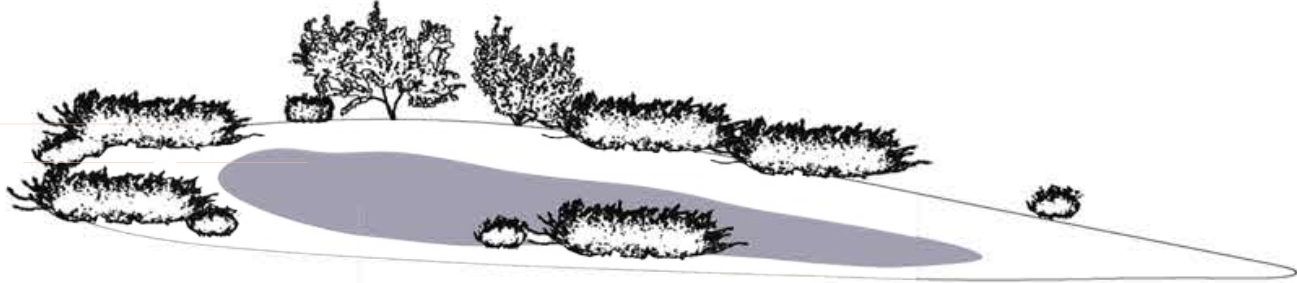
TWO ELLIPTICAL WATER FILTRATION DOMES, EACH WITH A 15-METER RADIUS, ARE POSITIONED IN A VISUAL HIERARCHY YET REMAIN DISTANT FROM DIRECT HUMAN INTERFERENCE. UTILIZING PRE-FILTRATION SYSTEMS EQUIPPED WITH THREE LENSES AND A SINGLE REFLECTOR, EACH DOME HAS THE POTENTIAL TO FILTER UP TO 10,000 LITERS OF WATER DAILY. TOGETHER, THE PAIR MEETS THE CURRENT WATER DEMAND. STRATEGICALLY LOCATED HIGHER UP THE HILL TO MAXIMIZE SOLAR EXPOSURE, THE DOMES ARE DIRECTLY CONNECTED TO EXISTING FLOOD CHANNELS, ALLOWING THEM TO CAPTURE AND PURIFY WATER EFFICIENTLY



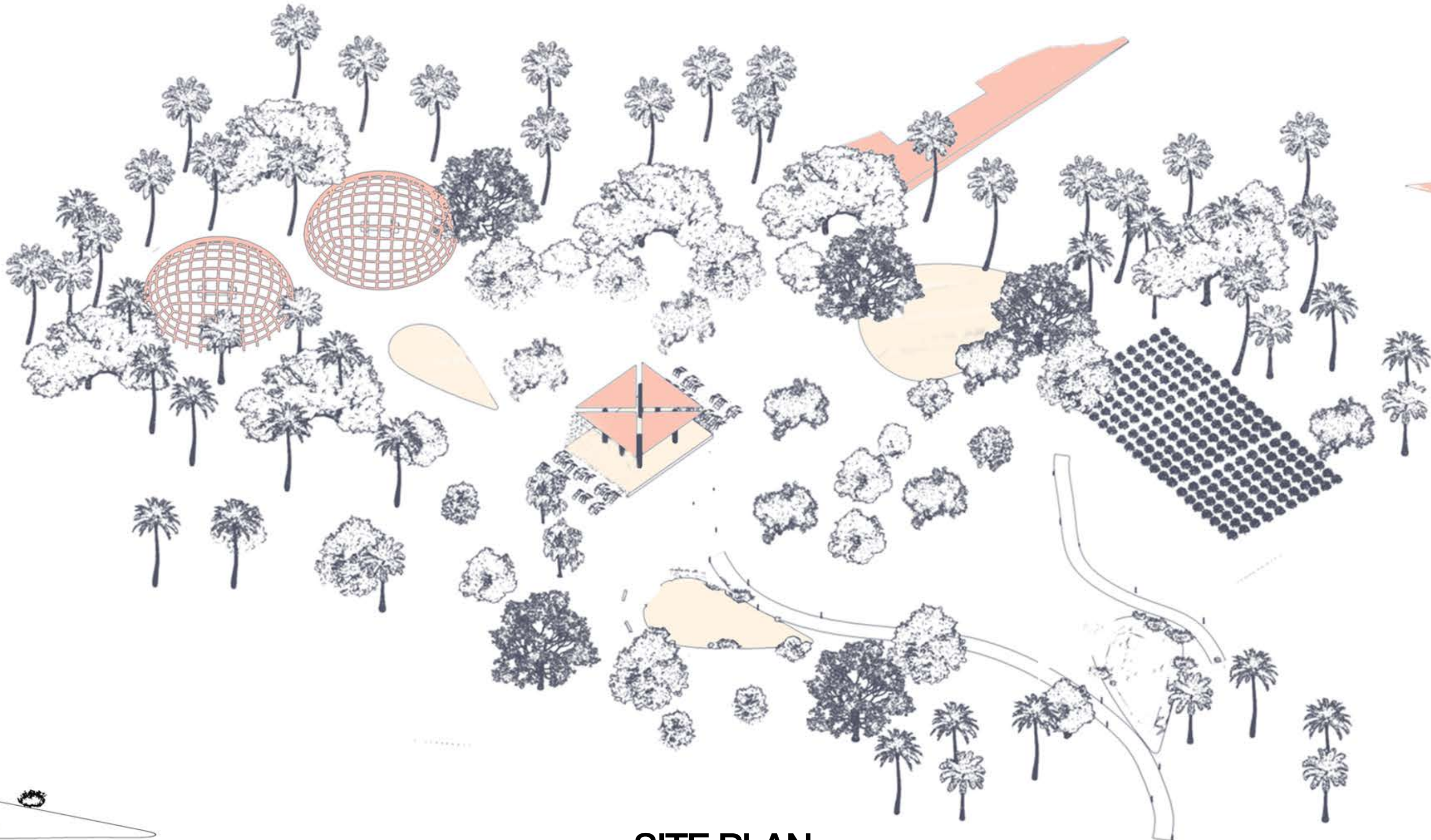
## RAIN GARDEN

TEAR-DROP-SHAPED 120 SQM ROCK LINED RAIN GARDEN, PROVIDING A PERMEABLE LAYER FOR WATER TO SEEP IN AND RECHARGE WATER TABLE, WHILE HELPING MANAGE BOTH FLOODS AND DROUGHTS. PRESENT IN GENTLY SLOPED AREAS OF THE SITE WITH DEPTH OF 45CM WITH DRY-TOLERANT PLANTS ON TOP, MOVING TO WATER TOLERANT AT THE BOTTOM, THESE ARE PERFECT HUMAN-NATURE INTERACTION ZONES.

**15-30CM**  
DALO, SHELL GINGER, FIJI WILL  
HELICONIA, BEACH NANPAKA



**30-45CM**  
FIJI SEDGE, FIRE FLAG, BEACH MORNING GLORY,  
NATIVE SWAMP GRASS

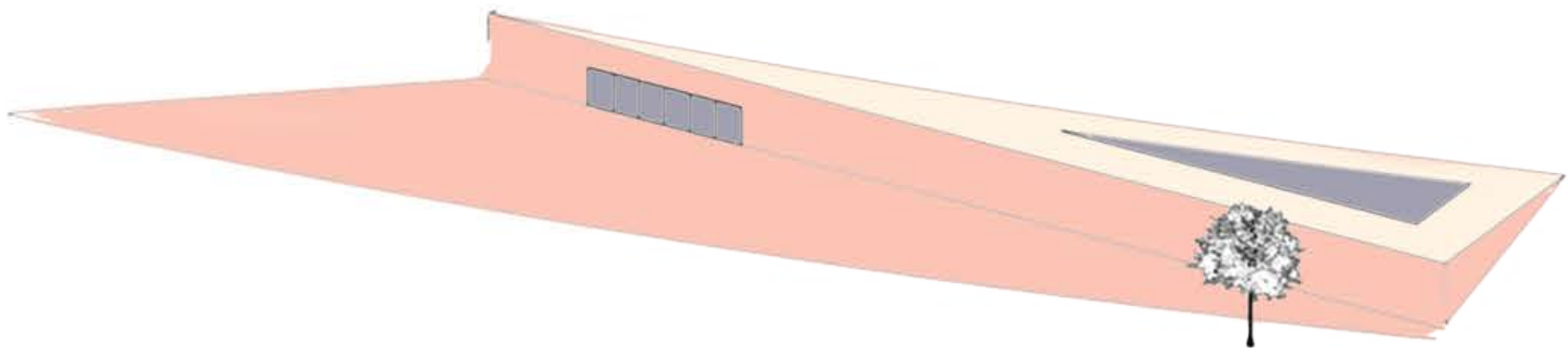


## SITE PLAN

SCALE 1:200

## EARTH-BERMED HOUSES

TUCKED SEAMLESSLY INSIDE THE ORGANIC TOPOGRAPHY, THEY OFFER REFUGE FROM FLOODING. MADE FROM RAMMED EARTH AND STABILISED ADOBE, WITH A SKYLIGHT PEEKING THROUGH. IT PROVIDES A HUMBLE ABODE FOR PEOPLE IN DIRE NEED. IT IS PLACED HIGHER UP FROM THE VILLAGE, WITH FRAMING AND RAIN GARDENS NEARBY.



## FARMING

STRAIGHT CONEVTIONAL FARMING METHODS RETAINED WITH A STORAGE WAREHOUSE NEARBY, COULD ALSO BE DEVELOPED TO A AQUACULTURE SPOT. WITH TARO, CASSAVA, YAMS, BANANA, PAPAYA, COCONUT, EGGPLANT, TOMATO, CABBAGE ETC. THIS AREA COULD GROW INTO A HOLISTIC FARMING ZONE.

