

1. ELEMENT - AIR (CAGI)

Whispering Chimes - Welcome & Storytelling Pavilion

Winds are vital for island life, used for navigation, fishing, and weather. Once read by chiefs and priests as signs from ancestors or gods.

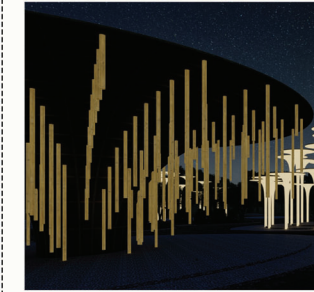


Co-Benefits
Multi-sensory arrival experience space for the visitors
Environmental: Enhances microclimate and biodiversity with fragrant native plants
Social: Strengthens cultural pride and guest-host relationships
Educational: Introduces Fijian worldview through architecture and ritual



Shared Land Uses
Supports rituals and guided learning

Adapts to seasonal or spontaneous community gatherings



Technology
Solar-powered lighting supports night ceremonies and safety

AR and sensor tech for the visitors to know the layers of myth and environmental data of the region

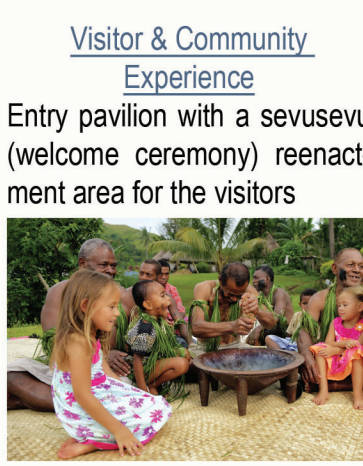
A ceremonial arrival zone, inspired by wind's movement and song, features a bamboo pavilion with swaying chimes that echo ancestral whispers, inviting reflection and connection to unseen guiding forces.



Culture
Inspired by the traditional Fijian bure as a communal gathering space



Material
Vertical bamboo chimes, Bamboo spined thatch canopy, and locally sourced natural stone flooring



Visitor & Community Experience
Entry pavilion with a sevusevu (welcome ceremony) reenactment area for the visitors



Ceremonial Arrival Zone

8. CULINARY & CULTURAL TASTING SPACE

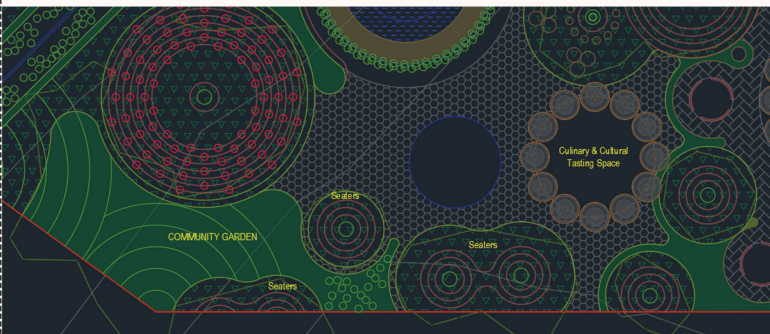
THE MYCELIAL TABLE
Where Culture Gathers, Grows, and Feeds the Future

The Mycelial Table is a regenerative cultural pavilion and edible landscape that brings together culinary heritage and sustainable land use. Surrounding community garden cultivates native crops and medicinal plants. Inspired by the interconnectedness of mycelial networks, the design fosters symbiosis between people, place, and ecology.



Culinary zone + adjacent community garden.

Outdoor classroom for agroecology and climate resilience. Grows native crops and healing plants for tasting events. Engages all ages in hands-on activities.



Opportunities for locals & Festivals
Lautoka Sugar Festival - Variety of local food stalls.
Hibiscus Festival - Suva featuring food stalls, traditional music, float parades, and more.
Bula Festival - A vibrant cultural event in Nadi showcasing local food, live music, and traditional crafts.

The Coral Coast Festival in September - Features food and cultural activities.
Traditional Fijian Cuisine - tasting events for visitors' experience:
Fijian food includes yams, taro, sweet potato, cassava, as well as pork, chicken, fish, and lamb. Kokoda, a raw fish salad etc.



Design symbolizing sustenance, symbiosis, and resilience.

Place to celebrates traditional food
Offers space for culinary demonstrations.



7. WORKSHOP & EXHIBITION PAVILION

Reinterprets indigenous gathering structures in a contemporary form, Provides a space for cultural expression through workshops, educational activities, and Craft making activities etc.

Opportunities
Enhances local employment and craftsmanship

Open-air platform with stepped terrain and activity zones

Offers spaces for rest, workshop, learning, and gathering
Encourages interaction between visitors, educators, and artisans
Emphasizes inclusivity, comfort, and contemplative connection to nature



Core Activities
Hands on workshop - Local Crafts
Art & Cultural Exhibitions - By Local Artisans
Educational Programs - School visits, climate literacy, energy and water systems demos
Market & Exchange - Flea & Artisan Markets of Handmade items
Pop-up Installations



Culture & Heritage
Inspired by ceremonial fires, Fijian fire dance traditions, and ancestral reverence space

Co-Benefits
Sculptural shading

Social: Seasonal community rituals such as harvest blessings or remembrance nights can also be held here, offering a powerful and emotionally resonant experience for visitors.

Material
At night, the modules softly glow with hues of orange, amber, and red, with the help of embedded colored LED lights that evoke the image of floating fire.

Shared Activities
Performance arena for Fijian fire dances during night

A place of exploration, speaking with ancestors & meditation during day time.



2. ELEMENT - FIRE (KAMA)

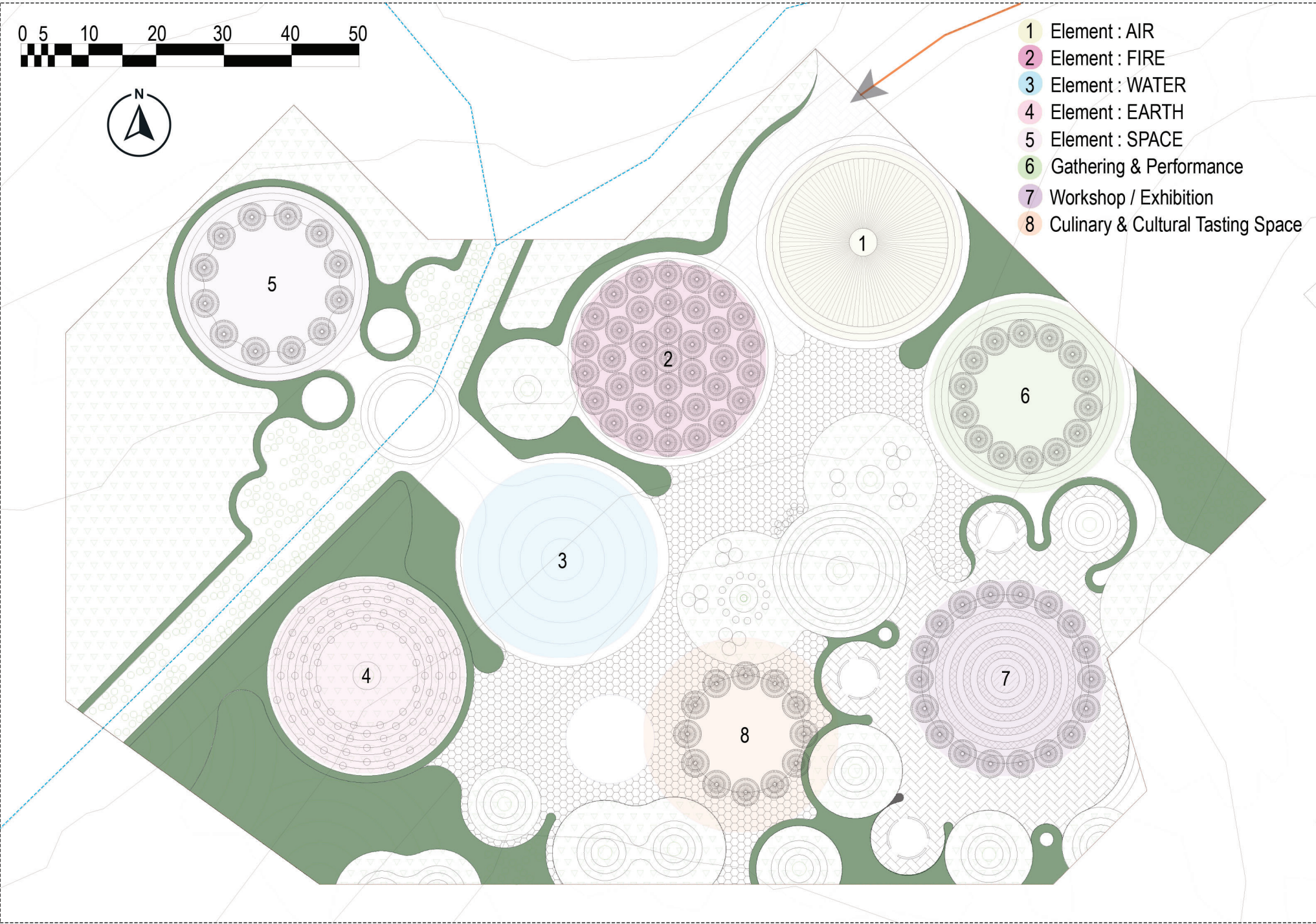
The Ancestral Piers - A living tribute to lineage, wisdom, and continuity.

This design represents a gathering of ancestral piers reimagined through the element of fire. Each column stands as a symbolic 'pier' rising from the earth, honouring the foundations laid by those who came before us.



Visitor & Community Experience
Night time Fire Ritual

Local communities can organize "Light the Flame" nights, where residents and visitors come together to ignite lanterns or candles, fostering unity, reflection, and celebration under the island sky.



6. GATHERING & PERFORMANCE : CANOPIES OF CULTURE

Canopies of Culture is a sculptural performance space inspired by Fijian dance and natural forms. Rising from the land, its modules provide shade, gathering areas, and a stage for cultural expression. The varying heights of the modules represent the diverse dance forms of Fijian culture.

Culture & Heritage

Inspired by traditional Fijian dance, communal gathering, and the fluidity of Pacific movement



Community Experience
Seasonal festivals, pop-up markets, and cultural exhibitions by locals
During non-event times, Locals can enjoy picnics or Congregate for conversation

Acts as Multipurpose platform and sculptural landscape
Functions as a stage, classroom, meditation area, and festival ground.
Flexible for cultural, educational, and ecological programming.
Open design ensures inclusive access and universal use

Integrated solar lighting and natural acoustic enhancements
Enables night time performances sustainably
Enhances sound naturally without heavy infrastructure

3. ELEMENT - WATER (WAI)

Water as a Sacred Element - Cultural Connection

In traditional Fijian cosmology, water (wai) is not a resource, it is a living spirit. It is linked to Ancestral presence.

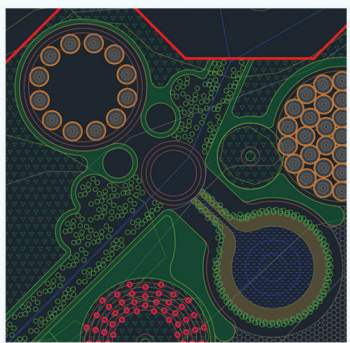
Culture

Revives ancestral understanding of watershed guardianship space

Environmental Impact

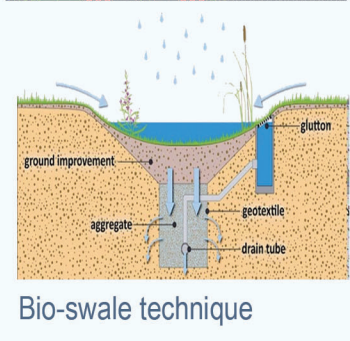
It acts as a climate buffer, capturing stormwater during heavy rain and sustaining the ecosystem during dry seasons.

Supports wetland biodiversity and introduces passive cooling to the surrounding microclimate.



Functionality

This central water feature serves as both a rainwater harvesting reservoir and a cultural landscape. A portion of the on-site water stream during the heavy monsoon can be diverted through surface runoff channels into the reservoir, guided by natural contours without motors. Once full, excess water overflows back into the original stream via a controlled bioswale, preventing flooding.



Bio-swale technique

Visitor & Community Experience and Technology

QR storytelling sharing stories of Dakuwaka's legend, connecting visitors to Fijian beliefs and enhancing their experience.
Seasonal water ceremonies can be organized involving local community leaders or artists, where visitors can witness & experience.



Dakuwaka
Shark Deity
Fijian Mythology



Culture & Heritage
Inspired by Pacific totems and Fijian ancestral connections.



Materials
Use of local, natural, and regenerative material such as treated bamboo to make the Totems which supports bio diversity & Local Economy & Artisans

Optional : Reclaimed Wood / Rammed earth

4. ELEMENT - EARTH (Vanua)

Totems of the Earth: Rooted in Culture, Rising for the Future.

"Vanua" in Fijian means not just land, but the people, traditions, and responsibilities tied to it.

A symbolic landscape where totems rise from the land, reflecting our connection to Earth, culture, and community. The puzzled layout speaks to the fragmentation of modern relationships with nature, while inviting a path to healing and reconnection.

Flexible space for learning, celebration, ritual, and rest
Acts as a cultural park, outdoor classroom, and exhibition space
Welcomes diverse user groups and multiple modes of engagement
Supports seasonal or rotating events with community ownership

Visitor & Community Experience

Interactive walk-through garden space with cultural and natural elements

Multi-functional landscape

Environmental: Provides habitat for flora, and Bio mimicking the trees

Social: Builds community pride and identity

Light and digital integration & Technology

Solar-powered lighting during night AR overlays for interactive storytelling and data sharing soil sensors to reveal the Earth's health to create the environmental awareness among the visitors.



Culture & Heritage

Inspired by Fijian celestial navigation, stargazing traditions, and Pacific sky lore

Shared Land Activities

Night park, open-air observatory, and cultural light garden

Accommodates festivals , Moon walks & Story telling
Fosters night-time tourism in harmony with nature

Visitor & Community Experience

Local communities can host sky lantern festivals, inviting visitors to experience and participate in their traditions and way of life.

Moon viewing gatherings, led by the local people & Story telling.



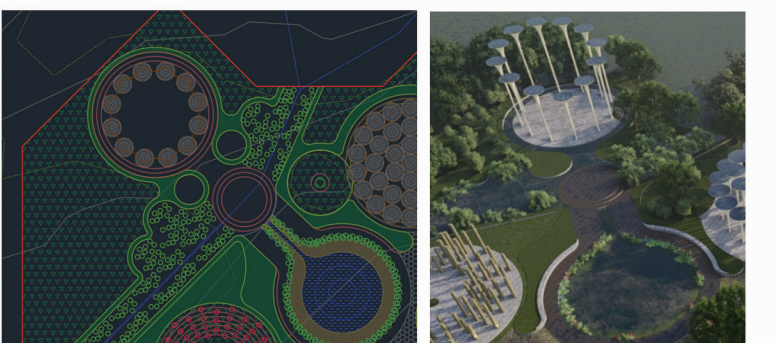
5. ELEMENT - SPACE (LAGI)

Celestial Chorus Garden - Voices of the Sky

The lagi (sky/heaven) is the domain of gods and ancestors. A poetic sky-bound landscape where light-filled structures reach upward, echoing the harmony between humanity and the cosmos. Twelve modules are arranged like a constellation, gently shining light into the sky. Each one represents a month of the year, reflecting the cycle of time in the cosmos.

Features

Star-blinking LED lights is integrated into the modules & it reflects on the water body to enhance the vibrant nightlife experience of Fiji
Solar-powered lighting, sound of the space & AR star maps for the best experience for the visitors



Design Interpretation

The space element & the Rainwater Reservoir has been deliberately kept on the same axis which symbolises the sky and waterbody are deeply connected through the cycle of rain.

The sky, holding the clouds, becomes the source of rain that falls onto the waterbody. This rain nourishes the water, causing it to flow, change, and reflect the sky above.